

manuals.plus /

- › [Lefton](#) /
- › [Lefton Rotatable Bathroom Faucet BF2204-3 Instruction Manual](#)

## Lefton BF2204-3

# Lefton Rotatable Bathroom Faucet BF2204-3 Instruction Manual

Model: BF2204-3

## 1. PRODUCT OVERVIEW

The Lefton Rotatable Bathroom Faucet BF2204-3 is designed for modern bathrooms, featuring a rotatable spout, a real-time temperature display, and multiple water outlet modes. Constructed from solid brass, it offers durability and ease of use for daily tasks.



Image 1.1: Lefton Rotatable Bathroom Faucet, Matte Black finish.

### Key Features:

- **Rotatable Spout:** Offers flexible adjustable angles for various tasks like face washing and teeth brushing.
- **Temperature Display:** A battery-free digital display shows real-time water temperature in Fahrenheit.
- **Three Water Outlet Modes:** Easily switch between aerated stream, spray, and boost settings.
- **Durable Construction:** Made from solid brass with a ceramic disc valve for long-lasting performance.
- **Easy Maintenance:** Sprayface resists mineral buildup for simple cleaning.

## 2. SAFETY INFORMATION

---

Please read all instructions carefully before installation and use. Failure to follow these instructions may result in property damage or personal injury.

- Ensure water supply is turned off before beginning any installation or maintenance.
- Wear appropriate personal protective equipment, such as safety glasses, during installation.
- Verify that the faucet dimensions are compatible with your countertop or vanity before purchase and installation.
- Do not overtighten connections, as this may damage the faucet or plumbing.
- If you are unsure about any part of the installation process, consult a qualified plumber.

## 3. PACKAGE CONTENTS

---

Verify that all components are present before beginning installation:



Image 3.1: Included components for the Lefton BF2204-3 faucet.

- A. Hot Water Pipes
- B. Rubber Gasket
- C. Metal Gasket
- D. Mounting Nut
- E. Cold Water Pipes
- F. Threaded Metal Pipe
- G. Waterproof Rubber Ring
- H. Faucet Body

*Note: An adapter (9/16") is included for supply hose connection.*

## 4. INSTALLATION INSTRUCTIONS

---

This faucet is designed for single-hole deck plate installation. Follow these steps for a secure setup:

### Pre-Installation Checks:

- Confirm your mounting hole size is between 1.38" (35mm) and 1.5" (38mm).
- Ensure your deck thickness is a maximum of 1.9" (48mm).

- Turn off the main water supply.



Image 4.1: Mounting hole and deck thickness specifications.

## Installation Steps:

1. **Prepare the Faucet Body:** Insert the Waterproof Rubber Ring (G) onto the bottom of the Faucet Body (H).
2. **Insert Threaded Pipe:** Screw the Threaded Metal Pipe (F) into the base of the Faucet Body (H).
3. **Position Faucet:** Place the Faucet Body (H) through the mounting hole on your countertop or vanity.
4. **Secure from Below:** From underneath the sink, slide the Rubber Gasket (B), then the Metal Gasket (C), onto the Threaded Metal Pipe (F).
5. **Tighten Mounting Nut:** Hand-tighten the Mounting Nut (D) onto the Threaded Metal Pipe (F). Use a wrench to gently tighten further until secure, ensuring the faucet is aligned correctly.
6. **Connect Water Lines:** Attach the Hot Water Pipe (A) and Cold Water Pipe (E) to the corresponding inlets on the faucet body. Connect the other ends to your hot and cold water supply lines. Ensure connections are tight to prevent leaks.

7. **Check for Leaks:** Slowly turn on the main water supply and check all connections for leaks.



Image 4.2: Visual guide for easy faucet installation.

## 5. OPERATION GUIDE

---

### Water Flow and Temperature Control:

The faucet features a single rotary switch for adjusting water flow and temperature. Move the handle left for hot water and right for cold water. Lift the handle to increase flow and lower it to decrease flow.

### Temperature Display:

The integrated digital display shows the real-time water temperature in Fahrenheit. This display is powered by water flow and does not require batteries.

# REAL-TIME DIGITAL DISPLAY



Image 5.1: Real-time digital temperature display.

## Rotatable Spout:

The faucet spout offers 1080° rotation with triple-joint flexibility, allowing you to direct water precisely where needed for various tasks.

Image 5.2: Faucet's 360-degree rotation for maximum flexibility.

## Water Outlet Modes:

The rotatable sprayhead features a touch button to switch between three distinct water modes:

- **Stream:** A steady, aerated flow for everyday tasks.
- **Spray:** A wider, softer spray for rinsing.
- **Boost:** A powerful stream for efficient cleaning.

## THREE WATER MODES



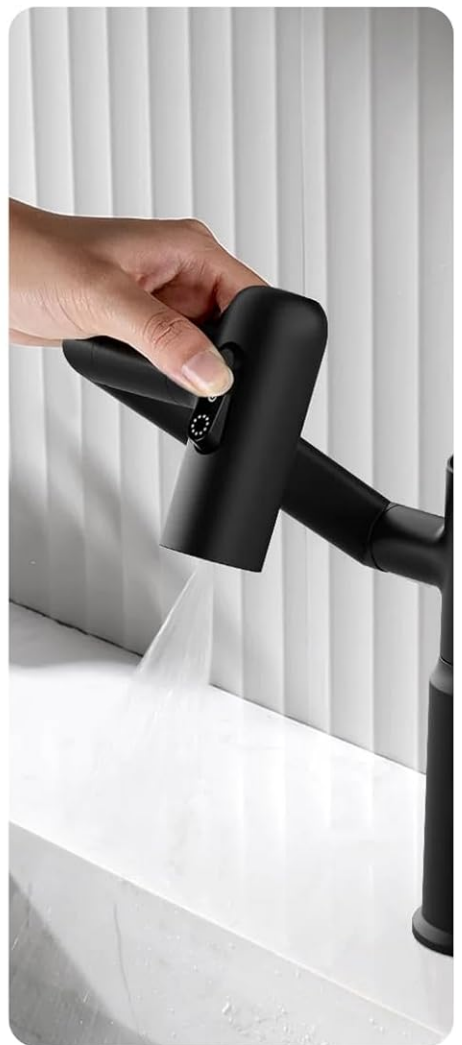
### STREAM

For everyday tasks



### SPRAY

For a soothing water flow experience



### BOOST

For efficient cleaning

Image 5.3: Three distinct water outlet modes: Stream, Spray, and Boost.

## 6. CARE AND MAINTENANCE

Proper care will ensure the longevity and optimal performance of your Lefton faucet.

- **Regular Cleaning:** Clean the faucet regularly with a soft cloth and mild soap. Avoid abrasive cleaners, harsh chemicals, or scouring pads, as these can damage the finish.
- **Mineral Buildup:** The sprayface is designed to resist mineral buildup. If mineral deposits occur, gently wipe them away with a soft cloth dampened with a vinegar solution.
- **Ceramic Disc Valve:** The faucet is equipped with a durable ceramic disc valve designed for long-term, leak-free performance. No special maintenance is required for the valve under normal use.
- **Avoid Damage:** Do not use excessive force when rotating the spout or operating the handle.

## 7. TROUBLESHOOTING

If you encounter issues with your faucet, refer to the following common problems and solutions:

Problem	Possible Cause	Solution
Low Water Flow	Clogged aerator Partially closed shut-off valves Debris in water lines	Unscrew and clean the aerator. Ensure hot and cold shut-off valves are fully open. Flush water lines before connecting to faucet.
Leaks from Faucet Base	Loose mounting nut Improperly seated gaskets	Tighten the mounting nut from underneath the sink. Ensure rubber and metal gaskets are correctly positioned.
Leaks from Water Line Connections	Loose connections Damaged O-rings/washers	Tighten water supply line connections. Inspect and replace any damaged O-rings or washers.
Temperature Display Not Working	Insufficient water flow Sensor obstruction	Ensure adequate water pressure and flow. Check for any obstructions in the water path near the sensor.

If the problem persists, please contact Lefton Customer Support.

## 8. SPECIFICATIONS



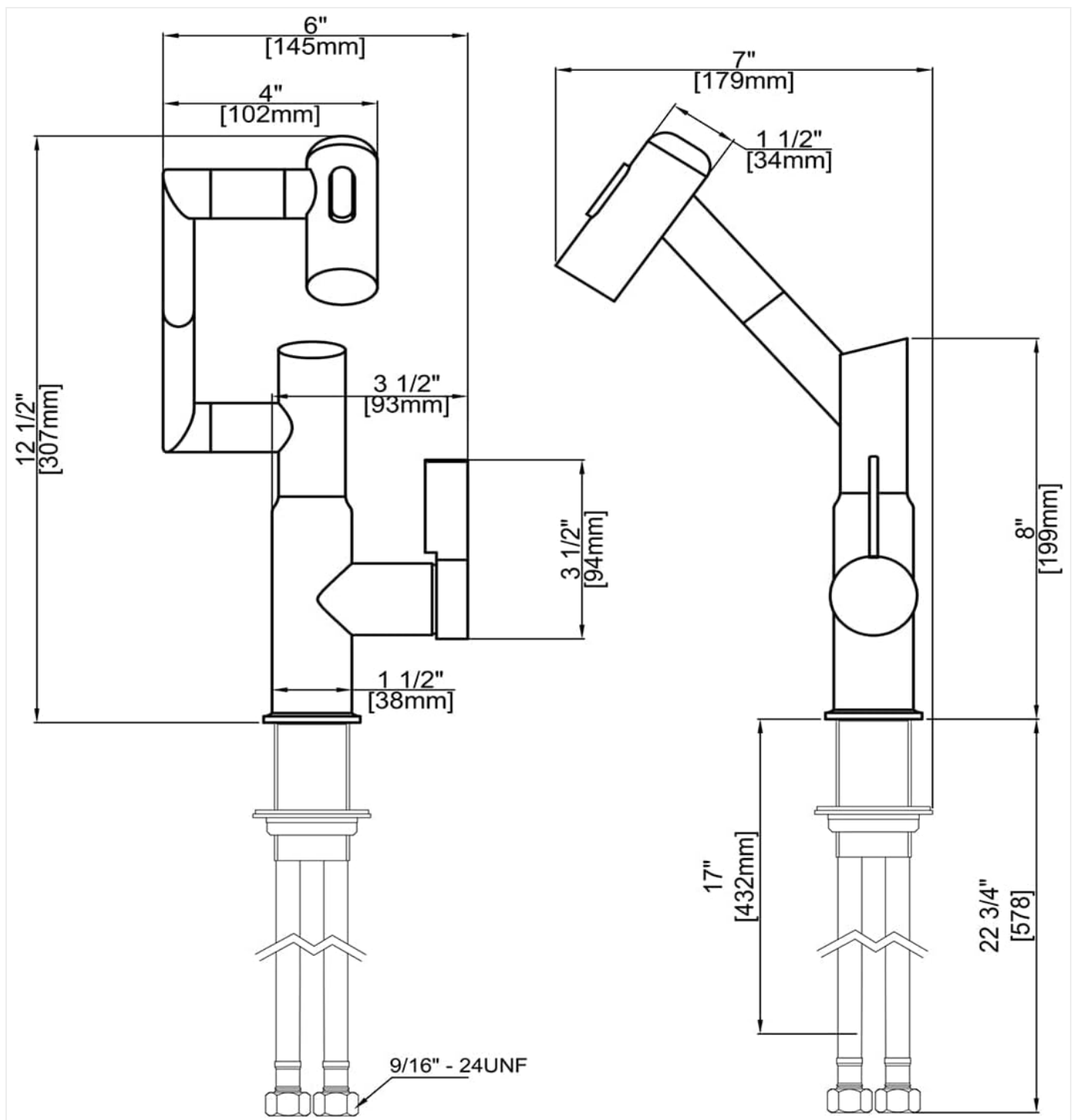


Image 8.1: Detailed dimensions of the Lefton BF2204-3 faucet.

Feature	Detail
Brand	Lefton
Model Name	BF2204-3
Color	Matt Black
Material	Brass
Finish Type	Polished
Mounting Type	Deck Mount
Installation Type	Single Hole

Feature	Detail
Number of Handles	1
Special Features	360 Swivel, Adjustable Hot Limit, Lead Free, Temperature Display
Maximum Flow Rate	1.18 Gallons Per Minute
Product Dimensions	5"D x 2"W x 8"H
Item Weight	4.13 pounds (1.88 Kilograms)
Recommended Uses	Bathroom


## 9. WARRANTY INFORMATION

The Lefton Rotatable Bathroom Faucet BF2204-3 is covered by a **2-year limited warranty** from the date of purchase. This warranty covers manufacturing defects and material flaws under normal use and service. Please retain your proof of purchase for warranty claims. For full warranty terms and conditions, or to make a claim, please contact Lefton Customer Support.

## 10. CUSTOMER SUPPORT

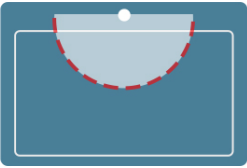
For any questions, assistance, or technical support regarding your Lefton faucet, please contact us:

IDEAL SIZE




COUNTER-TOP

Rotation range:  $\Phi 15.4^{\circ}$



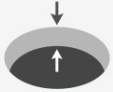
Suggested Hole Size:  
1.4"~1.6"

MOUNTING HOLE SIZE



Min: 1.38"(35mm)  
Max: 1.5"(38mm)

DECK THICKNESS



Max: 1.75"(45mm)

Image 10.1: Lefton Customer Support is available to assist you.

**Email:** [customer@leftonhome.com](mailto:customer@leftonhome.com) (24/7 Service)  
**Phone:** 1 (601) 564 0548 (English Only, Monday - Friday: 9:00 AM - 6:00 PM PST)

We are committed to providing quick responses and 100% satisfaction.



Related Documents - BF2204-3

<div><div>LEFTON</div><div>Installation Manual</div><div>BF2204</div><div></div></div>	<div><div><a href="#">Lefton BF2204 Installation Manual</a></div><div>Installation guide for the Lefton BF2204 faucet, detailing step-by-step assembly and connection procedures.</div></div>
<div><div>LEFTON</div><div>Installation Manual</div><div>BF2204</div><div></div></div>	<div><div><a href="#">Lefton BF2204 Faucet Installation Manual</a></div><div>Installation manual for the Lefton BF2204 faucet, providing step-by-step instructions for assembly and connection.</div></div>
<div><div>LEFTON</div><div>Installation Manual</div><div>BF2204</div><div></div></div>	<div><div><a href="#">Lefton BF2204 Faucet Installation Manual</a></div><div>Comprehensive installation manual for the Lefton BF2204 faucet, detailing each step with clear instructions and diagrams for a smooth setup process.</div></div>
<div><div>LEFTON®</div><div>INSTALLATION MANUAL</div><div>Single Lever Bathroom Basin Faucet</div><div>BF2204</div><div></div></div>	<div><div><a href="#">Lefton BF2204 Single Lever Bathroom Basin Faucet Installation Manual</a></div><div>Official installation manual for the Lefton BF2204 Single Lever Bathroom Basin Faucet. Includes step-by-step instructions, parts list, dimensions, troubleshooting guide, and warranty details.</div></div>
<div><div>Installation Manual</div><div>KS2206</div><div></div></div>	<div><div><a href="#">Lefton KS2206 Installation Manual for Workstation Kitchen Sink</a></div><div>Comprehensive installation guide for the Lefton KS2206 workstation kitchen sink system, detailing faucet, drain, overflow, and accessory connections.</div></div>
<div><div>Installation Manual</div><div>KS2207</div><div></div></div>	<div><div><a href="#">Lefton KS2207 Sink Installation Manual</a></div><div>Installation manual for the Lefton KS2207 sink, detailing the setup of various components including faucets, drain systems, and overflow mechanisms.</div></div>

