

roborock S8 Pro Ultra

Roborock S8 Pro Ultra Robot Vacuum and Mop User Manual

Comprehensive instructions for setting up, operating, maintaining, and troubleshooting your Roborock S8 Pro Ultra Robot Vacuum and Mop.

1. SETUP

1.1 Unboxing and Initial Placement

Carefully remove all components from the packaging. Place the RockDock Ultra charging dock on a hard, flat surface against a wall, ensuring there is adequate clear space around it for the robot to maneuver. Connect the power cable to the dock and plug it into a power outlet.



Image: The Roborock S8 Pro Ultra robot vacuum docked with its RockDock Ultra, ready for setup.

1.2 Charging and First Use

Place the robot vacuum onto the charging dock. Ensure the charging contacts on the robot align with those on the dock. The robot will indicate it is charging. For optimal performance, allow the robot to fully charge before its first cleaning cycle. If the robot reports "charging" incorrectly, clean the charging contacts on both the robot and the dock.

Your browser does not support the video tag.

Video: A demonstration of the Roborock S8 Pro Ultra's dual brush cleaning system, showcasing its effectiveness.

1.3 App Installation and Wi-Fi Connection

Download the Roborock app from your mobile device's app store. Follow the in-app instructions to connect your robot vacuum to your home Wi-Fi network. **Note: The Roborock S8 Pro Ultra only supports 2.4G WiFi networks.** If your router supports both 2.4G and 5G, ensure you connect to the 2.4G network for stable operation.



Image: The Roborock app displaying total control options, including mop drying, mop washing, auto emptying, and custom routines.

2. OPERATING INSTRUCTIONS

2.1 Mapping Your Home

The Roborock S8 Pro Ultra utilizes PreciSense LiDAR navigation to quickly map your home. Initiate a mapping run through the app. The robot will create a detailed 2D and 3D layout of your environment, which you can then customize by naming rooms, setting no-go zones, and defining cleaning schedules.

Precision Mapping

PreciSense LiDAR navigation with quick mapping creates accurate maps in seconds and even offers a 3D layout of your home.

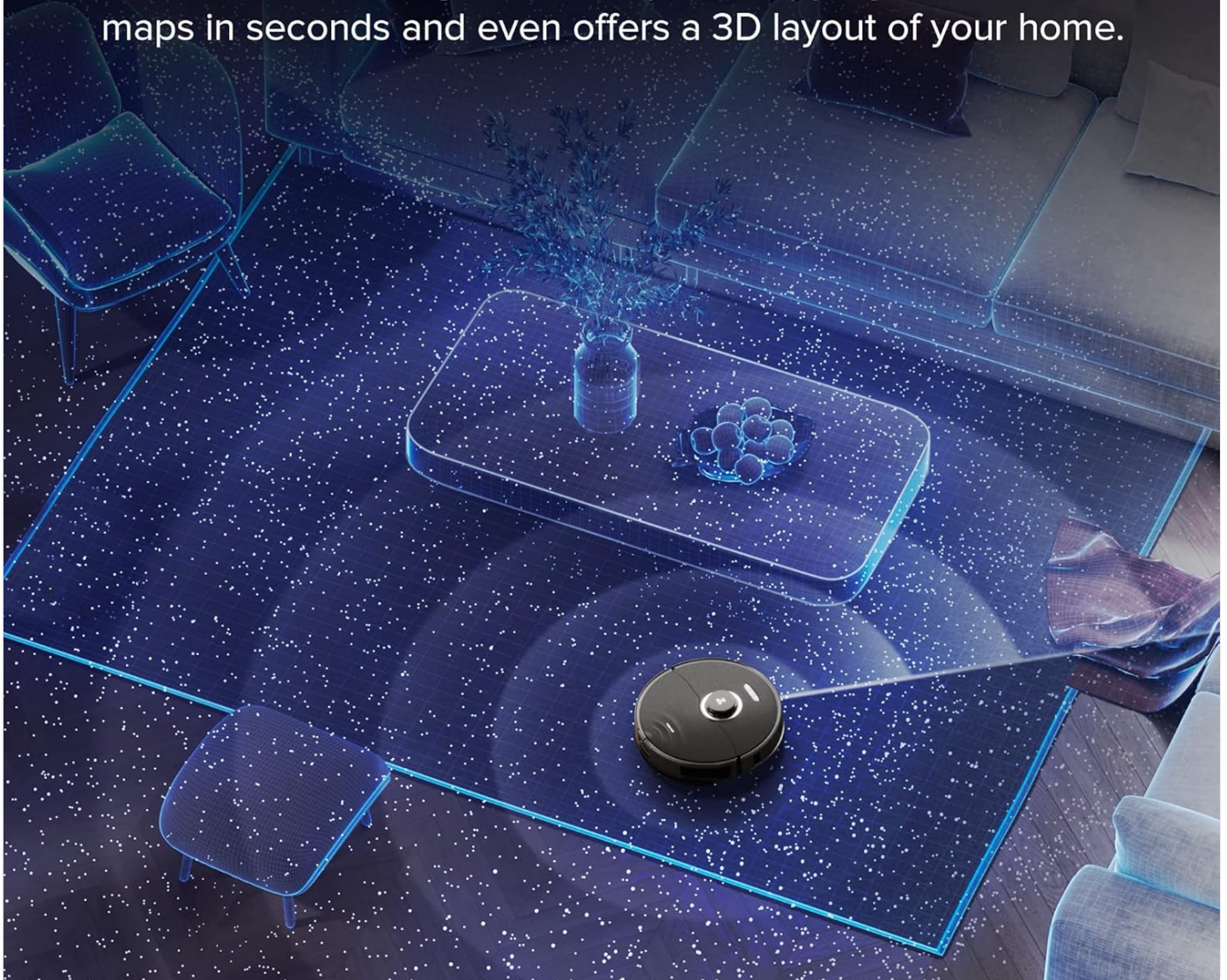


Image: The robot vacuum using LiDAR technology to precisely map the layout of a room.

2.2 Cleaning Modes and Customization

Select from various cleaning modes in the app, including vacuum-only, mop-only, or vacuum and mop simultaneously. Adjust suction power (up to 6000Pa) and water flow based on floor type and dirt level. The robot features a Dual Rubber Brush system for effective debris pickup and an upgraded VibraRise 2.0 Mopping System with 3000 times/min scrubbing for deep cleaning.

Dual Brushes with Powerful Suction

More cleaning power and fewer hair tangles with dual rubber brushes and 6000Pa suction.



DuoRoller Riser



6000 Pa Suction



6000 Pa

Image: The dual brush system of the Roborock S8 Pro Ultra, designed for powerful suction and reduced hair tangles.

Dual Sonic Mopping



2X
Vibration Modules



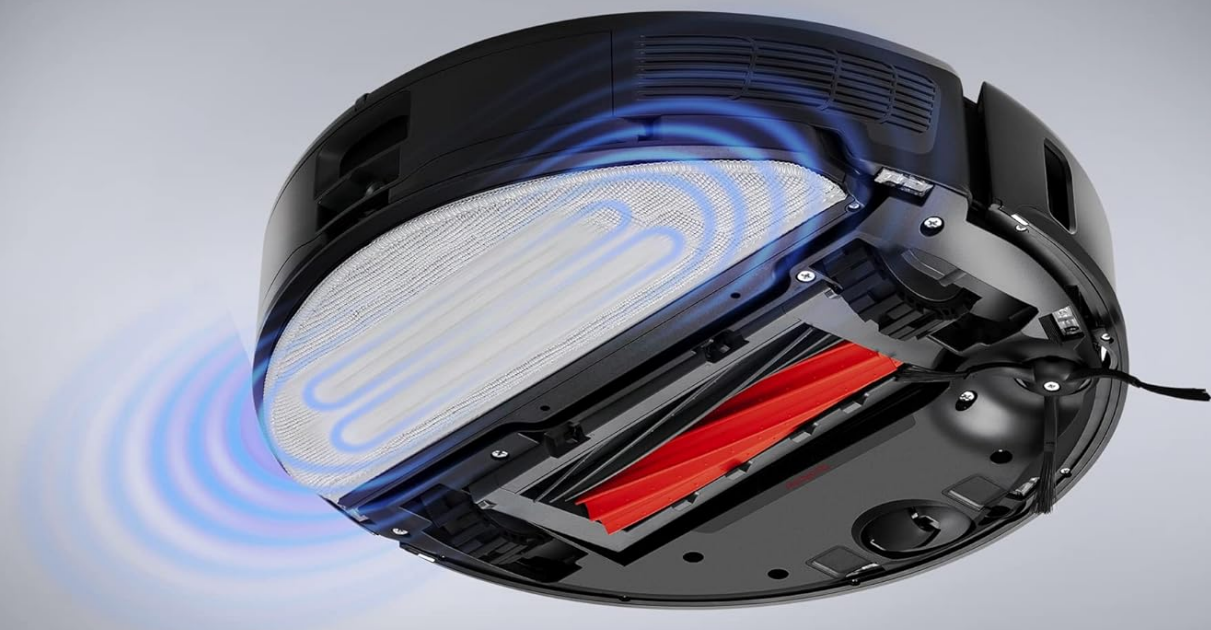
3000 times/min
Scrubbing



>6N
Mop Pressure



5mm*
Mop Lifting



*Based on internal testing carried out by the manufacturer, the mop module can be lifted up to 5mm.

Image: Details of the VibraRise 2.0 mopping system, showing its enhanced vibration and scrubbing capabilities.

2.3 Reactive 3D Obstacle Avoidance

The S8 Pro Ultra is equipped with Reactive 3D Obstacle Avoidance, using structured light and infrared imaging to identify and bypass common household objects like shoes and wires in both bright and dark environments. For optimal safety, ensure "Reactive Obstacle Avoidance" is activated in the Roborock app.

Total App Control

⚠ Robot vacuum only supports 2.4G WIFI.



Mop Drying Mode



Mop Washing Mode



Auto Emptying Mode



Custom Routines

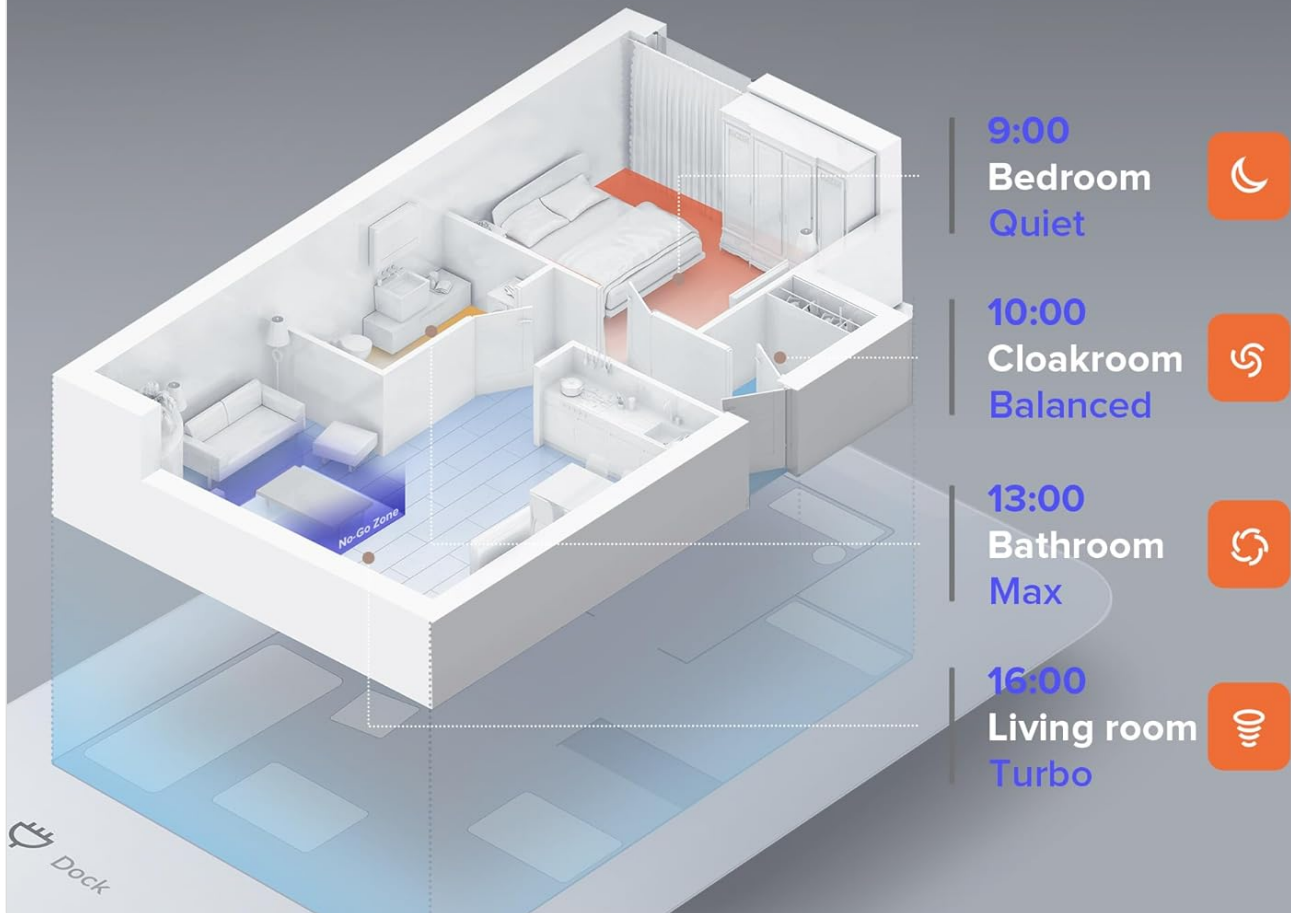


Image: The robot vacuum intelligently avoiding obstacles on the floor, showcasing its Reactive 3D Obstacle Avoidance technology.

2.4 Voice Control

Integrate your Roborock S8 Pro Ultra with smart home assistants such as Amazon Alexa and Google Home. Use simple voice commands to start a clean, change settings, or send the robot back to its dock.

Advanced App Control

Customized Cleaning with 3D Mapping

Set Emptying Modes

Smart Light Balanced Max

Set Washing Modes

Light Balanced Max

Set Drying Modes

2h 3h 4h



***Please note that robot vacuum only supports 2.4G WIFI.**

Image: Voice control functionality, allowing users to command the robot vacuum via smart assistants.

3. MAINTENANCE

3.1 RockDock Ultra Maintenance

The RockDock Ultra is designed for minimal maintenance. It features auto mop washing, self-drying to prevent odors, auto self-emptying of the dustbin (up to 7 weeks capacity), and self-refilling of the robot's water tank. The dock also self-cleans its base for easier upkeep. Regularly check the clean and dirty water tanks and the dust bag.

Ultimate Convenient All-In-One Dock



Image: An internal view of the RockDock Ultra, illustrating its comprehensive self-maintenance features.

3.2 Robot Component Maintenance

Periodically inspect and clean the robot's dual rubber brushes to prevent hair tangles. The intelligent mop lifting feature allows the mop to lift when vacuuming carpets or when returning to the dock, preventing cross-contamination. The main brush also lifts automatically when only mopping. Clean the washable filter regularly to maintain suction performance.

Reactive 3D Obstacle Avoidance

Identify and bypass common objects from scales, shoes to wires on floors, in both bright and dark rooms.

❗ To avoid potential hazards on the floors, please activate the "Reactive Obstacle Avoidance" on Roborock App.

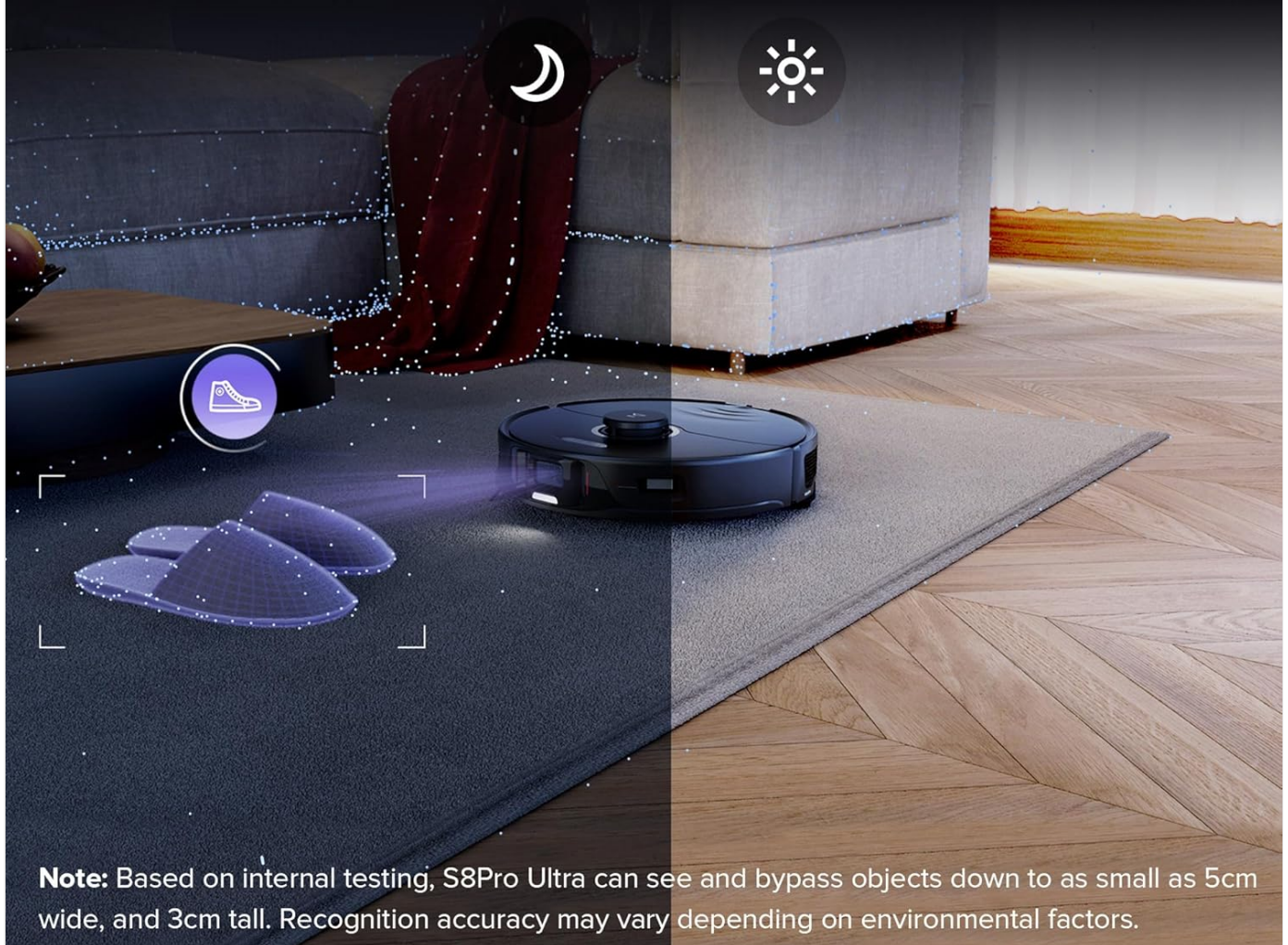


Image: Visual representation of the robot's automatic brush and mop lifting capabilities for versatile cleaning.

3.3 Dust Bag Replacement

The RockDock Ultra's self-emptying feature uses a disposable dust bag. When the dust bag is full, the app will notify you. Replace the dust bag regularly to ensure continuous optimal performance of the self-emptying function.

Disposable Dust Bag

If you find that the dust bag is full, please change the dust bag regularly.



Image: Instructions for replacing the disposable dust bag in the RockDock Ultra.

4. TROUBLESHOOTING

This section addresses common issues you might encounter with your Roborock S8 Pro Ultra.

- **Robot not charging:** Ensure the robot is correctly connected to the charging dock. Clean the charging contacts on both the robot and the dock regularly, as dirty contacts can prevent proper charging. Verify the power cable is securely connected to the dock and the outlet.
- **Robot loses direction or cannot return to dock:** If the robot is manually moved during cleaning or after a significant position change, it may re-generate its map. If the charging dock is too far away or not found on the app map, the robot may not return automatically and might need to be placed manually on the dock. Always start cleaning from the dock for optimal navigation.
- **Wi-Fi connection issues:** The robot vacuum only supports 2.4G WiFi. If you have a dual-band router, ensure your mobile device is connected to the 2.4G network during setup and that the robot is within range of the 2.4G signal. Consult your router's manual for instructions on switching to 2.4G if needed.
- **Poor cleaning performance (vacuuming):** Check if the dustbin is full or if the disposable dust bag in the dock

needs replacement. Clean the dual rubber brushes and the washable filter. Ensure no large debris is obstructing the suction inlet.

- **Poor cleaning performance (mopping):** Ensure the water tank is filled with clean water. Check if the mop cloth is dirty and needs washing or replacement. For stubborn stains, select the "High" water flow mode in the app.
- **Obstacle avoidance issues:** Ensure the "Reactive Obstacle Avoidance" feature is enabled in the Roborock app. Keep the robot's sensors clean and free from dust or debris.

5. SPECIFICATIONS

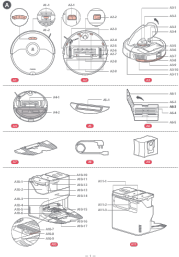




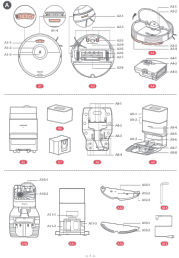
Feature	Detail
Brand	roborock
Model Name	S8 Pro Ultra
Color	Black
Product Dimensions	21.22"L x 20.31"W x 19.06"H
Item Weight	31.1 pounds
Battery Life	180 minutes
Suction Power	6000Pa
Mopping System	VibraRise 2.0 (3000 times/min scrubbing, >6N pressure)
Navigation	LiDAR Navigation, Reactive 3D Obstacle Avoidance
Dock Features	Auto Mop Washing, Auto Mop Drying, Self-Emptying (up to 7 weeks), Self-Refilling, Dock Self-Cleaning
Brush Type	Dual Rubber Brush
Filter Type	Washable Filter
Control Method	App, Amazon Echo, Google Home
Wi-Fi Support	2.4G WiFi only

6. WARRANTY AND SUPPORT

For detailed warranty information, please refer to the official Roborock website or the warranty card included with your product. Roborock offers various protection plans for extended coverage.

- **User Manual (PDF):** A comprehensive PDF version of the user manual is available for download [here](#).
 - **Online Support:** Visit the official Roborock support page for FAQs, troubleshooting guides, and contact information.
 - **Protection Plans:** Optional 2-Year and 3-Year protection plans are available for purchase to cover your device beyond the standard warranty.
-

Related Documents - S8 Pro Ultra

	<p>Roborock S7 Max Ultra Robot Vacuum and Mop Combo: Components and Assembly Guide</p> <p>A comprehensive guide detailing the components and assembly steps for the Roborock S7 Max Ultra robot vacuum and mop combo, featuring its docking station and accessories.</p>
	<p>Roborock S8 Pro Ultra Robotic Vacuum Cleaner User Manual</p> <p>Comprehensive user manual for the Roborock S8 Pro Ultra robotic vacuum cleaner, detailing safety precautions, installation, operation, app connectivity, maintenance, troubleshooting, and technical specifications.</p>
	<p>Roborock Qrevo Curv FAQ: Features, Advantages, and Comparisons</p> <p>Frequently asked questions about the Roborock Qrevo Curv robot vacuum cleaner, covering its key features, the advantages of its DuoDivide brush and FlexiArm Design Arc Side Brush, its multifunctional dock capabilities, and comparisons with the Qrevo Master.</p>
	<p>Roborock Saros 10 Robotic Vacuum Cleaner User Manual</p> <p>Comprehensive user manual for the Roborock Saros 10 Robotic Vacuum Cleaner with Refill and Drainage System. This guide covers setup, operation, maintenance, troubleshooting, and safety instructions for optimal performance.</p>
	<p>Roborock S7 Max Ultra Series Robotic Vacuum Cleaner User Manual</p> <p>Comprehensive user manual for the Roborock S7 Max Ultra Series robotic vacuum cleaner, covering setup, operation, maintenance, and troubleshooting for optimal performance.</p>
	<p>Roborock Q7 Max+ Robot Vacuum Cleaner User Guide</p> <p>This visual guide details the components and assembly of the Roborock Q7 Max+ Robot Vacuum Cleaner and its Auto-Empty Dock Pure, offering insights into setup and maintenance.</p>