

Fodsports FX10C

Fodsports FX10C Mesh Motorcycle Intercom User Manual

Model: FX10C

Brand: Fodsports

Overview	Package Contents	Device Layout	Installation	Basic Operations	Audio Multitasking
	Maintenance	Troubleshooting	Specifications	Warranty & Support	

1. OVERVIEW

The Fodsports FX10C is a versatile mesh motorcycle intercom system designed for enhanced communication and entertainment during rides. It features advanced Bluetooth 5.0 technology, supporting multi-channel mesh intercom for unlimited riders within a mile, and traditional 2-way Bluetooth intercom. Key functionalities include audio multitasking, music sharing, noise reduction, and voice assistant access.



Image: Two Fodsports FX10C intercom units, showcasing their sleek design and control buttons.

2. PACKAGE CONTENTS

The Fodsports FX10C package includes the following items:

- FX10C Intercom Unit (2x)
- Speaker & Hard Tube Microphone (Boom Mic)
- Button Microphone (Soft Mic)
- USB Cable (Type-C)
- Clip Mounting Bracket
- 3M Tape Bracket
- Velcro Pads
- Wrench & Screws
- User Manual / Start Guide



Image: A comprehensive view of all components included in the Fodsports FX10C package, neatly arranged.

3. DEVICE LAYOUT AND CONTROLS

The FX10C unit features intuitive controls for easy operation:

- **Power Button:** Central button for power on/off, play/pause music, and intercom functions.
- **Volume Up (+) Button:** Increases volume, navigates forward.
- **Volume Down (-) Button:** Decreases volume, navigates backward.
- **Mesh Button:** Activates/deactivates Mesh intercom, channel switching.
- **Type-C Charging Port:** Universal port for charging.
- **Microphone/Speaker Port:** Connects the helmet speakers and microphone.



Image: A detailed view of the Fodsports FX10C unit, highlighting the power, volume, and mesh buttons.

4. INSTALLATION

The FX10C communication system is designed for easy installation on various helmet types. Choose between the clip mounting bracket or the 3M tape bracket based on your helmet's design and preference.

4.1 Helmet Mounting

1. **Attach Mounting Bracket:** Secure the chosen bracket (clip or 3M tape) to the side of your helmet. Ensure it is firmly attached and does not obstruct your vision or helmet functionality.
2. **Mount the FX10C Unit:** Slide the FX10C unit onto the installed bracket until it clicks securely into place.
3. **Connect Speakers and Microphone:** Route the speaker and microphone wires inside the helmet. Use the provided Velcro pads to secure the speakers inside the helmet's ear pockets, ensuring they are positioned directly over your ears for optimal sound.
4. **Choose Microphone:** Select the appropriate microphone for your helmet type: the boom mic for open-face or modular helmets, and the soft mic for full-face helmets. Secure the microphone near your mouth.



Image: A visual guide demonstrating the steps to install the FX10C unit and its components onto a motorcycle helmet.

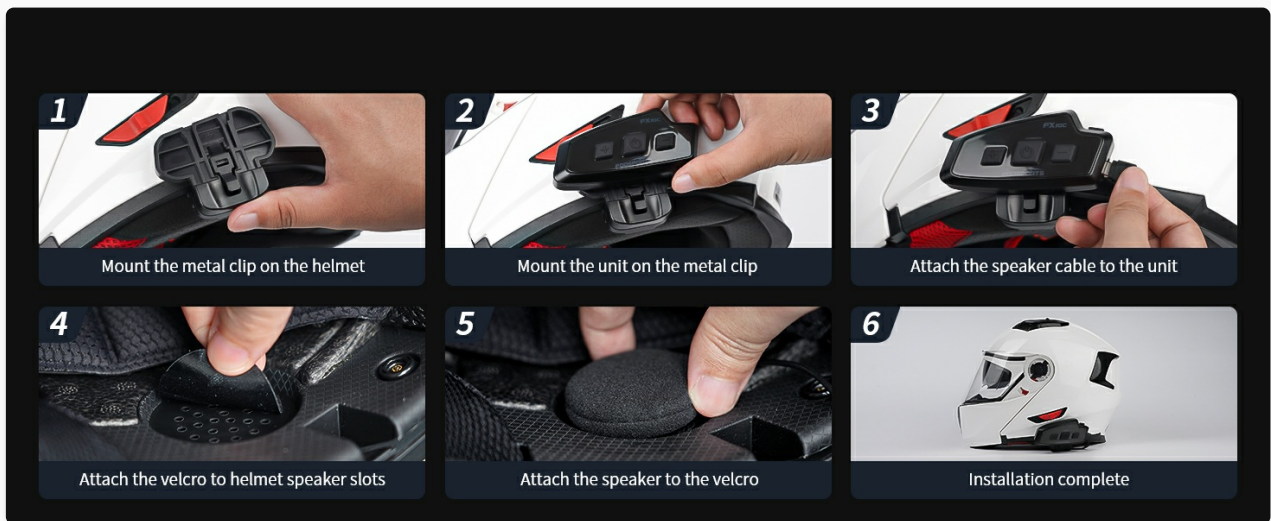


Image: Instructions detailing how to safely remove the FX10C unit from its helmet mounting bracket.

5. BASIC OPERATIONS

5.1 Power On/Off

- **Power On:** Long press the Power button for 2 seconds until the blue indicator light flashes.
- **Power Off:** Long press the Power button for 2 seconds until the red indicator light flashes and then turns off.

5.2 Volume Control

- **Increase Volume:** Short press the Volume Up (+) button.
- **Decrease Volume:** Short press the Volume Down (-) button.

5.3 Bluetooth Pairing (Phone)

To pair your FX10C with your mobile phone:

1. Ensure the FX10C unit is powered off.
2. Long press the Power button and the Volume Up (+) button simultaneously for 3 seconds until the red

and blue lights flash quickly, indicating pairing mode.

3. On your mobile phone, enable Bluetooth and search for "Fodsports FX10C".
4. Select "Fodsports FX10C" to connect. A voice prompt will confirm successful pairing.

Your browser does not support the video tag.

Video: This video demonstrates the process of pairing the Fodsports FX10C with a mobile phone and initiating music sharing between two units.

5.4 Mesh Intercom Pairing

The FX10C supports multi-channel mesh intercom for group communication:

1. Power on all FX10C units you wish to connect.
2. On each unit, long press the Mesh function button for 8 seconds to reset the Mesh channel (default channel 4).
3. Short press the Mesh button on each unit to start the Mesh function. The units will automatically search for nearby Mesh networks and join the intercom.

Your browser does not support the video tag.

Video: An introductory video explaining the features and setup of the FX10C mesh headset, including mesh pairing.

5.5 Music Playback and Sharing

- **Play/Pause Music:** Short press the Power button.
- **Music Sharing:** Through two FX10C headsets paired with each other, you can listen to the same music with another rider or passenger within 100m. Double-click the Mesh button on both devices to initiate music sharing.

5.6 Voice Assistant

Access your phone's voice assistant (e.g., "Hey Google" / "Hey Siri") for hands-free control of calls, music, and GPS navigation.



Image: The FX10C unit demonstrating voice command capabilities, showing integration with 'Hey Google' and 'Hey Siri'.

5.7 FM Radio

The FX10C includes a built-in FM radio. Refer to the detailed user guide for specific instructions on scanning and saving stations.



Press the upper clip



Move the unit upward to remove it

Image: A visual representation of the FM radio interface, likely accessible via a connected smartphone, showing tuning options.

6. AUDIO MULTITASKING

The FX10C features audio multitasking technology, allowing you to have intercom conversations while simultaneously listening to music or GPS navigation instructions. This ensures continuous communication without interrupting your audio experience.

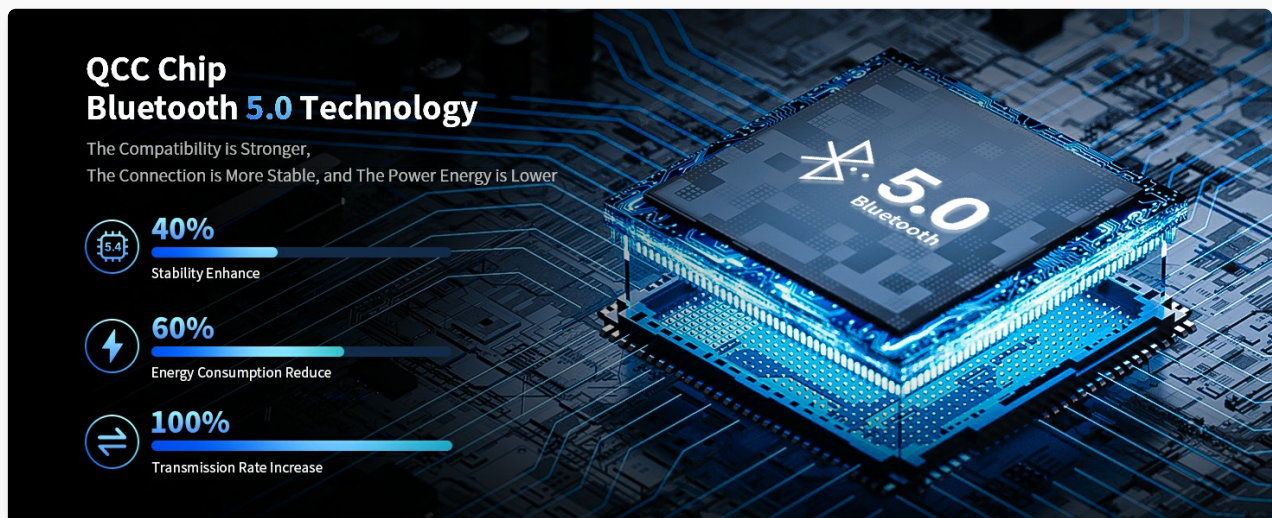


Image: An illustration depicting the audio multitasking capability of the FX10C, allowing simultaneous music, intercom, and GPS navigation.

7. MAINTENANCE

7.1 Cleaning

Wipe the unit with a soft, damp cloth. Avoid using harsh chemicals or abrasive cleaners that could damage the surface.

7.2 Charging

Charge the FX10C using the provided Type-C USB cable. A full charge takes approximately 3 hours. The unit

supports up to 15 hours of phone time, 15 hours of intercom time, and up to 300 hours of standby time.

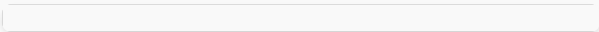


Image: An illustration showing the FX10C unit connected to a Type-C charger, with indicators for charging time and battery life.

7.3 Water Resistance

The FX10C features an IP65 waterproof and dustproof design, allowing it to be used in various weather conditions. However, avoid prolonged submersion in water.

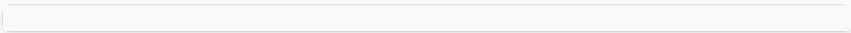


Image: The FX10C unit shown with water droplets, emphasizing its IP65 waterproof rating for use in various weather conditions.

8. TROUBLESHOOTING

If you encounter issues with your FX10C, please refer to the following common solutions:

- **Device not powering on:** Ensure the battery is charged. Connect to a power source and try again.
- **Cannot pair with phone/intercom:** Ensure both devices are in pairing mode. Try resetting the Mesh channel (long press Mesh button for 8 seconds) and re-pairing.
- **No sound/low volume:** Check volume levels on both the FX10C and your connected device. Ensure speakers are correctly positioned in the helmet.
- **Intercom connection drops:** Ensure units are within range. Obstacles or interference can affect connection stability.
- **Poor sound quality:** Verify microphone placement and ensure it's not obstructed. The CVC Digital Noise Reduction chip helps maintain clear sound even at high speeds.

For further assistance, please contact Fodsports Direct customer support.

9. SPECIFICATIONS

Feature	Detail
Model Name	FX10C
Connectivity Technology	Wireless (Bluetooth 5.0)
Bluetooth Version	5.0
Bluetooth Range	Up to 100 meters (point-to-point)
Mesh Intercom Range	Up to 1 mile (unlimited riders)
Battery Capacity	800mAh Lithium Polymer
Phone Time	Up to 15 hours
Intercom Time	Up to 15 hours



Feature	Detail
Standby Time	Up to 300 hours
Charging Time	Approximately 3 hours
Water Resistance Level	IP65
Noise Control	Active Noise Cancellation (CVC Digital Noise Reduction)
Special Features	Built-In Voice Assistant, Fast Charging, Music Share, FM Radio, Audio Multitasking
Compatible Devices	Fodsports FX4 Pro, FX6, FX8, M1S Pro (and other universal Bluetooth intercoms)

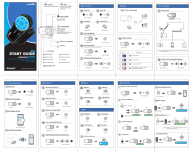
10. WARRANTY AND SUPPORT

Fodsports offers a worry-free service for the FX10C intercom. If you encounter any problems or have questions, please contact Fodsports Direct customer support. They aim to reply within 12 hours.

To contact support, navigate to the product page on Amazon, click on "Fodsports Direct", and then select "ASK A QUESTION".

Related Documents - FX10C

	<p>Fodsports M1-S AIR Motorcycle Bluetooth Intercom User Manual</p> <p>Comprehensive user manual for the Fodsports M1-S AIR motorcycle Bluetooth intercom system. Learn about installation, features, pairing, music sharing, intercom functions, and safety precautions.</p>
	<p>FODSPORTS M1-S PRO Bluetooth Intercom Headset - Start Guide</p> <p>Comprehensive start guide for the FODSPORTS M1-S PRO Bluetooth intercom headset, covering setup, functions, music sharing, intercom, charging, and installation.</p>



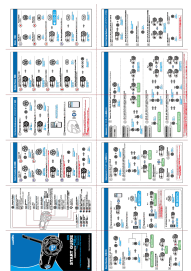
[Fodsports FX8 Bluetooth Intercom System: Start Guide](#)

A comprehensive guide to the Fodsports FX8 Bluetooth intercom system, covering setup, pairing, intercom functions, music sharing, FM radio, and technical specifications. Learn how to connect with other riders and enjoy your journey.



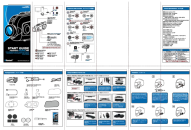
[Fodsports M1-S PRO Bluetooth Intercom User Manual](#)

Comprehensive user manual for the Fodsports M1-S PRO Bluetooth intercom system, covering installation, operation, pairing, music sharing, group intercom, charging, and safety precautions.



[FODSPORTS FX8 PRO Bluetooth Intercom System Quick Start Guide](#)

A concise guide to setting up and using the FODSPORTS FX8 PRO Bluetooth intercom system for motorcycle helmets, covering pairing, music sharing, intercom functions, and installation.



[FODSPORTS FX30C PRO Helmet Bluetooth Intercom with Camera: Start Guide](#)

A comprehensive start guide for the FODSPORTS FX30C PRO Helmet Bluetooth Intercom Headset with Camera, covering basic functions, camera and video operations, intercom features, music sharing, FM radio, installation, and technical specifications.