



[Manuals.plus](#) /

› [MYMG](#) /

› Instruction Manual for MYMG Motor and Remote Control Upgrade Kit for Lego Technic Mercedes-AMG F1 W14 E Performance 42171

MYMG 42171 Super Motor

Instruction Manual for MYMG Motor and Remote Control Upgrade Kit

COMPATIBLE WITH LEGO TECHNIC MERCEDES-AMG F1 W14 E PERFORMANCE 42171

Model: 42171 Super Motor | Brand: MYMG

1. Introduction

This instruction manual provides detailed guidance for installing and operating the MYMG Motor and Remote Control Upgrade Kit, designed to bring dynamic movement to your Lego Technic Mercedes-AMG F1 W14 E Performance 42171 model. This kit allows you to transform your static model into a remote-controlled vehicle, enhancing playability and interaction.



Image: The MYMG upgrade kit packaging alongside the compatible Lego Technic Mercedes-AMG F1 W14 E Performance 42171 model.

2. What's Included

Please verify that all components listed below are present in your package before beginning installation. If any parts are missing or damaged, please contact customer support.



30%
increase in power



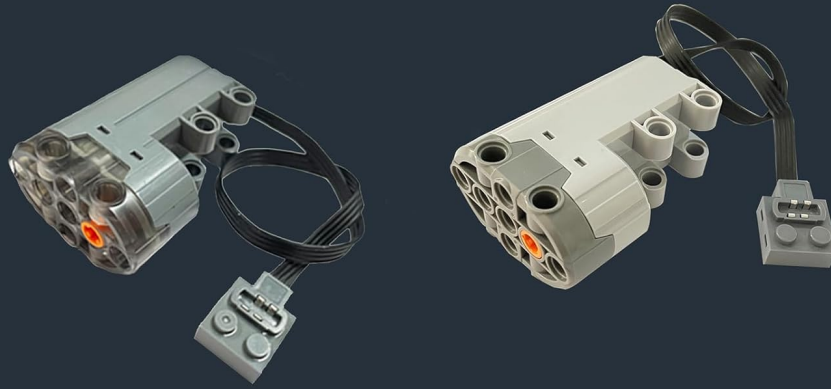
Name: L- motor

Size: 56×30×25mm

Function: Low noise
High speed
Super power

Image: All components of the MYMG Motor and Remote Control Upgrade Kit, including motors, remote, battery, and accessories.

- **L Motor (x2):** Provides power for movement. These motors offer increased power for enhanced performance.



30%
increase in power



Name: Servo - motor

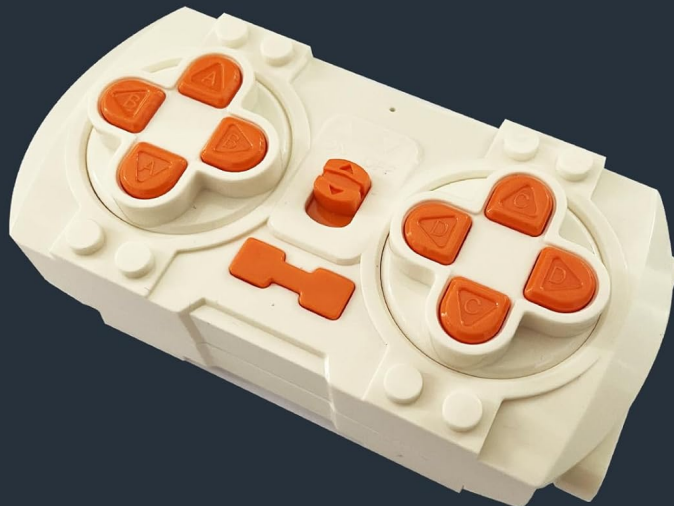
Size: 55×40×25mm

Function: Low noise

The cross hole rotates $\pm 90^\circ$,
easy to turn

Image: Detailed view of the L-Motor, highlighting its low noise, high speed, and super power functions.

- **Servo Motor (x1):** Controls steering. This motor ensures precise turning capabilities.



Name: Remote control

Size: 100×49×30mm

Function: Key combination

Main control module motor
output direction change

Image: Detailed view of the Servo Motor, noting its low noise and 90-degree cross hole rotation for easy turning.

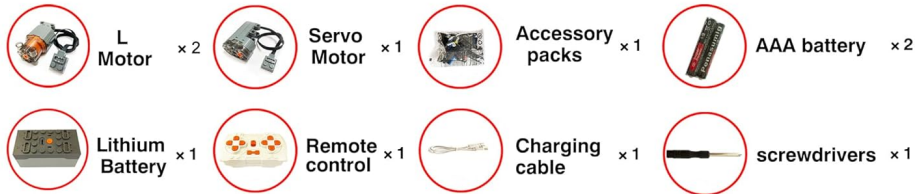
- **Remote Controller (x1):** For manual control of the model.



Image: Detailed view of the Remote Control, designed for key combination control and motor output direction changes.

- **Lithium Battery (x1):** Powers the motors and receiver. Features a built-in receiver chip for various control modes.

Packing List



Why Choose Us






My Products	Other products
 <p>Super motor faster more powerful</p>	 <p>Ordinary motor low speed weak power</p>
 <p>High gear fit no noise</p>	 <p>Low gear fit noise from gear collision damage to the model</p>
 <p>Excellent After Sales Service 1. Enthusiastic service attitude 2. Quickly solve your problems (within 12 hours)</p>	<p>No after-sales service</p>

Image: Detailed view of the Lithium Battery, which includes a built-in receiver chip supporting remote control, gyroscope, path, and programming modes.

- **Accessory Pack (x1):** Contains various small parts necessary for installation.
- **AAA Battery (x2):** For the Remote Controller.
- **Installation Explanation QR code (x1):** Provides access to detailed PDF installation instructions.

3. Safety Information

WARNING:

- This product contains small parts which may pose a choking hazard. Keep out of reach of small children.
- Adult supervision is recommended during assembly and operation.
- Do not expose the lithium battery to extreme temperatures, direct sunlight, or water.
- Ensure proper battery polarity when inserting AAA batteries into the remote controller.

4. Setup and Installation

The MYMG upgrade kit is designed for integration with your Lego Technic Mercedes-AMG F1 W14 E Performance 42171 model. Please note that the Lego model itself is not included with this kit.

Installation Instructions:

1. **Accessing Detailed Instructions:** Scan the QR code provided in the lithium battery package to access the comprehensive PDF installation guide. This guide provides step-by-step visual instructions for integrating the motors and control system into your Lego model.
2. **Recommended Installation Method:** For optimal ease of installation, it is highly recommended to integrate the upgrade kit components during the initial assembly of your Lego model. If your model is already assembled, you may need to partially disassemble sections to properly install the motors and wiring.
3. **Component Placement:** The overall design of the MYMG RC modification aims for a hidden integration, ensuring the aesthetics of your model are maintained. Follow the PDF instructions carefully for precise placement of the L Motors, Servo Motor, and wiring.
4. **Battery Installation:** Insert the two AAA batteries into the remote controller, observing correct polarity.
5. **Lithium Battery Charging:** Fully charge the lithium battery before its first use using the provided charging cable.

If you encounter any difficulties during installation, please refer to the detailed PDF instructions or contact MYMG customer support for assistance.

5. Operating Instructions

Once installed, your Lego Technic Mercedes-AMG F1 W14 E Performance 42171 model can be controlled using either the included remote controller or a dedicated mobile application.

Remote Control Operation:

- The remote controller allows for basic directional movement.
- Use the directional pads to control forward, backward, left turn, and right turn movements.
- The steering wheel of your model will be linked to the front wheels, providing realistic steering action.
- Note that the remote control typically offers a single speed setting. For variable speed control, utilize the mobile application.

Mobile Application (APP) Control:

- Download the official MYMG control APP by scanning the QR code found in the instruction manual within the lithium battery package.
- The APP offers advanced control modes for a more engaging experience:
 - **Remote Control Mode:** Provides standard directional control with adjustable speed settings.
 - **Gyroscope Mode:** Control the model by tilting your mobile device.
 - **Path Mode:** Draw a path on your screen for the model to follow.
 - **Programming Mode:** Create custom sequences of movements for your model.

6. Maintenance

To ensure the longevity and optimal performance of your MYMG Motor and Remote Control Upgrade Kit, follow these maintenance guidelines:

- **Cleaning:** Use a soft, dry cloth to gently wipe down the motors, battery, and remote control. Avoid using harsh chemicals or abrasive materials.
- **Storage:** Store the kit components in a cool, dry place away from direct sunlight and extreme temperatures. If storing for extended periods, ensure the lithium battery is partially charged (around 50%) and recharge it every few months to prevent deep discharge.
- **Battery Care:** Do not overcharge or completely drain the lithium battery. Disconnect the battery from the model when not in use.
- **Component Inspection:** Periodically check all connections and gears for any signs of wear or damage. Ensure all parts are securely fitted.

7. Troubleshooting

If you encounter issues with your MYMG upgrade kit, please refer to the following common problems and solutions:

- **Model Not Responding:**
 - Ensure the lithium battery is fully charged and properly connected.
 - Check that the remote controller has fresh AAA batteries and is powered on.
 - Verify that the lithium battery's built-in receiver chip is properly paired with the remote or APP.
- **Gears Slipping or Poor Movement:**
 - This often indicates an issue with the connection between the axle and the differential within the Lego model. Carefully review the installation instructions to ensure all gears and axles are correctly aligned and secured.
 - Ensure no foreign objects are obstructing the gears.
- **Steering Issues (e.g., Steering Backwards):**
 - Verify the servo motor's installation and connection according to the PDF instructions.
 - If using the APP, check for any calibration or direction reversal settings.
- **Short Battery Life:**
 - Ensure the lithium battery is fully charged before each use. Typical run time can vary based on usage intensity.
 - Avoid continuous high-load operation, which can deplete the battery faster.
- **Difficulty with Installation Instructions:**
 - The installation instructions are provided in PDF format via a QR code. If you find the instructions difficult to read, try enlarging them on a larger screen (e.g., tablet or computer).
 - For further assistance, contact MYMG customer support.

If the problem persists after attempting these solutions, please contact MYMG customer support for further assistance.

8. Product Specifications

Feature	Specification
Product Dimensions	9.06 x 6.89 x 2.15 inches
Item Weight	13.7 ounces
Country of Origin	China
ASIN	B0BV26MT1F
Item Model Number	1
Manufacturer Recommended Age	16 years and up
Manufacturer	MYMG

9. Warranty and Support

MYMG is committed to providing high-quality products and excellent customer service. For any questions, concerns, or support needs regarding your Motor and Remote Control Upgrade Kit, please contact MYMG customer support.

Contact Information:

- Refer to the contact details provided in your product packaging or on the official MYMG website.
- You may also reach out via the platform where you purchased the product.

Please have your product model number (42171 Super Motor) and purchase details ready when contacting support to facilitate a quicker resolution.