

TABYIK 6.5L Humidifier

TABYIK 6.5L Humidifier Instruction Manual

1. INTRODUCTION

Thank you for choosing the TABYIK 6.5L Humidifier. This cool mist humidifier is designed to enhance the air quality in your home, providing customized humidity levels for comfort, sleep, and plant health. Please read this manual thoroughly before operation to ensure proper use and maintenance.

2. PRODUCT FEATURES

- **6.5L (1.6 Gallon) Large Capacity:** Provides up to 60 hours of continuous cool mist on low settings, reducing the need for frequent refills.
- **Top-Fill Design:** Simplifies refilling and cleaning processes.
- **Smart Humidistat:** Allows customization of target humidity levels from 55% to 90%.
- **Adjustable Mist Output:** Offers 3 mist levels to achieve desired humidity.
- **Night Light Function:** Features a gentle, non-dazzling light that can be turned on or off.
- **24-Hour Timer:** Set the humidifier to operate for a specific duration, ideal for overnight use.
- **Essential Oil Diffuser:** Includes a dedicated box for adding essential oils to infuse your space with fragrance.
- **Sleek and Portable Design:** Compact size (9.9*6.2*12.8 inches) suitable for various rooms.
- **Low-Water Security Protection:** Automatically stops operation when the water reservoir is empty.

3. PACKAGE CONTENTS

Upon unpacking, please ensure all items are present and in good condition:

- TABYIK 6.5L Humidifier Unit (Base and Water Tank)
- Top Cover
- Cleaning Brush
- Aroma Pads (for essential oil diffuser)

- User Manual

4. SETUP

1. **Unpack and Inspect:** Carefully remove all components from the packaging. Inspect for any damage.
2. **Remove Protective Materials:** Before first use, ensure all white protective foam and tape are removed from the base and water tank. This is crucial for proper operation.



Image: A hand removing a white protective foam piece from the humidifier's base, with an arrow indicating the removal direction.

3. **Place on a Flat Surface:** Position the humidifier on a firm, flat, and waterproof surface at least 6 inches away from walls and appliances.
4. **Fill the Water Tank:**
 - Remove the top cover.
 - Pour clean, cool water directly into the tank. Distilled or filtered water is recommended to prevent mineral buildup. Do not exceed the 'MAX' fill line indicated on the tank.
 - Replace the top cover securely.

Larger Capacity Longer Runtime

The tank is large enough to run all night at high humidification without running out of water.

Also it has 24Hours Timer

Suitable Range

220~500 ft²

Timer Setting

2-24 Hours



Image: Two panels illustrating the top-fill method. One shows water being poured directly into the top opening, and the other shows the top cover removed for filling from a faucet.

5. **Connect Power:** Plug the power cord into a suitable electrical outlet.

5. OPERATING INSTRUCTIONS

The humidifier features an intuitive touch control panel for easy operation.



Image: A close-up of the humidifier's control panel, showing the digital display and touch buttons for power, mist level, night light, and timer.

1. **Power On/Off:** Touch the **Power Button** (☰) to turn the humidifier on or off.
2. **Adjust Mist Level:** Touch the **Mist Level Button** (☰) repeatedly to cycle through 3 mist output levels (Low, Medium, High).

Customize Humidity

Set the constant humidity in the range of 55%~90% for the humidifier according to your needs



Image: The humidifier displaying three adjustable mist levels, with corresponding mist intensity visuals.

3. **Smart Humidistat (Auto Mode):** Touch the **Auto Mode Button** (🔌) to activate auto mode. In this mode, you can set a target humidity percentage from 55% to 90%. The humidifier will automatically adjust mist output to maintain this level.




Image: The humidifier operating with smart humidity control, showing a target of 60% humidity in a natural setting.

4. **Night Light:** Touch the **Night Light Button** (🔌) to turn the gentle night light on or off.



Image: The humidifier with its night light on, providing a gentle glow in a dark bedroom, with a sleeping person in the background.

5. **Timer Setting:** Touch the **Timer Button** () to set an operating time from 1 to 24 hours. The humidifier will automatically turn off once the set time expires.
6. **Essential Oil Diffuser:** Locate the essential oil box on the side of the humidifier. Push to open the tray, add 4-5 drops of your preferred essential oil to the sponge, and then close the tray. The aroma will diffuse with the mist.

Video: A demonstration of how to open the essential oil tray, add drops of essential oil to the pad, and close the tray on the humidifier.

7. **Low-Water Protection:** The humidifier will automatically stop operating and the indicator light will turn red when the water level is too low. Refill the tank to resume operation.

6. MAINTENANCE AND CLEANING

Regular cleaning is essential to maintain optimal performance and prevent mineral buildup.

1. **Daily Maintenance:** Empty and rinse the water tank daily. Refill with fresh water.
2. **Weekly Cleaning:**
 - Unplug the humidifier and disassemble all removable parts.
 - Clean the water tank and base with a soft brush or fine cloth. Ensure water does not enter the air outlet in the base.
 - Wipe the silica gel ring to prevent accumulation of unfiltered water residue.
 - For stubborn mineral buildup, use a descaling solution or a mixture of white vinegar and water.
 - Rinse all parts thoroughly and allow them to air dry completely before reassembling.

Video: A demonstration of how to clean the humidifier, including disassembling parts and wiping down the base and water tank.

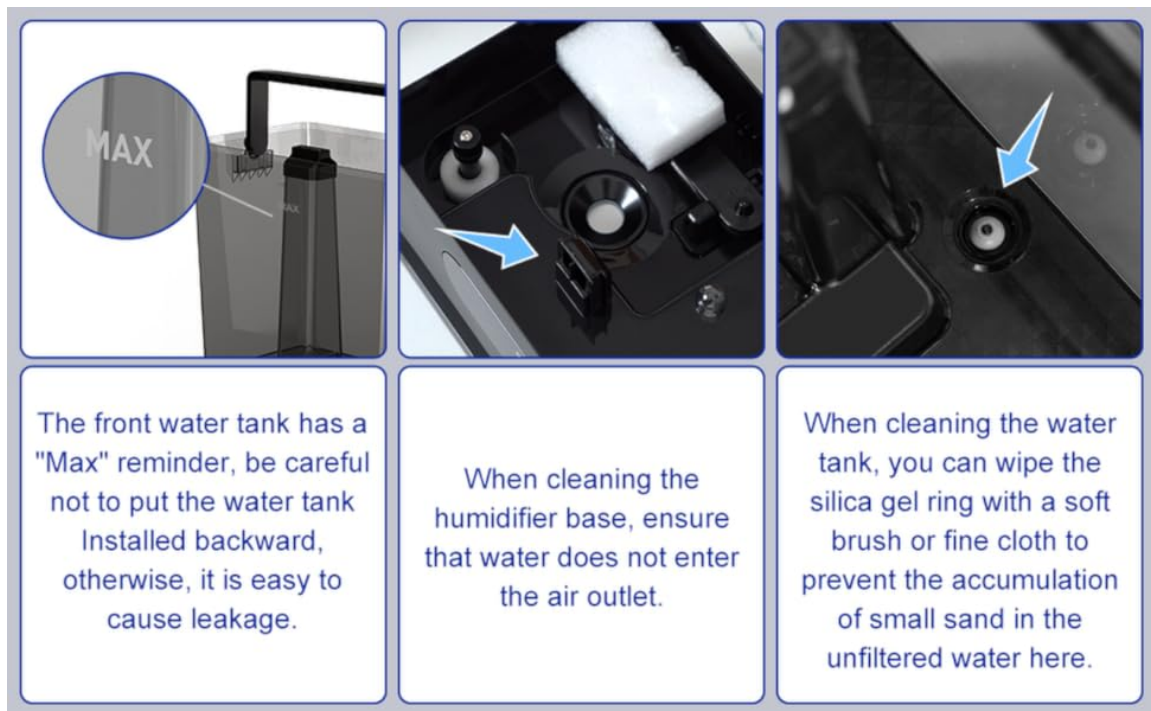


Image: A multi-panel image detailing cleaning steps, including max water reminder, cleaning the humidifier base, and wiping the silica gel ring.

7. TROUBLESHOOTING

If your humidifier is not functioning as expected, please refer to the following common issues and solutions:

- **No Mist:**
 - Check if the humidifier is plugged in and powered on.
 - Ensure there is enough water in the tank.
 - Verify the top cover is correctly placed.
- **Unusual Odor:**
 - Clean the water tank and base thoroughly.
 - Replace old water with fresh water.
- **Excessive Noise:**
 - Ensure the humidifier is on a flat, stable surface.
 - Check for any foreign objects in the water tank or base.
- **Water Leakage:**
 - Do not overfill the water tank beyond the 'MAX' line.
 - Ensure all parts are correctly assembled and sealed.

For further assistance, please contact customer support.

8. SPECIFICATIONS

- **Brand:** TABYIK
- **Model:** 6.5L Humidifier
- **Capacity:** 6.5 Liters (1.6 Gallons)

- **Operation Mode:** Automatic / Manual
- **Special Features:** Adjustable Humidity Control, Aroma Diffuser, Auto Shut Off, Night Light, Removable Tank
- **Product Dimensions:** 6.22"D x 9.88"W x 12.87"H
- **Item Weight:** 4.93 pounds
- **Room Type:** Bedroom (suitable for large rooms)

9. WARRANTY AND SUPPORT

For warranty information and customer support, please refer to the product packaging or visit the official TABYIK website. Keep your purchase receipt for warranty claims.