

THINKWARE TW-U3000MU64C

THINKWARE U3000 Dash Cam User Manual

Model: TW-U3000MU64C | Brand: THINKWARE

1. INTRODUCTION

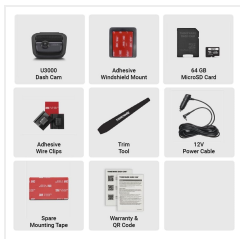
The THINKWARE U3000 is an advanced 4K UHD dash camera designed to provide comprehensive vehicle surveillance and driving assistance. Equipped with cutting-edge technology, including a STARVIS 2 sensor for superior night vision, built-in GPS, 5GHz Wi-Fi, and radar for enhanced parking mode, the U3000 ensures high-quality video recording and intelligent alerts for a safer driving experience. This manual provides essential information for setup, operation, and maintenance of your dash cam.

2. KEY FEATURES

- **4K UHD Front Recording:** Captures crystal-clear footage with a 4K (3840x2160) resolution.
- **STARVIS 2 Sensor & Super Night Vision 4.0:** Delivers enhanced clarity and detail in low-light conditions.
- **Built-in 5GHz Wi-Fi & Bluetooth:** Enables fast file transfers and seamless connection with the Thinkware Link App.
- **Built-in GPS:** Tracks speed and time data, providing alerts for red light and speed cameras.
- **Radar Parking Mode:** Offers prolonged parking surveillance with buffered recording when motion or impact is detected.
- **Smart Parking Mode:** Prevents heat-related damage by switching to a low-power mode when internal temperature is high.
- **Thinkware Connected App:** Provides remote live view, instant impact notifications, vehicle status, and driving history (requires internet connection).
- **Advanced Driver Assistance System (ADAS):** Includes Front Vehicle Departure Warning (FVDW), Forward Collision Warning System (FCWS), and Lane Departure Warning System (LDWS) for increased road safety.

3. WHAT'S IN THE BOX

Your THINKWARE U3000 package includes the following components:



The complete set of items included with the THINKWARE U3000 Dash Cam, such as the main unit, mounting accessories, and cables.

- U3000 Dash Cam (Front Unit)
- Adhesive Windshield Mount
- 64GB MicroSD Card
- Adhesive Wire Clips
- Trim Tool
- 12V Power Cable
- Spare Mounting Tape
- Warranty & QR Code Card
- CPL Filter (Circular Polarizing Lens)

4. SETUP

4.1 Mounting the Dash Cam

The U3000 dash cam is designed for easy installation on your vehicle's windshield. The included adhesive mount ensures a secure fit. The camera lens can be adjusted to capture the optimal viewing angle.



The main dash cam unit is shown with its adhesive mount, ready for attachment to the windshield. The camera's angle can be adjusted to ensure proper road coverage.

4.2 Connecting Power

Connect the provided 12V power cable to your vehicle's cigarette lighter socket and the dash cam. For advanced parking surveillance features, an optional OBD-II power adapter or hardwiring cable (sold separately) is recommended for continuous power supply.

4.3 MicroSD Card Insertion

Insert the included 64GB MicroSD card into the designated slot on the side of the dash cam. Ensure it clicks into place. The dash cam will automatically format the card upon first use.

4.4 CPL Filter Installation

The Circular Polarizing Lens (CPL) filter helps reduce dashboard reflections and enhance color saturation. Carefully attach the CPL filter to the front camera lens, aligning it with the guide points for optimal performance. It can be removed if not desired.

5. OPERATING INSTRUCTIONS

5.1 Initial App Pairing (Thinkware Link App)

To access full features and settings, pair your dash cam with the Thinkware Link App via Bluetooth. Once paired, you can manage settings and view live footage.



A smartphone screen displaying the Thinkware Link App, showing the U3000 dash cam connected, enabling easy device pairing and management.

5.2 Basic Operation

The dash cam automatically begins continuous recording when powered on. Use the physical buttons on the unit to manually trigger event recordings or control Wi-Fi and microphone functions.

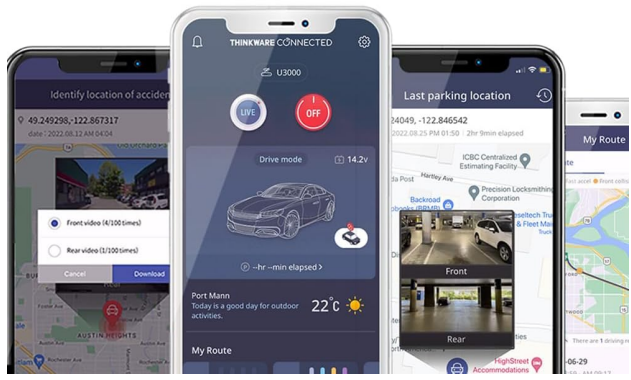
5.3 App Usage (Thinkware Link & Thinkware Connected)

The Thinkware Link App allows you to view live footage, adjust camera settings, and download recorded videos. The Thinkware Connected App provides remote access and notifications.

「THINKWARE CONNECTED」

Receive impact notifications or monitor remotely what's happening around your vehicle via your smartphone with the THINKWARE CONNECTED*.

* Connecting the dash cam to a mobile hotspot device or a Wi-Fi network with Internet access will consume data. Carrier/Service Provider charges may apply.



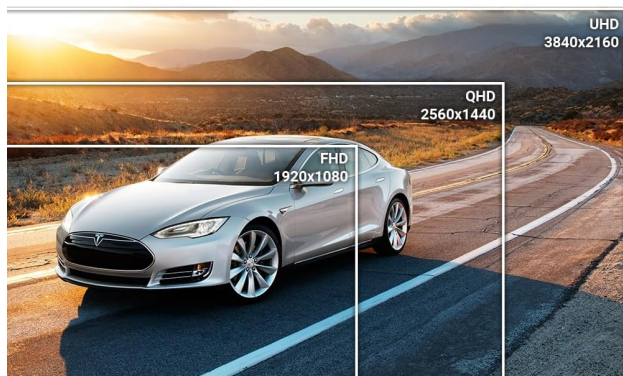
Multiple smartphone screens showcasing the Thinkware Connected App's interface, including live vehicle monitoring, impact notifications, and location tracking.

Live View

Access the live view through the app to see what your dash cam is recording in real-time. You can switch between front and rear camera views (if a rear camera is connected) and monitor driving data like speed and voltage.

「4K UHD Front Resolution」

The U3000 delivers improved 4K recording performance compared to the U1000, thanks to Sony's new STARVIS 2 image sensor and a more powerful Ambarella CPU. The addition of an adjustable bitrate offers the flexibility to record sharper footage.



An image demonstrating the 4K UHD front recording capability of the U3000, showing a clear road view with resolution comparisons.

Settings

Customize various settings including video resolution (4K 30fps, QHD 60fps), image quality, brightness, Super Night Vision 4.0 activation, G-sensor sensitivity for continuous and parking modes, motion detection sensitivity, and radar sensitivity for both front and rear. You can also configure external battery saving options and off-timer settings.

Accessing Recorded Videos

Browse recorded videos by file or by day. You can stream videos directly from the dash cam to your phone, download them for offline viewing, or delete unwanted files.

5.4 Parking Surveillance Mode

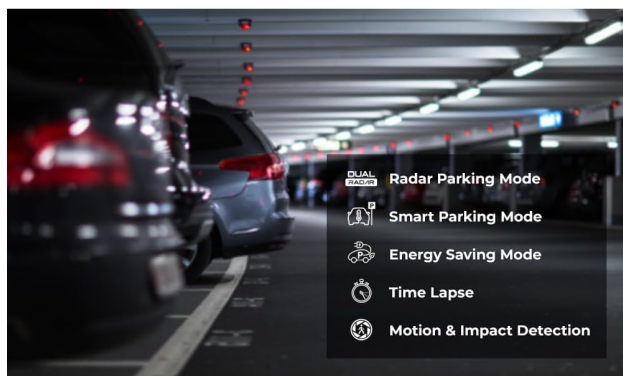
With hardwiring, the U3000 offers various parking surveillance modes:

- **Radar Parking Mode:** Utilizes radar to detect motion in a selected range, saving 20-second video clips (10s before and 10s after the event).
- **Motion Detection:** Records when motion is detected in front of the camera lens.
- **Time Lapse:** Records at 2fps for extended periods of uninterrupted video.
- **Energy Saving:** Records only when impacts are detected, reducing power consumption.

「Parking Surveillance Mode*」

With hardwiring installation, enjoy parking protection against potential mishaps and hit-and-runs by capturing footage when an impact or motion is detected (hardwiring cable or OBD-II cable required).

* Requires hardwiring cable accessory (included) and installation (professional installation recommended) or a THINKWARE OBD II cable accessory.



A visual representation of the various parking surveillance modes available, including Radar Parking Mode, Smart Parking Mode, Energy Saving Mode, Time Lapse, and Motion & Impact Detection.

5.5 Advanced Driver Assistance System (ADAS)

The ADAS features provide audible alerts to enhance driving safety:

- **Front Vehicle Departure Warning (FVDW):** Alerts when the vehicle in front starts to move.
- **Forward Collision Warning System (FCWS):** Alerts when the distance to the vehicle ahead becomes too close.
- **Lane Departure Warning System (LDWS):** Alerts when the vehicle drifts off its designated lane.
- **Rear Collision Warning System (RCWS):** Notifies if a vehicle is tailgating for more than 5 seconds within a certain distance.

「ADAS & Safety Camera Alert」

• Rear Collision Warning System (RCWS)

The Rear Collision Warning feature notifies you of any vehicles tailgating you for more than 5 sec within a distance of 5m to 10m and saves a recording separately under the 'events' folder.

• Front Vehicle Departure Warning (FVDW)

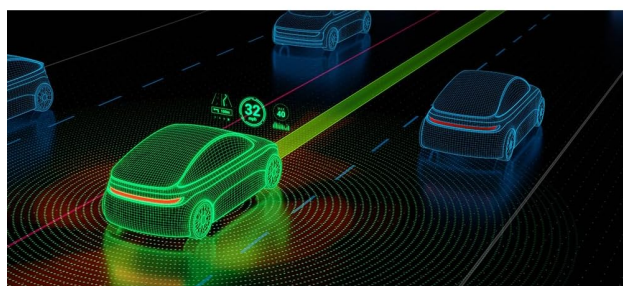
Alerts the driver when the vehicle in front has started to move when the driver is at a full stop

• Forward Collision Warning System (FCWS)

Calculates the speed and distance of the vehicle ahead, alerting the driver when the following distance becomes too close while travelling at speeds exceeding 40km/h

• Lane Departure Warning System (LDWS)

Alerts the driver when the vehicle drifts off its designated lane when driving over 50km/h



An illustrative image showing a car on a road with digital overlays indicating ADAS warnings such as lane departure and forward collision alerts.

5.6 Speed and Red Light Camera Alerts

The built-in GPS antenna enables the dash cam to alert you of upcoming red light cameras and speed cameras, helping you stay informed and avoid violations.

6. MAINTENANCE

6.1 MicroSD Card Management

Regularly format your MicroSD card through the Thinkware Link App to ensure optimal recording performance and prevent data corruption. Use only genuine THINKWARE memory cards or Class 10 (or higher) cards from reputable brands for reliable operation.

6.2 Firmware Updates

Keep your dash cam's firmware updated to ensure the best performance and access to new features. Firmware updates can typically be downloaded from the official THINKWARE website or via the Thinkware Link App.

7. TROUBLESHOOTING

If you encounter any issues with your THINKWARE U3000, consider the following common troubleshooting steps:

- **Connectivity Issues:** Ensure Bluetooth and Wi-Fi are enabled on your smartphone and the dash cam. Try restarting both devices.
- **Recording Problems:** Format the MicroSD card. If issues persist, try a different compatible MicroSD card.
- **Parking Mode Notifications:** Verify that the dash cam is properly hardwired or connected via an OBD-II cable for continuous power in parking mode. Check app settings for notification preferences.
- **Video Quality:** Ensure the lens is clean and free from smudges. Check resolution settings in the app.

8. SPECIFICATIONS

Product Dimensions	5.5 x 7.48 x 3.86 inches
Item Weight	4.6 ounces
Model Name	THINKWARE U3000
Item Model Number	TW-U3000MU64C
Video Capture Resolution	4K UHD (3840 × 2160)
Connectivity Technology	Wired, Wireless (Wi-Fi, Bluetooth)
Special Features	RADAR Parking Mode, Smart Parking Mode, Super Night Vision, GPS, Speed Camera Alerts
Mounting Type	Windshield Mount

9. OFFICIAL PRODUCT VIDEO

Watch the official product video for a comprehensive overview of the THINKWARE U3000 Dash Cam's features and

capabilities.

Official product video showcasing the THINKWARE U3000 Dash Cam's features, including 4K recording, Super Night Vision, Radar Parking Mode, and app connectivity.

10. WARRANTY AND SUPPORT

Your THINKWARE U3000 Dash Cam comes with a manufacturer's warranty. For detailed warranty information, product support, or to download the latest firmware and user manuals, please refer to the QR code included in your package or visit the official THINKWARE website. Ensure you register your product for warranty purposes.