

## Denver PFF1042LW

# Denver PFF1042LW Digital Photo Frame User Manual

Model: PFF1042LW

## 1. INTRODUCTION

---

This manual provides comprehensive instructions for the setup, operation, and maintenance of your Denver PFF1042LW Digital Photo Frame. This 10.1-inch HD electronic photo frame features an IPS touch screen, 16 GB of internal storage, and integrates with the Frameo app for easy photo and video sharing. Please read this manual thoroughly before using your device to ensure proper functionality and longevity.

## 2. PACKAGE CONTENTS

---

Please verify that all items are present in the package:

- Denver PFF1042LW Digital Photo Frame
- Power Adapter
- Frame Stand
- Quick Start Guide (if included)

## 3. PRODUCT OVERVIEW

---

### 3.1 Front View



**Image:** The Denver PFF1042LW Digital Photo Frame, featuring a 10.1-inch HD touch screen set in a wooden frame, displaying a photo of a woman and a child. A smartphone next to it shows the Frameo app, indicating connectivity and sharing capabilities.

### 3.2 Rear/Side View (General)

While specific images of the rear/side ports are not provided, typical digital photo frames include:

- **Power Port:** For connecting the power adapter.
- **Micro SD Card Slot:** For expanding storage or transferring media.
- **USB Port (if available):** For connecting USB drives or other peripherals.
- **Reset Button:** A small pinhole button for factory reset.

## 4. SETUP

### 4.1 Powering On

1. Connect the provided power adapter to the power port on the back of the frame.
2. Plug the power adapter into a wall outlet.
3. The frame will automatically power on and display the initial setup screen.

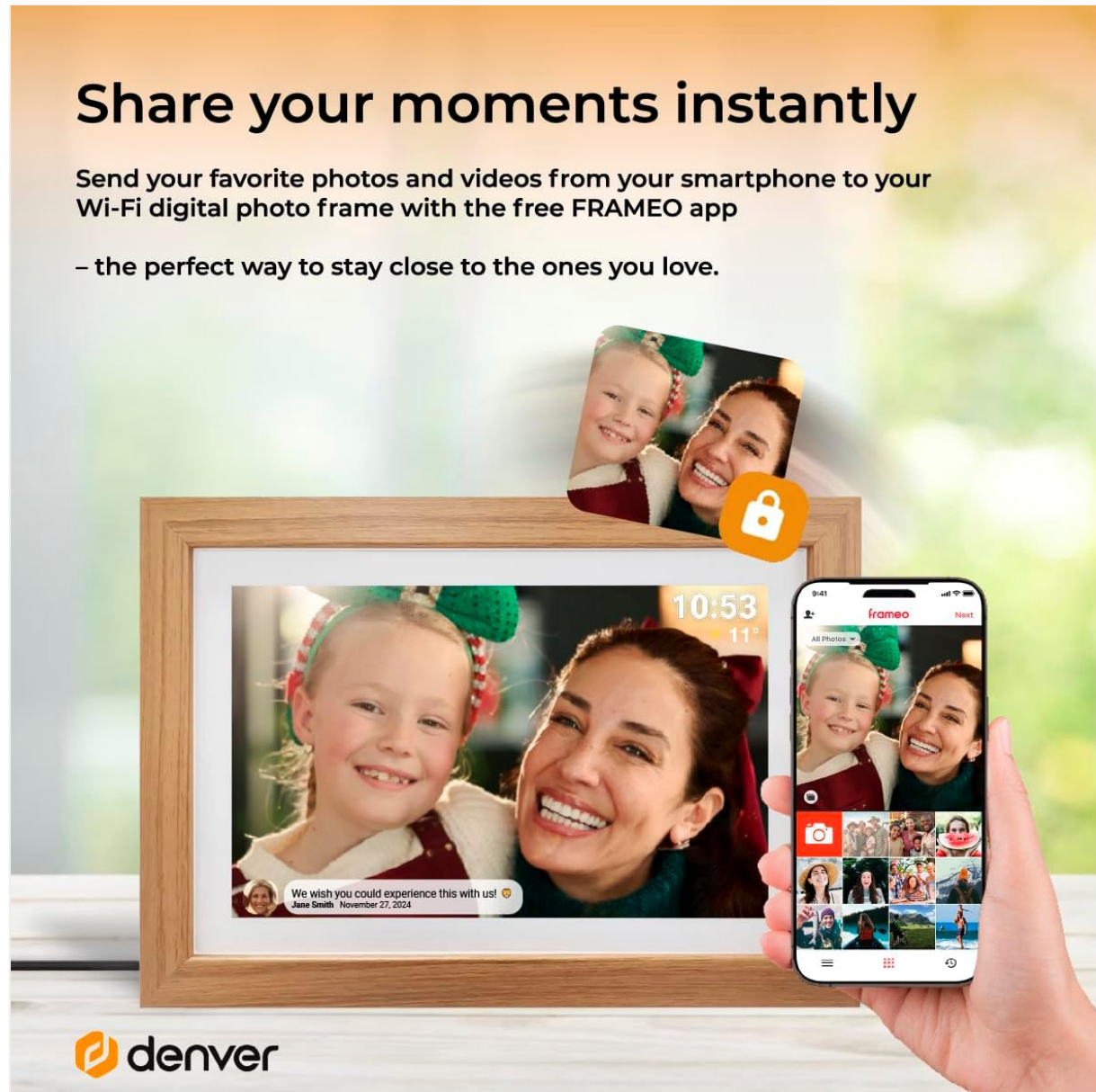
### 4.2 Network Connection

To enable photo sharing via the Frameo app, the frame must be connected to a Wi-Fi network.

1. On the initial setup screen, select your preferred language.
2. Choose your Wi-Fi network from the list of available networks.
3. Enter the Wi-Fi password using the on-screen keyboard.
4. Confirm the connection. The frame will indicate when it is successfully connected to the internet.

### 4.3 Frameo App Installation and Pairing

The Frameo app is essential for sending photos and videos to your digital frame.



**Image:** The Frameo app on a smartphone, ready to send photos and videos to the digital photo frame, emphasizing instant sharing and a secure connection.

1. Download the free Frameo app from the App Store (for iOS devices) or Google Play Store (for Android devices) on your smartphone or tablet.
2. Open the Frameo app and create an account or log in.
3. On your digital photo frame, follow the on-screen instructions to generate a unique code.
4. In the Frameo app, enter this code to pair your smartphone with the digital photo frame. This establishes a secure connection for sharing.

## 5. OPERATING THE FRAME

## 5.1 Sending Photos and Videos

Once paired, you can send media to your frame from anywhere in the world.

**Image:** This image demonstrates the multi-user connection feature, where several individuals can send photos and videos from their smartphones to the same digital photo frame, fostering shared memories.

1. Open the Frameo app on your smartphone.
2. Select the photos or short video clips you wish to send.
3. Choose your connected digital photo frame as the recipient.
4. The media will be transferred to the frame via Wi-Fi and appear in the slideshow.

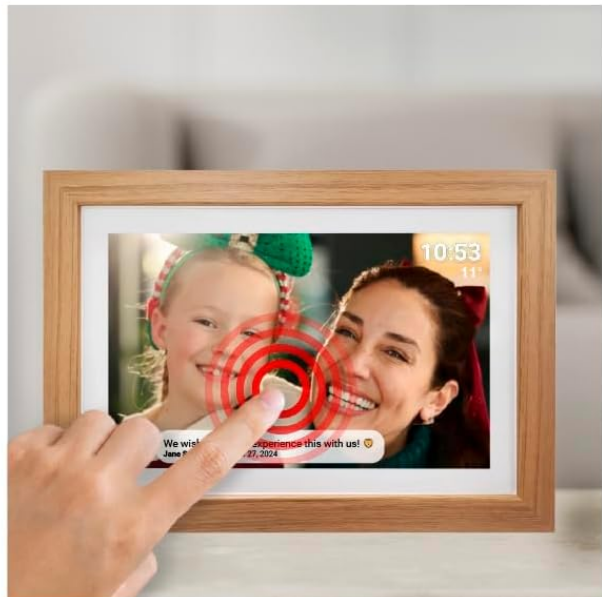
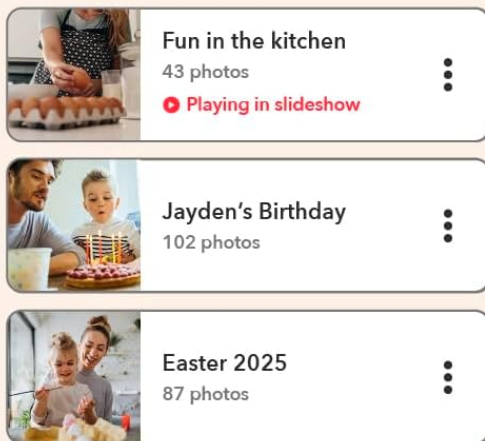
## 5.2 Viewing Media and Navigation

The frame automatically displays photos and videos in a continuous slideshow. You can interact with the content using the touch screen.





**Create albums  
on your frame,  
and show off your  
favorite moments**

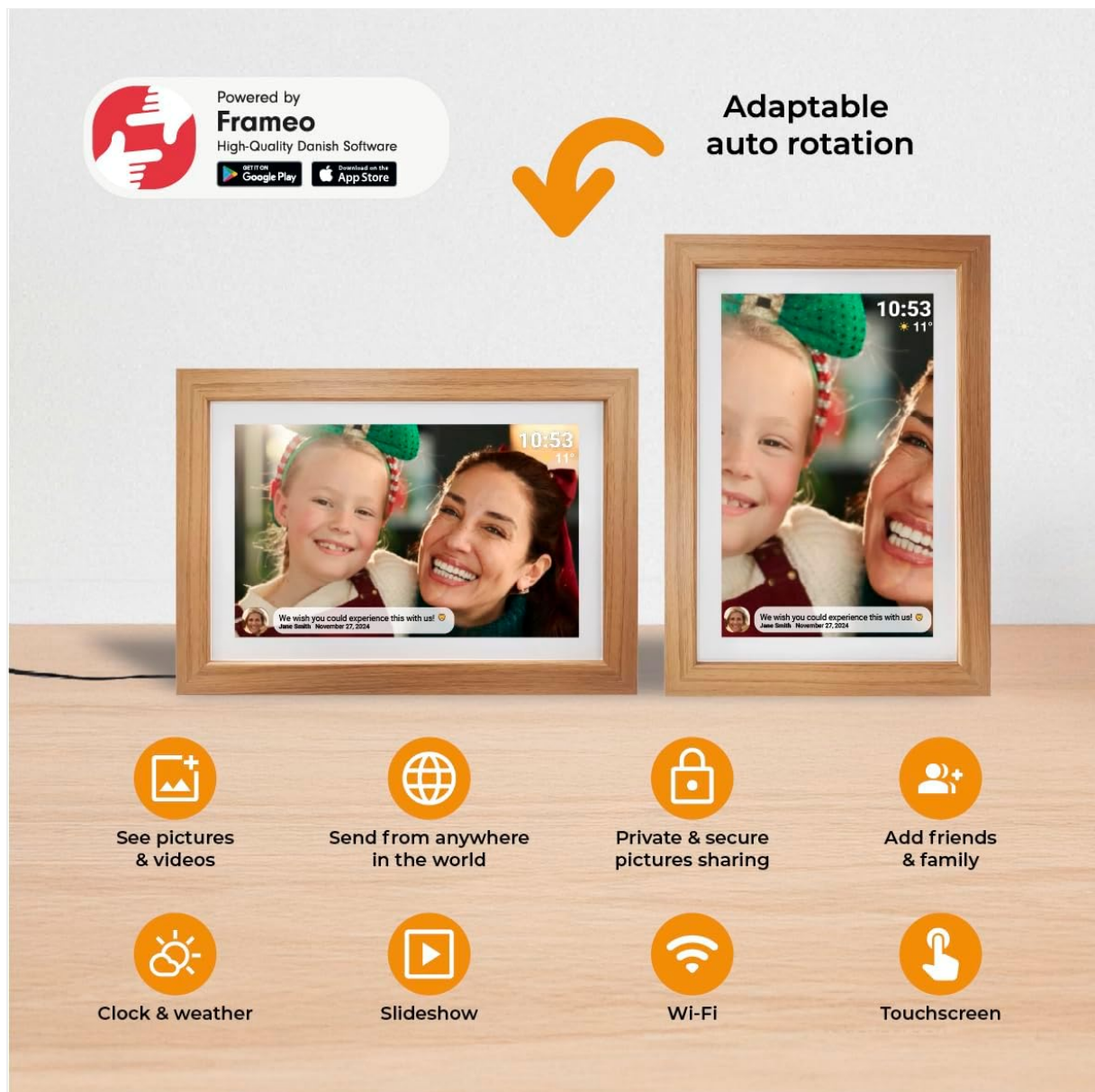


**Image:** A user's hand touches the digital photo frame's screen, which displays a family photo. The image also shows examples of organized albums like 'Fun in the kitchen' and 'Jayden's Birthday', indicating the ability to create and manage photo collections directly on the frame.

- **Swipe:** Swipe left or right on the screen to manually navigate through photos.
- **Tap:** Tap the screen to reveal options such as pausing the slideshow, accessing settings, or viewing photo details.
- **Albums:** Organize your photos into albums directly on the frame for easier management.

## 5.3 Automatic Rotation

The frame features an automatic rotation function, allowing it to be placed in either landscape or portrait orientation.



**Image:** This visual illustrates the frame's adaptable auto-rotation capability, showing the same digital photo frame displaying an image correctly oriented in both horizontal and vertical positions. This ensures optimal viewing regardless of how the frame is placed.

The display will automatically adjust the orientation of your photos to match the frame's position.

## 5.4 Storage Management

The Denver PFF1042LW comes with 16GB of built-in memory.

# 16GB Built-in Memory



Save thousands of photos directly on the frame



Send 10 pictures & 15 second video clips at once



Add micro SD card to load more pictures and longer videos



**Image:** This graphic highlights the frame's 16GB built-in memory, indicating it can store thousands of photos. It also shows the capability to send 10 pictures and 15-second video clips at once, and the option to add a Micro SD card for additional storage.

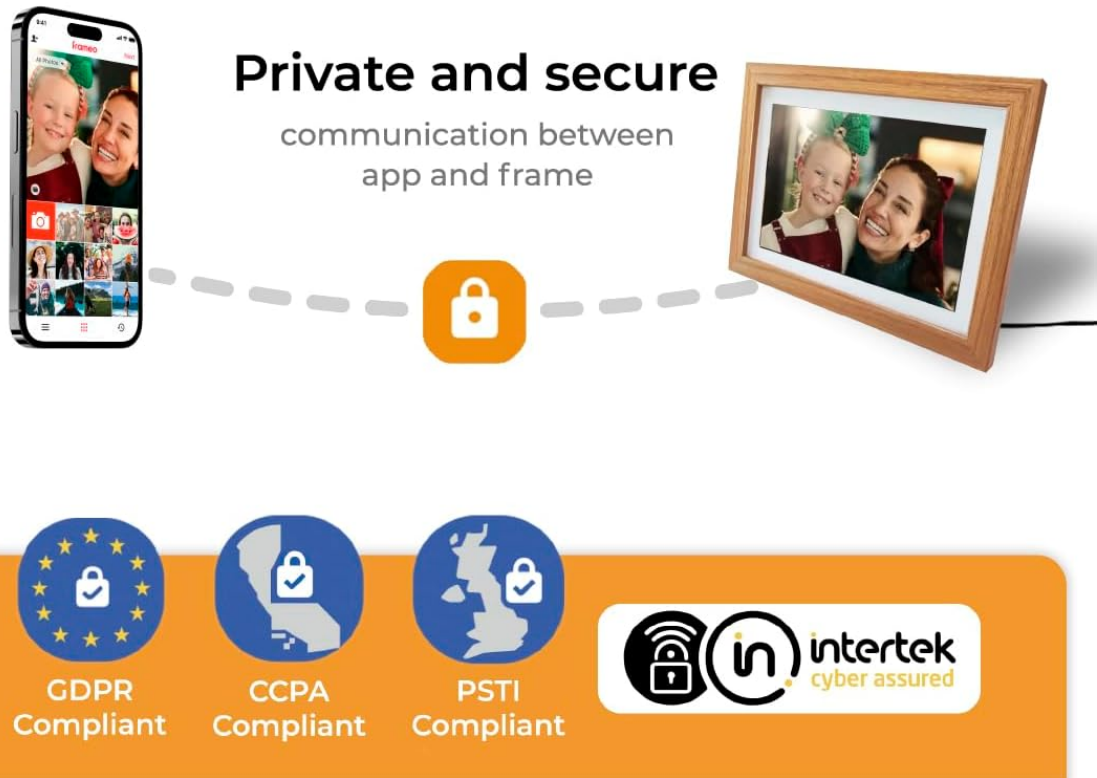
- **Internal Storage:** The 16GB internal memory is sufficient for thousands of photos and numerous short video clips.
- **Micro SD Card:** Insert a Micro SD card into the designated slot to expand storage capacity or to transfer media directly to the frame.

## 5.5 Privacy and Security

The Frameo app and your digital photo frame are designed with privacy and security in mind.



# Your **frame** – designed to protect your privacy with the free **Frameo** app



**Image:** This illustration depicts the secure and private communication pathway between a user's smartphone running the Frameo app and the digital photo frame. It highlights compliance with data protection regulations such as GDPR, CCPA, and PSTI, and features an 'Intertek Cyber Assured' badge, ensuring data privacy.

All communication between the app and the frame is encrypted and secure, adhering to privacy standards such as GDPR, CCPA, and PSTI.

## 6. MAINTENANCE

---

### 6.1 Cleaning the Frame

- **Screen:** Gently wipe the screen with a soft, lint-free cloth. For stubborn smudges, slightly dampen the cloth with water or a screen-cleaning solution. Avoid harsh chemicals.
- **Frame:** Wipe the wooden frame with a dry or slightly damp cloth. Do not use abrasive cleaners or excessive moisture.

### 6.2 Software Updates

The Frameo software is continuously updated to improve features and performance. Ensure your frame is connected to Wi-Fi to receive automatic updates.





**Image:** This image highlights key aspects of the Frameo ecosystem, including its top-rated software, dedicated support team, its suitability as a gift, and the commitment to continuous software updates, shown with a digital photo frame displaying a 'Downloading update...' message.

## 7. TROUBLESHOOTING

### 7.1 Common Issues and Solutions

- **Frame not powering on:**  
Ensure the power adapter is securely connected to both the frame and a working power outlet. Try a different outlet if necessary.
- **Cannot connect to Wi-Fi:**  
Verify your Wi-Fi password is correct. Ensure the frame is within range of your Wi-Fi router. Restart your router and the photo frame.
- **Photos not appearing on the frame:**  
Check if the frame is connected to Wi-Fi. Ensure the Frameo app on your smartphone is connected to the correct frame. Verify that photos were successfully sent from the app.
- **Touch screen unresponsive:**  
Restart the frame by unplugging and re-plugging the power adapter. If the issue persists, perform a factory reset (refer to the quick start guide for instructions on locating the reset button).

- **Frame is slow or freezing:**

Ensure the frame's software is up to date. If many photos/videos are stored, consider deleting older content or transferring them to a Micro SD card. Restarting the frame can also resolve temporary slowdowns.

## 8. SPECIFICATIONS

Model Number	119101040330 (PFF1042LW)
Screen Size	10.1 Inches
Resolution	1280x800 (HD IPS Touch Screen)
Aspect Ratio	16:10
Internal Storage	16 GB
Connectivity	Wi-Fi
Compatible Devices	Smartphone (via Frameo App)
Human Interface Input	Touchscreen
Power Source	Corded Electric
Frame Material	Wood
Product Dimensions	2.5 x 33.2 x 2.51 cm
Item Weight	770 g

## 9. WARRANTY AND SUPPORT

For warranty information and technical support, please refer to the documentation included with your product or visit the official Denver website. Keep your proof of purchase for warranty claims.

### Related Documents - PFF1042LW








PFF-725W

denver.eu



#### [Denver PFF-725W Digital Photo Frame User Manual](#)

Comprehensive user manual for the Denver PFF-725W digital photo frame, covering setup, operation, features, settings, troubleshooting, and support.

 <p>DENVER®</p> <p>USER MANUAL PFF-1513BLACK</p> <p>Before connecting, operating or adjusting this product, please read this user's manual carefully and thoroughly.</p> <p>ENGLISH</p>	<p><a href="#">DENVER PFF-1513BLACK Digital Photo Frame User Manual</a></p> <p>Comprehensive user manual for the DENVER PFF-1513BLACK digital photo frame. Learn how to set up, connect, manage photos, use settings, and find support information.</p>
 <p>denver</p> <p>PFF-1016 denver.eu</p> <p>ENGLISH</p>	<p><a href="#">Denver PFF-1016 Frameo Digital Photo Frame User Manual</a></p> <p>This user manual provides comprehensive instructions for setting up and using the Denver PFF-1016 Frameo digital photo frame, including safety information, feature guides, and troubleshooting.</p>
 <p>DENVER®</p> <p>USER MANUAL PFF-1010BLACK</p> <p>Before connecting, operating or adjusting this product, please read this user's manual carefully and thoroughly.</p> <p>ENGLISH</p>	<p><a href="#">Denver PFF-1010BLACK Digital Photo Frame User Manual</a></p> <p>Comprehensive user manual for the Denver PFF-1010BLACK digital photo frame, covering setup, frameo app usage, photo management, device settings, and important safety information.</p>
 <p>denver</p> <p>PFF-1015B denver.eu</p> <p>ENGLISH</p>	<p><a href="#">Denver PFF-1015B Frameo Digital Photo Frame User Manual</a></p> <p>Comprehensive user manual for the Denver PFF-1015B Frameo digital photo frame, covering setup, operation, settings, safety information, and support.</p>
 <p>denver</p> <p>USER MANUAL PFF-3251</p> <p>Before connecting, operating or adjusting this product, please read this user's manual carefully and thoroughly.</p> <p>ENGLISH</p>	<p><a href="#">Denver PFF-3251 Frameo Digital Photo Frame User Manual - Setup, Features, and Safety Guide</a></p> <p>Comprehensive user manual for the Denver PFF-3251 Frameo digital photo frame. Learn how to set up, connect friends, manage photos, use Wi-Fi, and understand safety instructions. Includes technical specifications and support information.</p>