

SMALLRIG 4023-AU

SmallRig Camera Cage Instruction Manual

Model: 4023-AU

Brand: SMALLRIG

INTRODUCTION

This instruction manual provides detailed information on the installation, operation, and maintenance of your SmallRig Camera Cage, Model 4023-AU. This cage is specifically designed for Panasonic LUMIX G9 II, S5 II, and S5 IIX cameras, offering enhanced protection and multiple mounting points for various accessories.

PRODUCT OVERVIEW

The SmallRig Camera Cage 4023-AU features a "Black Mamba" bionic design, ensuring full access to all camera controls while providing robust protection. It integrates a quick-release plate for Arca-Swiss compatibility and offers extensive expansion capabilities.

Key Features:

- **Streamlined Design:** The all-in-one form-fitting design ensures full access to all top controls and buttons of the camera.
- **Quick Switch for Arca-Swiss:** Features a built-in quick-release plate at the bottom, compatible with DJI RS 2 / RSC 2 / RS 3 / RS 3 Pro gimbals and Arca-Swiss tripods. Includes a threaded hole for quick-release plate (riser pad) of RS 2 / RSC 2 and Arca-Type Quick Release Plate [3154].
- **Anti-Twist Mechanism:** Secures the camera via one bottom 1/4"-20 screw and two side lock adapters, complemented by rubber pads to prevent scratches and ensure stability.
- **Multiple Mounting Points:** Equipped with various attachment points including 1/4"-20 holes, a front 1/4"-20 locating hole for rod clamps (e.g., 3276), a 3/8"-16 locating hole for ARRI accessories (e.g., Top Handle 3765, Monitor Mount 2903B), a built-in left NATO rail for side handles (e.g., 3847), integrated cold shoe mounts for microphones or LED lights, and a bottom QD socket for shoulder straps.
- **Integrated Tools:** Includes a magnetic wrench for convenient disassembly and assembly, always accessible within the cage structure.
- **Strap Compatibility:** Features strap holes on both sides and the bottom, compatible with various hand straps (e.g., 3848) and shoulder straps (e.g., PSC2428).



Image: The SmallRig Camera Cage 4023-AU, showcasing its sleek design and how it integrates with a camera body.

SETUP AND INSTALLATION

Follow these steps to properly install the SmallRig Camera Cage onto your Panasonic LUMIX G9 II, S5 II, or S5 IIX camera.

1. Step 1: Prepare the Cage

Remove the two side lock adapters from the cage. These are typically secured with screws that can be loosened using the included dual-head wrench.

Multiple Mounting Points

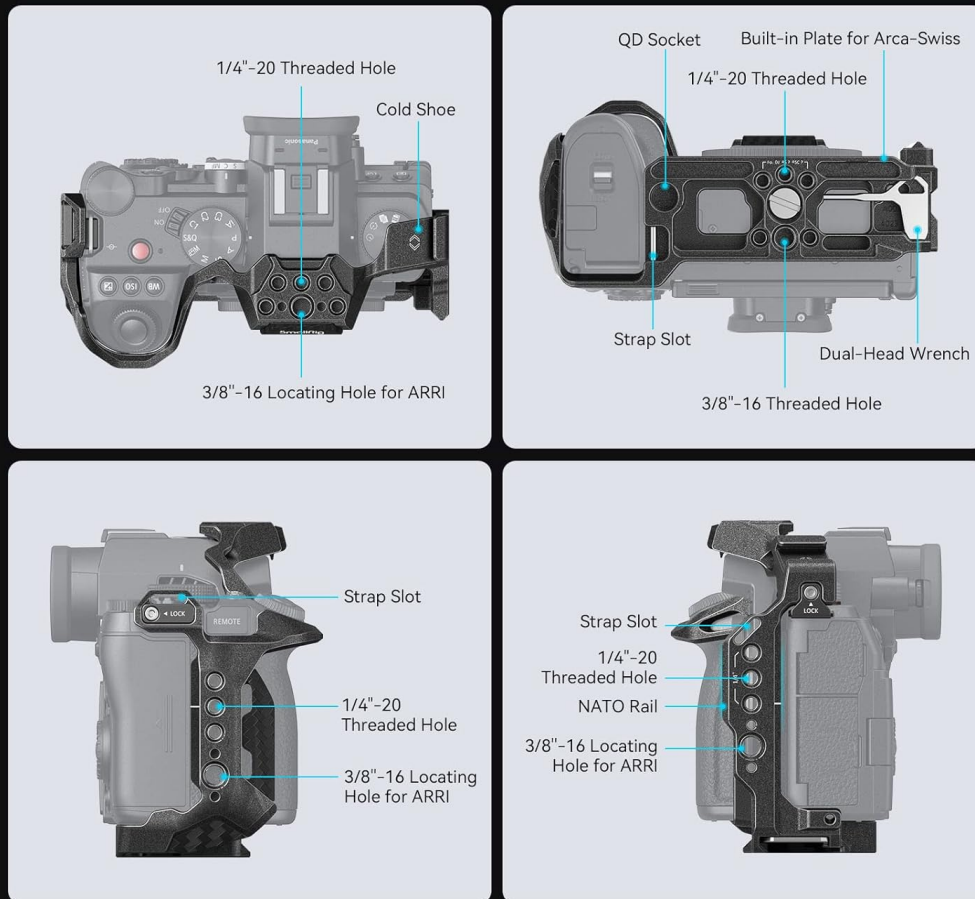


Image: Illustration of removing the side lock adapters from the cage.

2. Step 2: Insert the Camera

Carefully slide your Panasonic LUMIX G9 II, S5 II, or S5 IIX camera into the cage. Ensure it is aligned correctly, typically from the back to the front of the cage.

Multiple Mounting Points

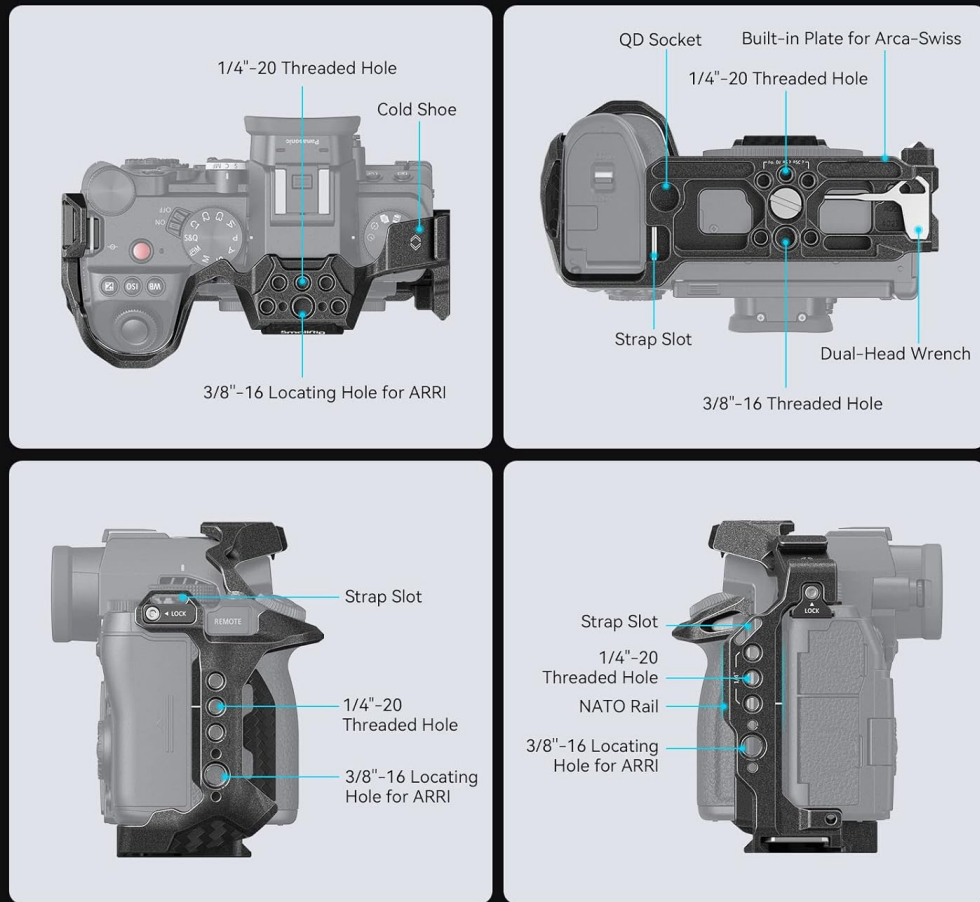


Image: Illustration of inserting the camera into the cage body.

3. Step 3: Secure the Bottom Screw

Locate the 1/4"-20 screw at the bottom of the cage. Tighten this screw into the camera's tripod mount to secure the camera firmly to the cage. Use the magnetic wrench for this step.

Multiple Mounting Points

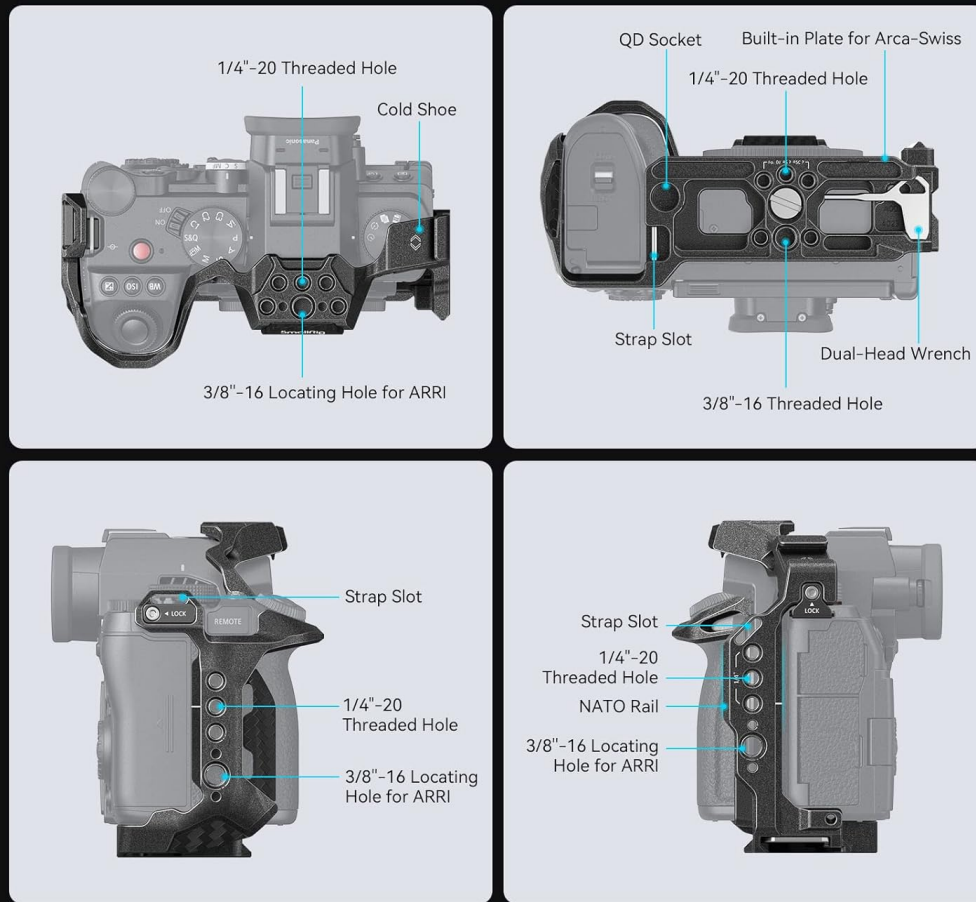


Image: Illustration of tightening the bottom screw to secure the camera.

4. Step 4: Tighten Side Lock Adapters

Re-attach and tighten the side lock adapters on each side of the cage. These adapters engage with the camera's strap slots, providing additional anti-twist security and preventing the camera from rotating within the cage.

Multiple Mounting Points

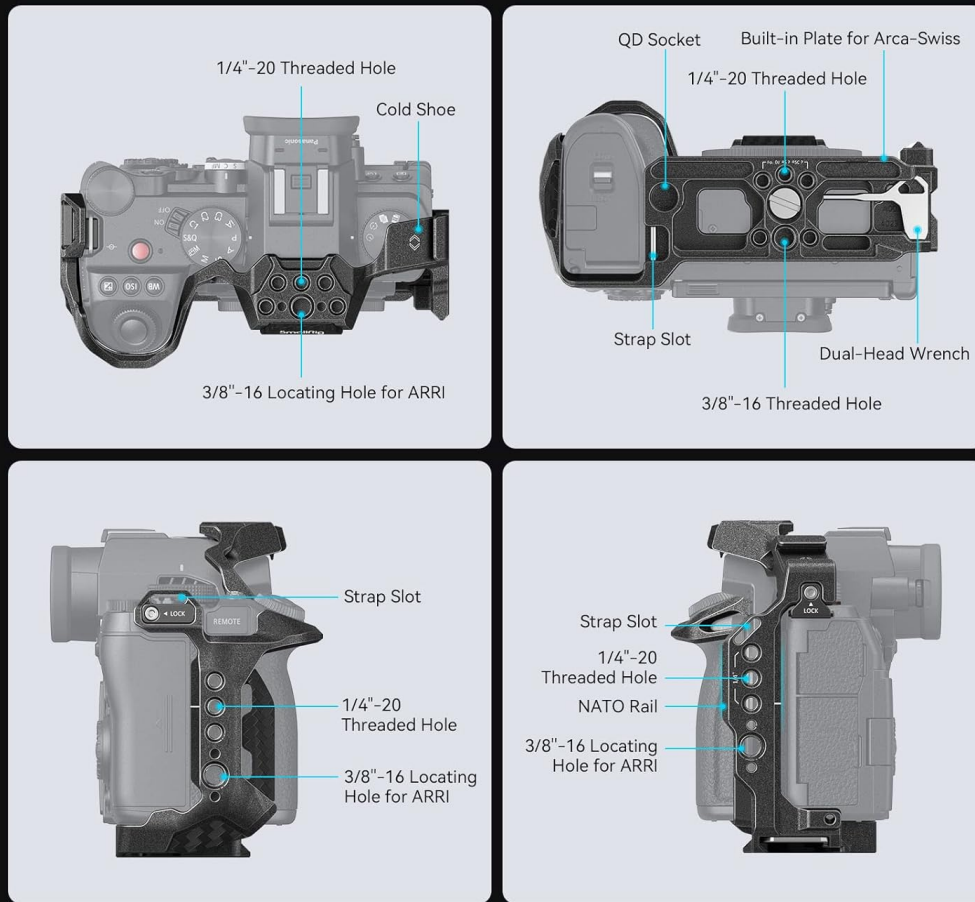


Image: Illustration of securing the side lock adapters.

OPERATING AND USAGE

The SmallRig Camera Cage 4023-AU is designed to enhance your camera's functionality and versatility. Here's how to utilize its features:

Access to Camera Controls:

The cage's design ensures that all camera buttons, dials, and ports remain fully accessible. This includes the battery compartment, memory card slot, and various control buttons on the top and sides of the camera.

Ergonomic Design, Enhanced Control

The ergonomic design provides improved grip, control and comfort for handheld shooting



Image: Top-down view illustrating the streamlined design that allows full access to camera controls and buttons.

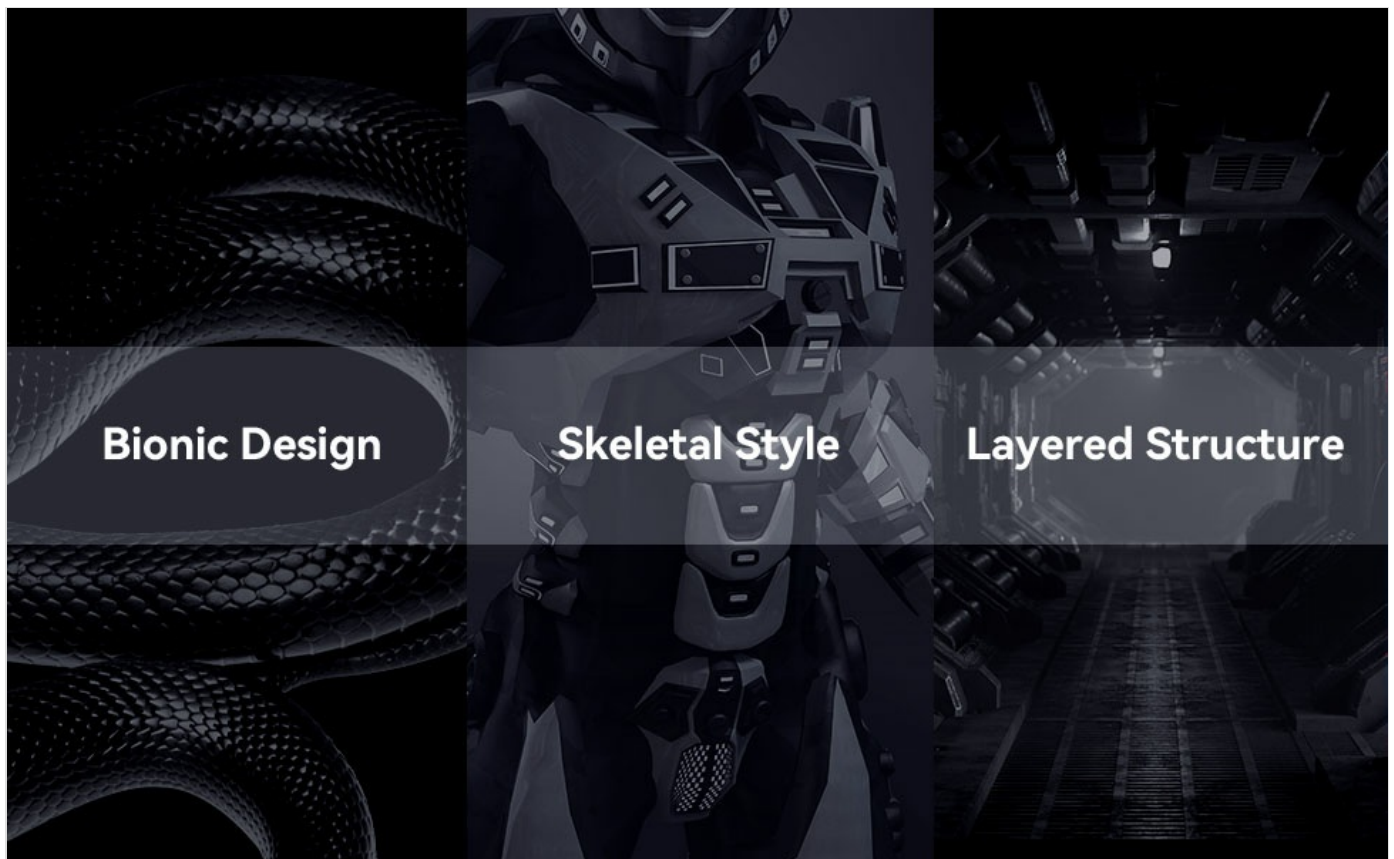


Image: Bottom view of the cage, highlighting full access to the battery compartment and the integrated magnetic wrench.

Attaching Accessories:

Utilize the various mounting points to attach external accessories such as monitors, microphones, LED lights, and handles.

- **1/4"-20 and 3/8"-16 Threaded Holes:** For attaching articulating arms, monitor mounts, top handles, and other threaded accessories.
- **Cold Shoe Mounts:** Ideal for attaching microphones, small LED lights, or wireless receivers.
- **NATO Rail:** Provides quick attachment and detachment for NATO-compatible accessories like side handles.
- **QD Socket:** For quick attachment of QD (Quick Detach) shoulder straps.

Scene Switching in One Easy Step

The built-in Quick Release Plate for Arca-Swiss Allows Quick Switching from Tripod to Stabilizer

* Compatible for DJI RS3 Pro / RS 3 / RS 2 / RSC 2



Image: A camera mounted in the SmallRig cage, demonstrating the use of various mounting points for a cold shoe mount, QD socket, quick release plate, NATO rail, 3/8"-16 locating hole for ARRI, wrist strap slot, and 1/4"-20 threaded hole.

Package Includes

Cage × 1



Specifications

Brand	SmallRig
ID	4023
Net Weight	157 ± 5g
Compatibility	For Panasonic S5 II, For Panasonic S5 IIX
Product Dimensions	147.5 × 72.8 × 117.5mm
Package Dimensions	175.0 × 143.0 × 83.0mm

Image: Detailed diagram illustrating the location and type of multiple mounting points on the SmallRig cage, including 1/4"-20 threaded holes, cold shoe mounts, 3/8"-16 locating holes for ARRI, QD sockets, built-in Arca-Swiss plate, NATO rail, strap slots, and the dual-head wrench storage.

Quick Switching Between Setups:

The integrated Arca-Swiss quick-release plate allows for rapid transitions between tripods, gimbals, and handheld setups without removing the camera from the cage.

Installation Steps

STEP 1



Remove the two side lock adapters on the cage with an included dual-head wrench.

STEP 2



Put the camera into the cage from back to the front.

STEP 3



Secure the cage via tightening the 1/4"-20 screw.

STEP 4



Secure the cage and camera strap slots via tightening the side lock adapter on each side.

Image: Illustration demonstrating the quick and easy scene switching capability, allowing the camera with the cage to transition from a tripod to a stabilizer (compatible with DJI RS3 Pro / RS 3 / RS 2 / RSC 2) in one step.

MAINTENANCE

Proper maintenance will ensure the longevity and optimal performance of your SmallRig Camera Cage.

- **Cleaning:** Wipe the cage with a soft, dry cloth to remove dust and fingerprints. For stubborn dirt, a slightly damp cloth can be used, followed by immediate drying. Avoid abrasive cleaners or solvents.
- **Storage:** Store the cage in a dry, cool place away from direct sunlight and extreme temperatures. If storing for extended periods, ensure it is clean and free of moisture.
- **Screw Tightness:** Periodically check all screws, especially the main camera attachment screw and side lock adapters, to ensure they remain tight. The integrated magnetic wrench can be used for this purpose.

TROUBLESHOOTING

This section addresses common issues you might encounter with your SmallRig Camera Cage.

Problem	Possible Cause	Solution
Cage does not fit camera properly.	Incorrect camera model or improper installation.	Ensure your camera is a Panasonic LUMIX G9 II, S5 II, or S5 IIX. Re-check installation steps, especially the alignment and tightening of the bottom screw and side lock adapters.
Camera feels loose inside the cage.	Bottom screw or side lock adapters are not sufficiently tightened.	Tighten the 1/4"-20 bottom screw and both side lock adapters firmly using the integrated magnetic wrench. Ensure rubber pads are in place.
Accessories do not attach securely to mounting points.	Incorrect accessory type or damaged threads.	Verify that the accessory's screw type matches the cage's mounting point (e.g., 1/4"-20, 3/8"-16, NATO). Inspect threads for damage. Do not overtighten.
HDMI/USB cable holder is missing.	This specific model (4023-AU) does not include an integrated HDMI/USB cable holder.	An external cable clamp accessory may be purchased separately if needed. Refer to SmallRig's official website for compatible accessories.

SPECIFICATIONS



Image: A visual representation of the product specifications and package contents.

Attribute	Detail
Brand	SMALLRIG
Model Number	4023-AU

Attribute	Detail
Compatibility	Panasonic LUMIX G9 II, S5 II, S5 IIX
Product Dimensions (L x W x H)	5.91 x 2.76 x 4.33 inches (147.5 x 72.8 x 117.5mm)
Item Weight	5.5 ounces (157 Grams)
Material	Aluminum Alloy
Color	Black
Mounting Points	1/4"-20, 3/8"-16 ARRI, Cold Shoe, NATO Rail, QD Socket
Quick Release System	Built-in Arca-Swiss Plate

WHAT'S IN THE BOX

- 1 x SmallRig Camera Cage (Model 4023-AU)

Note: Additional accessories shown in product images (e.g., camera, lens, monitor, microphone, handles) are for demonstration purposes only and are not included unless specified.

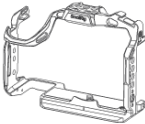
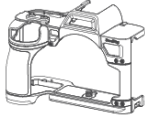
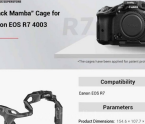
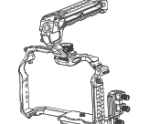
WARRANTY AND SUPPORT

For information regarding product warranty, technical support, or service, please refer to the official SmallRig website or contact their customer service directly. Specific warranty terms and conditions may vary by region and purchase location. Official SmallRig Website: www.smallrig.com

OFFICIAL PRODUCT VIDEOS

Based on the provided product data, no official product videos from the seller are available for embedding in this manual. Please refer to the manufacturer's official channels for any available video content.

Related Documents

<div data-bbox="116 91 309 362"><p>SmallRig</p><p>"Black Mamba" Cage (for Panasonic GH9 / S5 II / S5 IIX / S1R II / S1 II) 「黑曼巴」鋁籠 (適用於 GH9 / S5 II / S5 IIX / S1R II / S1 II) Operating Instruction (操作說明)</p></div>	<p>SmallRig Black Mamba Cage Operating Instructions and Specifications</p> <p>Comprehensive guide for the SmallRig 'Black Mamba' Cage (models 5502 and 5503), detailing installation, features, specifications, and warranty for Panasonic G9 II, S5 II, S5 IIX, S1R II, S1 II, and S1 IIE cameras.</p>
<div data-bbox="116 562 309 833"><p>SmallRig</p><p>Case for Sony Alpha 7 IV 保護壳 (適用於索尼Alpha 7 IV) Operating Instruction (操作說明)</p></div>	<p>SmallRig Case for Sony Alpha 7 IV Operating Instruction</p> <p>This document provides operating instructions and installation guidance for the SmallRig camera cage designed for the Sony Alpha 7 IV. It details the package contents, product features, step-by-step installation procedures, and technical specifications.</p>
<div data-bbox="116 875 309 1146"><p>SmallRig</p><p>"Black Mamba" Cage for Canon EOS R7 4003</p><p>Compatibility: Canon EOS R7</p><p>Parameters:</p><p>Product Dimensions: 104 x 92 x 71 mm</p><p>Package Dimensions: 122 x 120 x 65 mm</p><p>Net Weight: 100g (3.5oz)</p><p>Package Weight: 120g (4.2oz)</p><p>Package Size: 100x92x71mm</p><p>Not Locked with Only the Camera Lens Mount</p><p>Not Locked with Other Lens Mounts</p><p>Not Locked with Other Lens Mounts</p></div>	<p>SmallRig "Black Mamba" Cage for Canon EOS R7 (4003) - Enhanced Protection & Rigging</p> <p>Discover the SmallRig "Black Mamba" Cage (4003) designed for the Canon EOS R7. This aluminum alloy cage offers full access to buttons, multiple mounting points, and a triple anti-twist locking design for enhanced stability and accessory attachment.</p>
<div data-bbox="116 1413 309 1684"><p>SmallRig</p><p>HawkLock Quick Release Cage Kit for Panasonic LUMIX GH7 / GH6 LUMIX GH7 / GH6 鋁籠快速安裝組 Operating Instruction (操作說明)</p></div>	<p>SmallRig HawkLock Quick Release Cage Kit for Panasonic LUMIX GH7/GH6 Operating Instructions</p> <p>Operating instructions for the SmallRig HawkLock Quick Release Cage Kit, designed for Panasonic LUMIX GH7 and GH6 cameras. Includes specifications, product details, and installation steps for the cage and top handle.</p>