

Uaoaii IW800

Uaoaii IW800 Cordless Impact Wrench User Manual

Model: IW800 | Brand: Uaoaii

1. INTRODUCTION

Thank you for choosing the Uaoaii IW800 Cordless Impact Wrench. This manual provides essential information for the safe operation, maintenance, and troubleshooting of your new tool. Please read this manual thoroughly before use and retain it for future reference.

The Uaoaii IW800 is a high-performance 1/2-inch cordless impact wrench designed for heavy-duty applications such as automotive repair, construction, and machinery maintenance. It features a powerful brushless motor, variable speed control, and a maximum torque of 1000 N.m (738 ft-lbs).

2. GENERAL SAFETY WARNINGS

WARNING: Read all safety warnings, instructions, illustrations, and specifications provided with this power tool. Failure to follow all instructions listed below may result in electric shock, fire, and/or serious injury.

- **Work Area Safety:** Keep work area clean and well-lit. Cluttered or dark areas invite accidents. Do not operate power tools in explosive atmospheres, such as in the presence of flammable liquids, gases, or dust.
- **Electrical Safety:** Power tool plugs must match the outlet. Never modify the plug in any way. Do not use any adapter plugs with earthed (grounded) power tools. Avoid body contact with earthed or grounded surfaces such as pipes, radiators, ranges, and refrigerators.
- **Personal Safety:** Stay alert, watch what you are doing, and use common sense when operating a power tool. Do not use a power tool while you are tired or under the influence of drugs, alcohol, or medication. Always wear eye protection.
- **Tool Use and Care:** Do not force the power tool. Use the correct power tool for your application. Disconnect the battery pack from the power tool before making any adjustments, changing accessories, or storing power tools.



Image: A page from the physical instruction manual, detailing general safety warnings for power tools.

3. PACKAGE CONTENTS

The Uaoaii IW800 Cordless Impact Wrench kit includes the following items:

- 1 x Uaoaii IW800 Cordless Impact Wrench (738ft-lbs/1000N.m)
- 2 x 4.0Ah Lithium-Ion Batteries
- 1 x Desktop Fast Charger (AC 110V-220V)
- 5 x Cr-V Steel Sockets (17mm, 19mm, 21mm, 22mm, 24mm)
- 1 x 5-inch Socket Extension Bar
- 1 x Sturdy Carrying Case



Image: The complete Uaoai IW800 kit, showing the impact wrench, two 4.0Ah batteries, a fast charger, five impact sockets, an extension bar, and a storage case.

4. PRODUCT COMPONENTS

Familiarize yourself with the key components of your Uaoai IW800 impact wrench:

- **1/2-inch Square Drive Anvil:** For attaching impact sockets.
- **Brushless Motor:** Provides efficient power and longer tool life.
- **Variable Speed Trigger:** Allows precise control over speed and torque.
- **3-Speed Control Panel:** Select between Low, Mid, and High RPM settings.
- **Forward/Reverse Switch:** Changes the direction of rotation.
- **LED Work Light:** Illuminates the work area.
- **Battery Pack:** Rechargeable 21V Lithium-Ion battery.
- **Battery Release Button:** For detaching the battery.

HIGH PERFORMANCE **BRUSHLESS MOTOR**

60%
Power

80%
Life time

80%
Sparks

60%
Noise



Image: An illustration showing the internal brushless motor of the impact wrench, emphasizing its high performance, longer life, reduced sparks, and lower noise.

COMPACT SIZE

30%



MORE COMPACT

More than 30% more compact than similar high torque wrenches



Image: The Uaoaii IW800 impact wrench shown in a compact form factor, indicating it is more than 30% more compact than similar high-torque wrenches.

5. SETUP

5.1. Charging the Battery

1. Connect the fast charger to a standard AC power outlet (110V-220V).
2. Slide the battery pack onto the charger until it clicks into place.
3. The charger's indicator light will show the charging status. A full charge typically takes approximately 2 hours.
4. Once fully charged, remove the battery from the charger.

LONGER RUN TIME large-capacity
Li-ion battery

**2 x 4.0AH
BATTERIES**



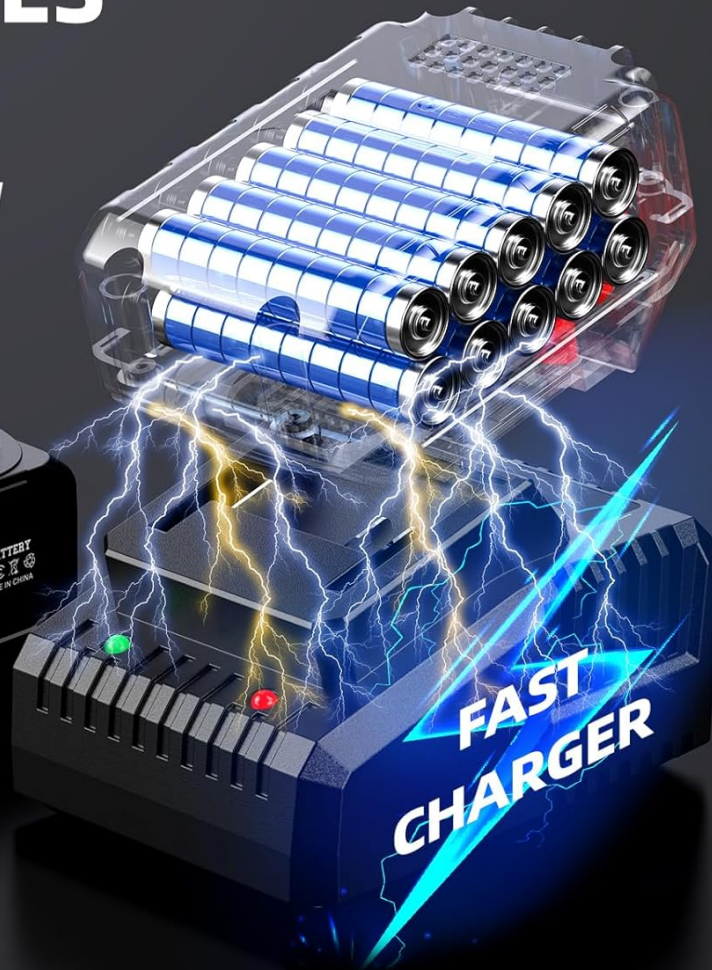
OVER-HEAT PROTECTION



OVER-VOLTAGE PROTECTION



OVER-CHARGE PROTECTION



● Charging

● Fully charged

Image: Two 4.0Ah Lithium-Ion batteries and the fast charger. The image illustrates the charging process with indicators for 'Charging' (red) and 'Fully charged' (green), along with over-heat, over-voltage, and over-charge protection features.

5.2. Attaching/Removing Sockets

1. To attach a socket, align the square opening of the impact socket with the 1/2-inch square drive anvil on the wrench.
2. Push the socket firmly onto the anvil until it locks into place. Ensure it is securely seated.
3. To remove a socket, pull it off the anvil while pressing the detent pin (if applicable) or simply pull firmly.

5X1/2 INCH IMPACT SOCKET SET

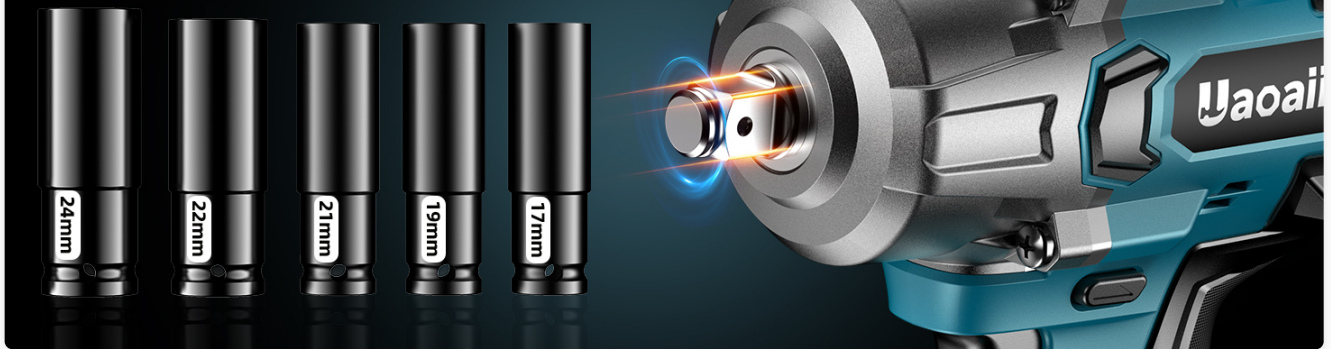


Image: A detailed view of the 1/2-inch square drive anvil on the impact wrench, alongside a set of five Cr-V steel impact sockets (17mm, 19mm, 21mm, 22mm, 24mm).

6. OPERATING INSTRUCTIONS

6.1. Powering On/Off

Insert a charged battery pack into the base of the impact wrench until it clicks securely. To turn on, press the variable speed trigger. Release the trigger to turn off.

6.2. Selecting Rotation Direction (Forward/Reverse)

The forward/reverse switch is located above the trigger. Push the switch to the left for forward rotation (tightening) and to the right for reverse rotation (loosening). Position the switch in the center for the lock-off position, which prevents accidental starting.

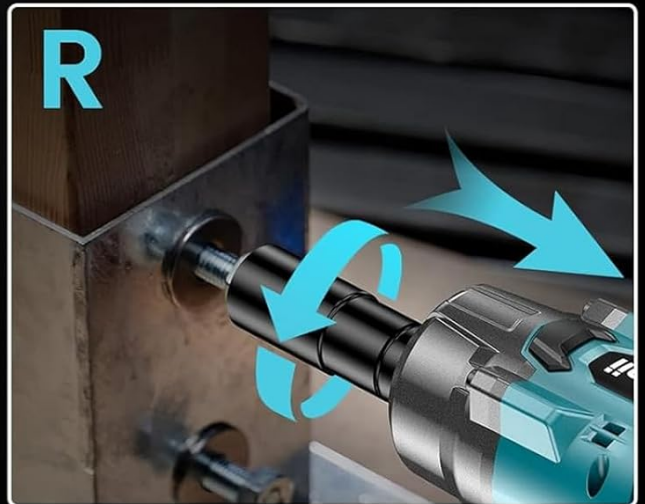
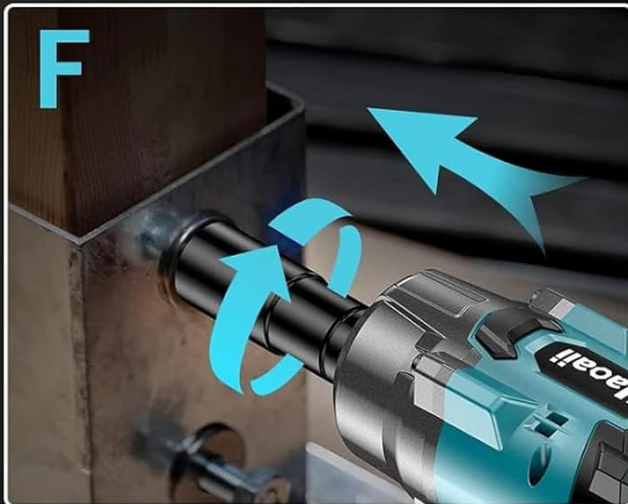


Image: A visual representation of the forward and reverse switch on the impact wrench, indicating how to adjust the rotation direction to tighten nuts or loosen screws.

6.3. Adjusting Speed and Torque

The Uaoaii IW800 features a 3-speed control panel and a variable speed trigger:

- **3-Speed Control Panel:** Use the button on the base of the tool to cycle through three preset speed modes:
 - **Low:** 0-1200 RPM
 - **Mid:** 0-1800 RPM
 - **High:** 0-2400 RPM
- **Variable Speed Trigger:** The speed and torque can be further controlled by the amount of pressure applied to the trigger. Pressing lightly results in lower speed, while pressing fully provides maximum speed and torque for the selected mode.

3 SPEED CONTROL PANEL

to meet your various working demands



Image: The Uaoaii IW800 impact wrench in use, with a close-up of the 3-speed control panel showing settings for Low (0-1200 RPM), Mid (0-1800 RPM), and High (0-2400 RPM).

VARIABLE SPEED TRIGGER

CHANGING THE SPEED OF
THE WRENCH WITH THE
PRESSURE YOU APPLY TO
THE TRIGGER



Image: A graphic highlighting the variable speed trigger, explaining that the speed of the wrench changes with the pressure applied to the trigger.

6.4. Reverse Brake Stop Function

In reverse mode, once a nut or bolt is loosened, the brake stop device activates. This reduces the speed and torque, preventing the fastener from spinning off completely and potentially damaging threads or falling into inaccessible areas.



Image: The Uaoai IW800 impact wrench in reverse mode, illustrating the brake stop function which reduces speed and torque once a fastener is loosened.

7. MAINTENANCE

7.1. Cleaning

- Always disconnect the battery pack before performing any cleaning or maintenance.

- Use a clean, damp cloth to wipe down the exterior of the tool. Do not use harsh chemicals or abrasive cleaners.
- Keep the ventilation openings clear of dust and debris to ensure proper cooling of the motor.

7.2. Storage

- Store the impact wrench and accessories in the provided carrying case in a dry, secure location, away from direct sunlight and extreme temperatures.
- Ensure batteries are fully charged before long-term storage to maintain battery health.

8. TROUBLESHOOTING

Problem	Possible Cause	Solution
Tool does not start	Battery not charged or improperly inserted.	Ensure battery is fully charged and correctly inserted.
Reduced power/torque	Low battery charge; incorrect speed setting.	Recharge battery; select a higher speed/torque mode.
Tool overheats	Prolonged heavy use; blocked ventilation.	Allow tool to cool down; clear ventilation openings.
Socket does not attach securely	Debris in anvil; incorrect socket size.	Clean anvil; use correct 1/2-inch impact socket.

9. SPECIFICATIONS

Feature	Specification
Model Number	IW800
Brand	Uaoaii
Max Torque	1000 N.m (738 ft-lbs)
No-Load Speed	0-1200 / 0-1800 / 0-2400 RPM (3-speed settings)
Voltage	21V
Battery Type	Lithium-Ion
Battery Capacity	4.0Ah
Charger Input	AC 110V-220V
Drive Size	1/2 inch Square
Motor Type	Brushless
Item Weight (bare tool)	4.4 pounds (approx.)
Item Length	6.69 Inches

Feature	Specification
Material	Stainless Steel

10. WARRANTY AND SUPPORT

Uaoaii provides a 365-day quality service for your purchase, including a replacement guarantee for any quality issues. For technical support, warranty claims, or any inquiries regarding your Uaoaii IW800 Cordless Impact Wrench, please contact Uaoaii customer service through your original point of purchase or visit the official Uaoaii store page.

Please retain your proof of purchase for warranty validation.

