

Manuals+

[Q & A](#) | [Deep Search](#) | [Upload](#)

manuals.plus /

- > [PawHut](#) /
- > [PawHut Wooden Hamster Cage D51-359V00ND Instruction Manual](#)

PawHut D51-359V00ND

PawHut Wooden Hamster Cage Instruction Manual

Model: D51-359V00ND



INTRODUCTION

This manual provides essential instructions for the assembly, operation, and maintenance of your PawHut Wooden Hamster Cage. Please read these instructions carefully before use to ensure proper setup and safe operation for your small animal.

The PawHut Wooden Hamster Cage is designed to provide a spacious and secure habitat for various small animals, including hamsters, dwarf hamsters, gerbils, chinchillas, guinea pigs, and bunnies. Its natural wood construction with acrylic panels offers both durability and clear visibility.

PRODUCT FEATURES

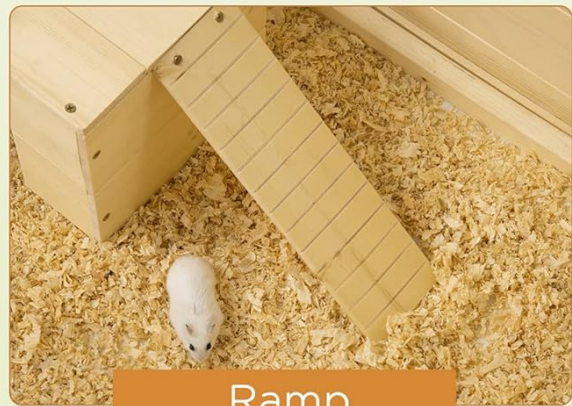
- **Spacious Design:** Offers approximately 5 ft² (5800 cm²) of living space for exercise and movement.
- **Easy Access:** Features an openable mesh top for convenient entry, exit, and interaction.
- **Simple Cleaning:** Equipped with a detachable bottom sliding tray for quick and efficient cleaning.
- **Clear Observation:** Front acrylic panel provides an unobstructed view of your pet.
- **Durable Construction:** Made from fir wood and wire mesh for rust resistance and stability.
- **Integrated Accessories:** Includes an internal hut and an extra-wide ramp for enrichment.

SPACIOUS SPACE

Allows hamsters space to run and scamper



Hut



Ramp

Image: The spacious interior of the PawHut cage, featuring a built-in hut and an access ramp, designed for small animal activity.

FIR WOOD CONSTRUCTION



Wire Mesh
for rust resistance



Acrylic window
for observation



Image: Detailed views of the cage construction, highlighting the wire mesh top for ventilation and the clear acrylic front panel for pet observation.

PACKAGE CONTENTS

Please verify that all components are present before beginning assembly. If any parts are missing or damaged, please contact customer support.

- Wooden panels (sides, front, back, bottom)
- Mesh top panels
- Acrylic front panel
- Sliding tray
- Internal hut components
- Ramp
- Assembly hardware (screws, connectors)
- Instruction manual (this document)

SETUP AND ASSEMBLY

Assembly is required. Follow these steps carefully. It is recommended to have a clear, flat workspace.

1. **Unpack Components:** Carefully remove all parts from the packaging and lay them out. Check against the package contents list.
2. **Assemble Base Structure:** Connect the side, front, and back wooden panels to form the main enclosure. Ensure all connections are secure using the provided hardware.
3. **Install Acrylic Panel:** Carefully slide or secure the clear acrylic front panel into its designated grooves or frame.
4. **Insert Sliding Tray:** Slide the bottom tray into the base of the cage. Ensure it sits flush and can be easily removed for cleaning.
5. **Assemble Internal Hut:** Construct the small internal hut according to its specific instructions and place it inside the cage.
6. **Attach Ramp:** Secure the ramp in its intended position, connecting the main floor to the hut or an elevated platform if applicable.
7. **Secure Top Panels:** Attach the wire mesh top panels. Ensure they are properly hinged and can be securely closed.
8. **Final Check:** Verify that all screws are tightened, and all components are stable and secure. Ensure there are no gaps or sharp edges that could harm your pet.



Image: The fully assembled PawHut Wooden Hamster Cage, showcasing its natural wood finish and clear front panel.

OPERATING INSTRUCTIONS

Placing Your Pet

Once assembled, place appropriate bedding, food, water, and enrichment items inside the cage before introducing your small animal. The openable top allows for easy placement and removal of your pet.

OPENABLE TOP

Openable Top



Image: The cage with its mesh top open, demonstrating the easy access for pet interaction and placement of accessories.

Observation

The clear acrylic front panel provides an excellent view of your pet's activities without disturbing them. This allows for easy monitoring of their health and behavior.



Image: The PawHut cage situated in a room, showcasing the clear front panel for pet observation and integration into a home environment.

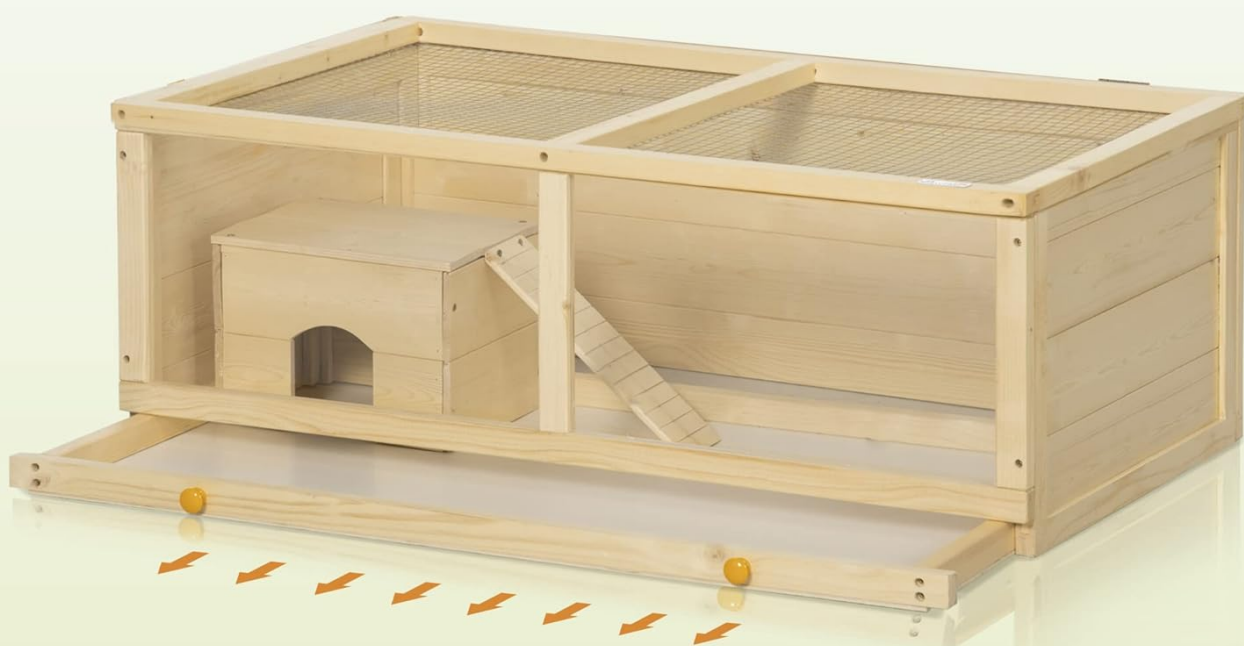
MAINTENANCE AND CLEANING

Regular cleaning is crucial for your pet's health and hygiene. The PawHut cage is designed for ease of maintenance.

1. **Daily Spot Cleaning:** Remove soiled bedding and waste daily.
2. **Weekly Deep Cleaning:**
 - Carefully remove your pet and place them in a secure temporary enclosure.
 - Slide out the bottom tray. Dispose of all old bedding.
 - Wipe down the interior surfaces of the cage, including the wooden panels, acrylic front, and mesh top, with a pet-safe cleaner or mild soap and water.
 - Thoroughly rinse all cleaned parts to remove any soap residue.
 - Allow all components to air dry completely before adding fresh bedding and returning your pet.
3. **Wood Care:** While the fir wood is durable, avoid excessive moisture to prevent warping or damage. Ensure

the cage is completely dry after cleaning.

BOTTOM SLIDING TRAY



Easy to clean

Image: The bottom sliding tray of the PawHut cage being removed, illustrating the ease of cleaning and bedding replacement.

TROUBLESHOOTING

If you encounter any issues with your PawHut Wooden Hamster Cage, please refer to the following common concerns:

- **Assembly Difficulties:** If you find assembly challenging, double-check that you are using the correct hardware for each step and that panels are oriented correctly. Refer to the visual instructions provided with the product. Do not force components together.
- **Gaps in Structure:** Ensure all screws are fully tightened. If minor gaps persist, especially around the sliding tray, consider adding a pet-safe barrier to prevent bedding from escaping, while ensuring proper ventilation.
- **Pet Chewing:** Small animals may chew on wooden parts. Provide ample chew toys and enrichment items to redirect this natural behavior. Regularly inspect the cage for any significant damage from chewing and address it promptly to ensure your pet's safety.
- **Uneven Top Lid:** If the top lid appears uneven, check that all hinges are correctly installed and tightened.

Slight adjustments to hinge placement may resolve minor alignment issues.

SPECIFICATIONS

Model Number	D51-359V00ND
Brand	PawHut
Overall Dimensions	100L x 58W x 38H cm (39.4" L x 22.8" W x 15" H)
Internal Area	Approx. 5 ft ² / 5800 cm ²
Weight	8.98 kg
Material	Fir Wood, Acrylic, Alloy Steel
Manufacturer	Aosom Canada
Country of Origin	China
Recommended Use	Indoor use for small animals (hamsters, gerbils, chinchillas, guinea pigs, bunnies)

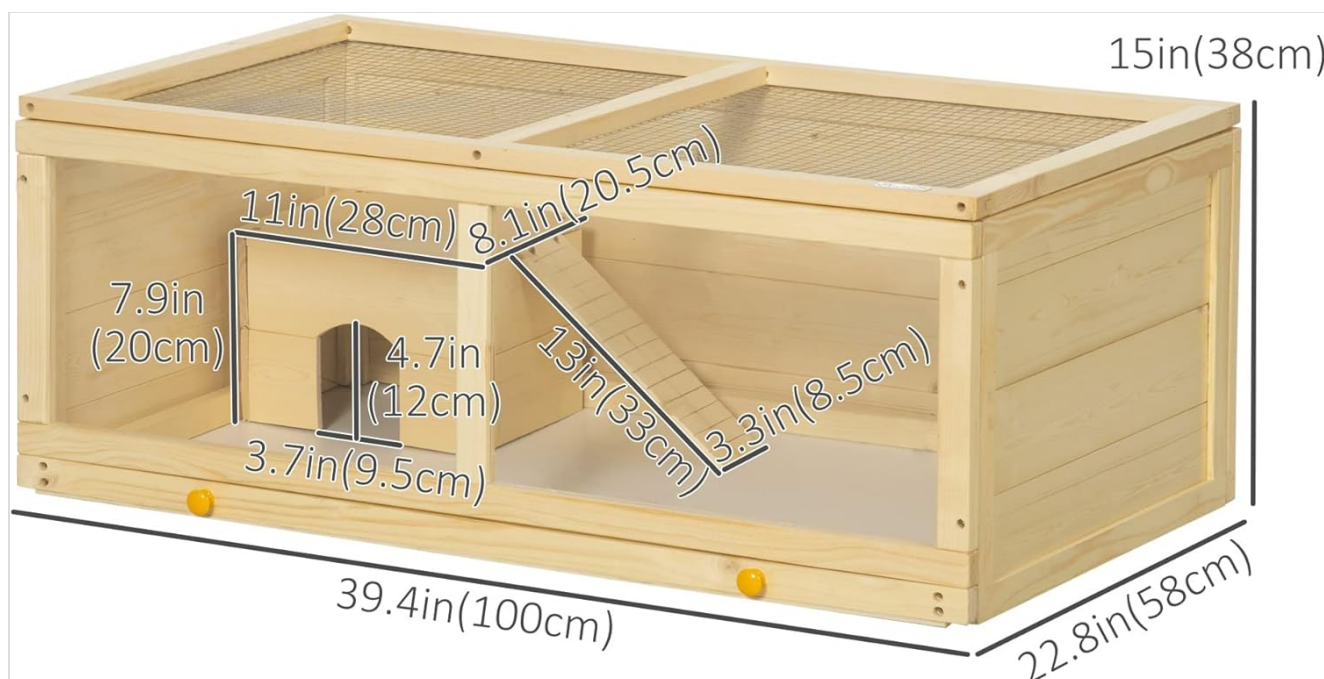


Image: Detailed diagram illustrating the dimensions of the PawHut Wooden Hamster Cage in inches and centimeters.

WARRANTY AND SUPPORT

For any questions regarding your PawHut Wooden Hamster Cage, including assembly assistance, missing parts, or product concerns, please contact the manufacturer's customer support.

Manufacturer: Aosom Canada

Contact Information: Please refer to the contact details provided with your purchase documentation or visit the official PawHut website for support options.

While specific warranty details are not provided in this manual, standard consumer protection laws apply. Keep your proof of purchase for any warranty claims.



© 2023 PawHut. All rights reserved.

This manual is for informational purposes only. Product specifications are subject to change without notice.