

Rotolight NEO3PRO

Rotolight NEO 3 PRO Imagemaker Kit User Manual

Model: NEO3PRO

Brand: Rotolight

1. INTRODUCTION

The Rotolight NEO 3 PRO Imagemaker Kit is an advanced, portable RGBWW LED light designed for professional photography and videography. It combines powerful continuous light with a High Speed Sync (HSS) strobe, offering exceptional versatility for various creative applications. This manual provides comprehensive instructions for setting up, operating, maintaining, and troubleshooting your NEO 3 PRO.

Key features include an intuitive full-color touchscreen, app control, a wide range of 16.7 million colors, 2,500 digital filters, built-in CineSFX, and broad compatibility with existing flash systems.

2. SAFETY INFORMATION

Please read all safety instructions carefully before using the Rotolight NEO 3 PRO. Failure to follow these instructions may result in electric shock, fire, or serious injury.

- Do not expose the device to water or excessive humidity.
- Do not operate the light with wet hands.
- Ensure proper ventilation to prevent overheating.
- Do not look directly into the light source when it is active, as it can cause eye strain or damage.
- Use only the specified battery and charger.
- Keep out of reach of children.
- Disconnect power before cleaning or performing maintenance.

3. PACKAGE CONTENTS

The Rotolight NEO 3 PRO Imagemaker Kit includes the following components:

- 1 x Rotolight NEO 3 PRO LED Light
- 1 x Diffuser Dome

- 1 x Rotolight NPF 770 Battery
- 1 x Fast Charger
- 1 x Ballhead Mount
- 1 x Cold Shoe Adapter
- 1 x NEO3 Pouch

4. SETUP

4.1 Battery Installation

1. Locate the battery compartment on the rear of the NEO 3 PRO.
2. Insert the provided Rotolight NPF 770 battery into the compartment, ensuring correct orientation.
3. Close the battery compartment cover securely.
4. Connect the fast charger to the battery and a power outlet to charge the battery before first use.

4.2 Mounting the Light

The NEO 3 PRO can be mounted using its 1/4"-20 thread or the included ballhead and cold shoe adapter.

- **On a Light Stand:** Attach the ballhead mount to a standard light stand. Secure the NEO 3 PRO to the ballhead's 1/4"-20 screw.
- **On-Camera:** Attach the cold shoe adapter to the ballhead, then slide the cold shoe adapter into your camera's hotshoe mount. Secure the NEO 3 PRO to the ballhead.



Figure 4.1: Front view of the Rotolight NEO 3 PRO, showing the touchscreen interface and control knobs.





Figure 4.2: Side profile of the Rotalight NEO 3 PRO, highlighting its compact design.





Figure 4.3: The NEO 3 PRO mounted on a camera, demonstrating its on-camera use.

5. OPERATING INSTRUCTIONS

5.1 Powering On/Off

Press and hold the power button located on the side of the unit to turn the NEO 3 PRO on or off. The full-color touchscreen will illuminate upon power-on.

5.2 Navigating the Touchscreen Interface

The NEO 3 PRO features an intuitive touchscreen for easy control. Tap icons to select modes (CCT, HSI, GELS, FLASH, SFX, SYS) and use the physical control knobs for fine adjustments within each mode.



Figure 5.1: The NEO 3 PRO's touchscreen displaying the main menu for various lighting modes.

5.3 Continuous Light Mode (CCT/HSI/GELS)

- **CCT (Correlated Color Temperature):** Adjust color temperature from warm to cool white light.
- **HSI (Hue, Saturation, Intensity):** Access 16.7 million colors for creative lighting.
- **GELS:** Select from 2,500 digital filters to simulate traditional gels.
- **True Aperture Dimming (FDIM):** This patented technology calculates and displays the light output as an F-stop for a subject at a given distance, ISO, and shutter speed, eliminating the need for a separate light meter.

5.4 High Speed Sync (HSS) Flash Mode

The NEO 3 PRO features a built-in HSS flash with zero recycle time, allowing for rapid firing. It is compatible with triggers from Godox, Profoto, Elinchrom, Neewer, and Pixapro flash receivers, enabling seamless integration into existing flash setups.

You can flash in any of the 16.7 million colors or 2,500 digital filters. The customized NPF 750 battery (included)

supports up to 100,000 full-power flashes on a single charge.

5.5 Special Effects (CineSFX)

Access the award-winning suite of CineSFX to add dynamic effects to your scenes. Available effects include Fire, Lightning, TV, Gunshot, Paparazzi, and more. You can customize, save, and instantly recall your favorite settings.

5.6 Rotolight App Control

Download the official Rotolight app to control your NEO 3 PRO remotely. The app allows you to adjust color, power, flash settings, and more. You can also create custom groups and projects to control up to 20 lights simultaneously from your mobile device.

5.7 Masters of Light Preset Packs

The NEO 3 PRO includes over 100+ built-in exclusive special effects, GEL, and HSI color presets. These presets are designed by leading photographers and filmmakers, offering quick access to professional lighting setups.



Figure 5.2: The NEO 3 PRO in use, providing illumination for a subject.



Figure 5.3: Creative lighting with the NEO 3 PRO, demonstrating color capabilities.

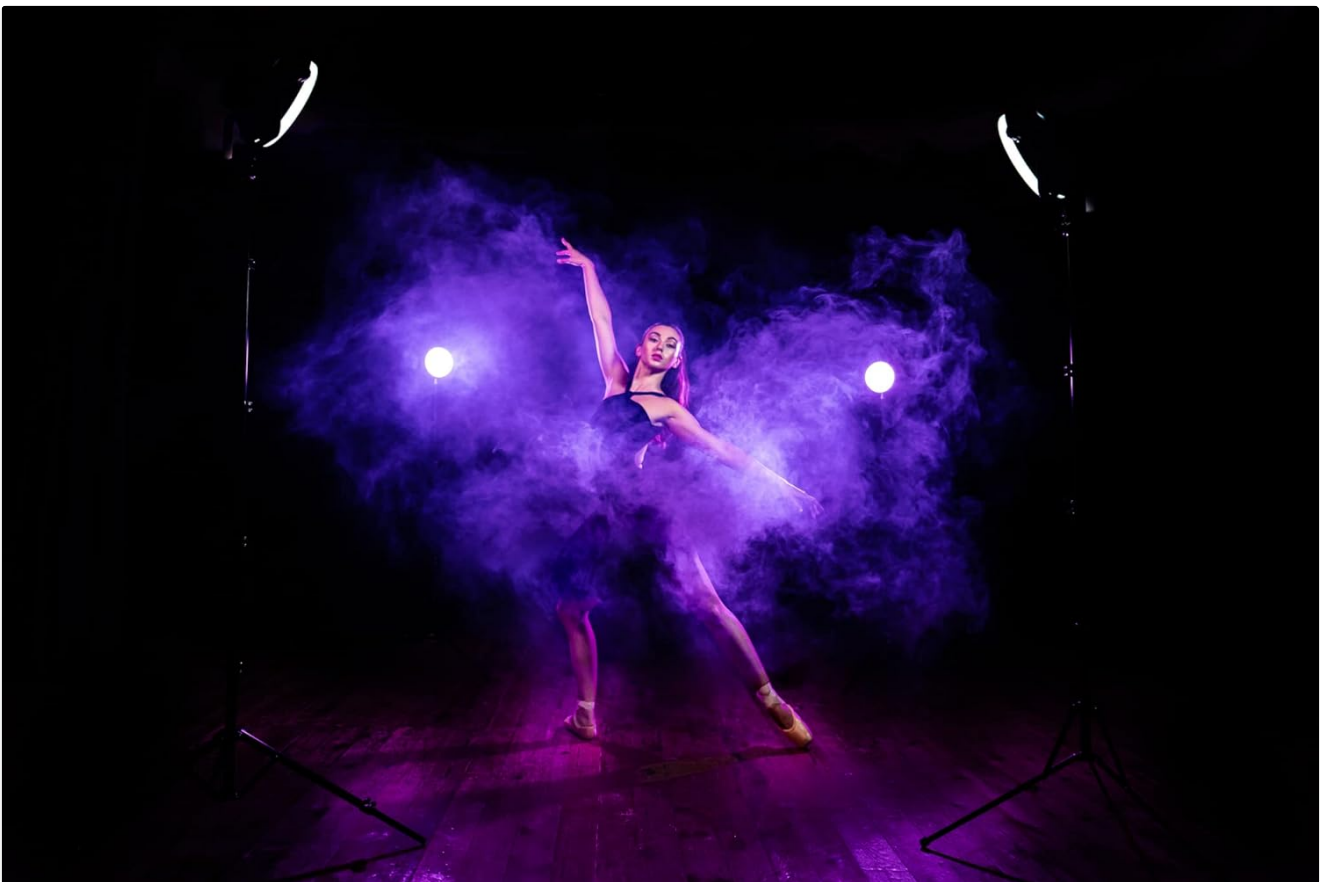


Figure 5.4: Multiple NEO 3 PRO units used in a studio setting for dynamic lighting.

6. MAINTENANCE

- **Cleaning:** Use a soft, dry cloth to clean the exterior of the light. Do not use abrasive cleaners or solvents. For the touchscreen, use a microfiber cloth.
- **Battery Care:** Store the battery in a cool, dry place when not in use. Avoid fully discharging the battery for extended periods.
- **Storage:** When not in use, store the NEO 3 PRO in its pouch or a protective case to prevent dust and damage.
- **Temperature:** Avoid operating or storing the light in extreme temperatures.

7. TROUBLESHOOTING

Problem	Possible Cause	Solution
Light does not power on.	Battery is not charged or incorrectly inserted.	Ensure battery is fully charged and correctly seated. Check power button.
App cannot connect to the light.	Wi-Fi connection issue or light is out of range.	Ensure Wi-Fi is enabled on both devices. Move closer to the light. Restart both the app and the light.
Flash not firing.	Incorrect flash settings or incompatible trigger.	Verify flash mode is active. Check trigger compatibility and settings. Ensure camera sync speed is appropriate.
Light is overheating.	Insufficient ventilation or prolonged high-power use.	Allow the light to cool down. Ensure vents are not blocked. Reduce power output if necessary.

8. SPECIFICATIONS

Feature	Detail
Product Dimensions	11.02 x 8.27 x 4.33 inches
Item Weight	3.31 pounds
Model Number	NEO3PRO
Batteries Required	1 Lithium Ion battery
Compatible Mountings	Hotshoe Mount, 1/4" - 20
Camera Flash	Built-In HSS Flash
Flash Sync Speed	1/8000th
Manufacturer	Rotolight
First Available	February 2, 2023





9. WARRANTY AND SUPPORT

The Rotolight NEO 3 PRO Imagemaker Kit is manufactured by Rotolight and comes with a standard manufacturer's warranty. For specific warranty terms and conditions, please refer to the documentation included with your product or visit the official Rotolight website.

For technical support, troubleshooting assistance, or inquiries regarding replacement parts, please contact Rotolight customer service. Information on optional extended protection plans may also be available from your retailer.

You can find more information and support resources on the [Rotolight Brand Store on Amazon](#).

Related Documents - NEO3PRO

	<p>Rotolight NEO 3 & AEOS 2 Quick Start Guide</p> <p>A concise guide to setting up and using Rotolight NEO 3 and AEOS 2 lighting systems, covering features, menus, flash modes, special effects, app connectivity, and troubleshooting.</p>
	<p>Rotolight NEO 3 & AEOS 2 Quick Start Guide</p> <p>A comprehensive quick start guide for the Rotolight NEO 3 and AEOS 2 LED lights, detailing features, operation, and setup for professional photography and videography.</p>
	<p>How to Connect Elinchrom Transmitter to Rotolight: Step-by-Step Guide</p> <p>Learn how to connect your Elinchrom transmitter to Rotolight NEO 3 and AEOS 2 lights. This guide covers firmware updates, setting speed mode, manual flash, and app control for seamless lighting integration.</p>
	<p>Rotolight AEOS User Manual: Operation, Features, and Specifications</p> <p>A comprehensive user manual for the Rotolight AEOS LED light. This guide details basic and advanced operation, special effects (CineSFX, Designer Fade), flash modes including High Speed Sync (HSS), control menus, technical specifications, filter information, mounting, batteries, warranty, and optional accessories. Learn how to maximize the performance of your AEOS lighting system.</p>



[Rotolight Anova PRO 2 User Manual: Professional LED Studio & Location Lighting](#)

Explore the Rotolight Anova PRO 2 user manual for detailed insights into this powerful, award-winning LED studio and location light. Learn about its features, operation, CineSFX™ effects, HSS capabilities, and technical specifications for professional photography and filmmaking.



[Rotolight NEO 3 / AEOS 2 Firmware Release 2.01 - Release Notes](#)

Details the firmware release notes for Rotolight NEO 3 and AEOS 2, version 2.01, highlighting new features like Wi-Fi control, Green-Magenta color correction, enhanced SFX modes, user-selectable fan modes, and Lux Mode. Also covers previous updates from version 1.2.