

ZOTA G83

ZOTA Mini Random Orbital Polisher (Model G83) Instruction Manual

Brand: ZOTA | Model: G83

- [Safety Information](#)
- [Product Overview](#)
- [Package Contents](#)
- [Setup](#)
- [Operation](#)
- [Maintenance](#)
- [Troubleshooting](#)
- [Specifications](#)
- [Warranty & Support](#)

1. IMPORTANT SAFETY INFORMATION

Read all safety warnings, instructions, illustrations, and specifications provided with this power tool. Failure to follow all instructions listed below may result in electric shock, fire, and/or serious injury.

- Always wear appropriate personal protective equipment, including eye protection, hearing protection, and gloves.
- Ensure the work area is clean, well-lit, and free from obstructions.
- Keep children and bystanders away while operating the tool.
- Do not operate power tools in explosive atmospheres, such as in the presence of flammable liquids, gases, or dust.
- Avoid accidental starting. Ensure the switch is in the off-position before connecting to power, picking up, or carrying the tool.
- Do not overreach. Keep proper footing and balance at all times.
- Disconnect the plug from the power source before making any adjustments, changing accessories, or

storing power tools.

- Use the correct tool for your application. Do not force the tool.
- Maintain tools with care. Keep cutting tools sharp and clean.
- Store idle power tools out of the reach of children and do not allow persons unfamiliar with the power tool or these instructions to operate the power tool.

2. PRODUCT OVERVIEW

The ZOTA Mini Random Orbital Polisher (Model G83) is a compact and versatile tool designed for car detailing and polishing small, intricate areas. It features an 8mm random orbital movement and a powerful 380-watt motor, offering variable speeds from 3000 to 7200 RPM for precise control. Its ergonomic design ensures comfortable handling, and the durable construction is made from Hi-impact nylon PA6-30%GF.



Figure 2.1: ZOTA Mini Random Orbital Polisher with key dimensions (11 inches long, 3-inch and 2-inch backing plates shown).

Key Components:



Figure 2.2: Labeled components including Head Grip, ON/OFF Switch, Carbon Brush (right and left), Speed Control, and Polishing/Sanding Disk.

- **Head Grip:** Provides a secure and comfortable hold during operation.
- **ON/OFF Switch:** Controls the power to the polisher.
- **Carbon Brush:** Replaceable components essential for motor function.
- **Speed Control:** Allows adjustment of the polishing speed (1-6 variable speeds, 3000-7200 RPM).
- **Polishing/Sanding Disk:** The attachment point for various pads.

3. PACKAGE CONTENTS

Verify that all items listed below are included in your package:

- Mini Polisher (x1)
- 3" Backing Plate (x1)
- 2" Backing Plate (x1)
- 3" Sponge Pads (x3)
- 3" Wool Pad (x1)
- 2" Sponge Pads (x4)
- 2" Microfiber Fast Finishing Pad (x1)

- Open Wrench H17 (x1)
- Carbon Brushes (x2)
- Microfiber Towel (x1)
- User Manual (x1)



Figure 3.1: All components included in the ZOTA Mini Polisher kit.

4. SETUP

4.1 Attaching Backing Plates and Pads

The polisher comes with both 2-inch and 3-inch backing plates to accommodate different pad sizes and detailing needs. The pads attach to the backing plate using a hook-and-loop (Velcro) system.

1. Select the desired backing plate (2-inch or 3-inch) and screw it onto the polisher's spindle until secure.
2. Choose the appropriate sponge or wool pad for your task.
3. Align the pad with the backing plate and firmly press it into place. The hook-and-loop system will secure it.

Your browser does not support the video tag.

Video 4.1: This video demonstrates how to attach and change the backing plates and polishing pads on the ZOTA Mini Polisher, highlighting the ease of the hook-and-loop system.

5. OPERATING INSTRUCTIONS

5.1 Preparing the Surface

Before polishing, ensure the surface is clean, dry, and free of dirt, grease, or contaminants. For optimal results, wash and decontaminate the vehicle's surface thoroughly.

5.2 Applying Compound/Polish

Apply a small amount of polishing compound or wax directly onto the pad. Avoid applying too much product, as this can lead to uneven results or excessive sling.

5.3 Powering On and Speed Control

1. Plug the polisher into a suitable power outlet.
2. Place the pad flat against the surface to be polished.
3. Press the ON/OFF switch to start the polisher.
4. Adjust the speed using the variable speed control dial (settings 1-6, 3000-7200 RPM) according to the product being used and the desired level of correction. Start with a lower speed and gradually increase as needed.

3000-7200 RPM Suitable for Different Materials and Applications

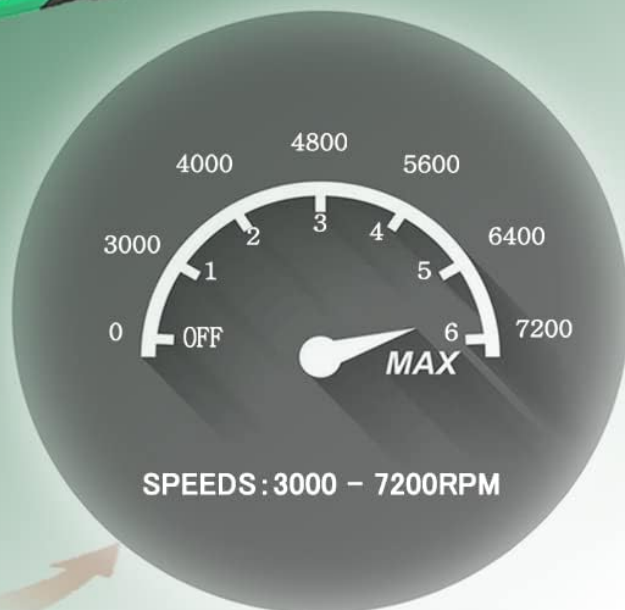


Figure 5.1: The speed control dial allows for precise adjustment of the polisher's RPM.

5.4 Polishing Technique

Move the polisher slowly and evenly across the surface in overlapping passes. Apply light to moderate pressure. The random orbital action helps prevent swirl marks. This tool is ideal for small areas, tight curves, headlights, A-pillars, and motorcycle detailing.



Figure 5.2: Demonstrating the use of the ZOTA Mini Polisher for precise detailing on a car's body.

Your browser does not support the video tag.

Video 5.3: This video illustrates the ZOTA Mini Polisher in action, demonstrating its effectiveness on various car surfaces and tight areas for detailing and polishing.

6. MAINTENANCE

6.1 Cleaning

After each use, disconnect the polisher from the power source. Clean the pads thoroughly to remove any residual compound or wax. Wipe down the tool body with a clean, damp cloth. Do not use harsh chemicals or abrasive cleaners.

6.2 Carbon Brush Replacement

The carbon brushes are wear-and-tear parts and should be inspected periodically. If the motor performance decreases or the tool stops working, the carbon brushes may need replacement. Use the provided open wrench to access and replace the brushes.



Figure 6.1: Visual guide for replacing the carbon brushes to maintain optimal tool performance.

7. TROUBLESHOOTING

Problem	Possible Cause	Solution
Polisher does not start.	No power supply; ON/OFF switch not engaged; Worn carbon brushes.	Check power connection; Ensure switch is fully engaged; Replace carbon brushes.
Reduced power or inconsistent operation.	Worn carbon brushes; Overload; Loose connections.	Replace carbon brushes; Reduce pressure; Check power cord and plug.
Excessive vibration or noise.	Improperly attached pad/backing plate; Damaged pad; Internal component issue.	Re-attach pad/backing plate securely; Replace damaged pad; Contact customer support if issue persists.

8. SPECIFICATIONS

Feature	Detail
Brand	ZOTA
Model Number	G83
Power Source	Corded Electric
Maximum Power	380 Watts
Voltage	120 Volts
Speed	3000-7200 RPM (6 Variable Speeds)

Feature	Detail
Orbital Movement	8mm Random Orbital
Backing Plate Sizes	2-inch, 3-inch
Material	Hi-impact nylon PA6-30%GF (Shell), Metal
Item Weight	3.75 lbs (approx.)
Color	Green

9. WARRANTY AND SUPPORT

9.1 Manufacturer's Warranty

The ZOTA Mini Random Orbital Polisher (Model G83) comes with a **1-year manufacturer's warranty**. This warranty covers defects in materials and workmanship under normal use. Please retain your proof of purchase for warranty claims.

For specific warranty terms and conditions, please refer to the warranty card included in your product packaging or contact ZOTA customer service.

9.2 Customer Support

If you have any questions, require technical assistance, or need to make a warranty claim, please contact ZOTA customer support. Contact information can typically be found on the product packaging, the official ZOTA website, or through your retailer.

When contacting support, please have your product model number (G83) and proof of purchase readily available to expedite the process.