

SOLOMARK S-optics-A005

SOLOMARK Digital Night Vision Binoculars S-optics-A005 User Manual

Model: S-optics-A005

1. INTRODUCTION

Thank you for choosing the SOLOMARK Digital Night Vision Binoculars, Model S-optics-A005. This device is designed for both day and night observation, offering advanced optical clarity and digital recording capabilities. Please read this manual thoroughly before using the device to ensure proper operation and to maximize its performance and longevity.

The S-optics-A005 features a powerful 850nm infrared illuminator, allowing clear viewing up to 400 meters in complete darkness. Its multi-coated optics enhance light transmission and reduce glare, providing exceptional image quality. With 7x optical magnification, 2x digital zoom, and a 31mm objective lens, you can observe distant objects with precision. The integrated 4-inch viewing screen offers comfortable viewing, and the device supports photo and video recording to an included 32GB Micro SD card.

SOLOMARK Professional Night Vision

4" Large Screen

400M Viewing Range



Image 1.1: SOLOMARK Digital Night Vision Binoculars in use, showing a deer on the display screen.

2. PACKAGE CONTENTS

Before first use, please check the package contents to ensure all items are present:

- SOLOMARK Digital Night Vision Binoculars (S-optics-A005)
- USB Cable
- A/V Cable
- 32GB Micro SD Card
- Neck Strap
- Cleaning Cloth
- Carrying Case
- User Manual (this document)



Image 2.1: Included accessories with the SOLOMARK Night Vision Binoculars.

3. DEVICE LAYOUT

Familiarize yourself with the main components and controls of your night vision binoculars:

1. **Objective Lens:** Front lenses for light intake.
2. **IR Illuminator:** Infrared LED for night vision.
3. **Eyepiece/Display Screen:** Where you view the image.
4. **Focus Wheel:** Adjusts focus for clear images.
5. **Power Button:** Turns the device on/off.
6. **IR Button:** Activates and adjusts infrared levels.
7. **Menu Button:** Accesses device settings.
8. **Zoom/Navigation Buttons:** Adjusts digital zoom and navigates menus.
9. **Record/Capture Button:** Initiates photo or video recording.
10. **Battery Compartment:** Holds AA batteries.
11. **USB/A/V Ports:** For connecting to external devices.
12. **Tripod Mount:** For stable viewing with a tripod.



Image 3.1: Front and rear views of the binoculars.

4. SETUP

4.1. Installing Batteries

The device requires 8 AA batteries (not included). Alternatively, it can be powered by a power bank via the USB port.

1. Locate the battery compartment on the underside of the binoculars.
2. Open the battery compartment cover.
3. Insert 8 AA batteries, ensuring correct polarity (+/-).
4. Close the battery compartment cover securely.



Image 4.1: Battery installation and external power option.

4.2. Inserting the Micro SD Card

A 32GB Micro SD card is included for storing photos and videos.

1. Locate the Micro SD card slot, usually near the USB/A/V ports.
2. Insert the Micro SD card with the gold contacts facing down until it clicks into place.
3. To remove, gently push the card in until it springs out.

5. OPERATING INSTRUCTIONS

5.1. Powering On/Off

- To power on, press and hold the **Power Button** for a few seconds.
- To power off, press and hold the **Power Button** again until the screen shuts down.

5.2. Focusing

After powering on, adjust the focus for a clear image:

- Look through the eyepiece at an object.
- Rotate the **Focus Wheel** (typically located between the eyepieces or on the objective lens) until the image appears sharp on the display.

5.3. Day and Night Use

The binoculars are suitable for both day and night observation.

- **Daytime Use:** For color images, ensure the IR illuminator is turned **OFF**.
- **Nighttime Use:** For clear viewing in low light or complete darkness, activate the IR illuminator.



Image 5.1: Day and night viewing capabilities.

5.4. Adjusting IR Levels

The device features 3 adjustable IR levels to adapt to ambient light conditions.

1. Press the **IR Button** to cycle through IR levels (Level 1, Level 2, Level 3, Off).
2. Higher IR levels provide greater visibility in darker conditions but consume more battery power.



Built in 3W Infrared LED, 850nm Infrared Illuminator

3 IR levels are adjustable according to the ambient light.



Image 5.2: Adjusting infrared levels for optimal night vision.

5.5. Digital Zoom

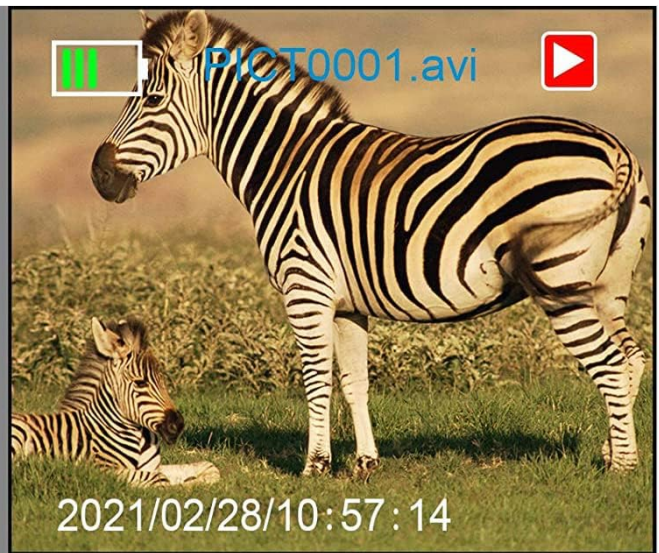
Use the digital zoom function to magnify the image further.

- While observing, press the **Zoom In Button** (often marked with '+') to increase digital magnification up to 2x.
- Press the **Zoom Out Button** (often marked with '-') to decrease digital magnification.

5.6. Photo and Video Recording

The device allows you to capture photos and record videos directly to the Micro SD card.

1. Ensure a Micro SD card is inserted.
2. To take a photo, press the **Record/Capture Button** once. The screen will briefly flash, indicating a photo has been taken.
3. To record a video, press and hold the **Record/Capture Button**. A recording indicator will appear on the screen. Press again to stop recording.



32G Micro card can record photos and videos in day and night



Image 5.3: Photo and video recording in day and night conditions.



Image 5.4: The included 32GB Micro SD card enables continuous recording.

5.7. Connecting to Computer/TV

You can view your recorded media on a computer or TV.

- **To Computer:** Connect the binoculars to your computer using the provided USB cable. The device will appear as a removable disk, allowing you to transfer files.
- **To TV:** Connect the binoculars to your TV using the provided A/V cable. Select the appropriate input source on your TV to view the device's display.



Image 5.5: Connecting the device to a computer or TV.

5.8. Tripod Mounting

For extended observation or stable recording, the binoculars can be mounted on a tripod.

- Locate the tripod mount thread on the bottom of the device.
- Screw the binoculars onto a standard tripod (not included).



Image 5.6: Binoculars mounted on a tripod.

6. MAINTENANCE

- **Cleaning Lenses:** Use the provided cleaning cloth or a soft, lint-free cloth to gently wipe the objective and eyepiece lenses. Do not use abrasive materials or harsh chemicals.
- **Cleaning Body:** Wipe the body of the binoculars with a soft, damp cloth. Avoid excessive moisture.
- **Storage:** Store the device in its carrying case in a cool, dry place when not in use. Remove batteries if storing for extended periods to prevent leakage.
- **Water Resistance:** The device has an IPX4 water resistance rating, meaning it is protected against splashing water from any direction. Do not submerge the device in water.



Image 6.1: The binoculars are designed with water resistance.

7. TROUBLESHOOTING

Problem	Possible Cause	Solution
Device does not power on.	Low or dead batteries; incorrect battery polarity.	Replace batteries with fresh ones, ensuring correct polarity. Check external power source if used.
Image is blurry.	Improper focus; dirty lenses.	Adjust the focus wheel. Clean the objective and eyepiece lenses with a soft cloth.
Poor visibility in darkness.	IR illuminator off or set too low; objects out of range.	Activate IR illuminator and increase IR level. Ensure objects are within the 400m range.
Cannot record photos/videos.	No Micro SD card inserted; Micro SD card full or corrupted.	Insert a Micro SD card. Delete old files or format the card (this will erase all data). Try a different Micro SD card.
Device freezes or becomes unresponsive.	Software glitch.	Remove and reinsert batteries to perform a hard reset.

8. SPECIFICATIONS

Feature	Specification
Brand	SOLOMARK
Model Number	S-optics-A005
Optical Zoom	7x
Digital Zoom	2x
Objective Lens Diameter	31 mm
IR Illuminator	3W 850nm Infrared LED
Viewing Range in Full Darkness	Up to 400 meters

Feature	Specification
Display Screen	4-inch TFT (2-inch internal), 320x240 pixels
Storage	32GB Micro SD card (included)
Power Source	8x AA batteries (not included) or 5V Power Bank
Water Resistance	IPX4 (Splash-proof)
Dimensions (L x W x H)	27.2 x 20.9 x 9.3 cm (Package)
Weight	1.34 kg (Package)

9. WARRANTY AND SUPPORT

Specific warranty information is not available in the provided product details. For warranty claims, technical support, or service inquiries, please refer to the contact information provided with your purchase or visit the official SOLOMARK website.

Always retain your proof of purchase for any warranty-related issues.