



Manuals.plus /

› Chocovision /

› Chocovision my30 High-Speed Hair Dryer User Manual

Chocovision my30

Chocovision my30 High-Speed Hair Dryer User Manual

Model: my30

1. PRODUCT OVERVIEW

The Chocovision my30 is a high-performance hair dryer designed for efficient and gentle hair drying. It features a powerful 1300W motor, generating a high-speed airflow of 22m/s and a large air volume of 6.7m³/min for rapid drying. Equipped with 200 million negative ions, it helps to neutralize static, close hair cuticles, and enhance hair moisture and shine. The dryer offers constant temperature hair care and a unique hot/cold rhythm mode for optimal styling and hair health. Its compact and lightweight design (407g) ensures comfortable handling, while its quiet operation (59dB) provides a pleasant user experience.



Figure 1.1: Chocovision my30 Hair Dryer and included nozzle.

高耐熱性の良質な材料を採用
安全断熱・やけどしない

滑り止め・指紋防止・無臭・塗装剥がれなし

NTC温度検出 | 過熱保護 | ヒューズ保護

Figure 1.2: Overview of the Chocovision my30 Hair Dryer's key features.

2. SETUP

2.1 Unboxing and Inspection

Carefully remove all components from the packaging. Ensure the package contains the hair dryer unit and the magnetic styling nozzle. Inspect the dryer for any visible damage. If any damage is found, do not use the product and contact customer support.

2.2 Attaching the Nozzle

The styling nozzle attaches magnetically to the front of the dryer. Simply align the nozzle with the air outlet and it will snap into place. The nozzle can be rotated 360 degrees to direct airflow as needed.



Figure 2.1: Magnetic attachment of the styling nozzle.

2.3 Power Connection

Plug the power cord into a standard 110V AC electrical outlet. Ensure the outlet is compatible with the dryer's power requirements.

3. OPERATING INSTRUCTIONS

3.1 Power On/Off and Fan Speed Control

Locate the power switch on the handle. Slide the switch to turn the dryer on or off. This switch also controls the fan speed:

- **OFF:** Dryer is off.
- **I (Low Speed):** Activates low fan speed.
- **II (High Speed):** Activates high fan speed.

3.2 Temperature Settings

Press the temperature control button to cycle through the available heat settings. The LED ring around the air outlet will change color to indicate the current temperature mode:

- **Cold Air (Blue LED):** Approximately 25°C. Ideal for setting hairstyles and closing hair cuticles.
- **Warm Air (Orange LED):** Approximately 55°C. Suitable for gentle drying and everyday use.
- **Hot Air (Red LED):** Approximately 75°C. For rapid drying of wet hair.

3.3 Hot/Cold Rhythm Mode (Smart Cycle Mode)

To activate the hot/cold rhythm mode, press and hold the temperature control button. The LED ring will cycle between red and blue, indicating alternating hot and cold airflow. This mode helps to dry hair quickly while simultaneously closing cuticles for enhanced shine and reduced frizz.

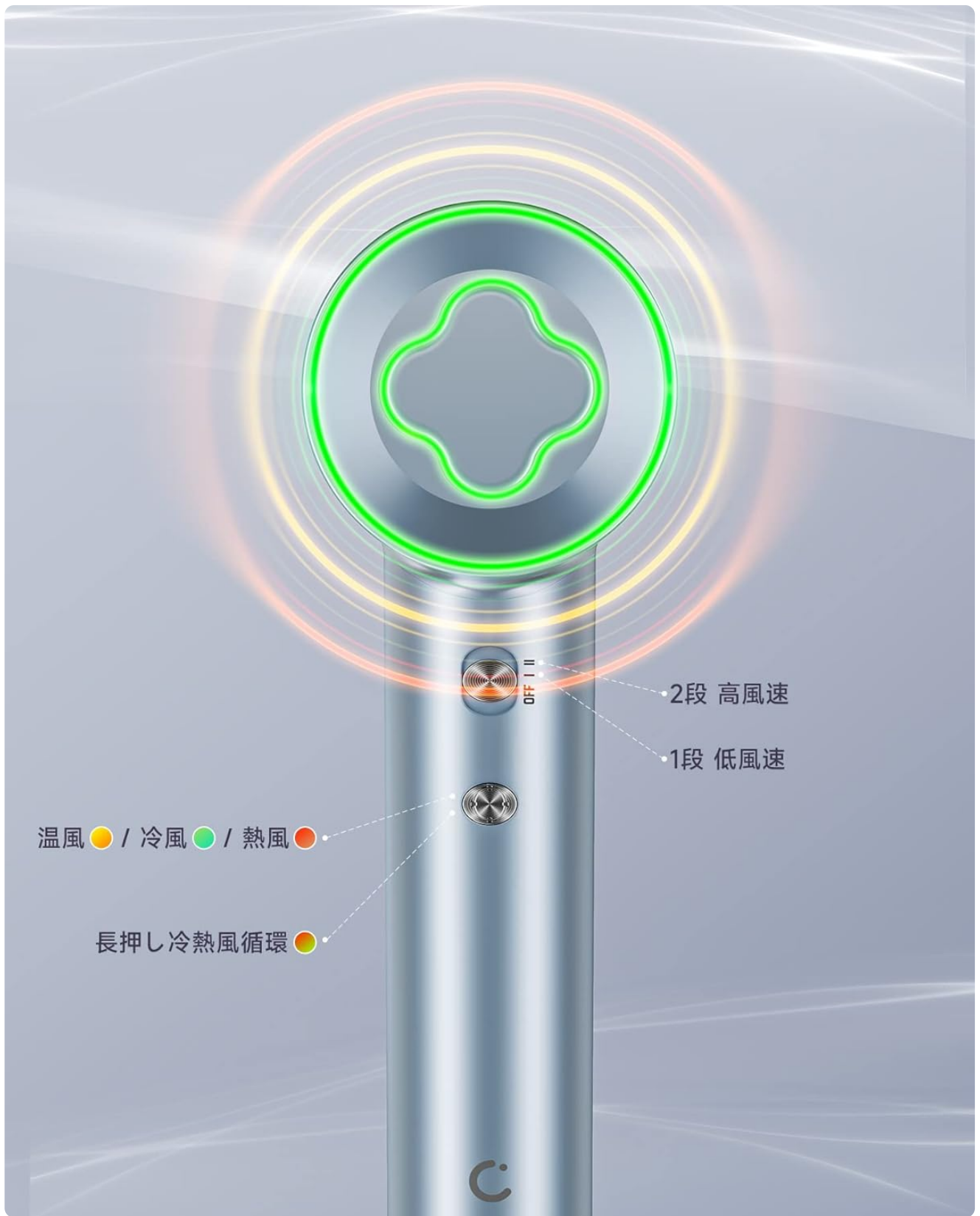


Figure 3.1: Control buttons for power, fan speed, and temperature.

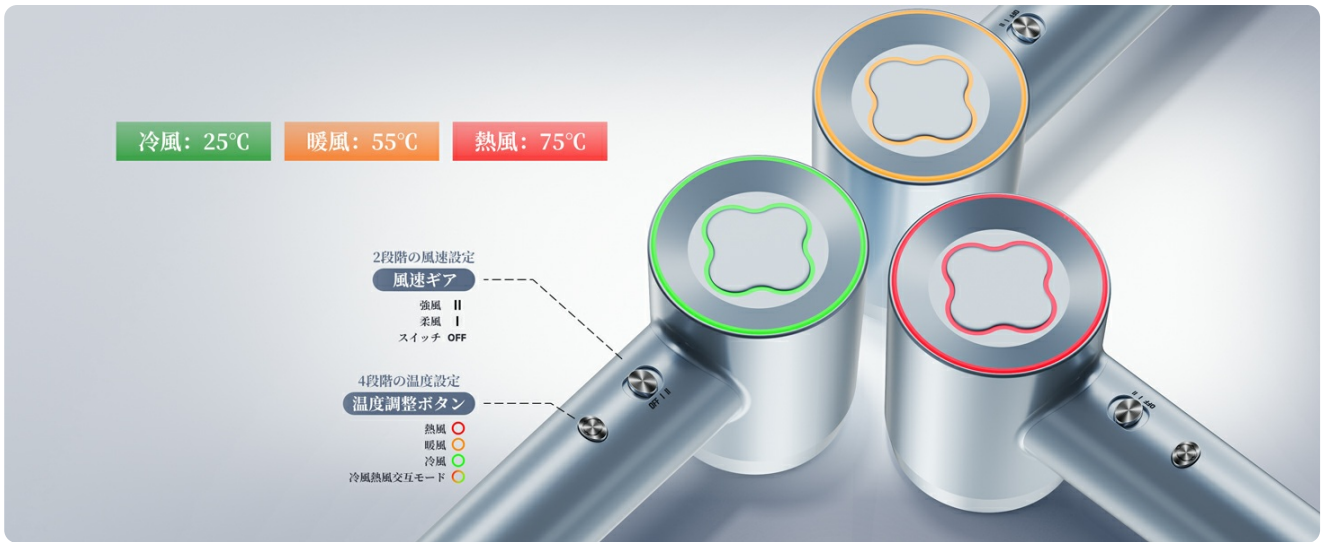


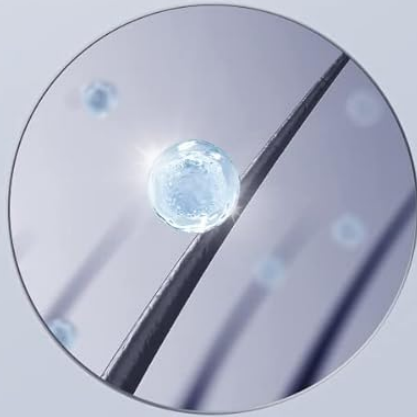
Figure 3.2: Visual representation of temperature settings via LED ring.

3.4 Negative Ion Technology

The Chocovision my30 hair dryer continuously releases 200 million negative ions during operation. These ions help to reduce static electricity, smooth hair cuticles, and lock in moisture, resulting in softer, shinier, and healthier-looking hair.

2億マイナスイオン

優しいヘアケア・髪にスパをする!



84%⁺↑
うるおい



26%⁺↑
こうたく



48%⁺↑
滑らかさ



適度な量のマイナスイオンは、髪の毛のプラス電荷を中和し、
キューティクルを閉じて潤いを閉じ込めます。

Figure 3.3: Negative ion technology for enhanced hair care.

4. MAINTENANCE

4.1 Cleaning the Air Filter

To maintain optimal performance and prevent dust and hair from entering the motor, regularly clean the air filter located at the bottom of the handle. The dryer features a 0.2mm high-density metal filter.

1. Ensure the dryer is unplugged and completely cool.
2. Gently twist or pull the filter cover to remove it.
3. Use a soft brush or a dry cloth to remove any accumulated dust or lint from the filter mesh. Do not use water.
4. Replace the filter cover, ensuring it is securely fastened.

ナノスプレー、滑り止め、指紋防止
つや消しの質感で、なめらかな肌触り



0.2mm 超高密度金属フィルター
ほこり髪の吸い込みを防ぎ

Figure 4.1: Location of the 0.2mm high-density metal filter for easy cleaning.

4.2 General Cleaning

Wipe the exterior of the dryer with a soft, damp cloth. Do not use abrasive cleaners or immerse the dryer in water. Ensure the dryer is completely dry before plugging it in again.

4.3 Storage

Store the dryer in a cool, dry place, away from direct sunlight and moisture. Avoid wrapping the power cord tightly around the dryer, as this can damage the cord.

5. TROUBLESHOOTING

If you encounter any issues with your Chocovision my30 hair dryer, please refer to the following common problems and solutions:

Problem	Possible Cause	Solution
Dryer does not turn on.	No power supply; Power switch is off; Fuse protection activated.	Check if the power cord is securely plugged into a live outlet. Ensure the power switch is in the 'I' or 'II' position. If the dryer still doesn't turn on, contact customer support.
Weak airflow.	Air inlet/outlet blocked; Filter is dirty.	Ensure nothing is obstructing the air inlet or outlet. Clean the air filter as described in Section 4.1.
Dryer stops unexpectedly during use.	Overheat protection activated.	Unplug the dryer and allow it to cool down for at least 10-15 minutes. Check and clean the air filter. Ensure proper ventilation during use.
Unusual noise.	Foreign object in the air inlet; Motor issue.	Unplug the dryer and check the air inlet for any foreign objects. If the noise persists, contact customer support.

The Chocovision my30 is equipped with multiple safety features, including NTC temperature detection, overheat protection, and fuse protection, to ensure safe operation.



Figure 5.1: Built-in safety mechanisms for user protection.

6. SPECIFICATIONS

Feature	Specification
Model Number	my30
Brand	Chocovision
Wattage	1300 W
Voltage	110 Volts
Power Source	Corded Electric
Motor Speed	Up to 110,000 RPM
Airflow Speed	22 m/s
Air Volume	6.7 m ³ /min
Negative Ions	200 Million
Noise Level	59 dB
Weight (Main Unit)	407 g
Package Dimensions	32.9 x 16.4 x 8.9 cm
Package Weight	1.06 kg
Included Components	Hair Dryer, Magnetic Styling Nozzle

59dB だけの動作音



わずか 407g (本体のみ)



Figure 6.1: Key specifications compared to other models.

Figure 6.2: Product dimensions and included accessories.

7. OFFICIAL PRODUCT VIDEOS

Watch these official product videos for a visual guide on using your Chocovision my30 Hair Dryer.

Your browser does not support the video tag.

Video 7.1: Demonstration of the Chocovision my30 Hair Dryer's powerful airflow and quick drying capabilities.

Your browser does not support the video tag.

Video 7.2: Overview of the Chocovision my30 Hair Dryer's features and benefits, including its quiet operation.

8. WARRANTY AND SUPPORT

For information regarding the product warranty, please refer to the warranty card included in your product packaging or consult the retailer from whom you purchased the product. Warranty terms and conditions may vary by region and retailer.

For technical support, product inquiries, or service requests, please contact Chocovision customer support through their official website or the contact information provided in your product documentation.

Please retain your proof of purchase for any warranty claims.