

## Grundig HS 6230

# Grundig EasyCurl Automatic Cordless Hair Curler HS 6230 User Manual

Model: HS 6230 (Article Number: GMS3980)

[Components](#)   [Setup](#)   [Operation](#)   [Maintenance](#)   [Troubleshooting](#)   [Specifications](#)   [Warranty & Support](#)

[Introduction](#)   [Safety Instructions](#)   [Product](#)

## 1. INTRODUCTION

Thank you for choosing the Grundig EasyCurl Automatic Cordless Hair Curler HS 6230. This device is designed for quick and easy hair styling, allowing you to create beautiful curls effortlessly. Its cordless design and ceramic coating ensure a gentle and convenient styling experience. Please read this manual carefully before first use to ensure safe and optimal operation.



Image 1.1: Front view of the Grundig EasyCurl HS 6230.

## 2. IMPORTANT SAFETY INSTRUCTIONS

---

To prevent injury or damage to the appliance, always observe the following safety precautions:

- **Do not use this appliance near water:** Avoid using in bathtubs, showers, or basins filled with water.
- **Burn Hazard:** The curling barrel becomes hot during use. Avoid direct contact with skin.
- **Keep out of reach of children:** Especially during use and while cooling down.
- **Never leave unattended:** Do not leave the appliance unsupervised when it is switched on or charging.
- **Power Source:** Only charge the device using the provided USB cable and a compatible power adapter (not included).
- **Damage:** Do not use the appliance if it is damaged. Contact customer support for assistance.
- **Storage:** Allow the appliance to cool completely before storing.

## 3. PRODUCT COMPONENTS

---

Familiarize yourself with the parts of your Grundig EasyCurl HS 6230:

1. **Curling Chamber:** Where hair is automatically drawn in for curling.
2. **Temperature/Timer Display (LCD):** Shows selected temperature and timer settings.
3. **Power Button:** Turns the device on/off.
4. **Mode/Adjust Button:** Used to cycle through settings (temperature, timer, curl direction).
5. **Adjustment Buttons (Up/Down):** To increase or decrease values for temperature and timer.
6. **USB Charging Port:** For recharging the internal Li-ion battery.
7. **Hair Sectioning Tool:** Helps separate hair strands for consistent curling.
8. **Storage Pouch:** For convenient storage and travel.



Image 3.1: Back view of the curler, showing the USB charging port.

Image 3.2: Close-up of the control panel with LCD display and buttons.

## 4. SETUP

---

### 4.1. Initial Charging

Before first use, fully charge the device.

- Connect the provided USB cable to the charging port on the curler.
- Plug the other end of the USB cable into a compatible USB power adapter (e.g., phone charger, computer USB port).
- The LCD display will indicate charging status. A full charge takes approximately 3 hours.
- Once fully charged, the device offers up to 40 minutes of cordless operation.

### 4.2. Preparing Your Hair

- Ensure your hair is clean, dry, and tangle-free.
- Comb through your hair to remove any knots.
- For best results, use the included hair sectioning tool to separate small, even sections of hair.

## 5. OPERATING INSTRUCTIONS

---

### 5.1. Powering On and Setting Temperature

- Press and hold the **Power Button** to turn on the device. The LCD display will light up.

- Press the **Mode/Adjust Button** to cycle through settings: Temperature, Timer, and Curl Direction.
- When the temperature setting is active (usually indicated by a flashing temperature value), use the **Up/Down Adjustment Buttons** to select your desired temperature:
  - 160 °C (320 °F) - For fine or damaged hair
  - 180 °C (356 °F) - For normal hair
  - 200 °C (392 °F) - For thick or coarse hair
- Allow the device to heat up. The display will show the current temperature rising until it reaches the set temperature.

## 5.2. Setting the Timer and Curl Direction

- After setting the temperature, press the **Mode/Adjust Button** again to select the timer setting.
- Use the **Up/Down Adjustment Buttons** to set the curling time from 3 to 15 seconds. Longer times result in tighter curls.
- Press the **Mode/Adjust Button** once more to select the curl direction. Use the **Up/Down Adjustment Buttons** to choose:
  - **L (Left)**: For curls facing left.
  - **R (Right)**: For curls facing right.
  - **A (Auto)**: Alternates curl direction for a more natural look.

## 5.3. Curling Your Hair

- Take a small section of hair (approximately 1-inch wide).
- Hold the curler vertically with the opening of the curling chamber facing your head.
- Place the section of hair into the curling chamber opening. Ensure the hair is straight and not tangled.
- Press and hold the main curling button (often the same as the power button or a dedicated button, refer to device markings). The hair will be automatically drawn into the chamber.
- You will hear a series of beeps indicating the curling process. Once the set timer expires, the device will beep rapidly to signal completion.
- Release the curling button and gently pull the curler away from your head to release the curl.
- Repeat for all sections of hair.

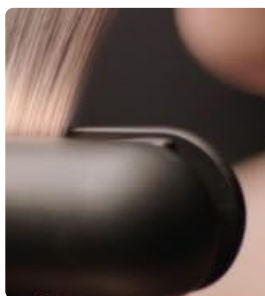


Image 5.1: Demonstrating the curling process and results.



Image 5.2: Detail of the hair curling mechanism.

### 5.4. Automatic Safety Shut-off

The device is equipped with an automatic safety shut-off feature. If left inactive for a certain period, it will automatically turn off to conserve battery and prevent overheating.

## 6. MAINTENANCE AND CLEANING

Proper maintenance ensures the longevity and performance of your EasyCurl.

- **Cleaning:** Ensure the device is switched off and completely cool before cleaning.
- Wipe the exterior with a soft, damp cloth. Do not use abrasive cleaners or solvents.
- Gently clean the curling chamber to remove any hair product residue. A small brush can be used if necessary.
- **Storage:** Store the curler in its provided storage pouch in a cool, dry place, away from direct sunlight and moisture.

## 7. TROUBLESHOOTING

If you encounter issues with your Grundig EasyCurl, refer to the following table:

Problem	Possible Cause	Solution
Device does not turn on.	Battery is depleted.	Charge the device fully (approx. 3 hours).
Hair gets tangled in the chamber.	Hair section is too large or not combed.	Use smaller, well-combed sections of hair. Ensure hair is straight before inserting.
Curls are not holding.	Temperature too low or timer too short.	Increase temperature or curling time. Ensure hair is completely dry.
Device not heating up.	Device not fully charged or malfunction.	Ensure full charge. If problem persists, contact customer support.

## 8. SPECIFICATIONS

Model Name:	HS 6230
Article Number:	GMS3980
Brand:	Grundig
Power Source:	Battery Powered (Li-ion)
Temperature Levels:	3 (160 °C / 180 °C / 200 °C)
Timer Settings:	3 to 15 seconds
Charging Time:	Approx. 3 hours
Operating Time (Battery):	Up to 40 minutes
Coating Material:	Ceramic
Display:	LCD
Dimensions (L x W x H):	35.6 x 4.5 x 4.5 cm (14 x 1.8 x 1.8 inches)
Weight:	450 grams (0.99 lbs)
Input Voltage:	100-240 V~
Input Frequency:	50/60 Hz
Input Current:	0.5 A
Output Voltage (USB):	5.0 V DC
Output Current (USB):	2.0 A
Output Power (USB):	10 W
Color:	Violet

## 9. WARRANTY AND SUPPORT

### 9.1. Warranty Information

The Grundig EasyCurl HS 6230 comes with a **3-year warranty**, ensuring high quality and reliability. Please retain your proof of purchase for warranty claims. The warranty covers manufacturing defects under normal use. It does not cover damage caused by misuse, accidents, unauthorized repairs, or normal wear and tear.

### 9.2. Customer Support

For technical assistance, troubleshooting beyond this manual, or warranty inquiries, please contact Grundig customer support. Refer to the Grundig official website for contact details specific to your region.

