

Manuals.plus /

› Wellshave /

› Wellshave 5-in-1 Professional Multi-function Trimmer User Manual

Wellshave WS-BTG

Wellshave 5-in-1 Professional Multi-function Trimmer User Manual

Model: WS-BTG

INTRODUCTION

Thank you for choosing the Wellshave 5-in-1 Professional Multi-function Trimmer. This versatile grooming kit is designed to meet all your beard, hair, and body grooming needs with precision and ease. Please read this manual thoroughly before first use to ensure safe and optimal performance of your device.



Image: The Wellshave 5-in-1 Men Shaper, highlighting its multi-functionality for beard and body trimming.

IMPORTANT SAFETY INFORMATION

To reduce the risk of electric shock, injury, or fire, always follow these basic safety precautions:

- Do not use the appliance near water, such as in a bathtub, shower, or sink.
- Do not leave the appliance charging unattended.

- Be aware of potential hazards related to trimming facial, body, and nose hair.
- Read the user manual completely before the first use.
- Keep the appliance out of reach of children.
- Only use the charger supplied with the appliance.
- Do not use the appliance if it is damaged.

PACKAGE CONTENTS

Your Wellshave 5-in-1 Professional Multi-function Trimmer kit includes the following items:

- Main Trimmer Unit
- Full-size Trimmer Head (for large areas, beard, and head)
- Precision Trimmer Head (for small areas and detailing)
- Body Groomer Head
- Nose/Ear Trimmer Head
- Adjustable Guide Comb (1-9mm)
- Fixed Guide Combs (3mm, 6mm, 9mm, 12mm)
- USB Charging Cable (Micro-USB)
- Cleaning Brush
- Lubricating Oil
- Storage Stand
- Travel Pouch



Image: The complete Wellshave 5-in-1 Trimmer kit, showcasing the main unit, various heads, guide combs, charging cable, cleaning brush, oil, and storage stand.



Image: Illustration of the Wellshave 5-in-1 Trimmer and its various accessories, emphasizing its versatility for grooming.

SETUP

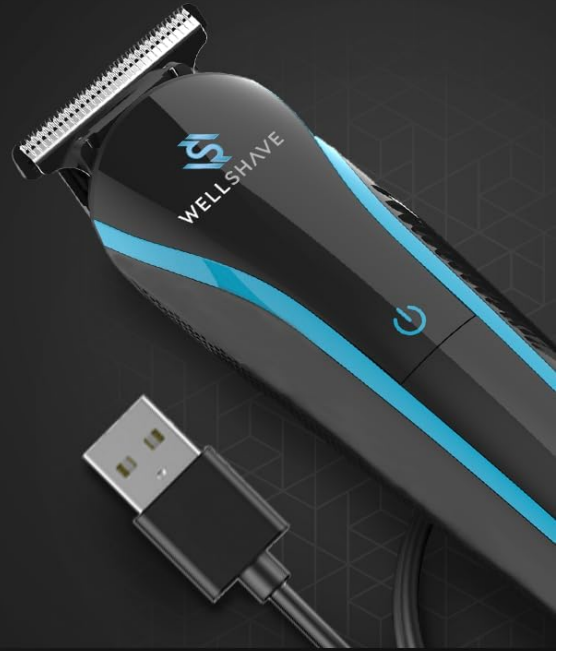
Charging the Trimmer

Before first use, fully charge the trimmer. Connect the USB charging cable to the trimmer and a suitable USB power source (e.g., computer, wall adapter). A full charge takes approximately 3 hours and provides up to 120 minutes of cordless use.



Rechargeable par USB

- ⚡ Charge de 3 heures
- ▶ Utilisation pendant 1 heure



Spatwaterdicht

Geschikt om in je badkamer te gebruiken

Image: The Wellshave trimmer connected via USB for charging, indicating its rechargeable and splash-proof features.

Attaching and Detaching Trimmer Heads

To attach a trimmer head, align the head with the main unit and press firmly until it clicks into place. To detach, gently pull the head away from the main unit. Ensure the trimmer is turned off before changing heads.

OPERATING INSTRUCTIONS

The Wellshave 5-in-1 Trimmer offers versatile grooming options. Always ensure your skin is clean and dry before use.

Using the Full-size Trimmer and Precision Trimmer

These heads are ideal for shaping beards, trimming hair, and creating clean lines. For different lengths, attach one of the guide combs. The adjustable comb allows for lengths from 1mm to 9mm in 0.5mm increments. The fixed combs provide specific lengths (3mm, 6mm, 9mm, 12mm).

- **For Beard Trimming:** Select the desired guide comb. Move the trimmer against the direction of hair growth for an even trim. For detailing and sharp lines, remove the comb and use the blade directly.

- **For Hair Trimming:** Use the full-size trimmer with a suitable guide comb. Work in sections, moving the trimmer slowly and steadily.



1 à 9 millimètres

Réglable

Réglable par incréments de 0,5 mm.

Parfait pour créer
différents styles et

Image: A hand adjusting the 1-9mm adjustable guide comb on the Wellshave trimmer, demonstrating its customizable length settings.

Longueur réglable

Via de meegeleverde opzetkammen

3 mm



6 mm



9 mm



12 mm

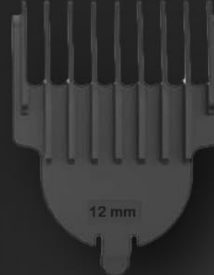


Image: Visual representation of beard lengths achievable with 3mm, 6mm, 9mm, and 12mm fixed guide combs.



Une nouvelle façon de se raser

De toilettage avec une tondeuse à barbe tondeuse à barbe tout-en-un.

Le luxe à chaque rasage

Finition élégante et haut de gamme avec une prise en main confortable.



Image: A man using the Wellshave trimmer on his beard, illustrating a comfortable and precise grooming experience.

Using the Body Groomer

The body groomer attachment is designed for safe and comfortable trimming of body hair. It captures even the shortest hairs and adapts effortlessly to all skin types.

- Attach the body groomer head.
- Move the trimmer gently over the desired areas of the body.



Toiletteur corporel

Élégant et frais

Attrape même les poils les plus courts.

S'adapte sans effort à tout type de peau

Image: A man using the Wellshave body groomer on his underarm, demonstrating its effectiveness for body hair removal.

Using the Nose/Ear Trimmer

The nose/ear trimmer head is specifically designed for safely removing unwanted hair from the nose and ears.

- Attach the nose/ear trimmer head.
- Gently insert the tip into the nostril or ear canal and move it in a circular motion. Do not insert too deeply.

5 Opzetstukken

Overal voor te gebruiken



1 lame en
T grandes surfaces



2 Tondeuse standard
Barbe et tête



3 Tondeuse de précision
Petites surfaces



4 Toilettage
complet du corps et barbe



5 Tondeuse à nez
Poils de nez



Image: An overview of the 5 different attachment heads for the Wellshave trimmer, showing their specific uses for large surfaces, standard trimming, precision, body grooming, and nose hair.



Prêt pour le toilettage du corps

L'accessoire bodygroomer permet de prendre soin de tout le corps.

Tondeuse nez et oreilles

Toilettage complet du visage grâce à la tondeuse intégrée.

Image: A split image showing a man using the body groomer and the nose/ear trimmer, highlighting the versatility for full body and facial grooming.

MAINTENANCE

Regular cleaning and maintenance will prolong the life of your trimmer and ensure optimal performance.

Cleaning

After each use, turn off the trimmer and detach the head. Use the provided cleaning brush to remove any hair clippings from the blades and the trimmer body. The trimmer heads are splash-proof and can be rinsed under running water for easy cleaning. Ensure the heads are completely dry before reattaching or storing.

Lubrication

To maintain the sharpness and smooth operation of the blades, apply a few drops of the lubricating oil to the blades after every few uses, or as needed. Turn on the trimmer for a few seconds to distribute the oil evenly.



Image: A split image showing the process of oiling the trimmer blades to increase lifespan and rinsing the trimmer head under water for easy cleaning.

Storage

Store the trimmer and its accessories in the provided storage stand or travel pouch in a dry place, away from direct sunlight and extreme temperatures.

TROUBLESHOOTING

Problem	Possible Cause	Solution
Trimmer does not turn on.	Battery is low or depleted.	Charge the trimmer fully.
Trimmer pulls hair or cuts unevenly.	Blades are dull or clogged with hair.	Clean the blades thoroughly and apply lubricating oil. Ensure the correct guide comb is used.
Trimmer head is difficult to attach/detach.	Incorrect alignment or debris.	Ensure proper alignment and remove any debris. Apply gentle but firm pressure.
Reduced motor performance.	Low battery or excessive hair buildup.	Recharge the trimmer. Clean the trimmer head and motor area.

SPECIFICATIONS

- **Model Number:** WS-BTG
- **Brand:** Wellshave
- **Dimensions:** 16 x 3.5 x 3 cm
- **Weight:** 510 grams
- **Power Source:** Battery Powered (Rechargeable via USB)
- **Blade Material:** Stainless Steel
- **Special Features:** Ergonomic, Rechargeable, Multi-groomer, Splash-proof
- **Recommended Uses:** Ear, Face, Armpit, Beard, Body
- **Color:** Black



Image: Illustrates the powerful performance of the trimmer's high-speed motor and the convenience of 90 minutes of cordless use.

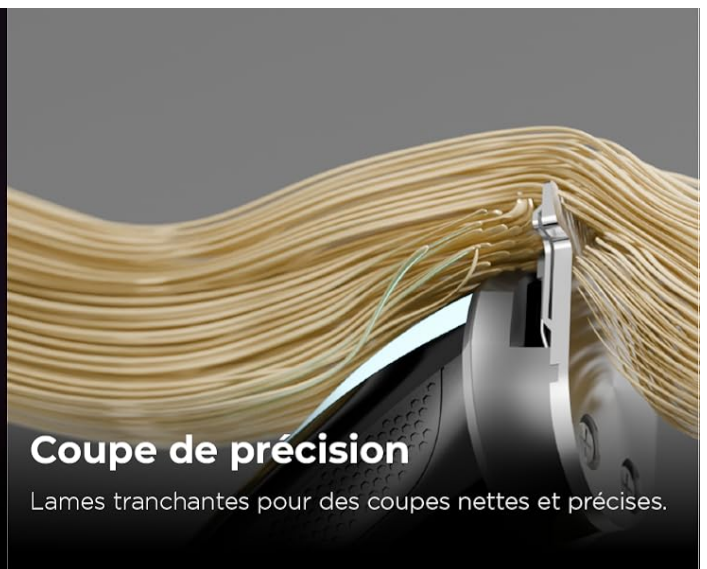


Image: Details the high-end construction with durable stainless steel and the precision cutting capability of the sharp blades.

WARRANTY AND SUPPORT

Wellshave products are manufactured to high-quality standards. For any questions, concerns, or warranty claims, please contact Wellshave customer support through the retailer's platform or the official Wellshave website. Please retain your proof of purchase

for warranty purposes.