

## Schwinn Meridian

# Schwinn Meridian Adult Tricycle Bike User Manual

Model: Meridian

## INTRODUCTION

Welcome to the Schwinn Meridian Adult Tricycle Bike user manual. This guide provides essential information for the safe assembly, operation, maintenance, and troubleshooting of your new tricycle. Please read this manual thoroughly before using your tricycle to ensure a safe and enjoyable riding experience.

The Schwinn Meridian tricycle is designed for adults seeking a stable and comfortable riding experience. It features a low step-through aluminum frame, a single-speed drivetrain, and a convenient rear folding basket.



Image: Schwinn Meridian Adult Tricycle. This image shows the overall design of the tricycle, highlighting its three-wheel structure and the rear basket.

## SAFETY INFORMATION

Your safety is paramount. Always adhere to the following safety guidelines:

- Always wear a helmet that meets safety standards.
- Ensure all bolts, nuts, and quick releases are securely tightened before each ride.
- Check tire pressure before each ride.
- Test brakes before riding to ensure they are functioning correctly.
- Be aware of your surroundings and obey all traffic laws.
- Do not carry passengers, children, or pets in the rear basket. The basket is for cargo only.
- Avoid riding at night without proper lighting and reflectors.
- Do not exceed the maximum weight capacity specified for the tricycle and basket.

## SETUP

### 1. Unpacking and Inspection

Carefully remove all components from the packaging. Inspect for any damage during shipping. Retain all packaging

materials until assembly is complete.

## 2. Frame Assembly

The Meridian features a low step-through aluminum frame. Ensure the frame is stable before attaching other components.

## 3. Wheel Installation

Attach the front wheel and the two rear wheels according to the instructions provided in the separate assembly guide. Ensure all wheel nuts are securely tightened.

## 4. Handlebar and Seat Adjustment

- **Handlebars:** Adjust the handlebars to a comfortable height and angle, ensuring they are aligned with the front wheel. Tighten the stem bolts securely.
- **Seat:** Insert the seat post into the frame and adjust the seat height so your feet can comfortably touch the ground while seated. The large cruiser dual spring saddle is designed for comfort. Secure the quick-release lever or seat post bolt.

## 5. Brake System Setup

Connect the front linear pull brake and the rear drum brake cables. Adjust the brake levers for comfortable reach and ensure proper brake pad/shoe engagement. Refer to the detailed brake adjustment section in the full assembly manual.

## 6. Rear Folding Basket Installation

Attach the rear folding basket to the designated mounting points on the tricycle frame. Ensure it is securely fastened and can fold and unfold smoothly. Verify that the basket does not interfere with the rear wheels or braking system.

## 7. Tire Inflation

Inflate all three tires to the recommended pressure indicated on the tire sidewall. Use a pump with a pressure gauge to ensure accurate inflation.

# OPERATING

---

## 1. Riding Basics

The Schwinn Meridian tricycle offers enhanced stability compared to a two-wheeled bicycle. Mount the tricycle using the low step-through frame. Begin pedaling gently. Due to its three-wheel design, cornering requires a different technique than a bicycle; lean slightly into turns and maintain a controlled speed.

## 2. Braking System

Your tricycle is equipped with a front linear pull brake and a rear drum brake. Apply both brakes simultaneously and smoothly to slow down or stop. Avoid sudden, hard braking, especially with the front brake only, as this can cause instability.

## 3. Single-Speed Drivetrain

The tricycle features a simple single-speed drivetrain, ideal for flat to gently rolling terrain. There are no gears to shift, making operation straightforward. Maintain a comfortable pedaling cadence.

## 4. Using the Rear Folding Basket

The rear folding basket provides ample storage for groceries, bags, or other cargo. To use, unfold the basket and ensure it is locked into position. To fold, release the locking mechanism and collapse the basket. Always distribute weight evenly in the basket and avoid overloading it. Remember, the basket is not suitable for carrying children, pets, or other passengers.

## MAINTENANCE

Regular maintenance ensures the longevity and safe operation of your Schwinn Meridian tricycle.

- **Cleaning:** Clean the frame and components regularly with a mild soap and water solution. Avoid high-pressure washing, which can damage bearings.
- **Tire Care:** Check tire pressure weekly and inflate to the recommended PSI. Inspect tires for wear, cuts, or embedded debris.
- **Brake Inspection:** Regularly check brake levers for proper tension and brake pads/shoes for wear. Adjust or replace as necessary. Ensure brake cables are free of fraying or corrosion.
- **Chain Lubrication:** Lubricate the chain every few weeks, or more often if riding in wet or dusty conditions. Use a bicycle-specific chain lubricant.
- **General Inspection:** Periodically check all nuts, bolts, and fasteners for tightness. Inspect the frame for any cracks or damage.

## TROUBLESHOOTING

This section addresses common issues you might encounter with your tricycle.

Problem	Possible Cause	Solution
Brakes feel spongy or ineffective	Loose brake cable, worn brake pads/shoes, air in hydraulic system (if applicable)	Tighten brake cable, replace worn pads/shoes, consult a bike mechanic for hydraulic systems.
Tires lose air quickly	Puncture, leaky valve stem, improper seating of tire bead	Inspect tire for punctures and repair/replace tube, check valve stem, re-seat tire bead.
Steering feels loose or wobbly	Loose headset, loose handlebar stem bolts	Tighten headset adjustment, ensure handlebar stem bolts are secure.
Pedaling feels difficult or noisy	Dry chain, loose crank arm, worn bottom bracket	Lubricate chain, tighten crank arm bolts, consult a bike mechanic for bottom bracket issues.

## SPECIFICATIONS

Below are the key specifications for the Schwinn Meridian Adult Tricycle Bike:

- **Bike Type:** Cruiser Bike, Folding Bike
- **Age Range (Description):** Adult
- **Brand:** Schwinn
- **Number of Speeds:** 1
- **Wheel Size:** 26 Inches
- **Frame Material:** Aluminum
- **Suspension Type:** Front, Rear
- **Special Feature:** Aluminum Frame, Basket
- **Included Components:** Basket
- **Brake Style:** Linear Pull (Front), Drum (Rear)
- **Model Name:** Meridian
- **ASIN:** B0BSSNFJRV

- **Date First Available:** January 23, 2023

## WARRANTY AND SUPPORT


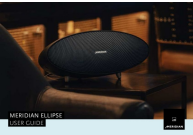



For detailed warranty information regarding your Schwinn Meridian Adult Tricycle Bike, please refer to the warranty card included with your purchase or visit the official Schwinn website. Warranty terms and conditions may vary.


If you require technical assistance, have questions about assembly, or need to order replacement parts, please contact Schwinn customer support. Contact information can typically be found on the Schwinn website or in the documentation provided with your tricycle.



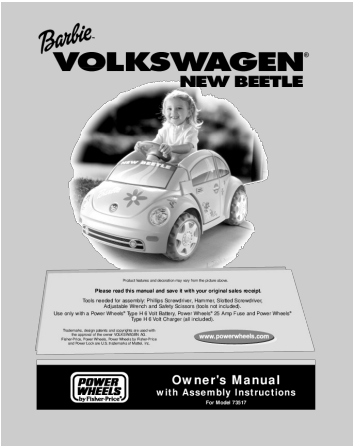
© 2023 Schwinn. All rights reserved.

### Related Documents - Meridian

 Preferred Drug List	<a href="#">Meridian Medicaid Plan Preferred Drug List - Medication Guide</a> A comprehensive preferred drug list (PDL) from Meridian Medicaid Plan, detailing covered medications, prior authorization requirements, quantity limits, and other important criteria for providers and patients. Updated April 1, 2022.
	<a href="#">Meridian Ellipse User Guide: High-Performance Wireless Streaming Speaker</a> Explore the Meridian Ellipse, a premium all-in-one wireless streaming speaker. This user guide covers setup, features, controls, network connectivity, app integration, and specifications for optimal audio performance.
	<a href="#">Meridian Indoor Solutions Manual: Kiosk Installation and User Guide</a> Comprehensive user manual for Meridian Indoor Solutions Kiosk models, covering installation, safety, power, maintenance, and support. Learn how to set up and care for your Meridian kiosk.
	<a href="#">Meridian System Remote (MSR+) User Guide</a> Comprehensive user guide for the Meridian System Remote (MSR+), an advanced remote control for Meridian audio and video systems. Learn about features, battery installation, programming for other devices, and troubleshooting tips.
	<a href="#">Meridian Locker System Admin Instructions</a> Step-by-step guide for administrators on accessing and managing Meridian Locker Systems, including login procedures, system maintenance, file explorer navigation, and returning to the default browser interface.

 <p>Preferred Drug List</p>	<p><a href="#">Meridian Medicaid Plan Preferred Drug List</a></p> <p>A comprehensive guide to the Meridian Medicaid Plan's Preferred Drug List (PDL), detailing covered medications, prior authorization requirements, quantity limits, and formulary information for healthcare providers and pharmacists.</p>
--	---

Documents - Schwinn – Meridian



[\[pdf\]](#) User Manual Owner's Manual Instructions

Owner s Manual 73517a 0920 service mattel instruction sheets  
 Product features and decoration may vary from the picture above. Please read this manual and save i ... Calhoun Street, 46807, 219 745-7788, 888 209-8113  
 INDIANAPOLIS - Brand Service Center, 1827 N. **Meridian** Street, 46202, 317 924-1386 INDIANAPOLIS - Sullivan Hardware Do-It Center, 7021 N. Keysto...  
 lang:en score:31 filesize: 1.74 M page\_count: 36 document date: 2002-10-28



[\[pdf\]](#) User Manual Owner's Manual Instructions

74350pr 0921 Product Art 30 Owner s Manual with Assembly Instructions Service Mattel on page 8 for detailed instructions tion and operating before using your vehicle wilmington Lyons Hardware Inc 2021 Kirkwood Highway service mattel instruction sheets  
 74350pr-0921 7/27/0 4:45 PM Page 1 Product features may vary from the picture above. JEEP and the Je ... Sales, 3523 N. Anthony Blvd., 46805, 219 482-1702  
 INDIANAPOLIS - Brand Service Center, 1827 N. **Meridian** Street, 46202, 317 924-1386 INDIANAPOLIS - Sullivan Hardware Do-It Center, 7021 N. Keysto...  
 lang:en score:29 filesize: 2.67 M page\_count: 28 document date: 2000-07-27



[\[pdf\]](#) User Manual Owner's Manual Instructions

Owner s Manual with Assembly Instructions Service Mattel Please read this manual and save it your original sales receipt For Model 74270 WILMINGTON Lyons Hardware Do It Center 2021 Kirkwood Highway 0921 service mattel instruction sheets  
 Product features and decoration may vary from the picture above. JEEP and the Jeep grille design are ... 3 IUKA - W. H. Fairless Hardware Co. Inc., 117 Fulton Street, 38852, 601 423-2233, 800 797-9457 **MERIDIAN** - Broadmoor Home Center, 2420 Old North Hills Street, 39305, 601 483-7373 RIDGELAND - Pro...  
 lang:en score:28 filesize: 2.59 M page\_count: 40 document date: 2000-09-15



#### [\[pdf\]](#) User Manual Owner's Manual Instructions

Owner s Manual with Assembly Instructions Service Mattel Warnings and Cautions information operating instructions before using Read the safety on battery WILMINGTON Lyons Hardware Inc 2021 Kirkwood manual teach your child about proper vehicle operation rules for safe driving allowing operation of this For reasons has been 775598pr 0920 service mattel instruction sheets Product features and decoration may vary from the picture above. JEEP and the Jeep grille design are ... Calhoun Street, 46807, 219 745-7788, 888 209-8113 INDIANAPOLIS - Brand Service Center, 1827 N. **Meridian** Street, 46202, 317 924-1386 INDIANAPOLIS - Sullivan Hardware Do-It Center, 7021 N. Keysto... lang:en **score:28** filesize: 2.47 M page\_count: 36 document date: 2001-01-29



#### [\[pdf\]](#) User Manual Owner's Manual

MERIDIAN OWNER 39 S MANUAL comprehensive manual covering all aspects concerning bicycle ownership We recommend consulting a specialist if you have any doubts or concerns regarding your experience ability to properly assemble and maintain the tricycle Our customer service department is dedicated C1AbmfJQweS images na ssl amazon I **MERIDIAN OWNER S MANUAL THIS MANUAL CONTAINS IMPORTANT SAFETY, PERFORMANCE AND MAINTENANCE INFORMATION. READ THE MANUAL BEFORE TAKING YOUR FIRST RIDE ON YOUR TRICYCLE, AND KEEP THE MANUAL HANDY FOR FUTURE REFERENCE.** To register your bike visit [www.schwinnbikes.com/registerbike](http://www.schwinnbikes.com/registerbike) Schwinn **Meridian** Man... lang:en **score:28** filesize: 4.51 M page\_count: 54 document date: 2012-09-18



#### [\[pdf\]](#) User Manual Owner's Manual Instructions

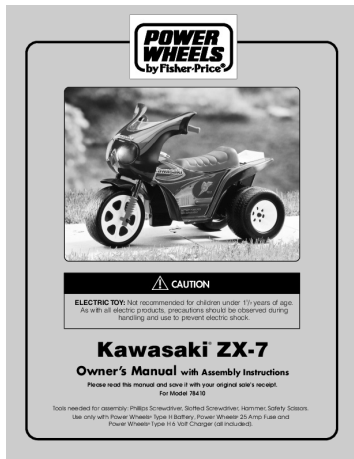
76980 PW Barbie Toddler Quad Service Mattel Songbird Please read this manual and save it with your original sale s receipt For Model WILMINGTON Lyons Hardware Inc 2021 Kirkwood Highway 19805 Owner Manual Assembly Instructions Tools needed for assembly Throughout you will find important messages in the form of WARNINGS Carefully safety information operating instructions 76980pr 0920 service mattel instruction sheets TM Product features may vary from the picture above. Songbird ATV Owner s Manual with Assembly Instr ... Sales, 3523 N. Anthony Blvd., 46805, 219 482-1702 INDIANAPOLIS - Brand Service Center, 1827 N. **Meridian** Street, 46202, 317 924-1386 INDIANAPOLIS - Sullivan Hardware Do-It Center, 7021 N. Keysto... lang:en **score:28** filesize: 1.03 M page\_count: 36 document date: 2000-01-04



#### [\[pdf\]](#) User Manual Owner's Manual Instructions

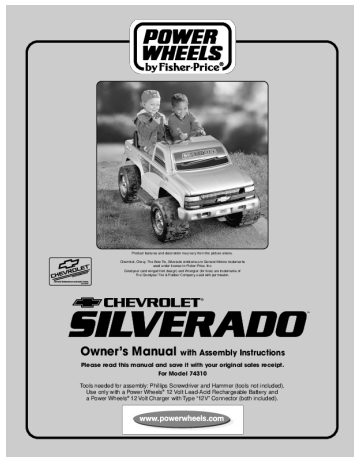
78477 1US Barbie Ranger1 36 JIRAKJAN Appliance Factory Parts Owner s Manual with Assembly Instructions Please read information and operating instructions before using 2020 W Superior St 55806 218 722 9063 78477pr 0920 service mattel instruction sheets Product features and decoration may vary from the picture above. TM TM Owner s Manual with Assembly ... Sales, 3523 N. Anthony Blvd., 46805, 219 482-1702 INDIANAPOLIS - Brand Service Center, 1827 N. **Meridian** Street, 46202, 317 924-1386 INDIANAPOLIS - Sullivan Hardware Do-It Center, 7021 N. Keysto... lang:en **score:28** filesize: 2.91 M page\_count: 36 document date: 1999-08-24





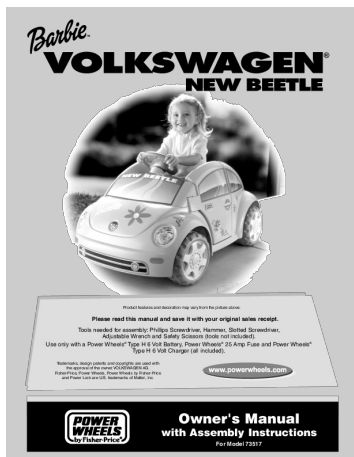
[\[pdf\]](#) User Manual Owner's Manual Instructions

Kawasaki® ZX 7 Appliance Factory Parts Kawasaki Please read this manual and save it with your original sale s receipt For Model 78410 WILMINGTON Lyons Hardware Inc 2021 Kirkwood Highway 19805 ® Owner Manual Assembly Instructions Tools needed for assembly Phillips Screwdriver Slotted Hammer Safety Scissors 78410pr 0920 service mattel instruction sheets CAUTION ELECTRIC TOY: Not recommended for children under 1 1/2 years of age. As with all electric pro ... , Inc., 6347 Indianapolis Blvd., 46320, 219 844-0920 INDIANAPOLIS - Brand Service Center, 1827 N. **Meridian** Street, 46202, 317 924-1386 INDIANAPOLIS - Sullivan Hardware Do-It Center, 7021 N. Keysto... lang:en **score:28** filesize: 1.33 M page\_count: 38 document date: 2000-01-04



[\[pdf\]](#) User Manual Owner's Manual Instructions

Owner s Manual Mattel Read this manual carefully for important safety information and operating instructions before using your vehicle Keep these future reference as they contain This is designed use on grass asphalt or other hard surfaces generally level terrain by children 3 years of age older 74310a 0921 service mattel instruction sheets IDFP0899 Product features and decoration may vary from the picture above. Chevrolet, Chevy, The Bow ... Calhoun Street, 46807, 219 745-7788, 888 209-8113 INDIANAPOLIS - Brand Service Center, 1827 N. **Meridian** Street, 46202, 317 924-1386 INDIANAPOLIS - Sullivan Hardware Do-It Center, 7021 N. Keysto... lang:en **score:27** filesize: 1.59 M page\_count: 32 document date: 2001-01-10

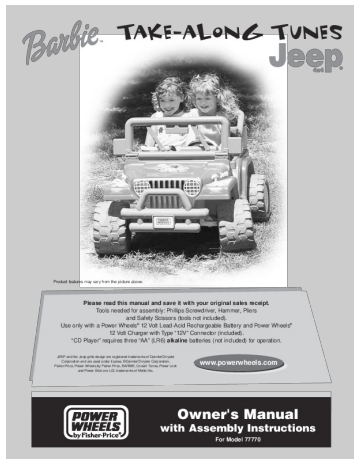


[\[pdf\]](#) User Manual Owner's Manual Instructions

Owner s Manual Service Mattel Inc with Assembly Please read this manual and save it your original sales receipt WILMINGTON Lyons Hardware 2021 Kirkwood these instructions for future reference as they contain Read the safety on battery 177322b5 de25 4fab b575 78f4b7cd627f 73517pr 0920 stream manualonline 1 service mattel instruction sheets Product features and decoration may vary from the picture above. Please read this manual and save i ... Calhoun Street, 46807, 219 745-7788, 888 209-8113 INDIANAPOLIS - Brand Service Center, 1827 N. **Meridian** Street, 46202, 317 924-1386 INDIANAPOLIS - Sullivan Hardware Do-It Center, 7021 N. Keysto... lang:en **score:27** filesize: 1.88 M page\_count: 36 document date: 2001-06-05







[\[pdf\]](#) User Manual Owner's Manual Instructions Guide

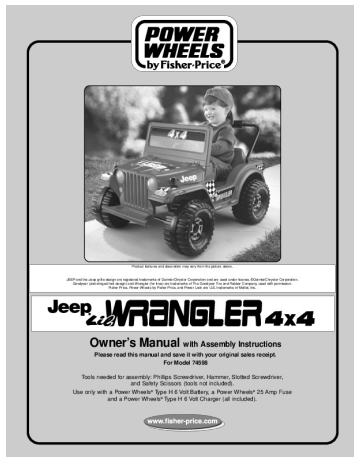
Fisher 77770 Baby Carrier User Manual Guide ManualsOnline 6c9de504 8bf6 472a 94ae 9f8e220538b1 dl owneriq net 6 |||

Product features may vary from the picture above. Please read this manual and save it with your ori ... Calhoun Street, 46807, 260 745-7788, 888 209-8113

INDIANAPOLIS - Brand Service Center, 1827 N. **Meridian** Street, 46202, 317 924-

1386 INDIANAPOLIS - Sullivan Hardware Do-It Center, 7021 N. Keysto...

lang:en score:27 filesize: 1.93 M page\_count: 0 document date: 0000-00-00



[\[pdf\]](#) User Manual Owner's Manual Instructions

Owner s Manual with Assembly Instructions Service Mattel Table of Please read this manual and save it your original sales receipt For Model 74598 Product features Read carefully for important safety informa

tion operating instructions before using vehicle keep future reference as contains information This is designed use on asphalt other hard surfaces generally level terrain by children 11 2 4 years age 74598a

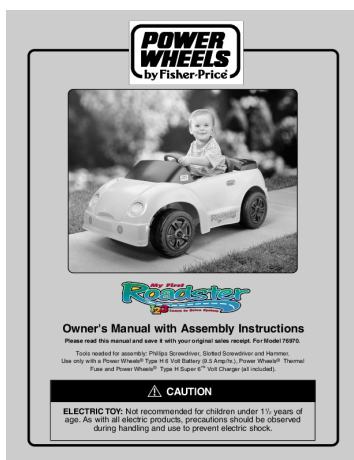
0921 service mattel instruction sheets

Product features and decoration may vary from the picture above. JEEP and the Jeep grille design are ... Calhoun Street, 46807, 219 745-7788, 888 209-8113

INDIANAPOLIS - Brand Service Center, 1827 N. **Meridian** Street, 46202, 317 924-

1386 INDIANAPOLIS - Sullivan Hardware Do-It Center, 7021 N. Keysto...

lang:en score:27 filesize: 1.6 M page\_count: 28 document date: 2001-03-20



[\[pdf\]](#) User Manual Owner's Manual Instructions Diagram

Owner s Manual with Assembly Instructions Service Mattel Fuse and Power Wheels® Type H Super 6™ Volt Charger all included Please read this manual save it your original sales receipt For Model 76970

Tools needed for assembly Phillips Screwdriver Slotted Hammer section beginning on page 8 detailed instructions a4b9d57c 0790 4792 bc22 7e34b6432641 76970pr 0920 189903 1 stream manualsonline a service mattel instruction sheets appliancefactoryparts content

Owner s Manual with Assembly Instructions Please read this manual and save it with your original sal ... Sales, 3523 N. Anthony Blvd., 46805, 219 482-1702

INDIANAPOLIS - Brand Service Center, 1827 N. **Meridian** Street, 46202, 317 924-

1386 INDIANAPOLIS - Sullivan Hardware Do-It Center, 7021 N. Keysto...

lang:en score:27 filesize: 1.64 M page\_count: 32 document date: 2000-01-04



### [\[pdf\]](#) User Manual Owner's Manual Instructions

Owner s Manual Mattel Read this manual carefully for important safety information and operating instructions before using your vehicle Keep these future reference as they contain This is designed use on grass asphalt or other hard surfaces hills flat terrain by children 3 years of age older 74340pr 0920 service mattel instruction sheets

Product features and decoration may vary from the picture above. JEEP and the Jeep grille design are ... 3 IUKA - W. H. Fairless Hardware Co. Inc., 117 Fulton Street, 38852, 601 423-2233, 800 797-9457 **MERIDIAN** - Broadmoor Home Center, 2420 Old North Hills Street, 39305, 601 483-7373 RIDGELAND - Pro...

lang:en score:26 filesize: 2.12 M page\_count: 32 document date: 1999-11-08

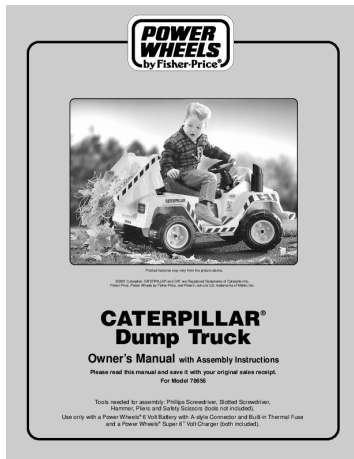


### [\[pdf\]](#) User Manual Owner's Manual Instructions Warranty

75547pr 0921 qrk Product Art 30 Owner s Manual with Assembly Instructions Service Mattel tion and operating instructions before using your vehicle Read the safety on battery WILMINGTON Lyons Hardware Do It Center 2021 Examine charger their Failure to follow these may damage will void warranty service mattel instruction sheets

Product features may vary from the picture above. Ford, F-150 and associated trademarks used under I ... 3 IUKA - W. H. Fairless Hardware Co. Inc., 117 Fulton Street, 38852, 601 423-2233, 800 797-9457 **MERIDIAN** - Broadmoor Home Center, 2420 Old North Hills Street, 39305, 601 483-7373 RIDGELAND - Pro...

lang:en score:26 filesize: 1.16 M page\_count: 27 document date: 2000-08-09



[\[pdf\]](#) User Manual Owner's Manual Instructions Diagram

CATERPILLAR® Dump Truck Service Mattel CATERPILLAR Owner s Manual with Assembly Instructions

Please read this manual and save it your original sales receipt 9061 Miller Road 48473 810 635 2020

Read carefully for important safety information operating instructions before using vehicle Keep the future

reference as they contain This is designed use on grass asphalt or other hard surfaces generally level

terrain by children 2 6 years of age 78656c 0922 service mattel instruction sheets

Product features may vary from the picture above. 2001 Caterpillar. CATERPILLAR

and CAT are Register ... Calhoun Street, 46807, 219 745-7788, 888 209-8113

INDIANAPOLIS - Brand Service Center, 1827 N. **Meridian** Street, 46202, 317 924-

1386 INDIANAPOLIS - Sullivan Hardware Do-It Center, 7021 N. Keysto...

lang:en score:26 filesize: 1.12 M page\_count: 32 document date: 2001-01-19



[\[pdf\]](#) User Manual Owner's Manual Instructions

Owner s Manual Appliance Factory Parts 39 Mattel tion and operating instructions before using your

vehicle Please keep Read the safety on battery 9061 Miller Road 48473 810 635 2020 with Assembly

Instructions For Model B1503 Product features may vary from picture above read this manual save it

original sales receipt Tools needed for assembly Phillips Screwdriver Hammer Slotted all not included

B1503pr 0920 service mattel instruction sheets

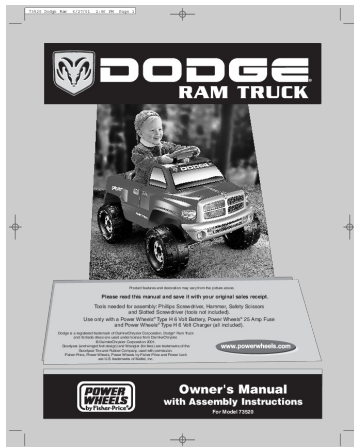
Product features may vary from the picture above. Please read this manual and save it

it with your ori ... Calhoun Street, 46807, 219 745-7788, 888 209-8113

INDIANAPOLIS - Brand Service Center, 1827 N. **Meridian** Street, 46202, 317 924-

1386 INDIANAPOLIS - Sullivan Hardware Do-It Center, 7021 N. Keysto...

lang:en score:26 filesize: 708.78 K page\_count: 32 document date: 2002-06-25



### [\[pdf\]](#) User Manual Owner's Manual Instructions

73520 Dodge Ram MKTG COMM 6 Mattel Owner 39 s Manual with Assembly Instructions For Model Product features and decoration may vary from the picture above Please read this manual save it your original sales receipt Tools needed for assembly Phillips Screwdriver Hammer Safety Scissors Slotted tools not included 73520pr 0920 service mattel instruction sheets

73520 Dodge Ram 6/27/01 2:56 PM Page 1 Product features and decoration may vary from the picture ab ... Calhoun Street, 46807, 219 745-7788, 888 209-8113 INDIANAPOLIS - Brand Service Center, 1827 N. **Meridian** Street, 46202, 317 924-1386 INDIANAPOLIS - Sullivan Hardware Do-It Center, 7021 N. Keysto... lang:en score:26 filesize: 3.3 M page\_count: 36 document date: 2001-06-27



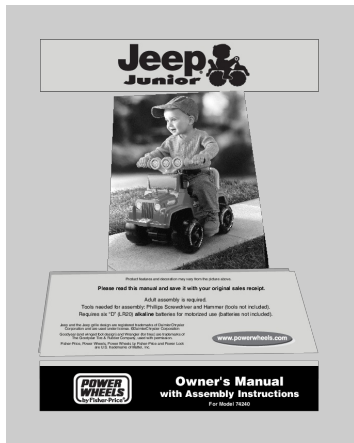
### [\[pdf\]](#) User Manual Owner's Manual Instructions

Owner s Manual with Assembly Instructions Service Mattel Warnings and Cautions Use only a Power Wheels® 6 Volt Battery A Style Connector Built in Thermal Fuse Super 6™ Charger both included Read this manual carefully for important safety information operating instructions before using your vehicle Keep future reference as it contains This is designed use on grass asphalt or other hard surfaces generally level terrain by children 3 years of age 78473a 0921 service mattel instruction sheets TM Product features may vary from the picture above. Kawasaki and Mojave are U.S. trademarks owned ... Calhoun Street, 46807, 219 745-7788, 888 209-8113 INDIANAPOLIS - Brand Service Center, 1827 N. **Meridian** Street, 46202, 317 924-1386 INDIANAPOLIS - Sullivan Hardware Do-It Center, 7021 N. Keysto... lang:en score:26 filesize: 1.13 M page\_count: 32 document date: 2001-01-10



### [\[pdf\]](#) User Manual Owner's Manual Instructions

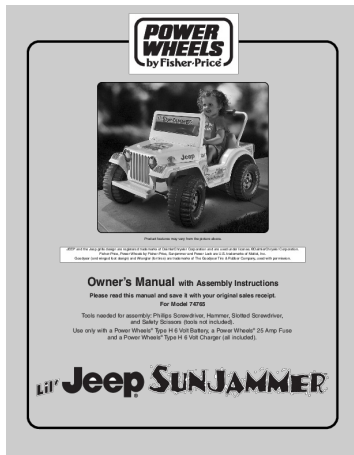
Owner s Manual with Assembly Instructions Mattel Service Warnings and Cautions on page 8 for detailed instructions tion operating before using your vehicle WILMINGTON Lyons Hardware Inc 2021 Kirkwood Highway Please keep this manual future reference as it contains important information This is designed use grass asphalt other hard surfaces generally level terrain by children 11 2 4 years of age Make sure know follow these rules safe Read carefully safety informa 74350a 0921 service mattel instruction sheets Product features may vary from the picture above. JEEP and the Jeep grille design are registered tra ... Calhoun Street, 46807, 219 745-7788, 888 209-8113 INDIANAPOLIS - Brand Service Center, 1827 N. **Meridian** Street, 46202, 317 924-1386 INDIANAPOLIS - Sullivan Hardware Do-It Center, 7021 N. Keysto... lang:en score:26 filesize: 1.52 M page\_count: 32 document date: 2001-01-05



[\[pdf\]](#) User Manual Owner's Manual Instructions

74240b 0920 pgs 1 5 Creative Service 27 Owner s Manual Mattel Please read this manual and save it with your original sales receipt Adult assembly is required Tools needed for Phillips Screwdriver Hammer tools not included service mattel instruction sheets

Product features and decoration may vary from the picture above. Please read this manual and save it ... Calhoun Street, 46807, 219 745-7788, 888 209-8113  
 INDIANAPOLIS - Brand Service Center, 1827 N. **Meridian** Street, 46202, 317 924-1386 INDIANAPOLIS - Sullivan Hardware Do-It Center, 7021 N. Keysto...  
 lang:en **score:26** filesize: 1.87 M page\_count: 20 document date: 2002-10-30



[\[pdf\]](#) User Manual Owner's Manual Instructions

74765pr 0920 Product Art 30 Owner s Manual with Assembly Instructions Appliance Mattel on page 8 for detailed instructions tion and operating before using your vehicle wilmington Lyons Hardware Inc 2021 Kirkwood Highway Read this manual carefully important safety informa Please keep future reference as it contains information This is designed use grass asphalt other hard surfaces generally level terrain by chil dren 11 2 4 years of age 6838a6d8 e7de 40c3 94d2 cf5b683d88a9 stream manualsonline 6 service mattel instruction sheets

Product features may vary from the picture above. JEEP and the Jeep grille design are registered tra ... Sales, 3523 N. Anthony Blvd., 46805, 219 482-1702  
 INDIANAPOLIS - Brand Service Center, 1827 N. **Meridian** Street, 46202, 317 924-1386 INDIANAPOLIS - Sullivan Hardware Do-It Center, 7021 N. Keysto...  
 lang:en **score:25** filesize: 2.02 M page\_count: 28 document date: 2000-08-01



[\[pdf\]](#) User Manual Owner's Manual Instructions Diagram

B2008pr 0920 ortizdav Owner s Manual Appliance Factory Parts with Assembly Please read this manual and save it your original sales receipt WILMINGTON Lyons Hardware Inc 2021 Kirkwood service mattel instruction sheets

Product features may vary from the picture above. Please read this manual and save it with your orig ... Calhoun Street, 46807, 260 745-7788, 888 209-8113  
 INDIANAPOLIS - Brand Service Center, 1827 N. **Meridian** Street, 46202, 317 924-1386 INDIANAPOLIS - Sullivan Hardware Do-It Center, 7021 N. Keysto...  
 lang:en **score:25** filesize: 1.09 M page\_count: 28 document date: 2002-11-20





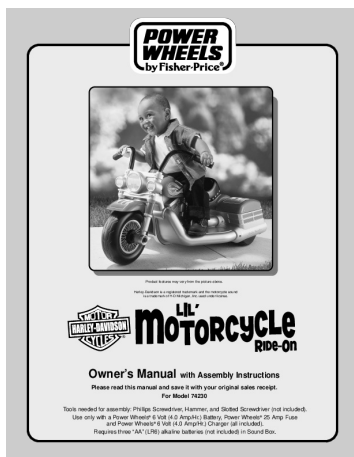
### [\[pdf\]](#) User Manual Owner's Manual Instructions

74240a 0920 pgs 1 5 MKTG COMM 6 Owner s Manual with Assembly Instructions Service Mattel 39 Please read this manual and save it your original sales receipt For Model 74240 WILMINGTON Lyons Hardware Inc 2021 Kirkwood Highway 19805 Requires six D LR20 alkaline batteries for motorized use not included information operating instructions before using vehicle Keep these future reference as they contain important This is designed on asphalt or other hard surfaces generally level terrain by children 12 to 36 months of age To prevent damaging the motors do tow anything service mattel instruction sheets Jeep and the Jeep grille design are registered trademarks of DaimlerChrysler Corporation and are use ... Calhoun Street, 46807, 219 745-7788, 888 209-8113 INDIANAPOLIS - Brand Service Center, 1827 N. **Meridian** Street, 46202, 317 924-1386 INDIANAPOLIS - Sullivan Hardware Do-It Center, 7021 N. Keysto... lang:en score:25 filesize: 1.9 M page\_count: 20 document date: 2001-03-20



### [\[pdf\]](#) User Manual Owner's Manual Instructions

B1501pr 0920 qrk ortizdav Owner s Manual Appliance Factory Parts Use only with a Power Wheels® 6 Volt Rechargeable Battery A Style Connector and Built in Thermal Fuse Super Charger both Assembly Instructions tion operating instructions before using your vehicle WILMINGTON Lyons Hardware Inc 2021 Kirkwood Please read this manual save it original sales receipt Tools needed for assembly Phillips Screwdriver Slotted Hammer 94c09da6 68af 4078 80c8 6c6ab620cda8 stream manualsonline 9 service mattel instruction sheets Product features may vary from the picture above. Please read this manual and save it with your orig ... Calhoun Street, 46807, 219 745-7788, 888 209-8113 INDIANAPOLIS - Brand Service Center, 1827 N. **Meridian** Street, 46202, 317 924-1386 INDIANAPOLIS - Sullivan Hardware Do-It Center, 7021 N. Keysto... lang:en score:25 filesize: 4.75 M page\_count: 32 document date: 2002-09-18



### [\[pdf\]](#) User Manual Owner's Manual Instructions Diagram

Owner s Manual with Assembly Instructions Mattel Inc Warnings and Cautions Tools needed for assembly Phillips Screwdriver Hammer Slotted not included Use only a Power Wheels® 6 Volt 4 0 Amp Hr Battery Please read this manual save it your original sales receipt For Model 74230 285d90db 55db 47a0 8916 9e8504ce0331 74230a 0920 stream manualsonline 2 service mattel instruction sheets Product features may vary from the picture above. Harley-Davidson is a registered trademark and the ... Calhoun Street, 46807, 219 745-7788, 888 209-8113 INDIANAPOLIS - Brand Service Center, 1827 N. **Meridian** Street, 46202, 317 924-1386 INDIANAPOLIS - Sullivan Hardware Do-It Center, 7021 N. Keysto... lang:en score:25 filesize: 772.79 K page\_count: 32 document date: 2001-03-20

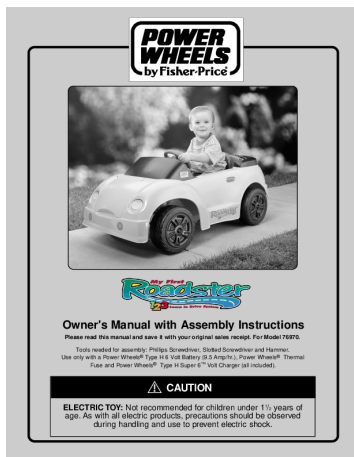




[\[pdf\]](#) User Manual Owner's Manual Instructions Diagram

Dream Carriage™ Service Mattel Carriage Please read this manual and save it with your original sales receipt ® Tools needed WILMINGTON Lyons Hardware Inc 2021 Kirkwood Highway 19805 Owner s Manual Assembly Instructions for assembly Phillips Screwdriver Hammer Pliers Safety Scissors tools not included 111cdd68 a9f3 4652 9a2c a88f00d15831 74260a 0920 stream manualsonline 1 service mattel instruction sheets

Dream Carriage™ For Model 74260 Product features and decoration may vary from the picture above. O ... Sales, 3523 N. Anthony Blvd., 46805, 219 482-1702 INDIANAPOLIS - Brand Service Center, 1827 N. **Meridian** Street, 46202, 317 924-1386 INDIANAPOLIS - Sullivan Hardware Do-It Center, 7021 N. Keysto... lang:en score:25 filesize: 1.46 M page\_count: 36 document date: 2000-11-06



[\[pdf\]](#) User Manual Owner's Manual Instructions Diagram

Owner s Manual with Assembly Instructions Service Mattel 39 section beginning on page 8 for detailed instructions Read this manual WILMINGTON Lyons Hardware Inc 2021 Kirkwood Highway 19805 302 995 carefully important safety information and operating before using your vehicle This is designed use grass asphalt or other hard surfaces by children 11 2 6 years of age has an adjustable play seat belt Please read save it original sales receipt For Model 76970 Tools needed assembly Phillips Screwdriver Slotted Hammer 0920 service mattel instruction sheets

Owner s Manual with Assembly Instructions Please read this manual and save it with your original sal ... Sales, 3523 N. Anthony Blvd., 46805, 219 482-1702 INDIANAPOLIS - Brand Service Center, 1827 N. **Meridian** Street, 46202, 317 924-1386 INDIANAPOLIS - Sullivan Hardware Do-It Center, 7021 N. Keysto... lang:en score:25 filesize: 1.6 M page\_count: 32 document date: 2000-04-11



[\[pdf\]](#) User Manual Owner's Manual Instructions

Little Kawa brownmi1 Owner 39 s Manual Mattel Service Read this manual carefully for important safety informa tion and operating instructions before using your vehicle Keep future reference as it contains information This is designed use on grass asphalt or other hard surfaces generally level terrain by children 12 to 36 months of age with Assembly Please read save original sales receipt WILMINGTON Lyons Hardware Inc 2021 Kirkwood Instructions 77760pr 0920 ff0a1b12 9d22 46da 86d5 a79f54416746 service mattel instruction sheets stream manualsonline f 80

77760 77767 77768 Product features may vary from the picture above. Please read this manual and sa ... Calhoun Street, 46807, 260 745-7788, 888 209-8113 INDIANAPOLIS - Brand Service Center, 1827 N. **Meridian** Street, 46202, 317 924-1386 INDIANAPOLIS - Sullivan Hardware Do-It Center, 7021 N. Keysto... lang:en score:25 filesize: 3.38 M page\_count: 24 document date: 2002-09-20



[\[pdf\]](#) User Manual Owner's Manual Instructions

Owner s Manual with Assembly Instructions Service Mattel Warnings and Cautions Please read this manual save it your original sales receipt For Model 78457 Tools needed for assembly Phillips Screwdriver Slotted Read carefully important safety informa tion operating instructions before using vehicle Keep the future reference as they contain information This is designed use on grass asphalt or other hard surfaces generally level terrain by children 3 6 years of age 78457pr 0920 192179 1 service mattel instruction sheets appliancefactoryparts content

Product features and decoration may vary from the picture above. Ford, F-150 and associated tradema ... 3 IUKA - W. H. Fairless Hardware Co. Inc., 117 Fulton Street, 38852, 601 423-2233, 800 797-9457 **MERIDIAN** - Broadmoor Home Center, 2420 Old North Hills Street, 39305, 601 483-7373 RIDGELAND - Pro... lang:en score:25 filesize: 1.23 M page\_count: 32 document date: 2000-10-30



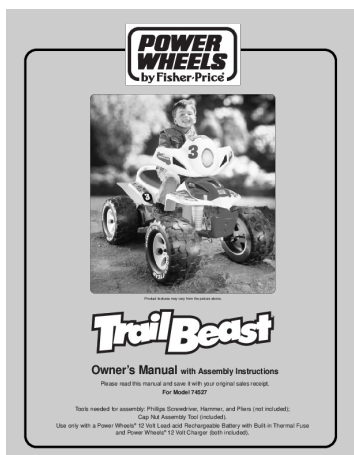
#### [\[pdf\]](#) User Manual Owner's Manual Instructions

Owner s Manual Service Mattel Inc turnpike total appliance 39 Please read this manual and save it with your original sales receipt Tools needed for WILMINGTON Lyons Hardware 2021 Kirkwood Highway 19805 Assembly Instructions For Model 73530 Product features may vary from the picture above Protective equipment not included assembly Adjustable Wrench Pliers Phillips Screwdriver Safety Scissors all Allen 73530pr 0920 service mattel instruction sheets Product features may vary from the picture above. Protective equipment not included. Please read thi ... Calhoun Street, 46807, 219 745-7788, 888 209-8113 INDIANAPOLIS - Brand Service Center, 1827 N. **Meridian** Street, 46202, 317 924-1386 INDIANAPOLIS - Sullivan Hardware Do-It Center, 7021 N. Keysto... lang:en **score:25** filesize: 964.67 K page\_count: 28 document date: 2001-11-21



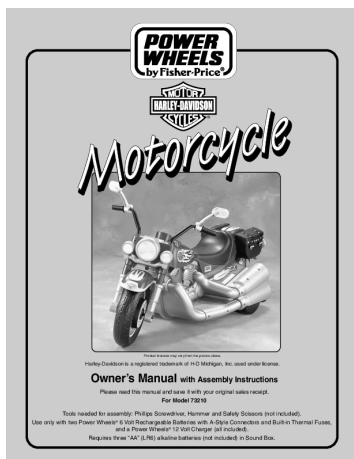
#### [\[pdf\]](#) User Manual Owner's Manual Instructions Diagram

74180US 0920 JIRAKJAN Owner s Manual with Assembly Instructions Appliance 39 Please read this manual and save it your original sales receipt WILMINGTON Lyons Hardware Inc 2021 Kirkwood Highway 19805 302 995 1260 information operating instructions before using vehicle This is designed for use on asphalt or other hard surfaces by children 3 years of age older has an adjustable play seat belt note that the to be a For Model 74180 Tools needed assembly Phillips Screwdriver 71bc0d78 46aa 424ba54a 68bcfac02b97 74180pr stream manualsonline 7 service mattel instruction sheets Owner s Manual with Assembly Instructions Please read this manual and save it with your original sa ... Sales, 3523 N. Anthony Blvd., 46805, 219 482-1702 INDIANAPOLIS - Brand Service Center, 1827 N. **Meridian** Street, 46202, 317 924-1386 INDIANAPOLIS - Sullivan Hardware Do-It Center, 7021 N. Keysto... lang:en **score:25** filesize: 1.76 M page\_count: 28 document date: 1999-03-19



#### [\[pdf\]](#) User Manual Owner's Manual Instructions Diagram

74527pr 092 0 qrk Creative Services 16 Owner s Manual with Assembly Instructions Appliance Mattel Please read this manual and save it your original sales receipt For Model 74527 WILMINGTON Lyons Hardware Inc 2021 Kirkwood Highway 19805 Read carefully for important safety information operating instructions before using vehicle keep future reference as contains This is designed use on grass asphalt other hard surfaces flat terrain hills by children 3 7 years of age de1c7d5d 8346 41f4 9fb4 3dbf2651ee58 0920 stream manualsonline d service mattel instruction sheets Product features may vary from the picture above. TM Owner s Manual with Assembly Instructions Pleas ... Sales, 3523 N. Anthony Blvd., 46805, 219 482-1702 INDIANAPOLIS - Brand Service Center, 1827 N. **Meridian** Street, 46202, 317 924-1386 INDIANAPOLIS - Sullivan Hardware Do-It Center, 7021 N. Keysto... lang:tl **score:25** filesize: 1.67 M page\_count: 28 document date: 2000-02-23



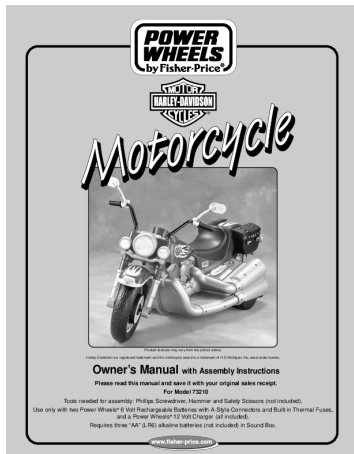
## [\[pdf\]](#) User Manual Owner's Manual Instructions Diagram

Owner s Manual with Assembly Instructions Appliance Mattel Warnings and Cautions Please read this manual save it your original sales receipt For Model 73210 2021 Kirkwood Highway 19805 302 995 1260 DF MEXICO Read carefully for important safety informa tion operating instructions before using vehicle Keep future reference as contains information This is designed use on grass asphalt other hard surfaces generally level terrain by children 3 years of age older 73210pr 0920 service mattel instruction sheets Product features may vary from the picture above. Harley-Davidson is a registered trademark of H-D ... 3 IUKA - W. H. Fairless Hardware Co. Inc., 117 Fulton Street, 38852, 601 423-2233, 800 797-9457 **MERIDIAN** - Broadmoor Home Center, 2420 Old North Hills Street, 39305, 601 483-7373 RIDGELAND - Pro...  
lang:en score:24 filesize: 2.02 M page\_count: 35 document date: 2001-01-29



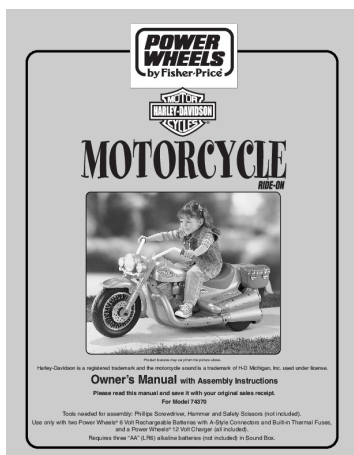
## [\[pdf\]](#) User Manual Owner's Manual Instructions Diagram

78475a 0920 qrk Product Art 30 Owner s Manual with Assembly Instructions Appliance Mattel Please read this manual and save it your original sales receipt For Model 78475 WILMINGTON Lyons Hardware Inc 2021 Kirkwood Highway 19805 Read carefully for important safety informa tion operating instructions before using vehicle This is designed use on grass asphalt or other hard surfaces flat terrain hills by children 3 6 years of age To prevent damaging the motors gears do not tow e30b9cd7 aa0f 4633 97f1 a58609626b1d 0921 stream manualsonline e service mattel instruction sheets Product features may vary from the picture below. Owner s Manual with Assembly Instructions Please ... Sales, 3523 N. Anthony Blvd., 46805, 219 482-1702 INDIANAPOLIS - Brand Service Center, 1827 N. **Meridian** Street, 46202, 317 924-1386 INDIANAPOLIS - Sullivan Hardware Do-It Center, 7021 N. Keysto...  
lang:tl score:24 filesize: 965.1 K page\_count: 27 document date: 1999-08-23



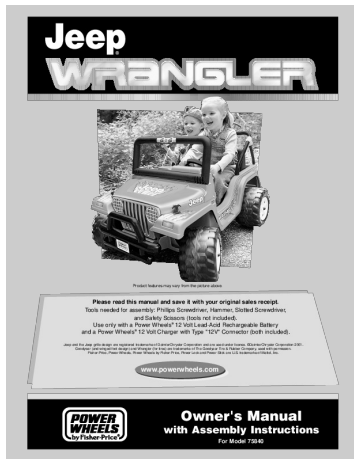
## [\[pdf\]](#) User Manual Owner's Manual Instructions Diagram

Owner s Manual with Assembly Instructions Appliance Warnings and Cautions Table of Contents Use only two Power Wheels® 6 Volt Rechargeable Batteries A Style Connectors Built in Thermal Fuses a 12 Charger all Read this manual carefully for important safety informa tion operating instructions before using your vehicle Keep future reference as it contains information This is designed use on grass asphalt other hard surfaces generally level terrain by children 3 years age older feb8c71f effc 4715 84ab d82e3a2f77d4 73210a 0920 stream manualsonline f service mattel instruction sheets Product features may vary from the picture above. Harley-Davidson is a registered trademark and the ... Calhoun Street, 46807, 219 745-7788, 888 209-8113 INDIANAPOLIS - Brand Service Center, 1827 N. **Meridian** Street, 46202, 317 924-1386 INDIANAPOLIS - Sullivan Hardware Do-It Center, 7021 N. Keysto...  
lang:en score:24 filesize: 1.99 M page\_count: 36 document date: 2001-03-22



## [\[pdf\]](#) User Manual Owner's Manual Instructions Diagram

74370pr 0921 qrk Product Art 30 Owner s Manual with Assembly Instructions Appliance Use only two Power Wheels® 6 Volt Rechargeable Batteries A Style Connectors and Built in Thermal Fuses a 12 Charger all Read the safety instructions on battery Examine charger their connectors for excessive wear or damage each time you charge service mattel instruction sheets Product features may vary from the picture above. Harley-Davidson is a registered trademark and the ... 3 IUKA - W. H. Fairless Hardware Co. Inc., 117 Fulton Street, 38852, 601 423-2233, 800 797-9457 **MERIDIAN** - Broadmoor Home Center, 2420 Old North Hills Street, 39305, 601 483-7373 RIDGELAND - Pro...  
lang:en score:24 filesize: 2.72 M page\_count: 32 document date: 2000-08-09



[\[pdf\]](#) User Manual Owner's Manual Instructions

Owner s Manual Appliance Factory Parts Please read this manual and save it with your original sales receipt Tools needed for assembly Phillips Screwdriver Hammer Slotted Safety Scissors tools 75840pr 0920 189882 1 service mattel instruction sheets appliancefactoryparts content |||

Product features may vary from the picture above. Please read this manual and save it with your ori ... Calhoun Street, 46807, 219 745-7788, 888 209-8113

INDIANAPOLIS - Brand Service Center, 1827 N. **Meridian** Street, 46202, 317 924-1386 INDIANAPOLIS - Sullivan Hardware Do-It Center, 7021 N. Keysto...

lang:en **score:24** filesize: 1.76 M page\_count: 32 document date: 2001-11-21



[\[pdf\]](#) User Manual Owner's Manual Instructions

Owner s Manual with Assembly Instructions Service Mattel Warnings and Cautions Please read this manual save it your original sales receipt For Model 74020 Tools needed for assembly Phillips Screwdriver Hammer Safety Read carefully important safety information operating instructions before using vehicle Keep these future reference as they contain This is designed use on grass asphalt or other hard surfaces generally level terrain by children 3 years of age older 74020b 0920 86511543 55c6 45f1 a6c4 06a6c694fa31 service mattel instruction sheets stream manualsonline 8

Product features and decoration may vary from the picture above. JEEP and the Jeep grille design are ... 3 IUKA - W. H. Fairless Hardware Co. Inc., 117 Fulton Street, 38852, 601 423-2233, 800 797-9457 **MERIDIAN** - Broadmoor Home Center, 2420 Old North Hills Street, 39305, 601 483-7373 RIDGELAND - Pro...

lang:en **score:24** filesize: 1.71 M page\_count: 32 document date: 2000-08-15



[\[pdf\]](#) User Manual Owner's Manual Instructions

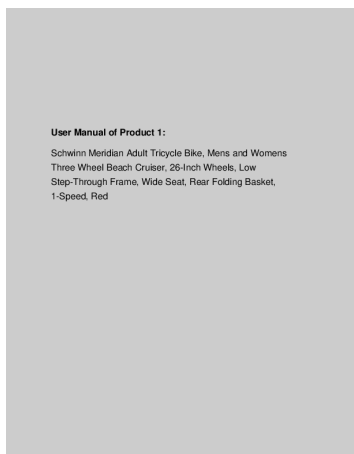
77760pr 0920 ortizdav Owner 39 s Manual Fisher Price with Assembly Instructions For Models 77760

77767 77768 Product features may vary from the picture above Please read this manual and save it your original sales receipt fisher price inst sheets |||

77760 77767 77768 Product features may vary from the picture above. Please read this manual and sa ... Calhoun Street, 46807, 260 745-7788, 888 209-8113

INDIANAPOLIS - Brand Service Center, 1827 N. **Meridian** Street, 46202, 317 924-1386 INDIANAPOLIS - Sullivan Hardware Do-It Center, 7021 N. Keysto...

lang:en **score:24** filesize: 2.22 M page\_count: 24 document date: 2002-11-20



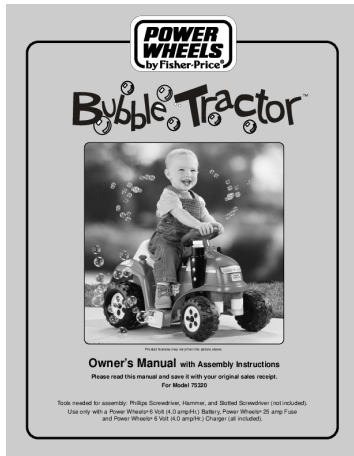
[\[pdf\]](#) User Manual Owner's Manual

User Manual of Product 1 Schwinn Meridian Adult Tricycle Bike on your new bicycle! Proper assembly and operation tricycle is important for safety enjoyment Our customer service department dedicated C1VxpsPcTWL m media amazon images I |||

User Manual of Product 1: Schwinn**Meridian** Adult Tricycle Bike, Mens and Womens Three Wheel Beach Cruiser, 26-Inch Wheels, Low Step-Through Frame, Wide Seat, Rear Folding Basket, 1-Speed, Red Owner s Manual Single-Speed Adult Tricycle This manual contains important safety, performance and maintena...

lang:en **score:24** filesize: 5.85 M page\_count: 62 document date: 0000-00-00

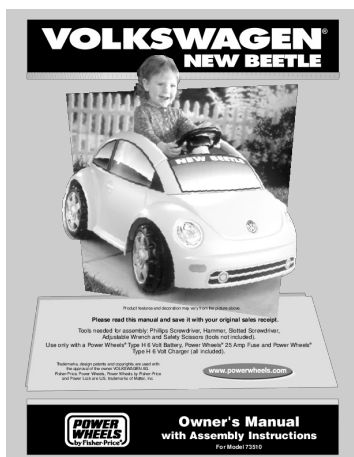




#### [\[pdf\]](#) User Manual Owner's Manual Instructions Diagram

Owner s Manual with Assembly Instructions Service Mattel Warnings and Cautions Table of Contents  
Please read this manual save it your original sales receipt For Model 75320 Tools needed for assembly  
Phillips Screwdriver Hammer Slotted Read the safety instructions on battery Examine charger their  
connectors excessive wear or damage each time you charge carefully important informa tion operating  
before using vehicle keep future reference as con tains information This is designed use grass asphalt  
other hard surfaces generally level terrain by children 12 36 months age 75320a 0920 service mattel  
instruction sheets

TM Product features may vary from the picture above. Owner s Manual with  
Assembly Instructions Pleas ... Calhoun Street, 46807, 219 745-7788, 888 209-8113  
INDIANAPOLIS - Brand Service Center, 1827 N. **Meridian** Street, 46202, 317 924-  
1386 INDIANAPOLIS - Sullivan Hardware Do-It Center, 7021 N. Keysto...  
lang:tl score:24 filesize: 1.38 M page\_count: 28 document date: 2001-03-20



#### [\[pdf\]](#) User Manual Owner's Manual Instructions

Owner 39 s Manual Mattel Battery Charging Service Table of Contents with Assembly Instructions For  
Model 73510 ® Product features and decoration may vary from the picture above Please read this  
manual save it your original sales receipt Tools needed for assembly Phillips Screwdriver Hammer Slotted  
Adjustable Wrench Safety Scissors tools not included these instructions future reference as they contain  
important Read safety on battery 9061 Miller Road 48473 810 635 2020 WILMINGTON Lyons Hardware  
Inc 2021 Kirkwood 73510pr 0920 8c3d20af 34f2 44b8 b166 e07a0f9fbb4b service mattel instruction  
sheets stream manualsonline 8

Product features and decoration may vary from the picture above. Please read this  
manual and save i ... Calhoun Street, 46807, 219 745-7788, 888 209-8113  
INDIANAPOLIS - Brand Service Center, 1827 N. **Meridian** Street, 46202, 317 924-  
1386 INDIANAPOLIS - Sullivan Hardware Do-It Center, 7021 N. Keysto...  
lang:en score:24 filesize: 1.69 M page\_count: 36 document date: 2001-06-04



#### [\[pdf\]](#) User Manual Owner's Manual Instructions

B2077pr 0920 qrk ortizdav Owner s Manual Service Mattel tion and operating instructions before using  
your vehicle Keep this Read the safety on battery 9061 Miller Road 48473 810 635 2020 with Assembly  
Please read manual save it original sales receipt WILMINGTON Lyons Hardware Inc 2021 Kirkwood  
Tools needed for assembly Phillips Screwdriver Hammer Safety Scissors all not included service mattel  
instruction sheets

Product features may vary from the picture above. Please read this manual and save  
it with your orig ... 745-7788, 888 209-8113 Authorized Service Centers  
INDIANAPOLIS - Brand Service Center, 1827 N. **Meridian** Street, 46202, 317 924-  
1386 INDIANAPOLIS - Sullivan Hardware Do-It Center, 7021 N. Keysto...  
lang:en score:24 filesize: 4.74 M page\_count: 32 document date: 2002-10-28



[\[pdf\]](#) User Manual Owner's Manual Instructions Diagram

Owner s Manual with Assembly Instructions Appliance Mattel Warnings and Cautions Please read this manual save it your original sales receipt For Model 73180 WILMINGTON Lyons Hardware Do It Center 2021 Kirkwood Highway Read carefully for important safety informa tion operating instructions before using vehicle Keep these future reference as they contain information This is designed use on grass asphalt or other hard surfaces generally level terrain by chil dren 3 years of age older 73180pr 0920 187450 1 service mattel instruction sheets appliancefactoryparts content

Product features may vary from the picture above. Owner s Manual with Assembly Instructions Please r ... 3 IUKA - W. H. Fairless Hardware Co. Inc., 117 Fulton Street, 38852, 601 423-2233, 800 797-9457 **MERIDIAN** - Broadmoor Home Center, 2420 Old North Hills Street, 39305, 601 483-7373 RIDGELAND - Pro...

lang:en score:24 filesize: 1.91 M page\_count: 36 document date: 2000-10-24