

Corsair HS55 WIRELESS

Corsair HS55 Wireless Multiplatform Gaming Headset User Manual

Model: HS55 WIRELESS

1. INTRODUCTION

This manual provides detailed instructions for the setup, operation, maintenance, and troubleshooting of your Corsair HS55 Wireless Multiplatform Gaming Headset. Please read this manual thoroughly before using the product to ensure optimal performance and longevity.



Image 1.1: The Corsair HS55 Wireless Multiplatform Gaming Headset with its accompanying USB wireless dongle. The headset is white with gray earcups and an adjustable microphone.

2. PACKAGE CONTENTS

Verify that all items are present in your product packaging:

- Corsair HS55 Wireless Multiplatform Gaming Headset
- USB Wireless Dongle (2.4GHz)
- USB Charging Cable
- Quick Start Guide (this document)



Image 2.1: The Corsair HS55 Wireless headset displayed next to its retail packaging, which also shows the USB wireless dongle.

3. SETUP

3.1 Charging the Headset

Before initial use, fully charge the headset using the provided USB charging cable. Connect the small end of the USB cable to the headset's charging port and the larger end to a powered USB port on your computer or a USB wall adapter. The LED indicator on the headset will show charging status.

3.2 Connecting via 2.4GHz Wireless (PC, PS5, PS4)

1. Insert the USB wireless dongle into an available USB port on your PC, PlayStation 5, or PlayStation 4.
2. Power on the headset by pressing and holding the power button until the LED indicator illuminates.
3. The headset and dongle should automatically pair. A solid LED on both devices indicates a successful connection.
4. On PC/Mac, download and install the Corsair iCUE software from the official Corsair website for advanced audio customization, Dolby Audio 7.1 surround sound, and firmware updates.

3.3 Connecting via Bluetooth (Mobile, Nintendo Switch, PC)

1. Ensure the headset is powered on.
2. Press and hold the Bluetooth button on the headset until the LED indicator blinks rapidly, indicating pairing mode.
3. On your mobile device or Nintendo Switch, navigate to the Bluetooth settings and select "Corsair HS55 Wireless" from the list of available devices.
4. A solid LED on the headset indicates a successful Bluetooth connection.



Image 3.1: Visual representation of the headset's low-latency 2.4GHz wireless and Bluetooth connectivity, highlighting compatibility with various devices including desktop PC, laptop PC, mobile, and PlayStation 4/5.

4. OPERATING INSTRUCTIONS

4.1 Headset Controls

- **Power Button:** Press and hold to power on/off.
- **Volume Wheel:** Adjusts the headset's audio output level.
- **Microphone Flip-to-Mute:** Flip the microphone boom arm up to mute, and down to unmute. An audible tone confirms the mute status.
- **Bluetooth Button:** Press and hold to enter Bluetooth pairing mode. Press briefly to switch between 2.4GHz wireless and Bluetooth modes.

4.2 Audio Features

- **Dolby Audio 7.1 Surround Sound:** Available on PC and Mac via Corsair iCUE software, providing an immersive audio experience.
- **Tempest 3D Audio:** Supported on PlayStation 5 for enhanced spatial audio.
- **Custom-tuned 50mm Neodymium Drivers:** Deliver clear and precise audio across a wide frequency range.

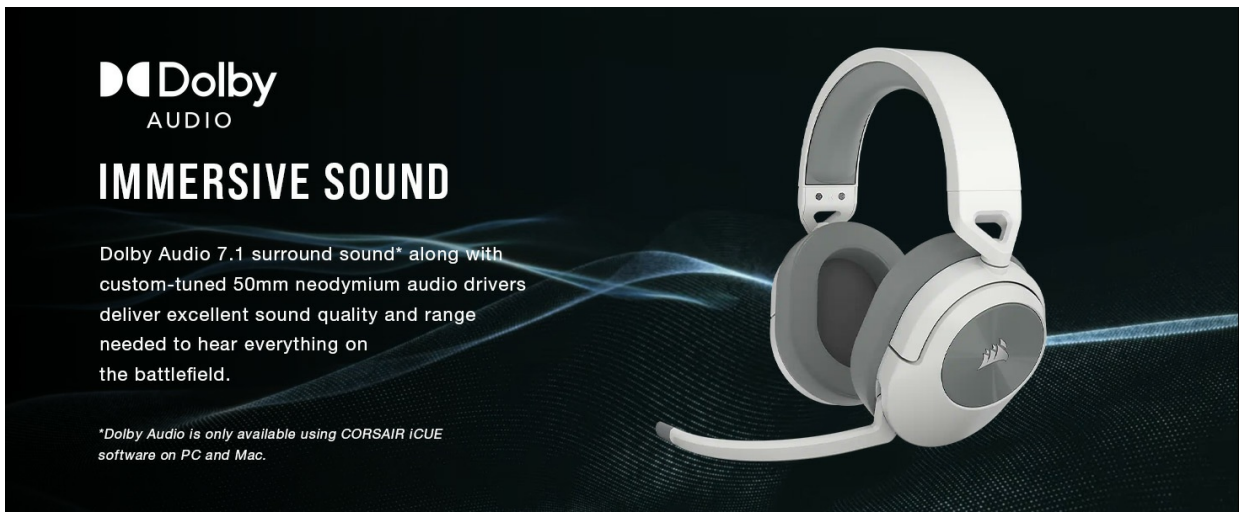


Image 4.1: The Corsair HS55 Wireless headset highlighting its immersive sound capabilities, including Dolby Audio 7.1 surround sound and custom-tuned 50mm neodymium audio drivers.

4.3 Microphone Usage

The omni-directional microphone is designed for clear voice capture. Utilize the flip-to-mute function for instant privacy during calls or gameplay.

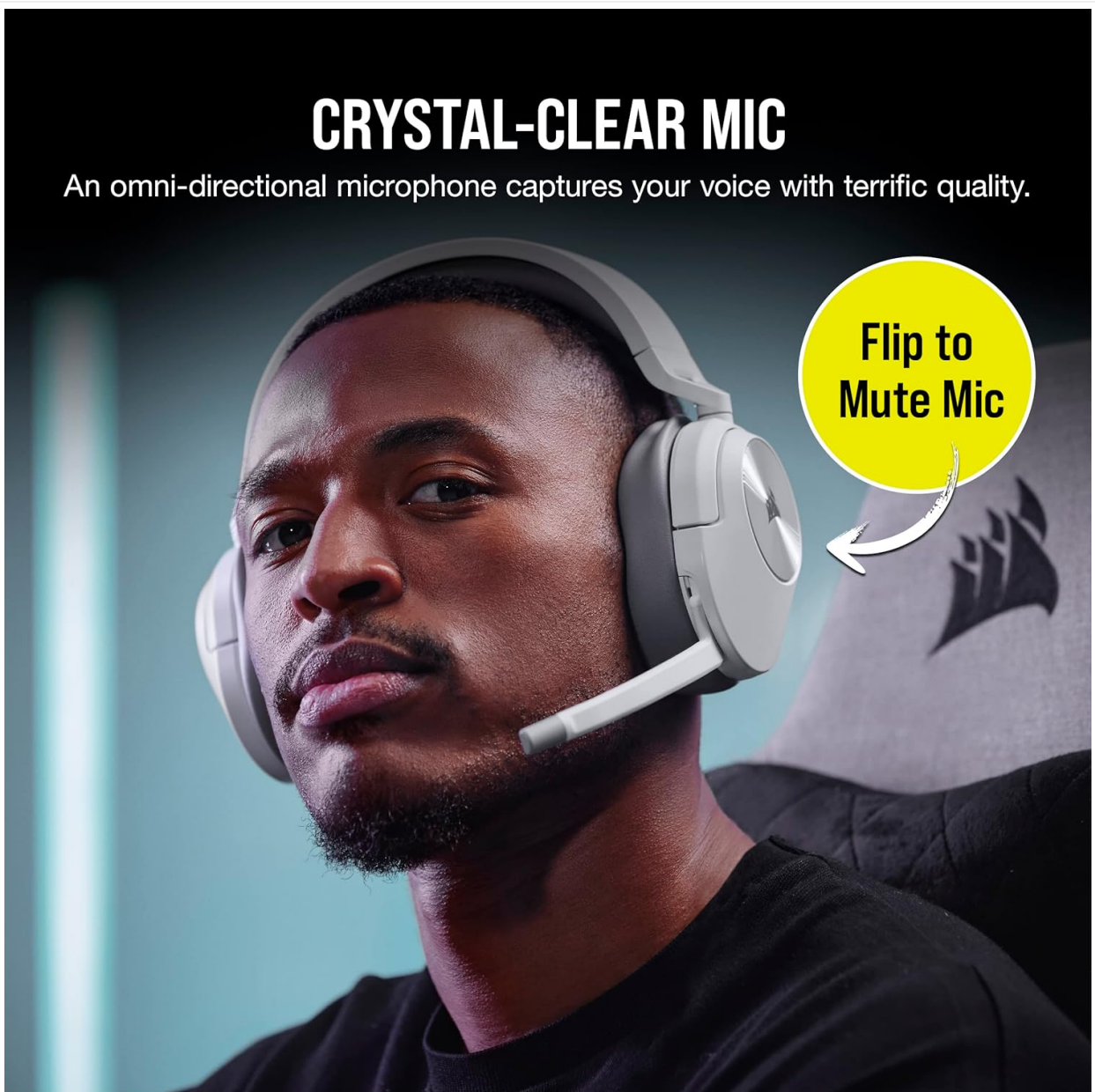


Image 4.2: A user wearing the Corsair HS55 Wireless headset, illustrating the flip-to-mute function of the omni-directional microphone.

4.4 iCUE Software (PC/Mac)

The Corsair iCUE software provides comprehensive control over your headset's settings, including:

- Audio Equalizer settings
- Dolby Audio 7.1 Surround Sound activation
- Sidetone control
- NVIDIA Broadcast integration for advanced noise removal
- Firmware updates

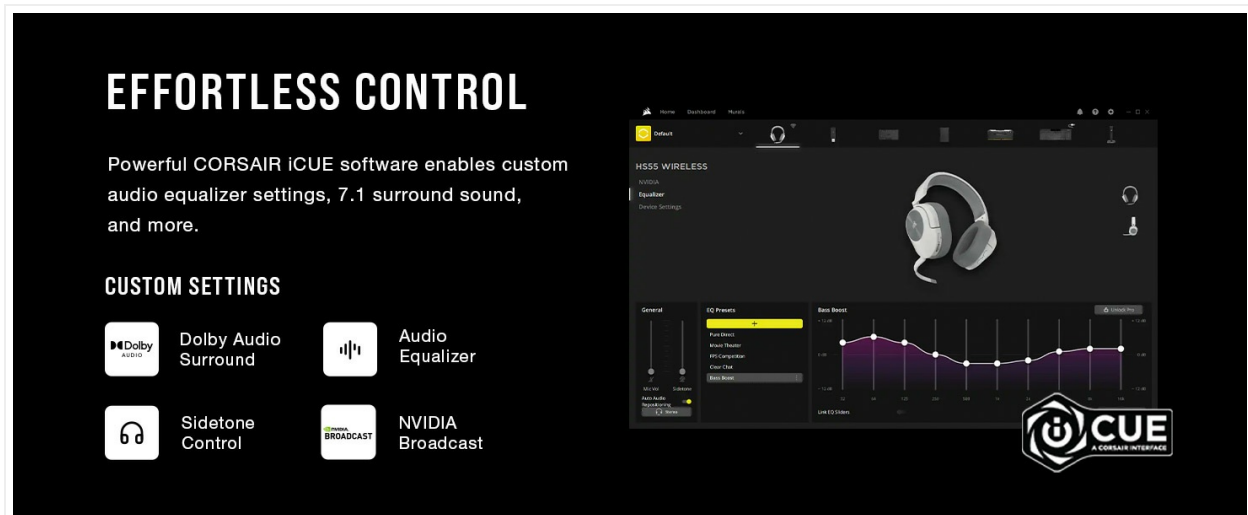


Image 4.3: A visual representation of the Corsair iCUE software interface, demonstrating options for audio equalizer, Dolby Audio surround, sidetone control, and NVIDIA Broadcast features.

5. MAINTENANCE

5.1 Cleaning

- Gently wipe the headset with a soft, dry cloth.
- Do not use harsh chemicals, cleaning solvents, or strong detergents.
- Avoid getting moisture into any openings.

5.2 Storage

Store the headset in a cool, dry place away from direct sunlight and extreme temperatures. When not in use for extended periods, ensure the headset is fully charged before storage to preserve battery health.

6. TROUBLESHOOTING

6.1 No Audio / Low Volume

- Ensure the headset is powered on and properly connected (2.4GHz dongle or Bluetooth).
- Check the volume wheel on the headset and the system volume on your device.
- Verify that the correct audio output device is selected in your operating system's sound settings.
- For PC/Mac, check iCUE software settings for any muted channels or low volume levels.

6.2 Microphone Not Working / Poor Quality

- Ensure the microphone boom arm is flipped down (unmuted).
- Verify that the correct microphone input device is selected in your operating system's sound settings and communication applications.
- Check microphone levels in your system settings and iCUE software.
- If experiencing noise or cutting out (especially on Windows 11), ensure your iCUE software and headset firmware are up to date. Try unplugging and replugging the USB dongle.

6.3 Connectivity Issues

- **2.4GHz Wireless:** Ensure the USB dongle is securely plugged in. Try a different USB port. Re-pair the headset and dongle if necessary (refer to Corsair support for specific re-pairing instructions).
- **Bluetooth:** Ensure the headset is in pairing mode. Forget the device on your mobile/Switch and attempt to re-pair. Ensure no other devices are interfering with the Bluetooth signal.
- Ensure the headset battery is sufficiently charged.

7. SPECIFICATIONS

Feature	Specification
Model Name	HS55 WIRELESS
Model Number	CA-9011281-NA
Connectivity	2.4GHz Wireless, Bluetooth 5.0
Wireless Range	Up to 50 ft (2.4GHz)
Battery Life	Up to 24 hours (2.4GHz Wireless), Up to 37 hours (Bluetooth)
Audio Drivers	50mm Neodymium Dynamic Drivers
Frequency Response	20 Hz - 20,000 Hz
Impedance	32 Ohm
Sensitivity	114 dB
Microphone	Omni-directional, Flip-to-Mute
Noise Control	Sound Isolation
Weight	9.4 ounces (266g)
Dimensions	7.24 x 3.43 x 7.6 inches
Material	Faux Leather, Plastic
UPC	840006657910

8. WARRANTY AND SUPPORT

8.1 Manufacturer's Warranty

Corsair products are backed by a manufacturer's warranty. For detailed information regarding warranty terms,

duration, and claim procedures, please refer to the warranty card included with your product or visit the official Corsair website.

8.2 Technical Support

For further assistance, technical support, or to download the latest iCUE software and firmware updates, please visit the official Corsair support website:

www.corsair.com/support