

## Manuals+

[Q & A](#) | [Deep Search](#) | [Upload](#)

[manuals.plus](#) /

› [VOOPOO](#) /

› [VOOPOO Drag 4 Vaping Kit User Manual](#)

## VOOPOO Drag 4

# VOOPOO Drag 4 Vaping Kit User Manual

Model: Drag 4 | Brand: VOOPOO

## 1. PRODUCT OVERVIEW

The VOOPOO Drag 4 is the fourth generation of the popular Drag series, designed for an enhanced vaping experience. It features a robust design with a maximum output of 177W and an innovative UFORCE-L Tank with leakproof top airflow. The device supports various power modes including RBA, Smart, TC, and Eco, offering flexibility and efficiency.



Image: The VOOPOO Drag 4 Vaping Kit, showcasing its sleek design and two available color variations.

Key features include:

- Maximum output of 177W.
- Adjustable power modes: RBA, Smart, TC, and Eco.
- UFORCE-L Tank with leakproof top airflow.
- Compatibility with PnP Dual In One coils for dense clouds and rich flavors.
- Type-C charging for faster battery replenishment.

## 2. SETUP GUIDE

### 2.1. Battery Installation

The VOOPOO Drag 4 requires 18650 batteries, which are sold separately. Ensure you use high-drain 18650 batteries suitable for vaping devices. Open the battery compartment cover, insert the batteries according to the polarity indicators (+/-), and close the cover securely.

### 2.2. Coil Installation

The kit includes two PnP coils: one 0.2Ω (preinstalled) and one 0.15Ω (spare). To install or replace a coil:

1. Unscrew the base of the UFORCE-L Tank.
2. Pull out the old coil (if replacing).
3. Push the new PnP coil firmly into the tank base.
4. Screw the tank base back onto the tank.



Image: Close-up view of the VOOPOO PnP Dual In One coils, highlighting their design for enhanced flavor and vapor production.

### 2.3. E-liquid Filling

The UFORCE-L Tank features a convenient top-fill design. To fill with e-liquid:

1. Unscrew the mouthpiece of the UFORCE-L Tank.
2. Carefully fill the tank with your preferred e-liquid through the filling ports, avoiding the central airflow tube.

3. Screw the mouthpiece back on securely.
4. Allow the coil to prime for 5-10 minutes after the first fill or coil replacement to ensure the cotton is fully saturated.

## 3. OPERATING INSTRUCTIONS

### 3.1. Power On/Off

Press the fire button 5 times rapidly to turn the device on or off.

### 3.2. Mode Selection

The Drag 4 offers four adjustable power modes:

- **RBA Mode:** Provides full control over wattage output, ideal for experienced users.
- **Smart Mode:** Automatically selects the optimal wattage for your installed coil, simplifying operation.
- **TC Mode:** Temperature Control mode for specific coil materials (e.g., Ni, Ti, SS).
- **Eco Mode:** Conserves battery life when the battery level drops to 40% or below.

Refer to the device's screen and buttons to navigate and select your desired mode. Typically, pressing the fire button 3 times rapidly allows you to cycle through modes.

### 3.3. Wattage Adjustment

Use the adjustment buttons (usually '+' and '-') located below the screen to increase or decrease the wattage output. The current wattage is displayed on the OLED screen.





Image: The VOOPOO Drag 4 device, showing its OLED screen with a 177W power output display and control buttons.

### 3.4. Airflow Adjustment

The UFORCE-L Tank features an airflow control wheel. Simply twist this wheel to adjust the airflow, allowing you to customize the tightness or looseness of your inhale to suit your preference for MTL (Mouth-to-Lung) or DTL (Direct-to-Lung) vaping.

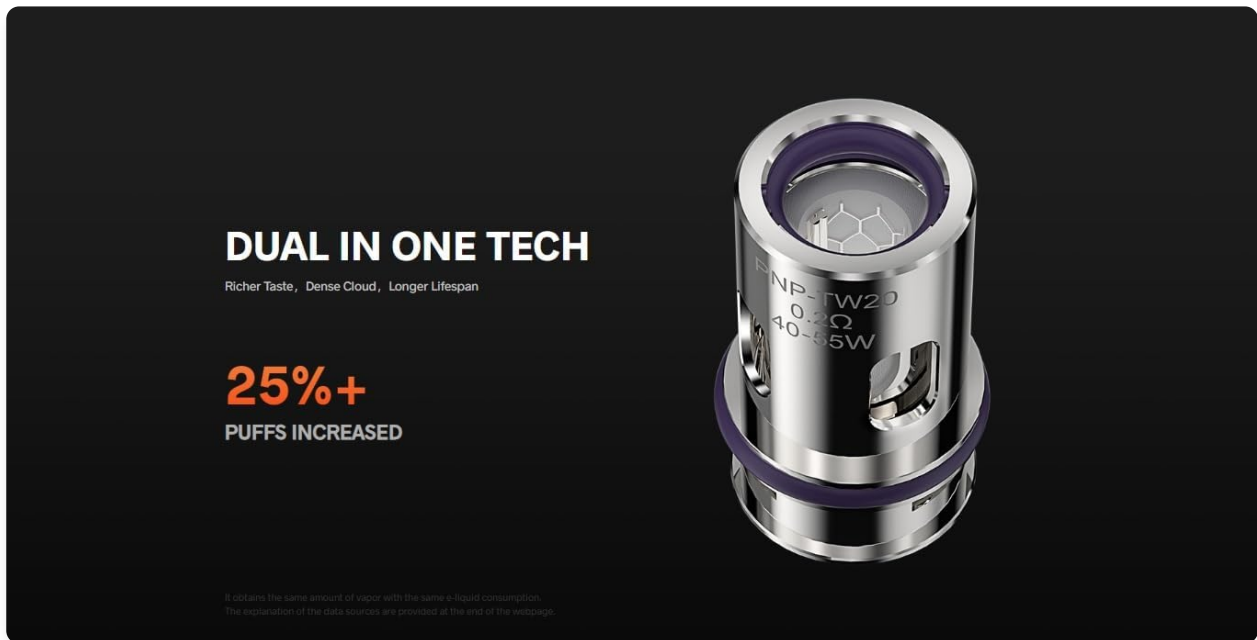


Image: The VOOPOO UFORCE-L Tank, illustrating its innovative 3-hole top airflow system designed to prevent leaks and enhance flavor.

### 3.5. Charging

Connect the included Type-C charging cable to the device's charging port and a suitable USB power source. The OLED screen will display the charging status. For optimal battery life, it is recommended to charge batteries externally with a dedicated charger.

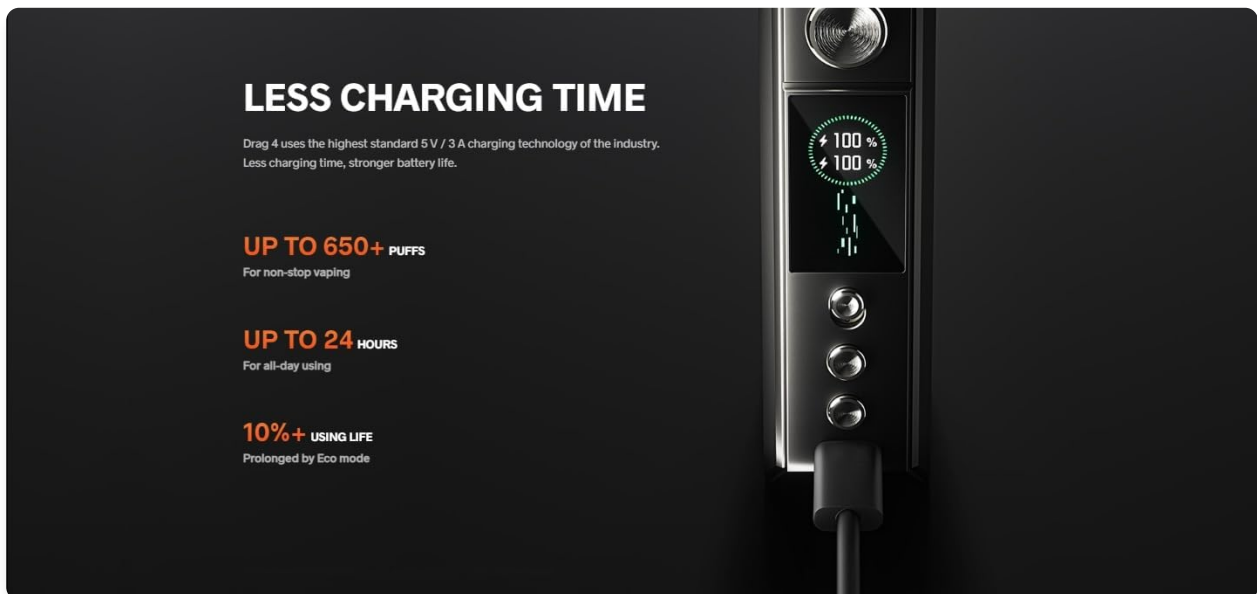


Image: The VOOPOO Drag 4 device connected for charging via its USB-C port, with the screen indicating battery levels.

## 4. MAINTENANCE

### 4.1. Tank Cleaning

Regular cleaning of your UFORCE-L Tank is essential for optimal performance and flavor. Disassemble the tank by unscrewing the mouthpiece, top cap, glass tube, and base. Rinse all components (except the coil) with



warm water. For thorough cleaning, use a soft brush or cloth. Ensure all parts are completely dry before reassembly.

## 4.2. Coil Replacement

Coils have a limited lifespan and should be replaced when you notice a burnt taste, reduced vapor production, or diminished flavor. Follow the coil installation steps in Section 2.2. The PnP Dual In One coils are designed for extended use, but replacement frequency depends on usage habits and e-liquid type.

## 4.3. General Care

- Keep the device clean and free from e-liquid residue, especially around the 510 connection and charging port.
- Store the device in a cool, dry place away from direct sunlight and extreme temperatures.
- Avoid dropping the device or exposing it to water.

# 5. TROUBLESHOOTING

If you encounter issues with your VOOPOO Drag 4, refer to the following common problems and solutions:

Problem	Possible Cause	Solution
Device not turning on	Low battery; Incorrect battery installation; Device off	Charge batteries; Reinstall batteries correctly; Press fire button 5 times rapidly to turn on.
No vapor production	Coil not installed correctly; Coil burnt out; No e-liquid; Low battery; Device locked	Ensure coil is seated firmly; Replace coil; Refill tank; Charge batteries; Unlock device (if applicable).
Leaking tank	Coil not installed correctly; O-rings damaged/missing; Overfilling; Tank components loose	Ensure coil is fully seated; Check/replace O-rings; Do not overfill; Tighten all tank components.
Burnt taste	Coil burnt out; Insufficient e-liquid (dry hit); Wattage too high	Replace coil; Refill tank and allow to prime; Reduce wattage.
Screen not working	Software issue; Hardware malfunction	Try turning the device off and on. If the issue persists, contact VOOPOO customer support.

*If the problem persists after attempting these solutions, please contact VOOPOO customer support or refer to the official VOOPOO website for further assistance.*

# 6. SPECIFICATIONS

Detailed specifications for the VOOPOO Drag 4 Vaping Kit:

- **Product Dimensions:** 5.24 x 2.54 x 0.9 cm
- **Item Weight:** 400 Grams
- **Wattage:** 177 watts (Max)
- **Tank Volume:** 2 Millilitres (TPD compliant)
- **Color:** Black & Walnut
- **Special Feature:** Nicotine Free (when used with nicotine-free e-liquid)
- **Manufacturer:** VOOPOO
- **ASIN:** B0BSR3333J
- **First Available Date:** 20 Jan. 2023



Image: A comprehensive chart displaying the various VOOPOO PnP coils compatible with the UFORCE-L Tank, including their resistance and recommended power ranges.

## 7. WHAT'S IN THE BOX

Your VOOPOO Drag 4 Vaping Kit package includes:

- 1 x Drag 4 Mod
- 1 x UFORCE-L Tank (2ml)
- 1 x PnP-TW20 Coil (0.2Ω, preinstalled)
- 1 x PnP-TW15 Coil (0.15Ω, spare)
- 1 x Charging Cable (Type-C)
- 1 x User Manual
- 1 x Straight Glass (2ml)
- 1 x Silicon Rubber Pack

## BIG THRILLS, SMALL BILLS

UFORCE-L TANK is compatible with all PnP coils including RBA coils.  
By switching easily, you can enjoy a variety of fun and affordable vaping experiences.

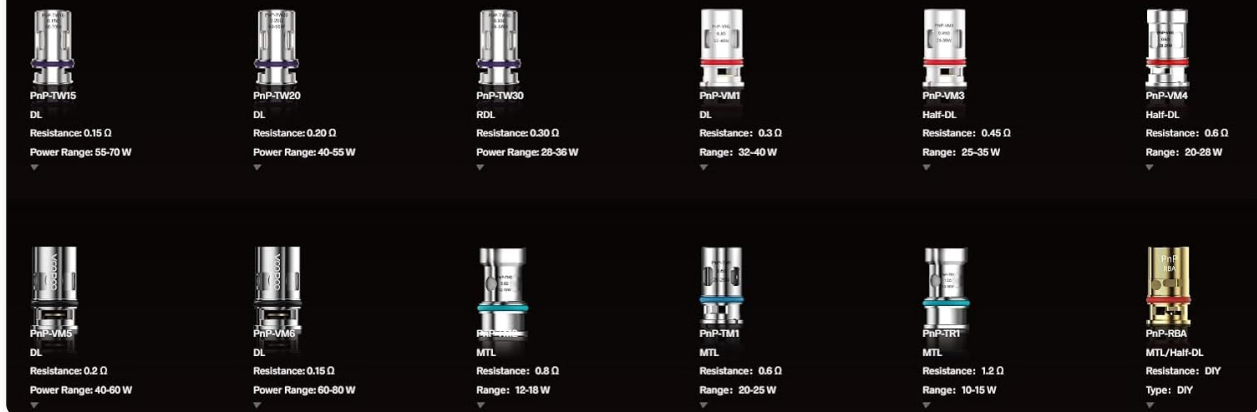


Image: An illustration of the VOOPOO Drag 4 kit contents, including the mod, tank, coils, charging cable, and user manual.

## 8. IMPORTANT SAFETY INFORMATION & LEGAL DISCLAIMER

**WARNING:** The following warning only applies when the product is used with nicotine-containing e-liquid: this product contains nicotine which is a highly addictive substance. Keep this product out of the reach of children. Size of cartridge (not exceeding 2ml).

- Do not use the device if it is damaged or has been tampered with.
- Use only genuine VOOPOO coils and accessories.
- Do not expose the device to extreme temperatures, direct sunlight, or water.
- Dispose of batteries and electronic components responsibly according to local regulations.

## 9. WARRANTY AND SUPPORT

For warranty information and customer support, please refer to the official VOOPOO website or contact the retailer from whom you purchased the product. Warranty terms and conditions may vary by region and retailer.

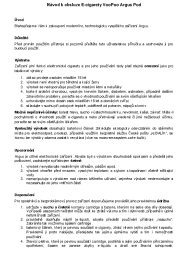



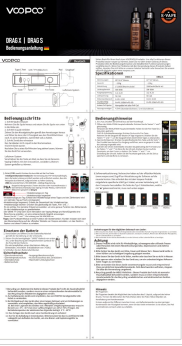

Official VOOPOO Website: [www.voopoo.com](http://www.voopoo.com)

© 2024 VOOPOO. All rights reserved.

This manual is for informational purposes only. Specifications are subject to change without notice.



Related Documents - Drag 4

	<p><a href="#">VooPoo Argus Pod E-cigarette User Manual</a></p> <p>Comprehensive user manual for the VooPoo Argus Pod e-cigarette, covering setup, operation, maintenance, safety warnings, and technical specifications.</p>
	<p><a href="#">VOOPOO DRAG 2 User Manual and Instructions</a></p> <p>Comprehensive user manual for the VOOPOO DRAG 2, covering product description, specifications, electric parameters, security features, operating modes (Power, FIT, TC, Custom), charging, and safety precautions.</p>
	<p><a href="#">Návod k použití VooPoo Drag S2 Pod Kit – Kompletní průvodce</a></p> <p>Oficiální návod k použití pro VooPoo Drag S2 Pod Kit. Zjistěte, jak nastavit, používat a udržovat vaše zařízení, včetně informací o režimech SMART, RBA, ECO, nabíjení a bezpečnostních funkcích.</p>
	<p><a href="#">VOOPOO DRAG H40 User Manual: Operation, Features, and Safety Guide</a></p> <p>Comprehensive user manual for the VOOPOO DRAG H40 vaping device, covering setup, operation, features, maintenance, and safety precautions. Learn how to use your DRAG H40 for the best vaping experience.</p>
	<p><a href="#">VOOPOO DRAG X   DRAG S User Manual</a></p> <p>User manual for the VOOPOO DRAG X and DRAG S vape devices, covering specifications, operating steps, usage guidelines, battery installation, safety precautions, and important notices.</p>
	<p><a href="#">Návod k použití VooPoo Drag 5 Kit s UFORCE-X Tank: Kompletní průvodce</a></p> <p>Podrobný návod k použití pro VooPoo Drag 5 Kit s UFORCE-X Tank. Zjistěte vše o nastavení, režimech, údržbě a bezpečném používání vašeho zařízení.</p>