

Manuals.plus /

- › Cardinal Gates /
- › Cardinal Gates PG22 Pressure Mounted Baby Gate Instruction Manual

Cardinal Gates PG22

Cardinal Gates PG22 Pressure Mounted Baby Gate

Instruction Manual

1. INTRODUCTION

This manual provides detailed instructions for the installation, operation, and maintenance of your Cardinal Gates PG22 Pressure Mounted Baby Gate. This gate is designed to provide a secure barrier for children and pets in various home openings without requiring drilling or screws. It features a pressure-mounted system with rubber-tipped threaded spindle rods to protect wall surfaces, an auto-lock mechanism, and one-hand operation for convenience.

2. IMPORTANT SAFETY INFORMATION

WARNING: Read all instructions before assembly and use of gate. Keep instructions for future use.

- This safety gate is intended for use with children from 6 to 24 months.
- This product is designed for use in doorways, hallways, and other openings.
- Never use this gate at the top of stairs.
- Always ensure the gate is securely installed and latched before leaving a child unattended.
- Periodically check all fasteners and components to ensure they are tight and secure.
- Do not use if any components are missing or damaged.
- This gate is JPMA (Juvenile Product Manufacturers Association) certified, ensuring it meets safety standards.

3. PACKAGE CONTENTS

Please verify that all components are present before beginning installation:

- 1 x Main Gate Frame
- 4 x Threaded Spindle Rods (pressure adjustment bolts)
- 4 x Wall Cups (with adhesive pads, if applicable)

If any parts are missing or damaged, please contact Cardinal Gates customer support.

4. INSTALLATION GUIDE

The Cardinal Gates PG22 is a pressure-mounted gate, requiring no drilling. Follow these steps for proper installation:

1. **Prepare the Opening:** Ensure the surface where the gate will be mounted is clean, dry, and structurally sound. The gate is designed for openings 29.5 to 32.5 inches wide.
2. **Insert Spindle Rods:** Screw one threaded spindle rod into each of the four corners of the main gate frame. Do not tighten them fully yet.
3. **Position the Gate:** Place the gate in the desired opening. Ensure the bottom bar is flush with the floor and the gate is centered.
4. **Attach Wall Cups (Optional but Recommended):** For added stability and wall protection, attach the included wall cups to the wall at the points where the spindle rods will make contact. These can be secured with adhesive pads or, for a more permanent fixture, with screws (not required for pressure mounting).



Image: Close-up of the pressure mounting mechanism, illustrating the twist-to-tighten spindle rod and wall cup. No screws or drilling are required for installation.

5. **Adjust Pressure:** Begin tightening the threaded spindle rods by rotating them clockwise. Tighten them evenly, alternating between top and bottom, and left and right, until the gate is firmly secured in the opening. The gate should feel stable and not easily pushed over. A small gap may be visible at

the latch mechanism before full tightening; this gap will close as pressure is applied.

6. **Test Security:** Once tightened, push and pull on the gate to ensure it is securely mounted and does not move. The gate door should open and close smoothly and latch securely.

5. OPERATING THE GATE

The Cardinal Gates PG22 is designed for easy and secure operation.

Opening the Gate

To open the gate, utilize the one-hand operation mechanism:

1. **Press:** Locate the push button on the top of the gate handle and press it.
2. **Lift:** While holding the button, lift the gate handle slightly.
3. **Open:** Swing the gate door open in either direction. The gate door swings open in both directions for convenience.

ONE-HAND OPERATION

Push button technology allows for added convenience without sacrificing safety.

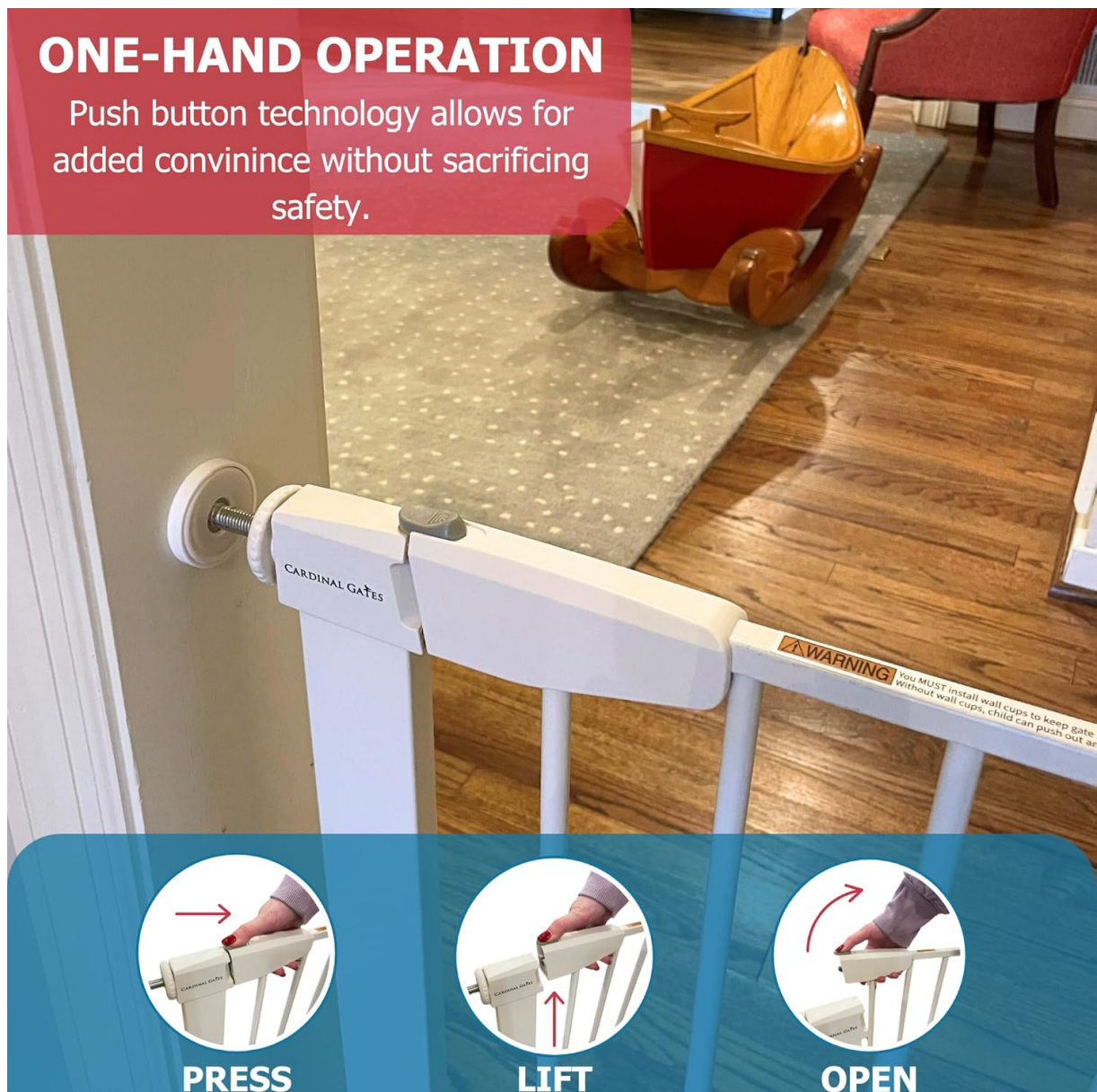


Image: Visual guide to the one-hand operation: Press, Lift, and Open.

Closing and Auto-Lock Feature

To close the gate, simply push the gate door shut. The gate features an auto-lock mechanism that will securely latch the gate in place automatically, providing peace of mind. Ensure you hear a click, indicating the gate is properly latched.

6. USING EXTENSIONS


For wider openings beyond the standard 32.5 inches, Cardinal Gates offers extensions (sold separately). The PG22 gate is compatible with 2.75-inch (model PGXS), 5.5-inch (model PGXM), and 11-inch (model PGXL) extensions.

Attaching Extensions

Extensions are designed to seamlessly integrate with the main gate frame. To attach an extension:

1. Remove the basic gate foot inserts at the top and bottom of the desired extension side with a flathead screwdriver.
2. Align the extension with the main gate frame or another extension.
3. Connect the extension using the provided pins or connectors, ensuring a secure fit.
4. All inserts can be attached on either side of the gate.

Refer to the extension combination chart below to determine which extensions you will need for your specific opening size.



WHICH EXTENSIONS YOU WILL NEED:
(along with the basic gate)

Opening Size	Small	Medium	Large
32.5 to 35"	✓		
35 to 37.75"		✓	
37.75 to 40.5"	✓	✓	
40.5 to 43.25"			✓
43.25 to 46"	✓		✓
46 to 48.75"		✓	✓
48.275 to 51.5"	✓	✓	✓
51.5 to 54.25"			✓✓


 **CARDINAL GATES PRESSURE GATE**
EXTENSION COMBINATIONS CHART

Image: Extension Combinations Chart for Cardinal Gates Pressure Gate.

PRESSURE GATE - MODEL PG22

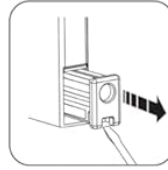
SEP.2023

EXTENSION IDENTIFIER & INSTALLATION

WHICH EXTENSIONS YOU WILL NEED:

(in conjunction with the basic gate)

Opening Size	Small	Medium	Large
32.5 to 35"	✓		
35 to 37.75"		✓	
37.75 to 40.5"	✓	✓	
40.5 to 43.25"			✓
43.25 to 46"	✓		✓
46 to 48.75"		✓	✓
48.275 to 51.5"	✓	✓	✓
51.5 to 54.25"			✓✓



STEP ONE: Remove basic gate foot inserts at top and bottom of preferred extension side with flathead screwdriver. You will insert these below marked "A".

All inserts can be attached on either side of gate.

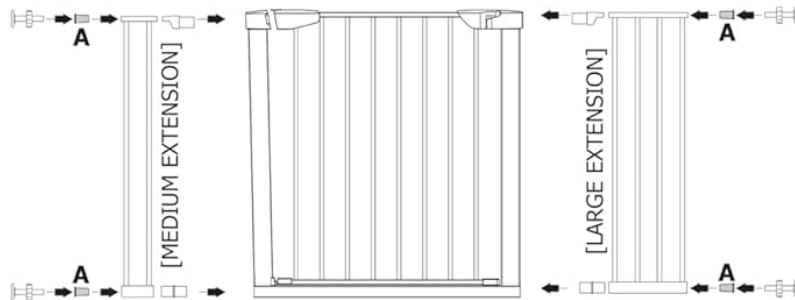
EXCEPTION:

In any combination with a small extension, small extension **MUST** attach to gate **FIRST**. (SEE BOTTOM DIAGRAM)

SMALL EXTENSION



MEDIUM or LARGE EXTENSIONS



SMALL + MEDIUM + LARGE EXTENSION COMBO

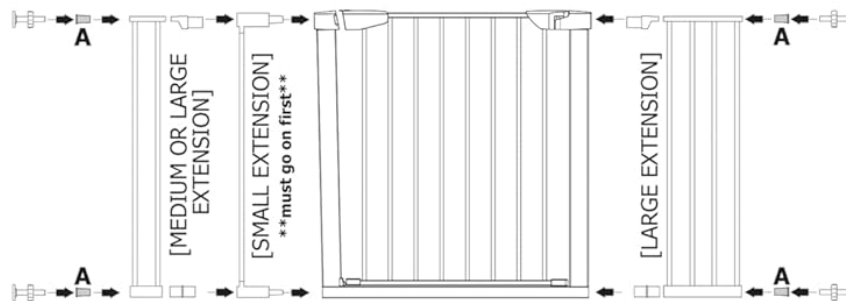


Image: Detailed diagram for extension identification and installation, including various combination setups.

7. MAINTENANCE AND CARE

To ensure the longevity and proper function of your Cardinal Gates PG22, follow these simple maintenance guidelines:

- **Cleaning:** Wipe the gate regularly with a damp cloth and mild soap. Avoid abrasive cleaners or harsh chemicals, as they may damage the finish.

- **Inspection:** Periodically inspect all parts for wear, damage, or loose connections. Pay close attention to the latch mechanism, hinges, and pressure rods.
- **Lubrication:** If the gate door becomes stiff, a small amount of silicone-based lubricant can be applied to the hinge points.
- **Storage:** If storing the gate for an extended period, ensure it is clean and dry. Store in a cool, dry place away from direct sunlight.

8. TROUBLESHOOTING

If you encounter issues with your Cardinal Gates PG22, refer to the following common problems and solutions:

- **Gate is not secure/wobbles:**
 - Ensure all four threaded spindle rods are tightened evenly. Continue tightening until the gate is firm in the opening.
 - Verify that the wall cups are properly positioned and providing adequate grip.
 - Check if the opening width is within the specified range (29.5 - 32.5 inches) or if appropriate extensions are used for wider openings.
- **Gate door does not latch or is difficult to open/close:**
 - The gate may be overtightened or undertightened. Adjust the pressure rods slightly until the latch mechanism operates smoothly.
 - Ensure the gate frame is level and square within the opening.
 - Check for any obstructions around the latch or hinge areas.
- **Missing parts upon arrival:**
 - Refer to the 'Package Contents' section. If parts are missing, contact Cardinal Gates customer support immediately for assistance.

9. PRODUCT SPECIFICATIONS

Feature	Specification
Model Number	PG22
Mounting Type	Pressure Mount
Adjustable Width	29.5 - 32.5 inches
Height	30 inches
Door Width	24 inches
Bar Spacing	2.5 inches
Material	Alloy Steel
Color	White
Item Weight	11.18 pounds
Assembly Required	Yes
Batteries Required	No

10. WARRANTY AND CUSTOMER SUPPORT

Cardinal Gates stands behind the quality of its products. For specific warranty information or to contact customer support for assistance with your PG22 gate, please refer to the contact details provided on the product packaging or visit the official Cardinal Gates website. Our dedicated team is available to help with any questions or concerns you may have.