

Manuals.plus /

> JOUNJIP /

> JOUNJIP Double-Sided Mechanical Keyless Combination Lever Handle Door Lock - Square Spindle (Satin Chrome) Model 2023  
Instruction Manual

## JOUNJIP 2023

# JOUNJIP Double-Sided Mechanical Keyless Combination Lever Handle Door Lock - Model 2023

Instruction Manual

## INTRODUCTION

This manual provides detailed instructions for the installation, operation, and maintenance of your JOUNJIP Double-Sided Mechanical Keyless Combination Lever Handle Door Lock, Model 2023. This lock is designed for secure access control without the need for batteries or external power, featuring a durable satin chrome finish and an upgraded square spindle for easier installation.



Image: JOUNJIP Double-Sided Mechanical Keyless Combination Lever Handle Door Lock, Satin Chrome.

## PRODUCT FEATURES

---

- **Upgraded Square Spindle:** The 2024 upgraded square spindle design facilitates easier and sturdier installation compared to previous versions.
- **Versatile Door Thickness Compatibility:** Accommodates door thicknesses from 1 3/8" to 2 3/8" using a single square spindle.
- **Mechanical Operation:** Requires no batteries, wiring, or external power source.
- **Weather Resistant:** Suitable for outdoor use on fences, gates, backyards, and garages (not marine proof).
- **Passage Mode:** Allows temporary deactivation of the code for free passage without altering the set combination.
- **Bump Key Proof:** Designed to resist bump key attacks.

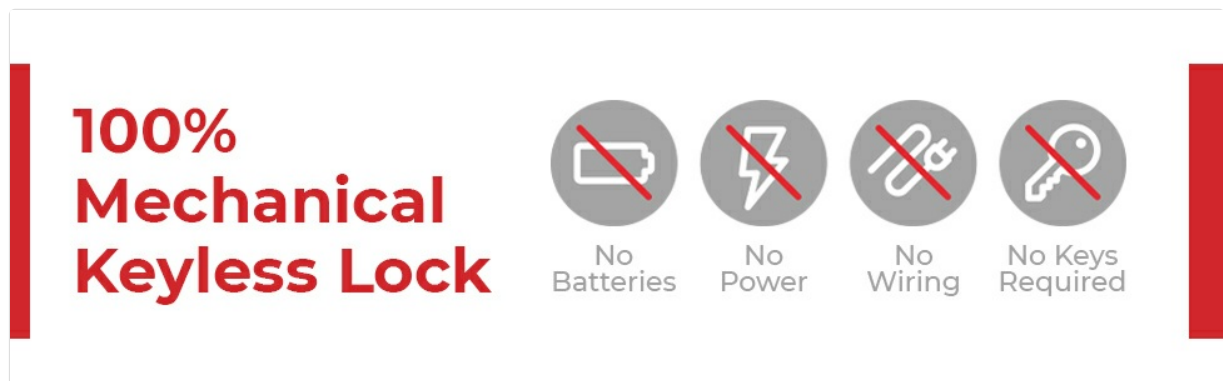


Image: 100% Mechanical Keyless Lock - No Batteries, No Power, No Wiring, No Keys.

## PACKAGE CONTENTS

---

Verify that all the following components are included in your package:



Image: Detailed view of all included parts.

- 2 Keypads and 2 Lever Handles (Outside and Inside)
- 2 Door Seals
- 1 Square Spindle (95mm)
- 2 Latch Size Options (2 3/8" and 2 3/4" Backset)
- 1 Strike Plate Set
- 3 Screw Size Options + 2 Extension Posts
- 8 Extra Code Change Pins + Tweezers
- Randomized Preset Code Card

## PRE-INSTALLATION CHECKS

Before beginning installation, ensure your door meets the following requirements:

- **Door Thickness:** The lock is compatible with door thicknesses from 1 3/8" to 2 3/8". For doors thicker than 2 3/8", an extension kit may be required.
- **Bore Hole:** The standard bore hole (2 1/8") must be covered by the black seal (2 1/2").
- **Latch Bolt Hole:** The latch bolt hole must be centered on the edge of the door.
- **Clearance:** A minimum of 6.5 inches of clearance is needed for the lever handle.

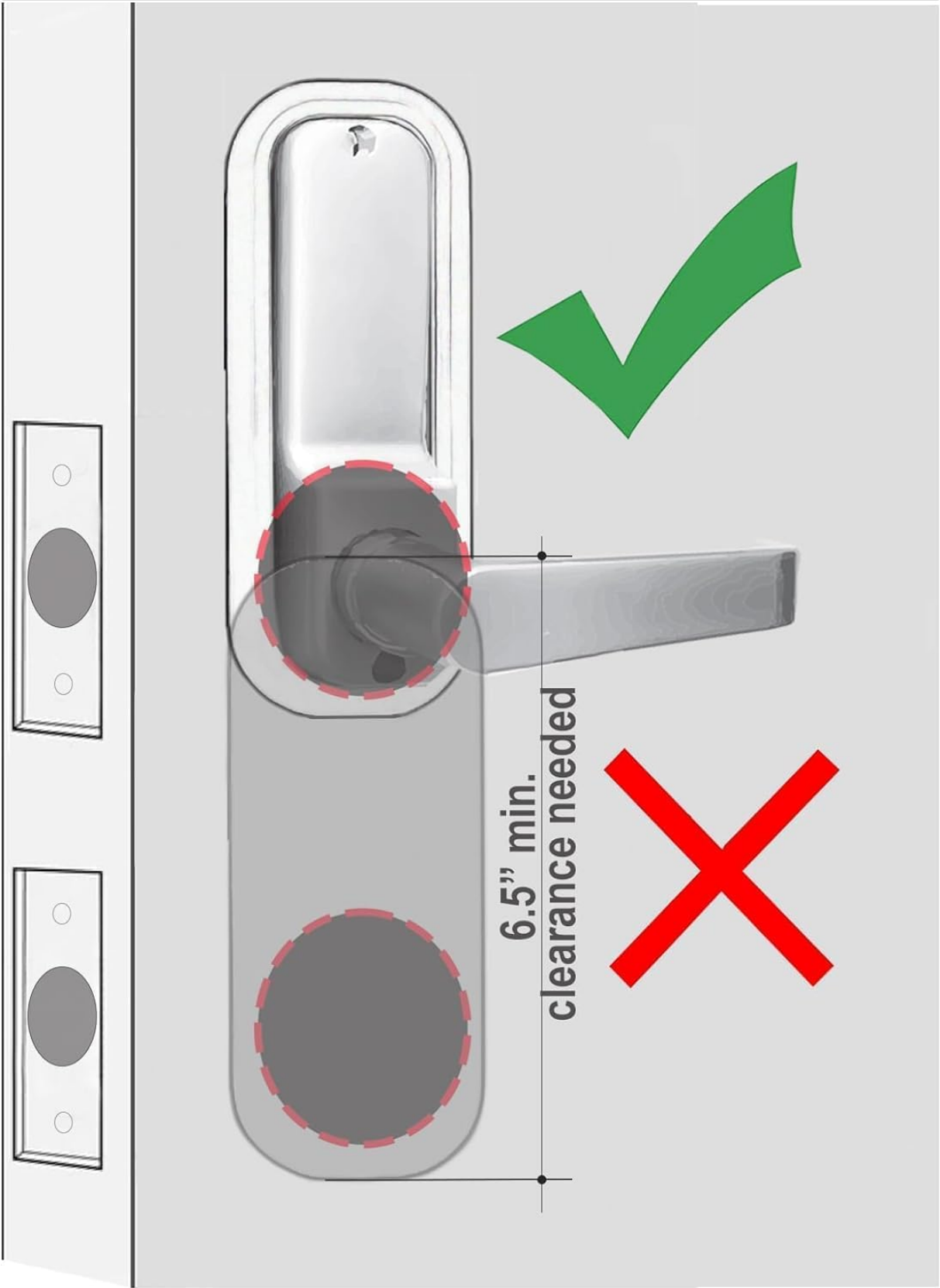


Image: Door bore hole and backset requirements.

# THANK YOU

very much for giving us  
the opportunity to serve you.



Image: Minimum clearance required for lever handle operation.

## INSTALLATION INSTRUCTIONS

Follow these steps for proper installation:

1. **Prepare the Door:** Ensure your door has the correct bore hole and backset. For most standard doors with pre-drilled holes, only one 3/8" (10mm) screw hole needs to be drilled.
2. **Install the Latch:** Choose the correct latch (2 3/8" or 2 3/4" backset) and install it into the door edge. Ensure the latch bolt hole is centered.
3. **Insert the Spindle:** Insert the square spindle through the latch mechanism. The square spindle must sit right in the center.
4. **Attach Keypads and Handles:** Place the door seals on both sides. Align the outside and inside keypad bodies with the spindle and secure them.
5. **Secure with Screws:** Use the appropriate screw length for your door thickness. Refer to the table below for guidance. Screw extensions and screw guide sleeves are provided for various thicknesses.
6. **Install Strike Plate:** Install the strike plate set on the door frame, ensuring proper alignment with the latch.

## Screw Size Guide for Door Thickness

# List of Parts

[1] Door Seal  
[2] Smaller screws

[1] Outside Keypad Body

[1] Inside Keypad Body

[1] Door Seal  
[2] Smaller screws

Satin Chrome  
Oil-Rubbed Bronze  
Matte Black

[1] 95mm Spindle

EXAMPLE  
CODE: C1267X

Randomized Preset Code Card

2 3/8" Backset  
60mm

2 3/4" Backset  
70mm

[4] Screws

[1] Strike plate set

[2] Latch Options (2 3/8" or 2 3/4" Backset)

---

Tweezers Extra code pins + spings

**Extra washers (for lever handles)**

**Use correct size screws for door thickness**

SM 50mm 1 3/8"-1 1/2" thick door

MD 60mm 1 3/4" - 2" thick door

LG 70mm 2 1/8" - 2 3/8" thick door

Screw extensions

Screw extension sleeves

Image: Screw size options for different door thicknesses.

Door Thickness	Required Screws/Extensions
1 3/8" - 1 1/2" thick door	Screw extensions + Small (50 mm) screws
1 3/4" - 2" thick door	Screw extensions + Medium (60 mm) screws
2 1/8" - 2 3/8" thick door	Screw extensions + Large (70 mm) screws

For doors more than 2 3/8" thick, search for "JOUNJIP Square Spindle Thick Door Spindle Extension Kit" on Amazon.com.

## SETTING AND CHANGING THE COMBINATION

The JOUNJIP mechanical lock uses a pin-setting mechanism to define the combination. The lock supports over 4000 combinations.



Image: Keypad with combination capability.

1. **Access the Pin Chamber:** Carefully remove the back panel of the keypad to expose the pin chamber.
2. **Identify Code Pins:** The lock uses small pins to set the combination. Red pins are 'code' pins, and blue/silver pins are 'non-code' pins.
3. **Change Pins:** Using the provided tweezers, carefully remove the existing pins. To set a new code, insert red pins into the slots corresponding to your desired combination buttons. Insert blue/silver pins into the remaining slots. Be gentle, as the pins and springs are small.
4. **Test the Code:** Before reassembling, test the new combination to ensure it functions correctly.
5. **Reassemble:** Carefully reattach the back panel of the keypad.

A preset code card is included with your lock. It is recommended to change this code upon installation for enhanced security.

## OPERATING INSTRUCTIONS

---

### Entering the Combination

To unlock the door, press the buttons corresponding to your set combination in any order, then turn the lever handle. The order of button presses does not matter, only that all correct buttons are pressed.

### Passage Mode

The lock features a passage mode option to temporarily deactivate the code requirement. This allows free entry and exit without entering the combination. To activate or deactivate passage mode, refer to the specific instructions provided on your preset code card or the detailed manual insert. This mode is useful for periods when the door needs to remain unlocked, such as during events or when moving items.

## Passage mode

Function to temporarily deactivate entry code without having to change initial lock setup.



## Bump Key Proof

Burglar's Bump Keys are useless against our keyless locks.

Image: Passage mode functionality and bump key proof design.

## MAINTENANCE

---

To ensure the longevity and optimal performance of your JOUNJIP lock:

- **Cleaning:** Wipe the lock exterior with a soft, damp cloth. Avoid abrasive cleaners or solvents that could damage the finish.
- **Lubrication:** Periodically apply a small amount of graphite lubricant to the internal mechanisms of the latch bolt to ensure smooth operation. Do not use oil-based lubricants.
- **Inspection:** Regularly check all screws and components for tightness. Tighten any loose parts to prevent wear and ensure security.
- **Weather Exposure:** While weather-resistant, prolonged exposure to extreme conditions may affect the finish. Regular cleaning and inspection are recommended for outdoor installations. Note that the lock is not salt water proof.

## TROUBLESHOOTING

---

If you encounter issues with your lock, consider the following:

- **Lock Not Engaging/Disengaging:** Check if the spindle is correctly aligned and seated in the center. Ensure the latch bolt moves freely. Verify that the correct combination is being entered.
- **Stiff Lever Handle:** Apply graphite lubricant to the latch mechanism. Check for any obstructions around the handle or latch.
- **Combination Not Working:** Re-verify the combination using the pin-setting instructions. Ensure all code pins are correctly inserted and non-code pins are in their designated positions.
- **Loose Components:** Tighten any loose screws on the keypad bodies or the latch plate.

If problems persist, please contact customer support for assistance.

## SPECIFICATIONS

---

Attribute	Detail
Brand	JOUNJIP
Model Number	2023
Material	Satin Chrome (Handle Material: Rubber)
Color	Satin Chrome
Product Dimensions	4"L x 2.5"W
Exterior Finish	Rust Proof Satin Chrome
Specific Uses	Fence gate, Door entries, Gates, Backyards, Garages, Windows
Special Feature	Outdoor weather proof (not salt water proof)
Lock Type	Combination Lock
Item Weight	4.27 pounds (1.94 Kilograms)
Hand Orientation	Adjustable
Power Source	No power needed (No batteries required)
Door Thickness Range	1 3/8" - 2 3/8"

---

## WARRANTY AND SUPPORT

Your JOUNJIP Double-Sided Mechanical Keyless Combination Lever Handle Door Lock comes with a **1 Year Manufacturer Warranty**.

For technical assistance, installation questions, or warranty claims, please refer to the contact information provided in your product packaging or visit the official JOUNJIP website. JOUNJIP is committed to providing excellent customer service and support for their products.