



Manuals.plus /

› BearHoHo /

› BearHoHo Body Bridge Prop with Audio Instruction Manual

## BearHoHo BH

# BearHoHo Body Bridge Prop with Audio Instruction Manual

Model: BH

## INTRODUCTION

---

The BearHoHo Body Bridge Prop with Audio is an interactive puzzle designed for escape room games. This prop requires 1 to 5 players to form a conductive circuit by holding hands and touching two electrodes, acting as a 'human bridge' to activate an electromagnetic lock. This manual provides detailed instructions for setup, operation, and troubleshooting to ensure proper functionality.

## PACKAGE CONTENTS

---

Verify that all components are present in your package:

- 1 x Controller with Audio Module
- 1 x 12V Power Adapter
- 1 x Hand Hold Sensor (with 2 clips/electrodes)



Figure 1: Included components of the Body Bridge Prop.

## SETUP INSTRUCTIONS

Follow these steps to correctly set up your Body Bridge Prop:

1. **Connect the Hand Hold Sensor:** Plug the hand hold sensor cable into the designated input port on the controller. The sensor consists of two wires ending in clips, which serve as electrodes.
2. **Connect the Electromagnetic Lock:** The prop is designed to control a 12V electromagnetic (EM) lock. Connect the red wire of your EM lock to the **NC** (Normally Closed) port on the controller. Connect the black wire of your EM lock to the **COM** (Common) port on the controller.
3. **Connect the Power Adapter:** Plug the 12V power adapter into the controller's power input port. Then, connect the power adapter to a standard electrical outlet.



Figure 2: Electromagnetic Lock Connection Diagram.

The clips of the hand hold sensor can be connected to larger conductive objects if desired, or players can directly hold the clips. Ensure good electrical contact for reliable operation.

## OPERATING INSTRUCTIONS

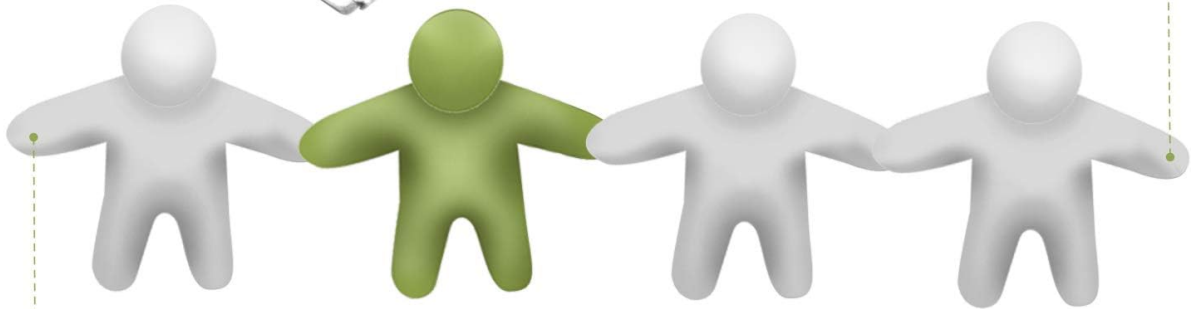
The Body Bridge Prop is activated by players forming a complete circuit. Here's how it works:

1. **Player Interaction:** One player holds one electrode (clip) in one hand. Another player holds the second electrode (clip) in one hand. The players then hold hands with each other, forming a chain.
2. **Circuit Completion:** When 1 to 5 players hold hands to create a continuous conductive path between the two electrodes, the circuit is completed.
3. **Unlocking Mechanism:** Upon successful circuit completion, the prop will trigger the connected 12V electromagnetic lock to unlock. Audio cues will indicate successful activation.

# HOLD HANDS TO RELEASE EM LOCK

Support teamwork (5 players at most)

Hold the other metal clip, or good  
conductor connect to the clip



Hold one metal clip, or good  
conductor connect to the clip

Figure 3: Concept of players forming a human bridge.



## HOLD HANDS TO UNLOCK

Player should to use their hands as bridge  
to release the EM lock

Figure 4: Hands holding electrodes to unlock.

### Reset Modes

The controller supports three different reset methods, which can be configured using the DIP switches on the controller board. Refer to the 'Troubleshooting and Configuration' section for details on adjusting these settings.

### MAINTENANCE

---

To ensure the longevity and reliable operation of your Body Bridge Prop, follow these general maintenance guidelines:

- Keep the controller and sensors clean and dry. Avoid exposure to liquids or excessive moisture.
- Regularly inspect all cables and connections for any signs of wear or damage. Replace damaged components immediately.
- Store the prop in a cool, dry environment when not in use.

### TROUBLESHOOTING AND CONFIGURATION

---

This section addresses common issues and configuration options for your prop.

## Common Issues

- **Prop Not Activating:**

- Ensure all connections (power, sensor, EM lock) are secure and correct. Refer to the 'Setup Instructions'.
- Verify that players are forming a complete and continuous circuit. Ensure good skin contact with the electrodes and between players' hands.
- Check the 12V power supply is functioning correctly.

- **No Audio Output:**

- Ensure the audio module is correctly connected to the controller.
- Check if the audio volume is set appropriately.

## Configuring Reset Mode

The controller features DIP switches to modify the reset behavior of the prop. The specific configuration for each reset mode is typically indicated on the controller itself or in supplementary documentation. Adjust these switches carefully according to your desired game flow.



Figure 5: Controller DIP switches for reset mode configuration.

## Turning Off Beep Sound

If the prop emits a beep sound that is not desired, there is a setting to disable it. Consult the controller's markings or specific product documentation for the exact switch or button to turn off the beep sound.



Figure 6: Location of the beep sound disable switch.

## SPECIFICATIONS

<b>Brand Name</b>	BearHoHo
<b>Model Name</b>	Body Bridge Prop with Audio
<b>Model Number</b>	BH
<b>Power Input</b>	12V DC
<b>Controlled Lock Type</b>	12V Electromagnetic Lock
<b>Number of Players Supported</b>	1-5
<b>Material Type</b>	Plastic
<b>Item Dimensions</b>	4.72 x 3.2 x 1.57 inches
<b>Item Weight</b>	0.3 Pounds

## WARRANTY AND SUPPORT

For warranty information or technical support, please contact BearHoHo customer service through your original point of purchase. Keep your purchase receipt as proof of purchase.