

## Tecmojo 6U/Glass Door Black

# Tecmojo 6U Wall Mount Server Cabinet Instruction Manual

Brand: Tecmojo | Model: 6U/Glass Door Black

## 1. INTRODUCTION

This manual provides comprehensive instructions for the assembly, installation, operation, and maintenance of your Tecmojo 6U Wall Mount Server Cabinet. Designed for IT network equipment and A/V devices, this cabinet offers a secure and organized solution for your server and networking needs. Please read this manual thoroughly before proceeding with installation to ensure proper setup and safe operation.

## 2. PRODUCT OVERVIEW AND FEATURES

The Tecmojo 6U Wall Mount Server Cabinet is engineered for efficiency and security, providing a robust enclosure for your valuable IT equipment. Key features include:

- **Space-Saving Design:** 6U wall mount configuration with dimensions of 13.78" H x 21.65" W x 17.72" D, and a maximum mounting depth of 14.2".
- **Enhanced Security:** Lockable glass door and side panels prevent unauthorized access. The front door can be reversed to open from either side.
- **Easy Equipment Configuration:** Features fully adjustable mounting rails and numbered U positions with square holes for straightforward equipment mounting.
- **Durable Construction:** Made of high-quality cold rolled steel, capable of holding up to 110 lbs (50 kg).
- **Efficient Cooling:** Includes a cooling fan and side ventilation holes to maintain optimal temperature.
- **Cable Management:** Top and bottom punch-out panels facilitate easy cable access and management.
- **Compliance:** PCI & HIPPA and EIA/ECA-310-E compliant.

### Product Visuals



Figure 2.1: Front view of the Tecmojo 6U Wall Mount Server Cabinet, showcasing its lockable glass door and sturdy construction. This image displays the overall appearance of the server cabinet, highlighting its compact design and the transparent front door, which allows for easy monitoring of internal components.

## Standard Wall Mount Server Cabinet Designed for Cooling



Figure 2.2: Detailed features of the server cabinet, including cooling fan, cable management panels, and security aspects.

This diagram illustrates the various functional components of the cabinet, such as the top-mounted cooling fan for heat dissipation, removable cover panels for cable routing, lockable door and side panels for security, and side ventilation holes for improved airflow. It also shows the reversible nature of the front door.

## Standard Wall Mount Server Rack

Made of heavy duty steel, the cabinet can hold up to 110 lbs (50 kg)

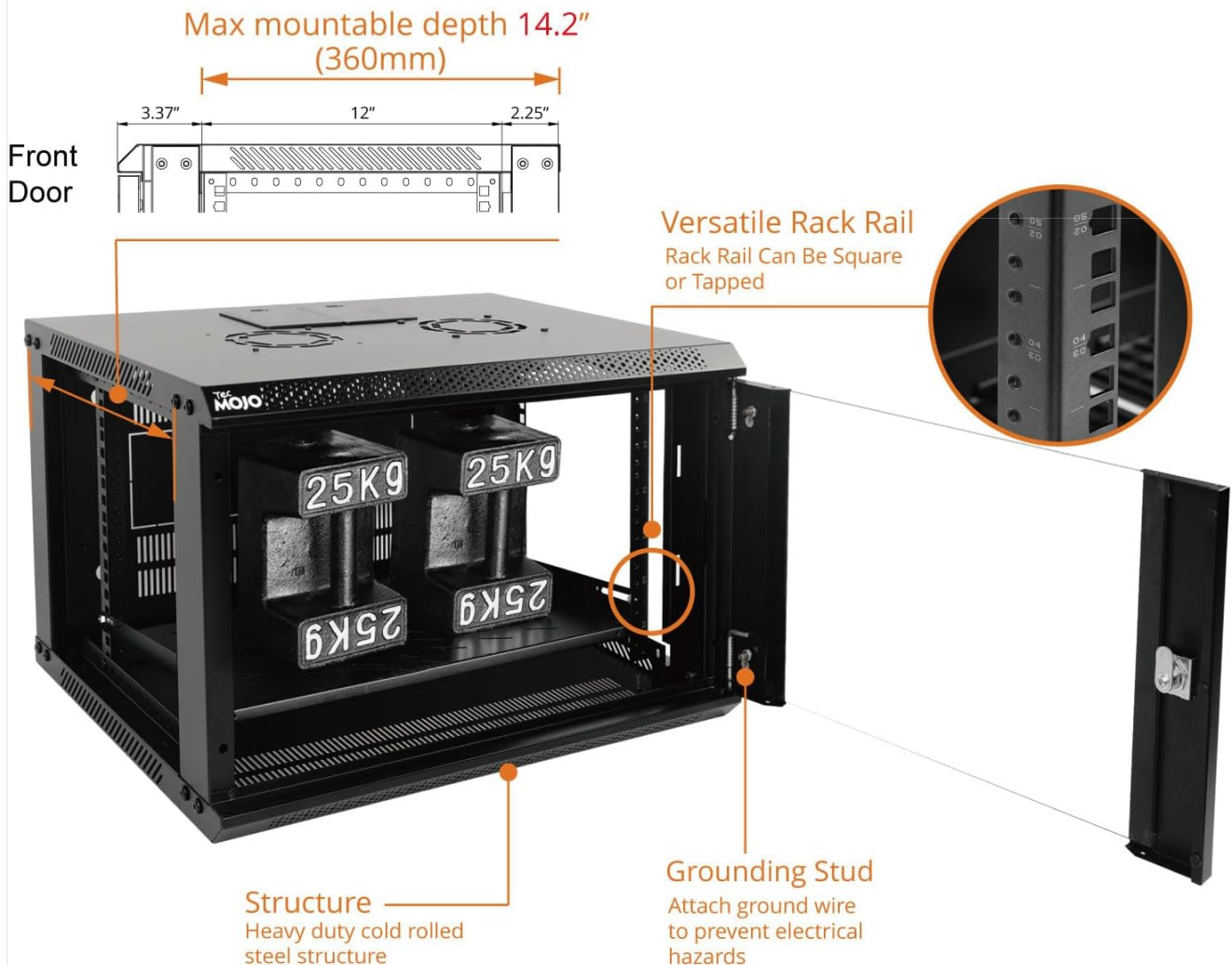


Figure 2.3: Internal structure and load-bearing capabilities of the server cabinet.

This image provides a view of the cabinet's interior, emphasizing its heavy-duty cold rolled steel structure, maximum mountable depth of 14.2 inches, versatile rack rails (square or tapped), and the grounding stud for electrical safety. It visually demonstrates the cabinet's capacity to hold significant weight.

### 3. WHAT'S INCLUDED

Verify that all components are present in your package before beginning assembly:

# PRODUCT INCLUDES



Figure 3.1: All components included with the Tecmojo 6U Wall Mount Server Cabinet.

The package contains the main cabinet components, an instruction manual, 10-32 screws (x10), 10-32 cage nuts (x10), two keys for the lockable door, and one cooling fan.

- Main Cabinet Components (unassembled)
- Instruction Manual
- 10-32 Screws (x10)
- 10-32 Cage Nuts (x10)
- Keys (x2)
- Cooling Fan (x1)

## 4. SETUP AND INSTALLATION

Follow these steps for proper assembly and wall mounting of your server cabinet. For a visual guide, please refer to the official assembly video below.

## Assembly Steps:

1. **Assemble Front Frames & Back Cover:** Begin by attaching the front frames to the back cover.
2. **Put on Top Cover:** Secure the top cover to the assembled base.
3. **Fix Joints on Both Sides:** Ensure all side joints are securely fastened with the provided screws.
4. **Fasten Rack Rails:** Install and secure the versatile rack rails inside the cabinet.
5. **Install Side Panels:** Attach the side panels to the cabinet structure.
6. **Install Front Glass Door:** Mount the glass front door. It can be installed to open from either the left or right side.

## Wall Mounting:

1. **Mark Mounting Holes:** Use the included mounting hole drilling template to accurately mark the drill points on your wall. Ensure the 16-inch spacing is maintained for stud placement.
2. **Screw Cabinet to Wall:** Securely fasten the cabinet to the wall using appropriate hardware for your wall type (not all mounting hardware may be included, consult a professional if unsure).

## Installation Video Guide:

Your browser does not support the video tag.

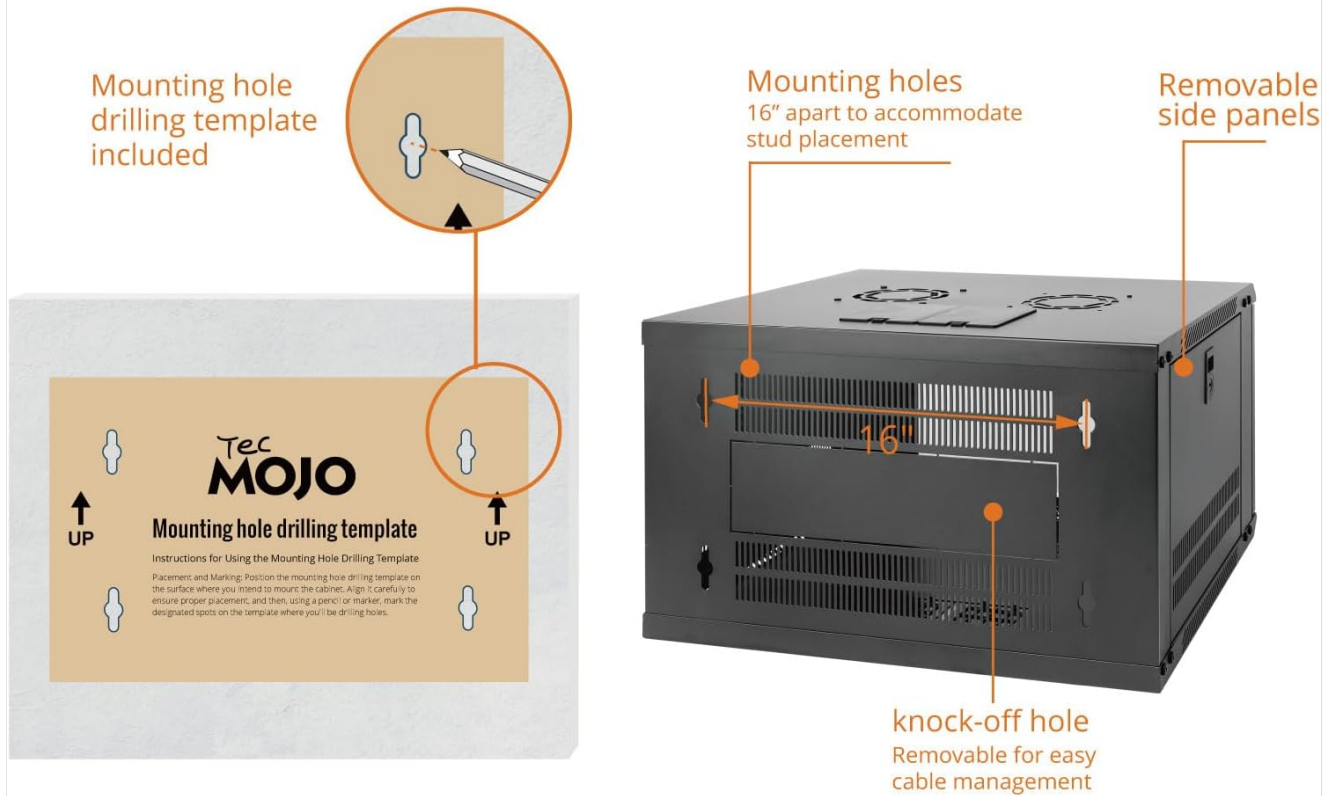
This video provides a step-by-step visual guide for assembling and installing your Tecmojo Standard Series Wall Mount Server Cabinet. It covers the entire process from unboxing to final wall mounting.

## Mounting Template Visual:



# 6U Wall Mount Server Cabinet

## Auxiliary drilling template for easy installation



Easy Installation



Space Saving



Maximum Weight  
Capacity of 110lbs (50kg)



EIA/ECA-310-E  
Compliant



Flat-packed

Figure 4.1: Mounting hole drilling template for accurate wall installation.

This image illustrates the use of the provided mounting template to mark the precise locations for drilling holes on your wall, ensuring proper alignment and secure attachment of the cabinet.

For detailed diagrams and additional installation information, please refer to the official [Installation Manual \(PDF\)](#).

## 5. OPERATING INSTRUCTIONS

Once installed, the Tecmojo server cabinet provides a secure environment for your equipment. Consider the following for optimal operation:

- **Equipment Placement:** Distribute equipment weight evenly across the rack rails. Utilize shelves for non-rack-mountable devices.
- **Cable Management:** Use the top and bottom cable entry points to route cables neatly. Proper cable management improves airflow and simplifies maintenance.
- **Airflow:** Ensure adequate space around the cabinet for proper air circulation. The built-in cooling fan assists in maintaining internal temperatures.

- **Security:** Always lock the front glass door and side panels to protect your equipment from unauthorized access.

## 6. MAINTENANCE

Regular maintenance ensures the longevity and optimal performance of your Tecmojo server cabinet:

- **Cleaning:** Periodically wipe down the exterior surfaces with a soft, damp cloth. Avoid abrasive cleaners.
- **Fan Check:** Inspect the cooling fan regularly for dust buildup. Clean the fan blades gently to ensure efficient operation.
- **Hardware Inspection:** Annually check all screws and fasteners to ensure they remain tight. Re-tighten if necessary.
- **Cable Inspection:** Verify that cables are not pinched or damaged, and that cable ties are not excessively tight.

## 7. TROUBLESHOOTING

Here are solutions to common issues you might encounter:

Problem	Possible Cause	Solution
Cabinet Overheating	Blocked ventilation, fan malfunction, excessive equipment heat.	Ensure side vents are clear. Check if the cooling fan is operating. Reduce equipment density if possible.
Door/Side Panel Not Locking	Misalignment, damaged lock mechanism.	Check for proper alignment of the door/panel. Inspect the lock for any obstructions or damage.
Unstable Cabinet After Mounting	Improper wall anchors, loose mounting screws, uneven wall surface.	Verify that appropriate wall anchors were used for your wall type. Re-tighten all mounting screws. Ensure the wall surface is flat.

## 8. SPECIFICATIONS

Detailed technical specifications for the Tecmojo 6U Wall Mount Server Cabinet:



## SPECIFICATIONS

Heavy Duty Cold Rolled Steel structure  
Weight Capacity: 110lbs  
Reversible Locking Glass Door

Dimensions: 21.7"L x 17.7"Dx13.8" H  
6U Rack Space  
EIA/ECA-310-E Compliant

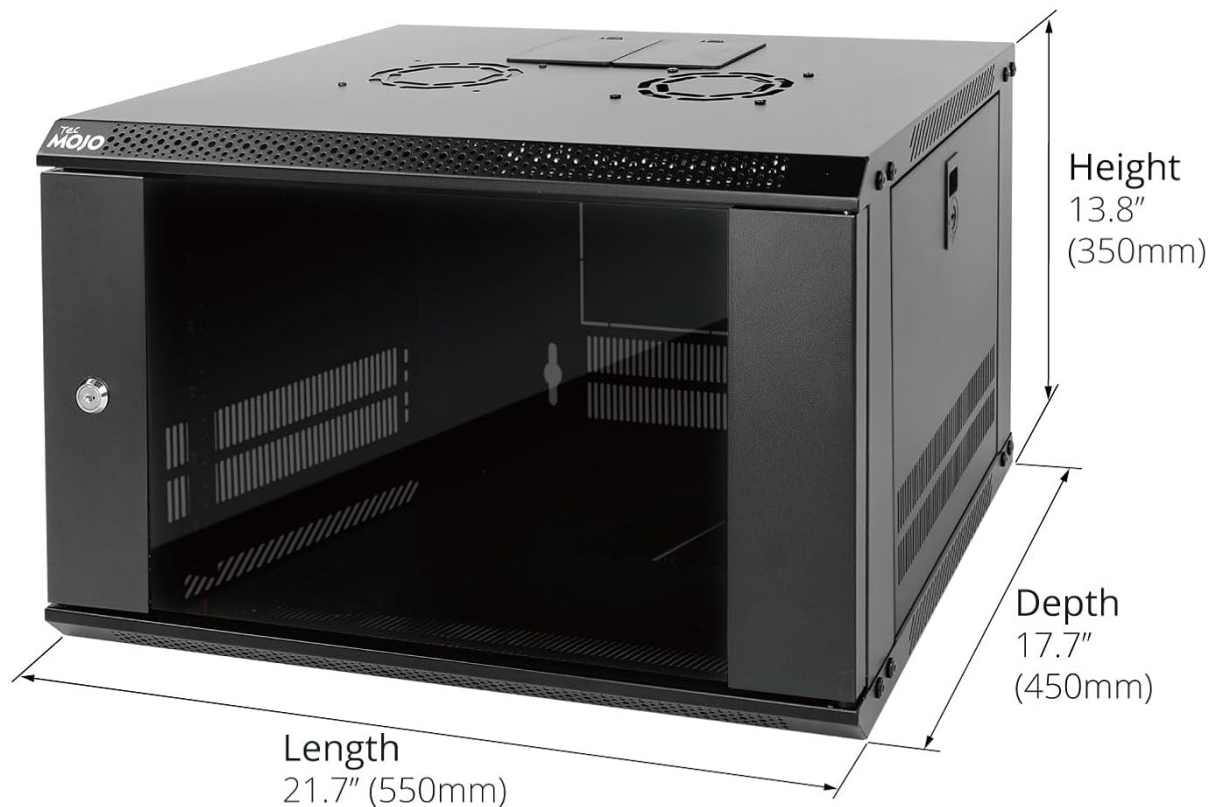


Figure 8.1: Key dimensions and specifications of the server cabinet.

This image provides a visual representation of the cabinet's height, length, and depth, along with its weight capacity and rack unit size.

- **Product Dimensions:** 17.7"D x 21.7"W x 13.8"H (450mm Depth)
- **Item Weight:** 28.6 pounds
- **Size:** 6U/Glass Door
- **Material:** Alloy Steel (Heavy Duty Cold Rolled Steel)
- **Color:** Black
- **Weight Capacity:** Up to 110 lbs (50 kg)
- **Compliance:** EIA/ECA-310-E Compliant
- **Manufacturer:** Tecmojo
- **ASIN:** B0BSB242CM

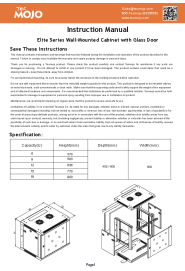

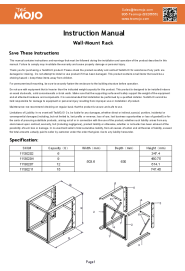
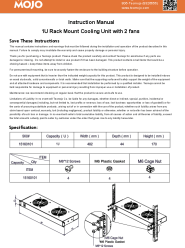
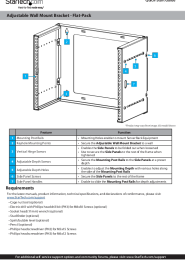
## 9. WARRANTY AND SUPPORT

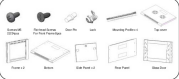
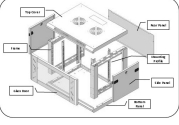
For warranty information and technical support, please contact Tecmojo directly through their official channels or

refer to the warranty card included with your product. Keep your purchase receipt for warranty claims.

**Tecmojo Customer Support:** Refer to the contact information provided in your product packaging or visit the official Tecmojo website.

Related Documents - 6U/Glass Door Black

	<p><a href="#">Tecmojo Elite Series Wall-Mounted Cabinet Instruction Manual</a></p> <p>Instruction manual for the Tecmojo Elite Series Wall-Mounted Cabinet with Glass Door. Includes specifications, safety warnings, and assembly instructions for network rack enclosures.</p>
	<p><a href="#">LinkPower LINK-6U-450 19-inch Wall Cabinet: Technical Specifications and Installation Guide</a></p> <p>Detailed technical specifications and installation instructions for the LinkPower LINK-6U-450 19-inch wall cabinet. Features include 6U height, 600mm width, 450mm depth, 60kg static load, IP21 protection, and tempered glass doors.</p>
	<p><a href="#">TecMOJO Wall-Mount Rack Instruction Manual - Installation Guide</a></p> <p>Comprehensive instruction manual for TecMOJO Wall-Mount Racks. Includes safety guidelines, specifications, and step-by-step installation instructions for models 11130202, 11130204, 11130207, and 11130211.</p>
	<p><a href="#">Tecmojo 1U Rack Mount Cooling Unit with 2 Fans - Instruction Manual</a></p> <p>Instruction manual for the Tecmojo 1U Rack Mount Cooling Unit with 2 fans. Includes specifications, safety warnings, and installation guidance for IT and network rack environments.</p>
	<p><a href="#">StarTech.com Adjustable Wall Mount Bracket - Flat-Pack Quick-Start Guide</a></p> <p>Quick-start guide for the StarTech.com Adjustable Wall Mount Bracket - Flat-Pack, detailing features, requirements, package contents, assembly, and wall mounting instructions for server and networking equipment.</p>

<div><div>Assembly Instructions</div><div><div>300 Assembly and disassembly</div><div><div></div><div><div>300 Installation</div><div></div></div></div></div></div>	<h3><a href="#">Rack Cabinet Assembly Instructions</a></h3> <p>Detailed assembly instructions for a rack cabinet, including parts list and step-by-step guidance for frame, mounting profile, door, and panel installation.</p>
--	---