

Micro Touch MTTTBHS

Microtouch Titanium Electric Head Shaver User Manual

Model: MTTTBHS

INTRODUCTION

The Microtouch Titanium Electric Head Shaver is designed for fast, easy, and comfortable head and face shaving. Featuring five independent floating heads, this shaver adapts to the contours of your head for a smooth, close shave without nicks, cuts, or bumps. It is suitable for both wet and dry shaving and includes a built-in hair capture chamber for convenient cleanup.

Key features of your Microtouch Titanium Electric Head Shaver include:

- **5 Stainless Steel Titanium Bonded Independent Floating Heads:** Provides extensive coverage for efficient shaving.
- **Hypoallergenic Blades:** German Stainless-Steel Titanium coated blades resist dulling and are gentle on skin.
- **Wet/Dry Shaving Capability:** Water-resistant design allows for versatile use.
- **Built-in Hair Capture Chamber:** Collects trimmings for easy disposal.
- **Lithium-Driven Battery:** Offers approximately 80 minutes of continuous run time on a full charge.
- **Travel Lock Feature:** Prevents accidental activation during transport.

SAFETY INFORMATION

Please read and understand all safety instructions before using the Microtouch Titanium Electric Head Shaver.

- **Do Not Submerge:** While the shaver is IPX6 water-resistant for wet/dry shaving, it should not be fully submerged in water.
- **Charging:** Use only the provided charging cable. Ensure the shaver is dry before charging.
- **Children:** Keep out of reach of children. This appliance is not intended for use by persons with reduced physical, sensory, or mental capabilities unless supervised.
- **Damage:** Do not use the shaver if it is damaged or malfunctioning. Contact customer support for assistance.
- **Cleaning:** Always turn off and unplug the shaver before cleaning.

SETUP

Unboxing and Initial Inspection

Carefully remove all components from the packaging. Inspect the shaver and accessories for any signs of damage. The package typically includes the Microtouch Titanium Head Shaver unit, a cleaning brush, and a USB charging cable.



Image: The retail packaging for the Microtouch Titanium Head Shaver, highlighting its key features like non-slip grip, 5 flexible heads, titanium-coated heads, water resistance, and 80-minute run time.

Charging the Shaver

Before first use, fully charge the shaver. Connect the USB charging cable to the shaver's charging port and plug the other end into a compatible USB power source (e.g., computer USB port, wall adapter). The charging indicator light will provide feedback on the charging status. A full charge provides approximately 80 minutes of cordless operation.

Familiarizing with the Shaver

Take a moment to understand the shaver's design. Note the five flexible rotary shaving heads and the ergonomic body designed for comfortable grip and control.



Image: A close-up view of the Microtouch Titanium Head Shaver's top, showcasing its five circular rotary blades designed for efficient shaving.

OPERATING INSTRUCTIONS

Preparing for Shaving

For best results, ensure your hair is trimmed to a short length (ideally 1/16 inch or less) before using the shaver. The shaver can be used on dry skin or with shaving cream/gel for a wet shave.

Shaving Your Head

Turn on the shaver. Gently press the shaver heads against your scalp and move the shaver in small circular motions. The five floating heads will contour to the curves of your head, ensuring maximum skin contact and a close shave. Shave in any direction that feels comfortable and effective.



Image: A man demonstrating the use of the Microtouch Titanium Head Shaver on the top of his head, showing the ergonomic grip and shaver's contact with the scalp.

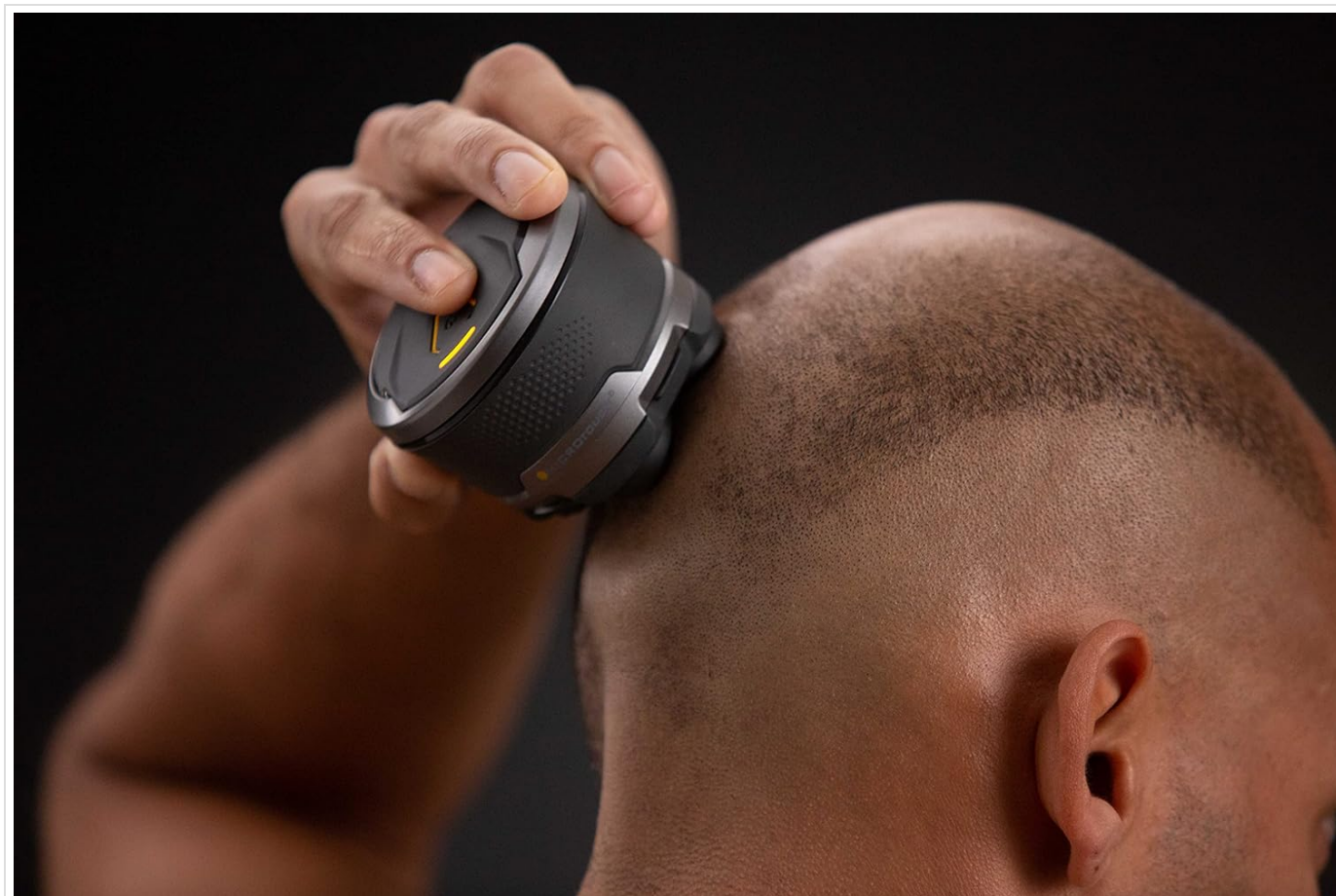


Image: A man using the Microtouch Titanium Head Shaver to shave the side of his head, illustrating the shaver's ability to reach different areas.



Image: A man using the Microtouch Titanium Head Shaver to shave the back of his neck, demonstrating its versatility for different areas of the head.

Shaving Your Face

The shaver can also be used for facial hair. Apply the same circular motion technique, ensuring the floating heads adapt to your facial contours for a comfortable shave.



Image: A man using the Microtouch Titanium Head Shaver to shave his cheek, showing its application for facial hair removal.



Image: Another man using the Microtouch Titanium Head Shaver on his face, highlighting the shaver's compact design and ease of handling.

MAINTENANCE

Cleaning the Shaver

Regular cleaning ensures optimal performance and hygiene. The shaver features a built-in hair capture chamber for easy cleanup.

1. Turn off the shaver.
2. Gently twist and pull the shaving head assembly to detach it from the main body.
3. Empty the collected hair from the chamber.
4. Use the provided cleaning brush to remove any remaining hair from the blades and inside the chamber.
5. For a more thorough clean, the shaving head can be rinsed under running water. Ensure it is completely dry before reattaching or charging.
6. Reattach the shaving head assembly by aligning it with the main body and twisting until it clicks into place.

EASY TO CLEAN REMOVEABLE HEAD



Image: An exploded view of the Microtouch Titanium Head Shaver, illustrating how the shaving head detaches from the main body for easy cleaning and maintenance.

Blade Care

The titanium-coated blades are designed for durability and to resist dulling. With proper cleaning, they should maintain their sharpness for an extended period. If you notice a decrease in shaving performance, replacement heads are available.

TROUBLESHOOTING

If you encounter issues with your Microtouch Titanium Electric Head Shaver, refer to the following common problems and solutions:

Problem	Possible Cause	Solution
Shaver does not turn on.	Battery is depleted.	Charge the shaver fully.
Shaver does not turn on.	Travel lock is activated.	Deactivate the travel lock (refer to product instructions for specific method, usually holding power button).
Poor shaving performance / pulling hair.	Blades are clogged with hair.	Clean the shaving heads thoroughly as per maintenance instructions.
Poor shaving performance / pulling hair.	Hair is too long.	Trim hair to a shorter length (e.g., 1/16 inch) before shaving.
Poor shaving performance / pulling hair.	Blades are worn.	Consider replacing the shaving head assembly.
Shaver not charging.	Charging cable or power source issue.	Ensure the USB cable is securely connected and try a different USB port or power adapter.

If the problem persists after trying these solutions, please contact Micro Touch customer support.

SPECIFICATIONS

Feature	Detail
Model Name	Head Shaver
Item Model Number	MTTTBHS
Power Source	Battery Powered (Lithium Ion)
Battery Life	Approx. 80 minutes continuous run time
Special Features	Rechargeable, Water Resistant (IPX6)
Recommended Uses	Scalp, Face
Dimensions (Package)	8.86 x 5.31 x 3.21 inches

Feature	Detail
Weight (Package)	12.63 ounces
UPC / GTIN	754502051366
Manufacturer	MicroTouch





WARRANTY AND SUPPORT



Specific warranty details for the Microtouch Titanium Electric Head Shaver are not included in this manual. For information regarding warranty coverage, terms, and conditions, please refer to the documentation provided with your purchase or visit the official Micro Touch website.

For customer support, technical assistance, or to inquire about replacement parts, please contact Micro Touch directly through their official channels. You may also find additional resources, including a downloadable PDF user manual, on their website or the product's listing page.

Official User Manual (PDF): [Download PDF](#)

Related Documents - MTTTBHS

 <p>MicroTouch Solo Titanium User Manual cover showing the product and a table of contents.</p>	<p>MicroTouch Solo Titanium User Manual and Instructions</p> <p>Comprehensive user manual and instructions for the MicroTouch Solo Titanium, covering setup, charging, operation, maintenance, and safety warnings.</p>
 <p>MicroTouch Titanium Max Precision Trimmer User Manual cover showing the product and text.</p>	<p>MicroTouch Titanium Max Precision Trimmer User Manual</p> <p>User manual for the MicroTouch Titanium Max precision trimmer, providing instructions on usage, safety, maintenance, and disposal. Features detailed guidance for optimal hair trimming results.</p>
 <p>MicroTouch Titanium Trim User Manual cover showing the product and text.</p>	<p>MicroTouch Titanium Trim User Manual: Operation, Safety, and Maintenance</p> <p>Detailed user manual for the MicroTouch Titanium Trim hair trimmer. Includes instructions on extendable handle use, care, safety precautions, battery insertion, comb attachment selection, trimming techniques for beard, head, and body, and a list of included accessories. Visit TitaniumTrim.com for videos.</p>
 <p>MicroTouch Autofocuser Operating Instructions cover showing the product and text.</p>	<p>MicroTouch Autofocuser Operating Instructions</p> <p>Comprehensive operating instructions for the MicroTouch Autofocuser, detailing installation, software setup, manual and automatic focusing, temperature compensation, and firmware updates. Compatible with Starlight Instruments Feathertouch focusers and other brands.</p>

 <p>The image shows the front cover of the MicroTouch IC-215P-AA2 Touch Computer User Manual. It features the MicroTouch logo at the top left, followed by the text 'USER MANUAL', 'TOUCH COMPUTER', and 'IC-215P-AA2'. Below this is a photograph of the touch computer device. At the bottom left, the text 'Rev 01/03/02 1' is visible.</p>	<p>MicroTouch IC-215P-AA2 Touch Computer User Manual</p> <p>Comprehensive user manual for the MicroTouch IC-215P-AA2 Touch Computer, covering setup, installation, specifications, safety, and troubleshooting. Ideal for retail and business applications.</p>
 <p>The image shows the front cover of the MicroTouch OF-120P-A1 Open Frame Touch Monitor User Manual. It features the MicroTouch logo at the top left, followed by the text 'OPEN FRAME TOUCH MONITOR' and 'OF-120P-A1'. Below this is a photograph of the open frame touch monitor. At the bottom left, the text 'Rev 01/03/02 1' is visible.</p>	<p>MicroTouch OF-120P-A1 Open Frame Touch Monitor User Manual</p> <p>User manual for the MicroTouch OF-120P-A1 open frame touch monitor, covering installation, setup, operation, specifications, and troubleshooting.</p>