

Manuals+

[Q & A](#) | [Deep Search](#) | [Upload](#)

manuals.plus /

› [Devoko](#) /

› [Devoko 160x60cm White Gaming Desk with Cable Management, Cup Holder, and Headphone Hook User Manual](#)

Devoko 2TG

Devoko 160x60cm White Gaming Desk User Manual

Model: 2TG

INTRODUCTION

Thank you for choosing the Devoko 160x60cm White Gaming Desk. This manual provides essential information for the safe assembly, operation, and maintenance of your new desk. Please read these instructions carefully before beginning assembly and keep them for future reference.

SAFETY INFORMATION

Warning: This desk is heavy (approximately 27 kg / 60 lbs) and requires careful assembly. Please read the assembly instructions thoroughly and follow them precisely to avoid injury or damage to the product.

- Ensure all components are present and undamaged before assembly.
- Assemble the desk on a soft, clean surface to prevent scratches.
- Do not overtighten screws during assembly.
- Keep small parts away from children.
- Do not stand or sit on the desk.
- Distribute weight evenly across the desktop.

PACKAGE CONTENTS

Verify that all the following items are included in your package:

- 1 x Devoko Gaming Desk (two-piece tabletop)
- 1 x Large Mouse Pad
- 1 x Cup Holder
- 1 x Headphone Hook
- 1 x Game Controller Rack
- 1 x Cable Management Box/Tray

- 1 x Assembly Tool Kit
- 1 x Assembly Instructions (this manual)

SETUP AND ASSEMBLY

Follow these steps to assemble your Devoko Gaming Desk. It is recommended to have two people for assembly due to the desk's weight and size.

1. **Unpack Components:** Carefully remove all parts from the packaging. Lay them out on a soft, clean surface to prevent scratches.
2. **Attach T-shaped Legs:** Secure the T-shaped leg frames to the underside of the tabletop sections using the provided screws and assembly tools. Ensure the triangular support structure is correctly aligned for maximum stability.
3. **Join Tabletop Sections:** Connect the two tabletop sections. Ensure they are flush and securely fastened with the designated connectors.
4. **Install Leveling Feet:** Screw the four adjustable non-slip leveling feet into the bottom of the T-shaped legs. Adjust them later to ensure the desk is stable on uneven floors.
5. **Attach Accessories:** Install the cup holder, headphone hook, game controller rack, and cable management box to their designated positions on the desk. Refer to the diagrams for correct placement.
6. **Place Mouse Pad:** Lay the large custom mouse pad over the desktop surface.
7. **Final Check:** Verify that all screws are tightened and the desk is stable. Adjust the leveling feet as needed.

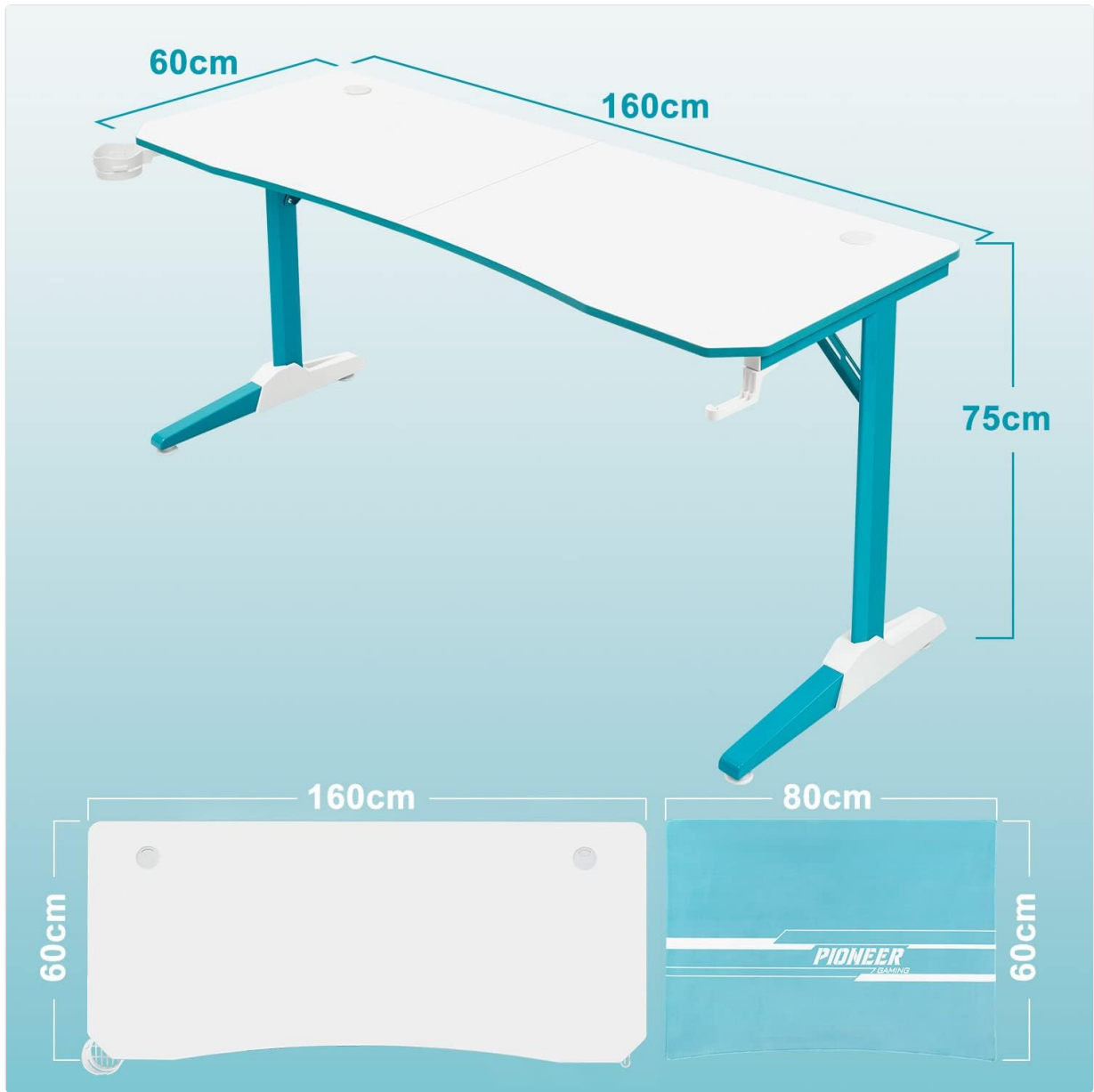


Figure 1: Desk dimensions and component layout.

STABILE GAMING TISCHFUBE

Verstellbereich 1-2cm

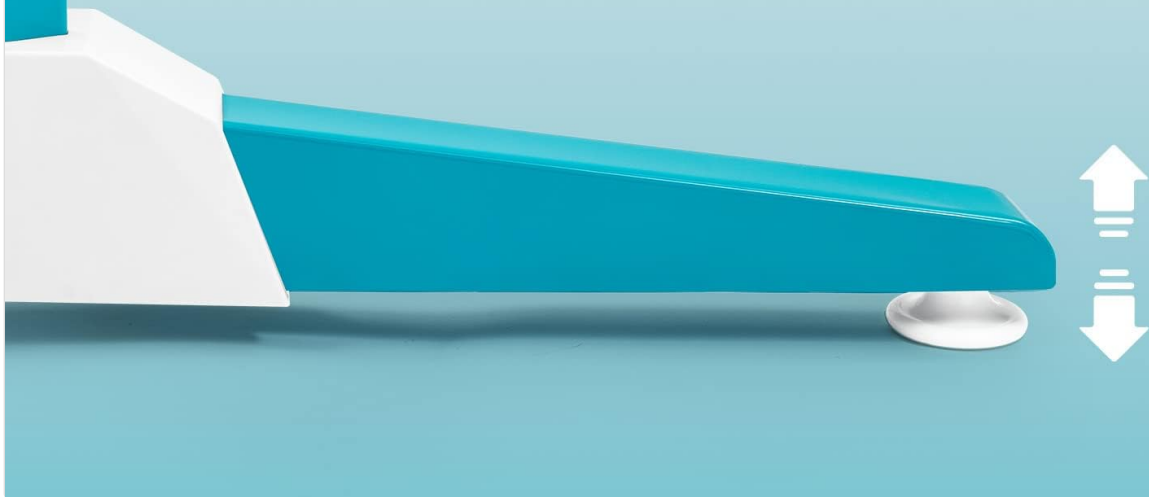
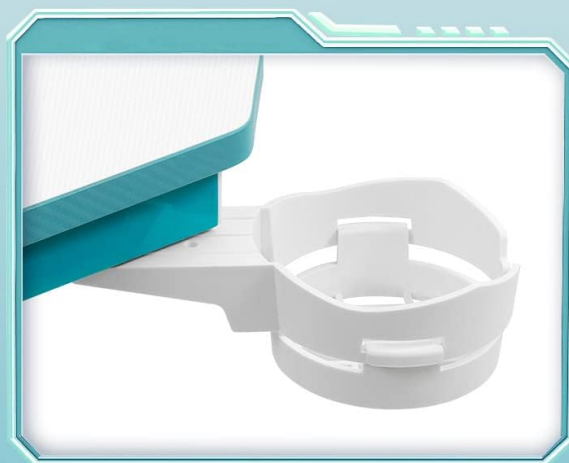


Figure 2: Adjustable leveling feet for stability.

OPERATING INSTRUCTIONS

Your Devoko Gaming Desk is designed for optimal functionality and comfort. Here's how to utilize its features:

- **Desktop Usage:** The spacious 160x60cm carbon fiber desktop provides ample room for multiple monitors, keyboards, mice, and other gaming peripherals. The surface is durable and textured for enhanced mouse tracking.
- **Cable Management:** Utilize the integrated cable management box/tray to route and conceal your cables, keeping your workspace tidy and organized.
- **Cup Holder:** Place your beverage in the attached cup holder to prevent spills and keep your drink within easy reach.
- **Headphone Hook:** Hang your gaming headset on the dedicated hook to keep it off the desk and easily accessible.
- **Game Controller Rack:** Store your game controllers on the rack to maintain an organized gaming setup.
- **Leveling Adjustment:** If the desk wobbles, adjust the individual leveling feet by rotating them until all four feet make firm contact with the floor and the desk is stable.



GETRANKEHALTER



HEADSETHLTERUNG

Figure 3: Integrated cup holder and headphone hook for convenience.



Figure 4: Rear view highlighting cable management features.

MAINTENANCE

To ensure the longevity and appearance of your Devoko Gaming Desk, follow these maintenance guidelines:

- **Cleaning:** Wipe the desk surface with a soft, damp cloth. Avoid abrasive cleaners or harsh chemicals that could damage the carbon fiber finish.
- **Spills:** The desk surface is waterproof. In case of spills, wipe them immediately with a dry cloth to prevent any potential damage or staining.
- **Tighten Fasteners:** Periodically check and tighten all screws and fasteners to maintain the desk's stability.
- **Avoid Excessive Weight:** Do not exceed the maximum weight capacity of 150 kg (330 lbs).
- **Protect from Heat:** Avoid placing hot items directly on the desk surface without a protective coaster.

TROUBLESHOOTING

If you encounter any issues with your Devoko Gaming Desk, refer to the following common problems and

solutions:

Problem	Possible Cause	Solution
Desk is wobbly	Uneven floor or loose fasteners.	Adjust the leveling feet until the desk is stable. Check and tighten all assembly screws.
Accessories (cup holder, headphone hook) are loose	Mounting screws are not tight enough.	Ensure the mounting screws for the accessories are securely tightened.
Tabletop sections are not flush	Improper alignment during assembly.	Loosen the connectors between the tabletop sections, realign them, and then retighten.

If you experience problems not listed here or require further assistance, please contact Devoko customer support.

SPECIFICATIONS

Feature	Detail
Brand	Devoko
Model Number	2TG
Overall Dimensions (L x W x H)	160 cm x 60 cm x 75 cm (approx. 63 x 23.6 x 29.5 inches)
Color	White
Material Type	Carbon Fiber (desktop), Metal (frame)
Desk Design	Computer Desk / Gaming Desk
Shape	T-shaped legs
Item Weight	27 kg (approx. 60 lbs)
Maximum Capacity	150 kg (approx. 330 lbs)
Special Features	Adjustable Leveling Feet, Cable Management, Cup Holder, Headphone Hook, Game Controller Rack, Waterproof Mouse Pad
Room Type	Home Office, Bedroom

WARRANTY AND SUPPORT

Devoko is committed to providing high-quality products. While specific warranty details are not provided in this manual, please retain your proof of purchase for any warranty claims.

If you have any questions, encounter issues during assembly or use, or require further assistance, please do not hesitate to contact Devoko customer support. We are dedicated to helping you and ensuring your satisfaction with our product.

Contact information can typically be found on the product packaging or the official Devoko website.



Figure 5: Devoko Gaming Desk in a typical gaming setup.



Figure 6: Detailed view of the desk surface and accessories.