

[Manuals.plus](#) /

> [Topdeep](#) /

> Topdeep 5-in-1 15x15 inch Heat Press Machine User Manual

## Topdeep 5 in 1-15x15inch

# Topdeep 5-in-1 15x15 inch Heat Press Machine User Manual

Model: 5 in 1-15x15inch | Brand: Topdeep

## INTRODUCTION

---

This manual provides detailed instructions for the safe and efficient operation of your Topdeep 5-in-1 15x15 inch Heat Press Machine. This versatile device is designed for heat transfer applications on various items, including t-shirts, caps, ceramic plates, mugs, and other flat surfaces. Please read this manual thoroughly before initial use and retain it for future reference.

## PRODUCT FEATURES

---

- **Premium Quality Heating Plate:** Equipped with an advanced die-cast aluminum heating plate featuring a non-stick Teflon-coated surface to prevent scorching and ensure even heat distribution.
- **5-in-1 Combo Design:** Includes a 15x15 inch flat press for t-shirts, a 5.5"x3" hat press, an 11oz mug press, and two plate presses (5" and 6").
- **360° Rotation and Slide-Out Design:** The fully rotated 360-degree swing-away and bottom guide rail design allows the heating element to be safely moved aside, reducing accidental contact and simplifying attachment changes.
- **Precise Digital Control:** An LCD digital control box displays time and temperature (Fahrenheit or Celsius) for accurate settings. Features a temperature range of 30-450°F (0-250°C) and a timer range of 0-999 seconds. Includes overheat protection and an audible alarm.
- **Wide Range of Uses:** Suitable for various materials such as ceramics, glasses, cotton, flax, chemical fiber, and nylon.

## SAFETY INSTRUCTIONS

---

- Always operate the heat press on a stable, heat-resistant surface.
- Keep hands clear of the heating element during operation to prevent burns.
- Ensure proper ventilation in the work area.
- Unplug the machine when not in use or before cleaning.
- Do not leave the machine unattended while it is powered on.

## SETUP

Your heat press machine comes mostly pre-assembled. Follow these steps for initial setup:

1. Place the machine on a sturdy, flat, and heat-resistant surface.
2. Ensure the power switch is in the OFF position before plugging into a standard 110V outlet.
3. Connect the control panel to the main unit by sliding it onto the hooks and plugging in the corresponding cords.
4. Adjust the pressure knob on top to achieve the desired pressure for your specific material.



Image: The 5-in-1 Heat Press Machine with its various attachments, including the flat press, hat press, mug press, and plate presses.

## OPERATING INSTRUCTIONS

### Digital Control Panel

The digital control panel allows precise adjustment of temperature and time:

1. Turn on the power switch located on the side of the control box.
2. Press the 'SET' button to toggle between temperature and time settings.
3. Use the up and down arrow buttons to adjust the desired temperature (30-450°F / 0-250°C) and time (0-999 seconds).
4. Press 'SET' again to confirm your selection. The machine will begin heating to the set temperature.
5. You can switch between Fahrenheit and Celsius by pressing the corresponding button.



Image: A detailed view of the digital control panel, highlighting the temperature and time displays and adjustment buttons.

## Using the Flat Press (T-shirts, etc.)

For optimal results with the flat press:

1. Pre-heat the machine to the recommended temperature for your transfer material.
2. Place your garment or flat item onto the silicone pad on the slide-out platen. Ensure it is flat and wrinkle-free.
3. Position your transfer design onto the item. You may use heat-resistant tape to secure it.
4. Cover the design with a Teflon sheet or parchment paper.
5. Swing the heating element over the item and press the handle down firmly. The timer will start automatically.
6. Once the alarm sounds, lift the handle and swing the heating element away.
7. Carefully remove the Teflon sheet and your finished item. Allow it to cool completely.

## EASY TO USE

### Operation Steps



### MAIN STEPS FOR PRINTING

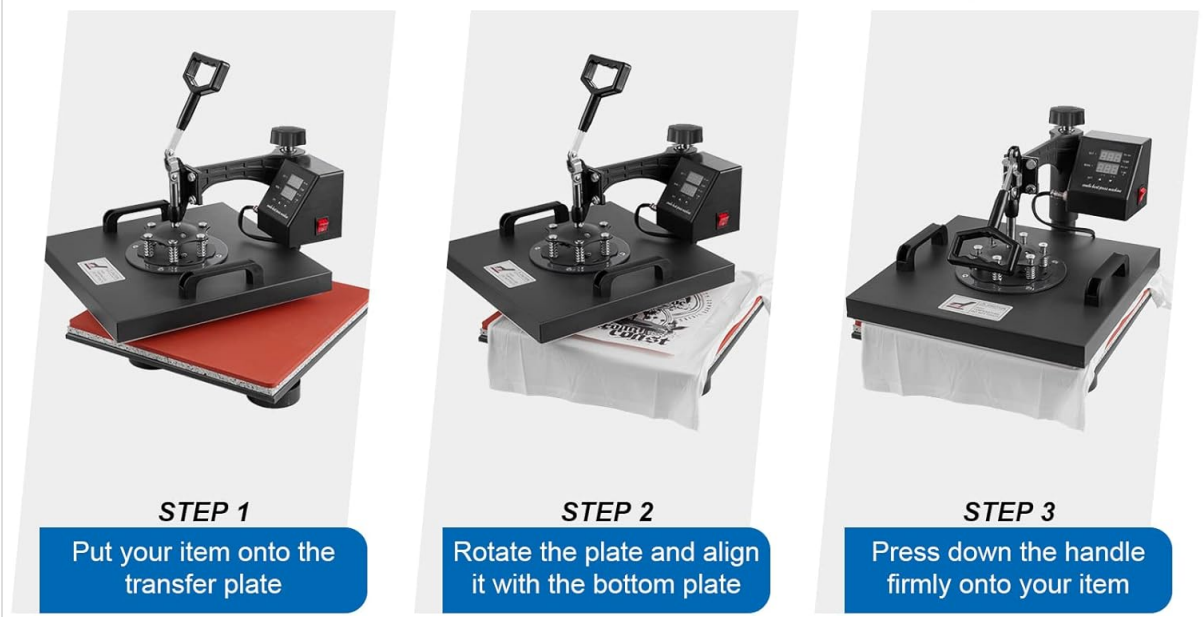


Image: Step-by-step visual guide demonstrating the process of applying a heat transfer design to a t-shirt using the flat press.

## Changing Attachments

The 360° rotation and quick-change mechanism allow for easy swapping of attachments:

1. Ensure the machine is unplugged and cooled down before changing attachments.
2. Unscrew the retaining nuts/bolts holding the current heating element in place.
3. Carefully remove the current heating element.
4. Attach the desired heating element (hat, mug, or plate press) by aligning it with the mounting points and securing it with the retaining nuts/bolts.
5. Plug in the corresponding connector for the new attachment to the control panel.

## Using the Hat Press

Attach the hat press element. Place the cap onto the curved platen, ensuring the transfer area is smooth. Position your design and cover with a Teflon sheet. Press down the handle for the recommended time and temperature.

## Using the Mug Press

Attach the mug press element. Place your mug into the cylindrical heating element. Secure the mug by adjusting the pressure. Press for the recommended time and temperature. Allow the mug to cool before handling.

## Using the Plate Press

Attach the appropriate size plate press element. Place your plate onto the platen. Position your design and cover with a Teflon sheet. Press down the handle for the recommended time and temperature.

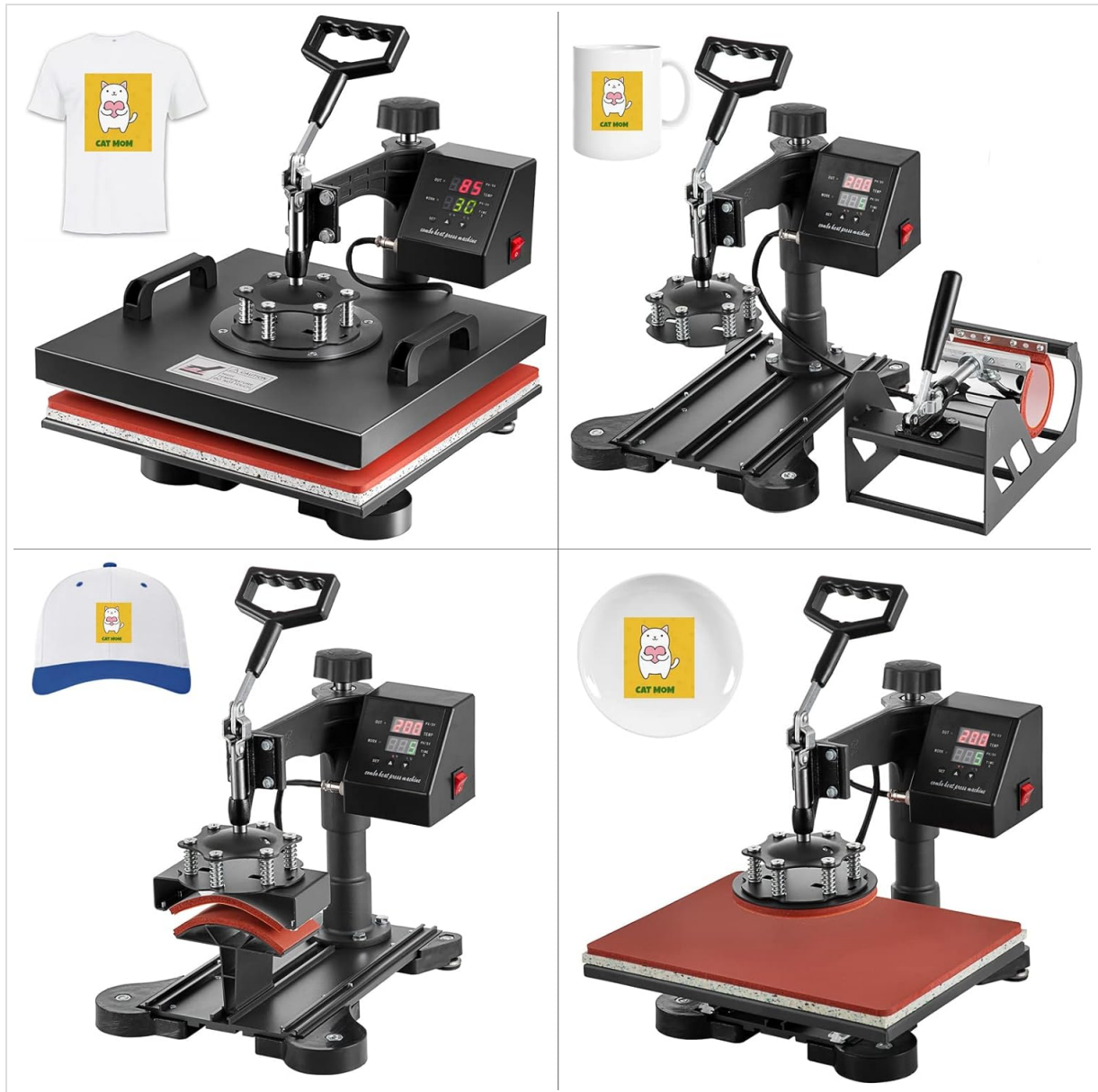


Image: The 5-in-1 Heat Press Machine shown with different attachments (flat press, mug press, hat press, plate press) assembled and ready for use.

## Official Product Video: 5 in 1 Heat Press Machine

Video: An overview of the 5-in-1 Heat Press Machine, demonstrating its features and various attachments.

## Official Product Video: Heat Press Machine 2 in 1 for T Shirts and Hats

Video: A demonstration of using a heat press machine for t-shirts and hats, showcasing the process and results.

## MAINTENANCE

---

- Regularly clean the non-stick Teflon surface with a soft cloth when the machine is cool.
- Inspect power cords and connections for any damage.
- Store the heat press in a dry, dust-free environment.

## TROUBLESHOOTING

---

Problem	Possible Cause	Solution
Machine not heating up	Power cord not connected, power switch off, faulty heating element.	Check power connection, turn on switch, contact support if element is faulty.
Uneven heat transfer	Uneven pressure, faulty heating element, wrinkled garment.	Adjust pressure knob, ensure garment is flat, contact support if element is faulty.
Design not sticking	Incorrect temperature/time, insufficient pressure, wrong transfer paper.	Verify settings with transfer material instructions, adjust pressure, use correct paper.

## SPECIFICATIONS

---

- **Model:** 5 in 1-15x15inch
- **Voltage:** 110 Volts
- **Wattage:** 1400 watts
- **Product Dimensions:** 17.2"L x 15.7"W x 20.3"H
- **Item Weight:** 39.9 pounds
- **Upper Temperature Rating:** 450 Degrees Fahrenheit
- **Material:** Aluminum, Cotton, Silicone, Sponge
- **Color:** Black
- **Manufacturer:** Topdeep

## PRODUCT SPECIFICATIONS

Gross Weight: 46.3 lb / 21 kg

Product Size:

15.7 X 17.2 X 20.3 INCH

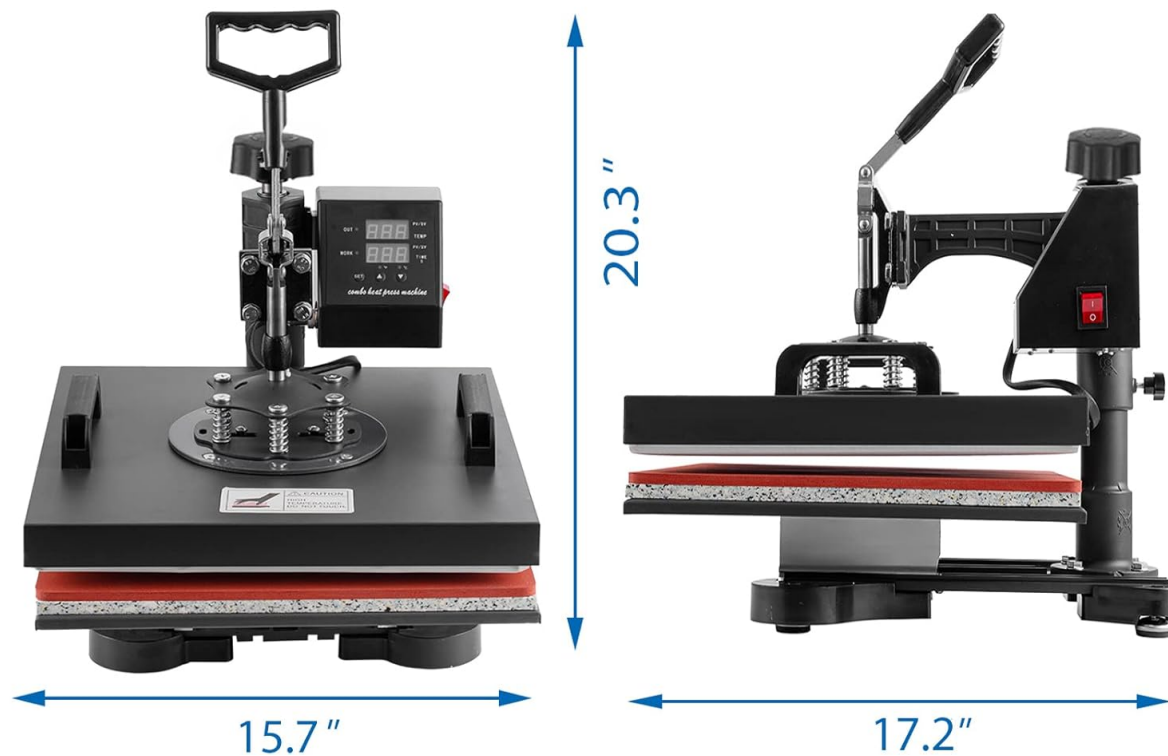


Image: Diagram illustrating the dimensions and weight of the Topdeep 5-in-1 Heat Press Machine.

## WARRANTY AND SUPPORT

This Topdeep heat press comes with a 3-year warranty. We also provide lifetime technical guidance and support. For any problems or inquiries, please contact customer service via Amazon message. Our customer service team will reply within 12 hours.