

manuals.plus /

› [proscenic](#) /

› [Proscenic WashVac F20 Cordless Wet Dry Vacuum Cleaner User Manual](#)

proscenic F20

Proscenic WashVac F20 Cordless Wet Dry Vacuum Cleaner User Manual

Model: F20

1. INTRODUCTION

This manual provides essential instructions for the safe and efficient operation, maintenance, and troubleshooting of your Proscenic WashVac F20 Cordless Wet Dry Vacuum Cleaner. Please read this manual thoroughly before first use and retain it for future reference.



Image 1.1: Proscenic WashVac F20 Cordless Wet Dry Vacuum Cleaner.

2. PACKAGE CONTENTS

Verify that all items listed below are included in your package. If any items are missing or damaged, please contact customer support.

- 1 x Proscenic WashVac F20 Wet Dry Vacuum Cleaner (Main Body and Handle Assembly)
- 1 x Clean Water Tank (1L capacity)
- 1 x Dirty Water Tank (1L capacity)
- 1 x Battery
- 1 x Cleaning Solution (500ml)
- 2 x HEPA Filter
- 2 x Roller Brush
- 1 x Cleaning Tool
- 1 x Adapter

- 1 x Charging Storage Base
- 1 x User Manual



Image 2.1: Illustrated view of all included components. This image shows the handle assembly, main body, clean water tank, dirty water tank, HEPA filters, charging base, battery, adapter, roller brushes, user manual, cleaning solution, and cleaning tool.

3. SETUP AND INITIAL USE

3.1 Assembly

1. **Attach the Handle:** Insert the handle assembly into the main body until it clicks securely into place.
2. **Install Water Tanks:** Ensure the clean water tank and dirty water tank are correctly inserted into their respective slots on the main body.
3. **Insert Battery:** Place the battery into its compartment until it locks.

3.2 Charging

1. **Place on Charging Base:** Position the vacuum cleaner on the charging storage base. Ensure the charging contacts align.

2. **Connect Adapter:** Plug the adapter into the charging base and then into a power outlet.
3. **Monitor Charging:** The LED display will indicate the charging status. A full charge takes approximately 4 hours. The battery can also be removed and charged separately.

4. OPERATING INSTRUCTIONS

4.1 Filling the Clean Water Tank

Before operation, fill the clean water tank with clean water. For enhanced cleaning, you may add the provided Proscenic cleaning solution according to the instructions on its bottle.

4.2 Powering On and Mode Selection

Press the power button to turn on the device. The Proscenic WashVac F20 features 4 cleaning modes:

- **Smart Mode:** Automatically detects wet and dry floor debris and adjusts suction power accordingly for optimal cleaning.
- **MAX Mode:** Provides maximum suction power for heavily soiled areas.
- Other modes may include specific suction or drying settings. Refer to the LED display for current mode indication.



Image 4.1: The LED display provides real-time information on cleaning modes (Smart, Max), battery level, Wi-Fi indicator, and error indicators (roller brush error, fan abnormal indicator).

4.3 Multi-Surface Cleaning

The WashVac F20 is designed for cleaning various hard floor surfaces, including wood, tile, marble, and concrete. It simultaneously vacuums, mops, and washes, effectively removing both dry debris and wet spills without scratching the floor.

Multi-Surface Floor Cleaning

The roller brush can clean dirty area on wood floor/tile surface/ cement floor etc hard floor and mop them as well.



Image 4.2: The vacuum cleaner effectively cleans wood, ceramic tile, marble, and cement floors, demonstrating its multi-surface capability.

4.4 Edge Cleaning

The unique Double Narrow Edge Design allows the vacuum cleaner to reach and clean edges and corners along walls and furniture, ensuring thorough cleaning within 8mm of obstacles.

Easy Reach and Clean the Edges and Corners along Walls

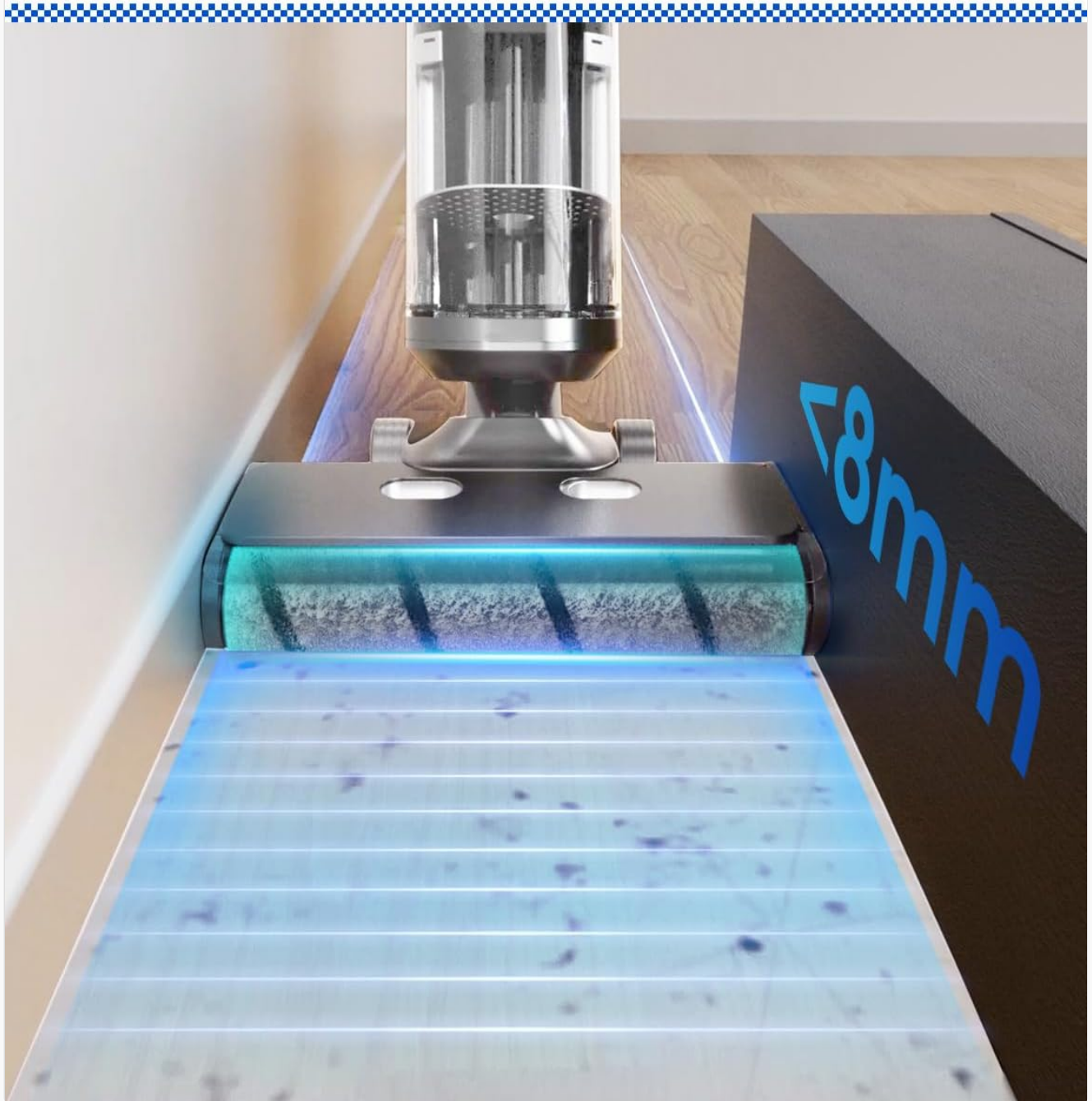


Image 4.3: Close-up view of the vacuum cleaner's brush head cleaning very close to a wall, highlighting its edge cleaning capability.

4.5 App Integration

Connect your WashVac F20 to the Proscenic application for additional features, including monitoring accessory life cycle, receiving error reports, and viewing cleaning data.

Check Status at AnyTime

Such as monitoring the accessories life cycle, error reports, cleaning data and rankings, etc.



Image 4.4: A user checking the status of the vacuum cleaner via the Proscenic mobile application, showing various monitoring options.

5. MAINTENANCE

5.1 Self-Cleaning Function

After each use, place the vacuum cleaner on its charging base and activate the one-touch self-cleaning function. This process cleans the roller brush, preventing odors and maintaining hygiene. The system also includes electrolyzed water sterilization and cold air drying.

One Touch Self-Cleaning

With various functions of Electrolyzed Water Sterilization, Self Drying, and Self Cleaning combined.



Image 5.1: The vacuum cleaner on its charging base, illustrating the self-cleaning process with water circulation and icons for one-touch self-cleaning, electrolyzed water, and cold air drying.

5.2 Emptying the Dirty Water Tank

Regularly empty the dirty water tank after each cleaning session to prevent odors and maintain optimal performance. To remove, press the release button and pull the tank out. Dispose of the dirty water and rinse the tank with clean water.



Image 5.2: A user demonstrating the removal of the dirty water tank from the vacuum cleaner for emptying.

5.3 Cleaning the Roller Brush and HEPA Filters

Even with self-cleaning, periodic manual inspection and cleaning of the roller brush and HEPA filters are recommended. Use the provided cleaning tool to remove entangled hair or debris from the roller brush. Rinse HEPA filters under running water and allow them to air dry completely before reinstallation.

6. TROUBLESHOOTING

This section addresses common issues you might encounter with your Proscenic WashVac F20. For problems not listed here, please contact customer support.

Problem	Possible Cause	Solution
Device does not power on.	Battery is depleted or not properly installed.	Charge the battery fully. Ensure the battery is securely inserted.
"Fan abnormality" voice message.	Obstruction in the fan or air ducts.	Check for blockages in the air intake/exhaust. Clean the fan area if accessible. If the issue persists, contact support.
Poor suction or cleaning performance.	Dirty water tank full, clean water tank empty, clogged roller brush, or dirty HEPA filter.	Empty dirty water tank. Refill clean water tank. Clean roller brush and HEPA filters.
Roller brush not rotating or entangled.	Hair or debris wrapped around the roller brush.	Remove the roller brush and use the cleaning tool to remove any entangled material.
Device not self-cleaning effectively.	Insufficient water in clean tank or dirty water tank is full.	Ensure clean water tank is filled and dirty water tank is empty before initiating self-cleaning.

7. SPECIFICATIONS

Feature	Detail
Brand	Proscenic
Model	WashVac F20
Power	150W
Running Time	Up to 45 minutes
Charging Time	Approximately 4 hours
Battery Capacity	6*4000mAh (Lithium or Lithium-Ion)
Clean Water Tank Capacity	1 Liter
Dirty Water Tank Capacity	1 Liter
Working Modes	Smart Mode, MAX Mode

Feature	Detail
Special Features	One-touch self-cleaning, Electrolytic water sterilization, Cold air drying, App support, Double Narrow Edge Cleaning (<8mm)
Filter Type	Cartridge (HEPA)
Surface Recommendation	All hard floors (wood, tile, cement, etc.)
Item Weight	5 Kilograms
Suction Power	15K Pa
Noise Level	≤70dB
Cordless	Yes
Voltage	22 Volts

8. WARRANTY AND SUPPORT

8.1 Warranty Information

The Proscenic WashVac F20 comes with a **1 Year Local Warranty**. Please refer to your purchase documentation for specific terms and conditions. The product also carries a Safety Mark (221202-11).


8.2 Customer Support


For technical assistance, warranty claims, or any questions regarding your Proscenic WashVac F20, please contact Proscenic customer support through their official website or the contact information provided with your purchase.

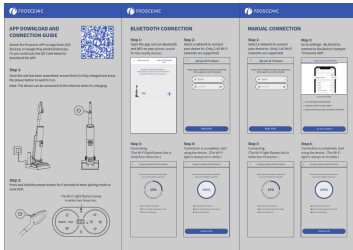


© 2023 Proscenic. All rights reserved.

Related Documents - F20

	<p>Proscenic Wash Vac F20 Cordless Wet Dry Vacuum Cleaner Owner's Manual</p> <p>This owner's manual provides instructions for the Proscenic Wash Vac F20 Cordless Wet Dry Vacuum Cleaner, covering safety precautions, product information, operation, maintenance, and troubleshooting.</p>
---	--

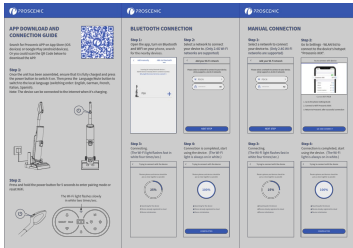
 <p>The cover of the Proscenic F20 A Cordless Wet Dry Vacuum Cleaner User Manual. It features the Proscenic logo at the top, followed by the product name and 'User Manual'. A line drawing of the vacuum cleaner is shown in the center. At the bottom, there is a small box with 'Use Sheet' and 'Use Easy' and a larger box with 'Proscenic Technology Co., Ltd.' and 'www.proscenic.com'.</p>	<p>Proscenic F20 A Cordless Wet Dry Vacuum Cleaner User Manual</p> <p>User manual for the Proscenic F20 A Cordless Wet Dry Vacuum Cleaner. Covers setup, operation, maintenance, and troubleshooting for optimal cleaning performance. Includes safety precautions and product specifications.</p>
 <p>The cover of the Proscenic Wash Vac F20 Cordless Wet Dry Vacuum Cleaner User's manual. It features the Proscenic logo at the top, followed by the product name and 'User's manual'. A line drawing of the vacuum cleaner is shown in the center. At the bottom, there is a small box with 'Use Sheet' and 'Use Easy' and a larger box with 'Proscenic Technology Co., Ltd.' and 'www.proscenic.com'.</p>	<p>Proscenic Wash Vac F20 Cordless Wet Dry Vacuum Cleaner User Manual</p> <p>User manual for the Proscenic Wash Vac F20 cordless wet and dry vacuum cleaner, detailing operation, maintenance, troubleshooting, and specifications for smart home cleaning.</p>
 <p>The cover of the Proscenic Wash Vac F20 Cordless Wet Dry Vacuum Cleaner Owner's manual. It features the Proscenic logo at the top, followed by the product name and 'Owner's manual'. A line drawing of the vacuum cleaner is shown in the center. At the bottom, there is a small box with 'Use Sheet' and 'Use Easy' and a larger box with 'Proscenic Technology Co., Ltd.' and 'www.proscenic.com'.</p>	<p>Proscenic Wash Vac F20 Cordless Wet Dry Vacuum Cleaner Owner's Manual</p> <p>This owner's manual provides comprehensive instructions for the Proscenic Wash Vac F20 Cordless Wet Dry Vacuum Cleaner, covering setup, operation, maintenance, troubleshooting, and product specifications.</p>
 <p>The cover of the Proscenic Wash Vac F20 Cordless Wet Dry Vacuum Cleaner User's manual. It features the Proscenic logo at the top, followed by the product name and 'User's manual'. A line drawing of the vacuum cleaner is shown in the center. At the bottom, there is a small box with 'Use Sheet' and 'Use Easy' and a larger box with 'Proscenic Technology Co., Ltd.' and 'www.proscenic.com'.</p>	<p>Proscenic Wash Vac F20 Cordless Wet Dry Vacuum Cleaner User Manual</p> <p>User manual for the Proscenic Wash Vac F20 Cordless Wet Dry Vacuum Cleaner, covering precautions, product features, usage, maintenance, troubleshooting, and specifications.</p>
 <p>The cover of the Proscenic F10 Pro Cordless Wet Dry Vacuum Cleaner User Manual. It features the Proscenic logo at the top, followed by the product name and 'User Manual'. A line drawing of the vacuum cleaner is shown in the center. At the bottom, there is a small box with 'Use Sheet' and 'Use Easy' and a larger box with 'Proscenic Technology Co., Ltd.' and 'www.proscenic.com'.</p>	<p>Proscenic F10 Pro Cordless Wet Dry Vacuum Cleaner User Manual</p> <p>Comprehensive user manual for the Proscenic F10 Pro Cordless Wet Dry Vacuum Cleaner. Learn about safety instructions, product usage, maintenance, troubleshooting, and specifications for efficient cleaning.</p>



[Proscenic F20 APP Connection Guide](#)

Learn how to download the Proscenic app and connect your Proscenic F20 device via Bluetooth or manual Wi-Fi setup. This guide provides step-by-step instructions for seamless device integration.

lang:en score:42 filesize: 1.52 M page_count: 2 document date: 2022-01-11

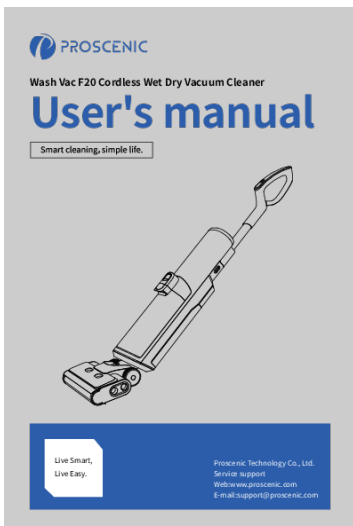


[\[pdf\] Guide](#)

U11 Pro F20 APP connection guide for EU Vision proscenic de 2022 10 |||

APP DOWNLOAD AND CONNECTION GUIDE Search for Proscenic APP on App Store IOS devices or Google Play ... ion Searching for the device Device already registered to cloud Device initialization COMPELETED **F20** APP Design Date: 2022-01-07 200*95mm / 128G 4C V1.11 ...

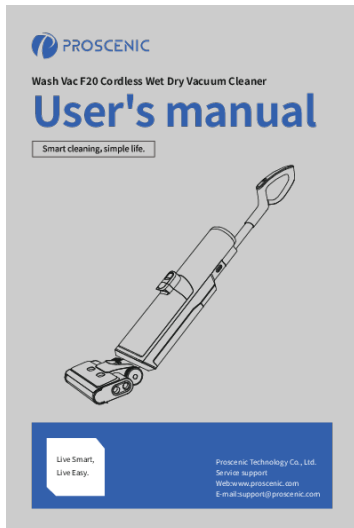
lang:en score:40 filesize: 1.54 M page_count: 2 document date: 2022-01-11



[Proscenic Wash Vac F20 Cordless Wet Dry Vacuum Cleaner User Manual](#)

User manual for the Proscenic Wash Vac F20 Cordless Wet Dry Vacuum Cleaner, covering precautions, product features, usage, maintenance, troubleshooting, and specifications.

lang:en score:37 filesize: 4.48 M page_count: 17 document date: 2022-01-11



[Proscenic Wash Vac F20 Cordless Wet Dry Vacuum Cleaner User Manual](#)

User manual for the Proscenic Wash Vac F20 cordless wet and dry vacuum cleaner, detailing operation, maintenance, troubleshooting, and specifications for smart home cleaning.

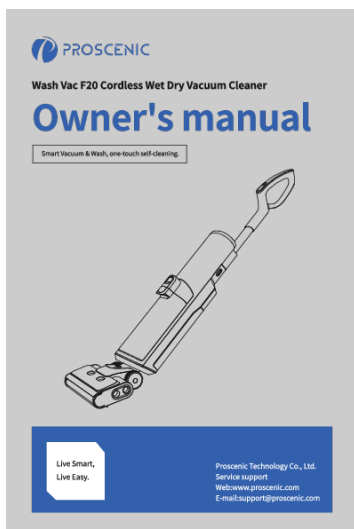
lang:en **score:29** filesize: 4.58 M page_count: 17 document date: 2022-01-11



[Proscenic F20 APP Connection and Operation Guide](#)

Learn how to connect and operate your Proscenic F20 device using the Proscenic mobile application with this comprehensive guide.

lang:en **score:24** filesize: 8.53 M page_count: 3 document date: 2022-04-11



[Proscenic Wash Vac F20 Cordless Wet Dry Vacuum Cleaner Owner's Manual](#)

This owner's manual provides comprehensive instructions for the Proscenic Wash Vac F20 Cordless Wet Dry Vacuum Cleaner, covering setup, operation, maintenance, troubleshooting, and product specifications.

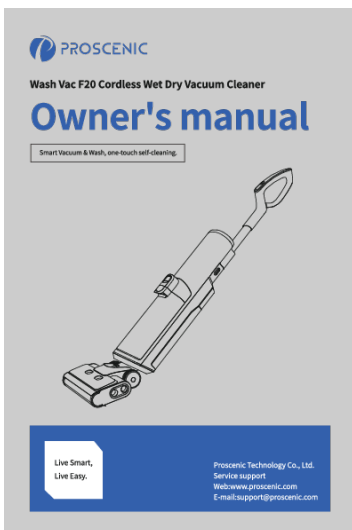
lang:es **score:23** filesize: 1.86 M page_count: 26 document date: 2022-07-16



[Proscenic F20 A Cordless Wet Dry Vacuum Cleaner User Manual](#)

User manual for the Proscenic F20 A Cordless Wet Dry Vacuum Cleaner. Covers setup, operation, maintenance, and troubleshooting for optimal cleaning performance. Includes safety precautions and product specifications.

lang:es score:22 filesize: 7.38 M page_count: 77 document date: 2025-04-30



[\[pdf\] User Manual](#)

3135303Y11 F20 Proscenic Manual de instrucciones proscenic es 2022 10 |||

Contents ES Precauciones _____ 49 Acerca de su Producto _____ 51 Uso de su Producto ----- _53 Mantenimiento de su Producto - --56 Resolucin de Problemas -----59 Especificaciones del Producto ---- 60 ...

lang:es score:21 filesize: 38.89 M page_count: 15 document date: 2022-10-19

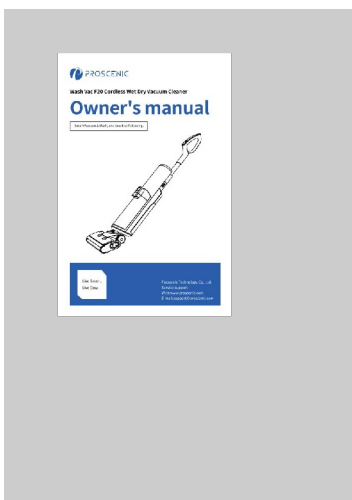


[\[pdf\] Instructions](#)

Adobe Photoshop Proscenic WashVac F20 Cordless Wet Dry Vacuum and Mop Detachable Battery Self Cleaning All Around Edge LED Display App Integration Multi Surface Grey8806350112 DI Instructions for Use IFU Grey B09XF31QJPC1nITGbdmJLm media amazon images I C1nITGbdmJL |||

...

lang:es score:19 filesize: 6.22 M page_count: 1 document date: 2022-07-20



[Proscenic Wash Vac F20 Cordless Wet Dry Vacuum Cleaner Owner's Manual](#)

This owner's manual provides instructions for the Proscenic Wash Vac F20 Cordless Wet Dry Vacuum Cleaner, covering safety precautions, product information, operation, maintenance, and troubleshooting.

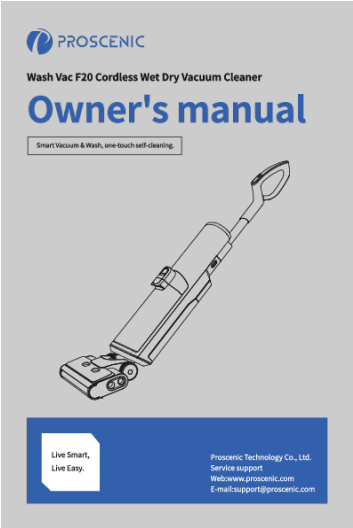
lang:es score:15 filesize: 405.62 K page_count: 12 document date: 2022-08-31

<div><div><div></div></div><div>Регистр сертификатов соответствия</div></div>	
<div>Основные сведения</div>	
Тип сертификата	Сертификат соответствия требованиям технического регламента Евразийского экономического союза (технические регламенты Таможенного союза)
Технический регламент	ТР ТС 004/2011 "Требования безопасности пылесосов и электроприборов"
Евразийский сертификат	ТР ТС 020/2011 "Требования безопасности пылесосов и электроприборов"
Тип объекта сертификации	Пылесосы (ручной и автоматический тип)
<div>Сертификат</div>	
Срок действия	Действует
Регистрационный номер сертификата	САК.011.С-01.0000.01.0000.01
Дата регистрации сертификата	02.08.2023
Дата окончания действия сертификата	02.08.2028
Номер бланка	000000
Соблюдение требований, предъявляемых к сертификации	Да
<div>Лицо, подписавшее сертификат</div>	
Имя, фамилия, наименование должности	Калинина Анастасия Михайловна
<div>Заявитель</div>	
Тип заявителя	Юридическое лицо
Вид заявителя	Производитель товаров
Информационный ресурс заявителя (URL)	770039605
Основной государственный регистрационный номер юридического лица (ОГРН)	1107000000000000000
Полное наименование	Общество с ограниченной ответственностью "АВАНС"
Организационно-правовая форма	Общество с ограниченной ответственностью
Средства массовой информации	ООО "АВАНС"
ВНД руководителя	Анатолий Терентьевич
Должность руководителя	Генеральный директор
<div>Адрес</div>	
Адрес места нахождения	115154, Россия, город Москва, район Покровское, дом 3, строение 2, этаж 4-й, 2 этаж
<div>Контактные данные</div>	
Номер телефона	+7 495 4822282
Адрес электронной почты	info@avans.ru
Выпуск от 04.05.2024. Регистрационный номер 14722051.0000-0100-0000-01000001	
Страница 1	

Реестр Сертификатов Соответствия Продукции

Официальный реестр сертификатов соответствия продукции, выданных в соответствии с техническими регламентами Евразийского экономического союза (ТР ТС 004/2011 и ТР ТС 020/2011) для пылесосов и других электроприборов.

lang:tl score:11 filesize: 172.47 K page_count: 33 document date: 2024-05-04



[pdf]

3135303Y11 F20 PROSCENIC Wash Vac Cordless Wet Dry Vacuum CleanerSmart one touch self cleaning Live Smart Easy Proscenic Technology Co Ltd Service supportB1uuSDLQbmLm media amazon images I B1uuSDLQbmL |||

...

lang:tl score:10 filesize: 2.11 M page_count: 13 document date: 2022-07-12