

Spedal 796L

Spedal Wireless Carplay & Android Auto with 2K Dash Cam Front Camera User Manual

Model: 796L | Brand: Spedal

INTRODUCTION

This manual provides detailed instructions for the installation, operation, and maintenance of your Spedal Wireless Carplay & Android Auto with 2K Dash Cam Front Camera. Please read this manual thoroughly before using the device to ensure optimal performance and safety.



Figure 1: Spedal Portable Carplay & Android Auto device with integrated front camera and various app icons.

SETUP

1. Package Contents

Before installation, ensure all components are present:

- Spedal Portable Display Unit (7-inch)
- Power Cord (USB Type-C to Car Charger)
- Bracket (Dashboard Mount)
- Dashboard Pad Mounting Disk
- 3.5mm Audio Cable (AUX)
- Camera with Cable (Rear Camera)

- USB Type-C Cable

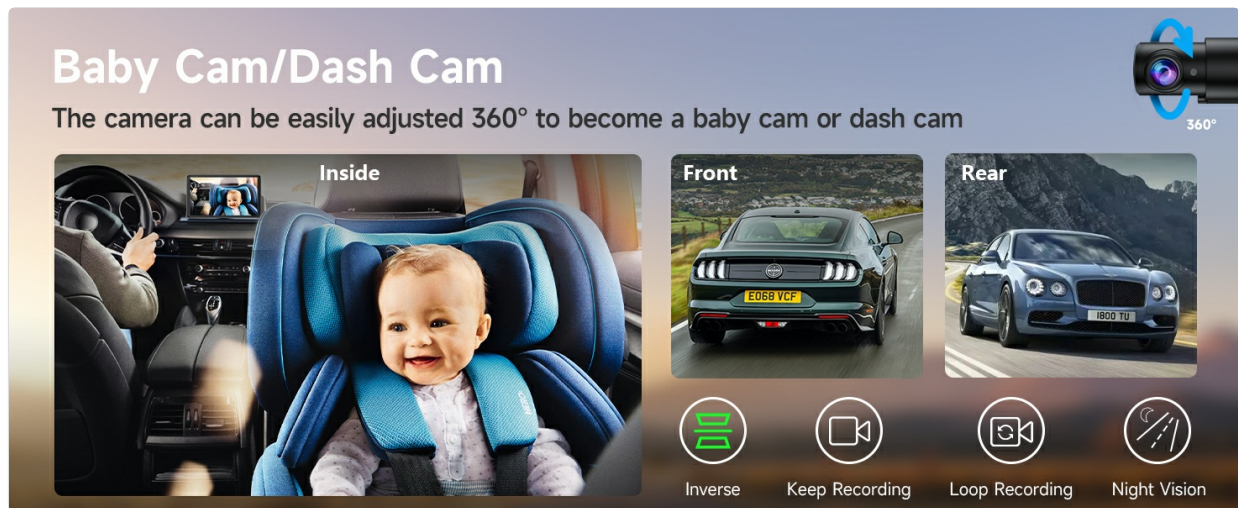


Figure 2: Overview of the 7-inch display unit and all included accessories for installation.

2. Mounting the Device

The device offers flexible mounting options for your dashboard or windshield. Choose the method that best suits your vehicle and driving preference.

- **Dashboard Mount:** Use the provided bracket and dashboard pad. Clean the dashboard surface thoroughly before attaching the pad for secure adhesion.
- **Windshield Mount:** The suction cup mount allows for secure attachment to your windshield. Ensure the windshield is clean and dry before applying the suction cup.



Figure 3: The Spedal device mounted on a car dashboard, displaying online GPS navigation with real-time traffic information.

3. Power Connection

Connect the USB Type-C end of the power cord to the device and the car charger end to your vehicle's 12V cigarette lighter socket. The device will power on automatically.



Figure 4: The universal car charger with a USB port, connecting the device to the car's power outlet.

4. Connecting CarPlay / Android Auto

The Spedal device supports both Wireless Apple CarPlay and Wireless Android Auto. Ensure your phone's Wi-Fi and Bluetooth are enabled.

Wireless Apple CarPlay (iPhone)

1. Turn on "Bluetooth" and "Wi-Fi" on your iPhone.
2. Select the Bluetooth device starting with "Spedal*****" from your iPhone's Bluetooth settings.
3. Wait for about 20-30 seconds, then select "Pair" when prompted.
4. When prompted, select "Use CarPlay".
5. Please wait for a moment, and you will enter CarPlay mode.



Figure 5: Step-by-step guide for connecting an iPhone to Wireless Apple CarPlay on the Spedal device.

Wireless Android Auto (Android)

1. Turn on "Wi-Fi" and "Bluetooth" on your Android phone.
2. Click on "Bluetooth" to enter the Bluetooth search page on the Spedal device.
3. Search for new Bluetooth devices and select the "Spedal*****" device.
4. Wait for about 15 seconds, then click "Connect" when prompted.
5. Please wait for a moment, and you will enter Android Auto mode.



Figure 6: Step-by-step guide for connecting an Android phone to Wireless Android Auto on the Spedal device.

Apple AirPlay

The device also supports Apple AirPlay for screen mirroring.

1. Go to Settings on your iPhone > Wi-Fi.
2. Select "Spedal*****" Wi-Fi and enter the password.
3. Click the "Screen Mirroring" icon on your iPhone's Control Center menu.
4. Click on NaviCam to complete Screen Mirroring.

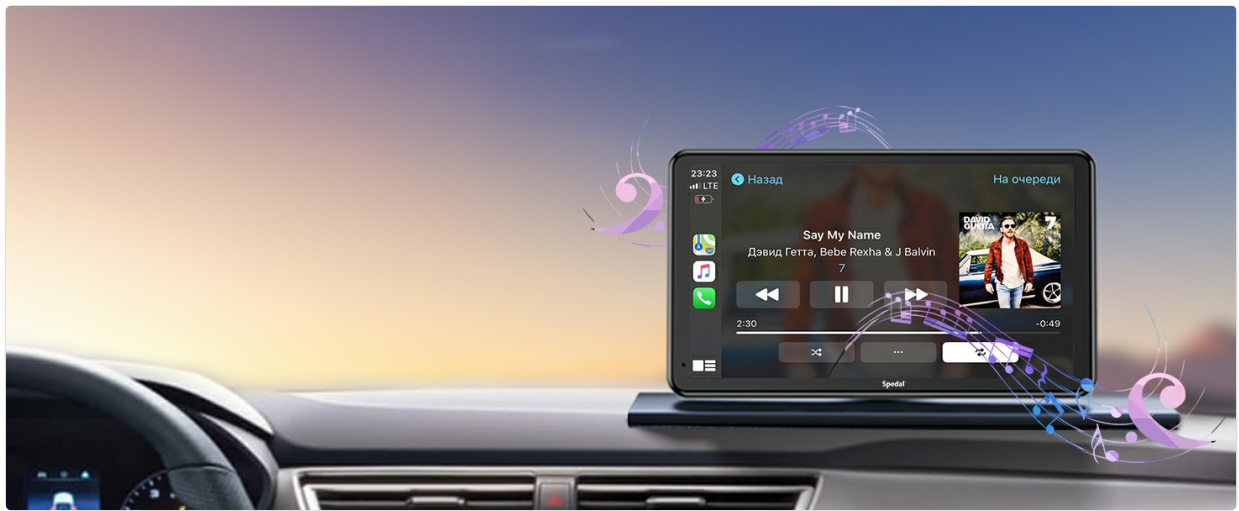


Figure 7: Steps to connect an iPhone for Apple AirPlay screen mirroring to the Spedal device.

Video: Airplay Operation

This video demonstrates the process of setting up and using AirPlay for screen mirroring on the Spedal device.

OPERATING INSTRUCTIONS

1. Main Interface

The main interface provides quick access to key functions like CarPlay, Android Auto, AirPlay, and DVR. You can navigate through different screens by swiping left or right.



Figure 8: The main interface of the Spedal Navicam CL796W, showing icons for various functions like Map Navigation, FM, AUX, CarPlay, Android Auto, AirPlay, Bluetooth, and Loop Recording.

2. Audio Output Modes

The device offers four audio output modes to integrate with your car's audio system:

- **Bluetooth:** Connects wirelessly to your car's Bluetooth for audio playback.
- **AUX Connect:** Use the provided 3.5mm audio cable to connect to your car's AUX input.
- **FM Transmission:** Transmit audio to your car's FM radio by tuning both devices to the same unused FM frequency.
- **Built-in Speaker:** The device has its own built-in speaker for audio output.

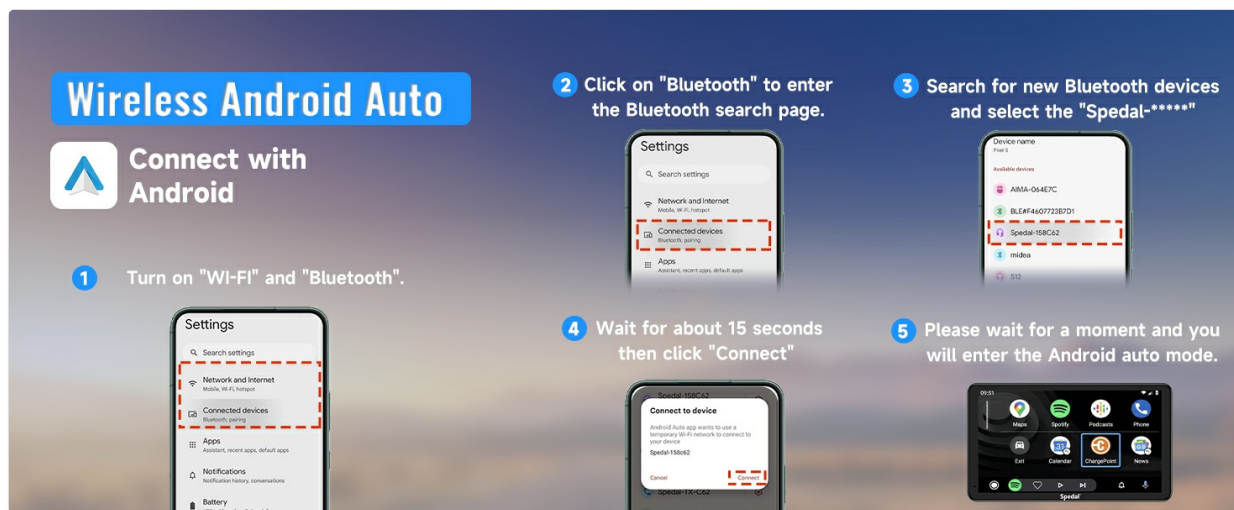


Figure 9: Visual representation of the four audio output modes: Bluetooth, AUX Connect Car, FM Transmission, and Built-in Speaker.

3. Dash Cam Features

The integrated 2K dash cam provides recording capabilities for both front and rear views (with optional rear camera). The camera can be adjusted 360 degrees.

- **Front Camera:** Records the road ahead in 2K resolution.
- **Rear Camera (Optional):** Provides a view of the rear, useful for parking and reversing.
- **Loop Recording:** Continuously records video, overwriting the oldest files when the memory card is full.
- **Night Vision:** Enhanced recording quality in low-light conditions.

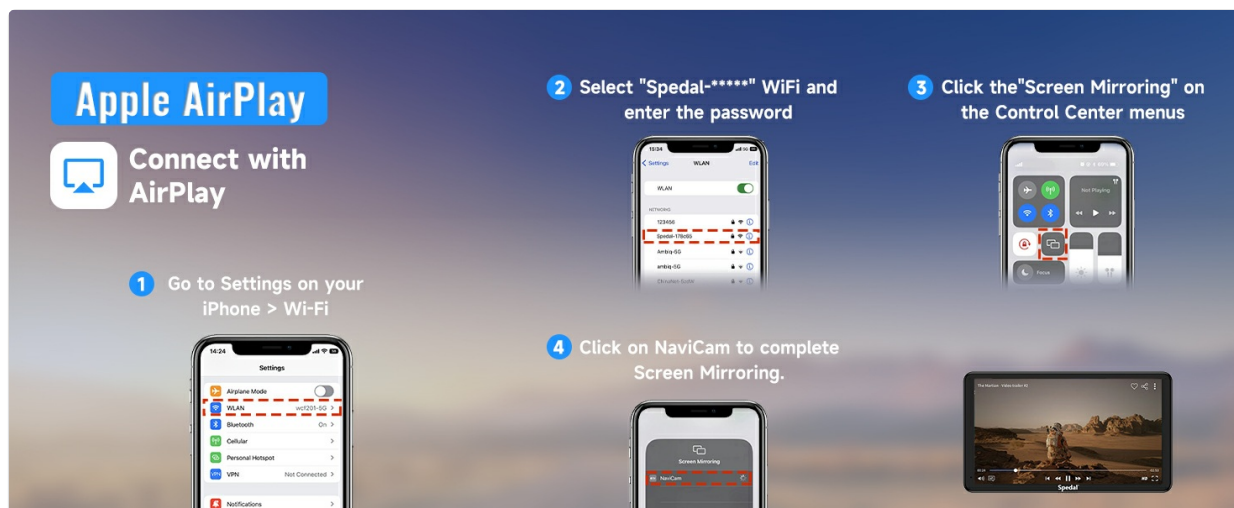


Figure 10: The dash cam can be adjusted 360 degrees and offers features like inverse view, continuous recording, loop recording, and night vision.

4. Voice Control

Utilize Siri or Google Voice Control for hands-free operation, enhancing safety while driving. This allows you to make calls, send messages, and navigate without touching the screen.



Figure 11: Demonstrates using Siri or Google Voice Control for safe, hands-free operation while driving.

Video: Spedal Navicam Wireless Carplay & Android Auto Demo

This video provides a general overview and demonstration of the Spedal Navicam's Wireless Carplay and Android Auto functionalities.

MAINTENANCE

To ensure the longevity and optimal performance of your Spedal device, follow these maintenance guidelines:

- **Cleaning:** Use a soft, dry cloth to clean the screen and device body. Avoid abrasive cleaners or solvents.
- **Software Updates:** Periodically check for firmware updates to ensure you have the latest features and bug fixes. Refer to the settings menu for update options.
- **Temperature:** Avoid exposing the device to extreme temperatures (hot or cold) for extended periods.

TROUBLESHOOTING

If you encounter issues with your Spedal device, refer to the following common solutions:

- **Device Not Powering On:** Ensure the power cord is securely connected to both the device and the car's 12V outlet. Check the car charger for any indicator lights.
- **Connectivity Issues (CarPlay/Android Auto):** Verify that your phone's Bluetooth and Wi-Fi are enabled. Try restarting both your phone and the Spedal device. Ensure no other devices are interfering with the connection.
- **Touch Screen Unresponsive:** Perform a soft reset by holding down the power button until the device restarts. If the issue persists, check for firmware updates.
- **Audio Problems:** Confirm the correct audio output mode is selected (Bluetooth, AUX, FM, or Built-in Speaker). Adjust volume levels on both the device and your car's stereo. For FM transmission, ensure both are tuned to an unused frequency.
- **Random Power Cycling:** Ensure a stable power supply from the car charger. Check the power cable for damage.

SPECIFICATIONS

Feature	Detail
Model Number	796L
Display Size	7 Inches
Resolution	1024 x 600
Connectivity Technology	Wireless (Bluetooth, Wi-Fi)
Special Features	Bluetooth, Touchscreen, 2K Dash Cam, Wireless CarPlay, Wireless Android Auto, AirPlay, FM Transmitter, AUX Output, Voice Control
Item Weight	2.02 pounds
Product Dimensions	7.4 x 1.57 x 4.25 inches
Mounting Type	Dashboard Mount

WARRANTY & SUPPORT

Spedal offers comprehensive support for your product:

- **Online Response:** 24 hours
- **Return Policy:** 30 Days
- **Product Warranty:** 12 Months

For technical support, custom logo, or software updates, please contact:

Email: support@spedaltech.com



Figure 12: Details on warranty, return policy, and customer support contact information.

