

Temtop M2000C

Temtop Air Quality Meter M2000C User Manual

Model: M2000C | Brand: Temtop

INTRODUCTION

The Temtop M2000C Air Quality Meter is designed to provide essential insights into your indoor and outdoor air quality. This device accurately detects levels of CO2, PM2.5, and PM10, and also provides temperature and humidity readings. Equipped with an audio alarm, it notifies you when air quality levels exceed safe thresholds, helping you maintain a healthier living environment. Its user-friendly design and rechargeable battery make it a convenient tool for monitoring air quality in various settings.

KEY FEATURES

- Affordable Quality Monitoring:** Delivers essential air quality data for cost-conscious homes and offices.
- Streamlined Air Quality Insights:** Features a professional-grade laser sensor for precise PM2.5 and PM10 detection and a sensitive NDIR sensor for CO2 levels.
- Intuitive Alerts and Clear Display:** Audio alarm for threshold breaches and a vibrant TFT display for real-time air quality overview.
- User-centered Design:** Ergonomic construction and rechargeable battery for simple operation and portability.
- Robust Support & Assurance:** Backed by Temtop's 12-month warranty and round-the-clock customer support.

PRODUCT OVERVIEW

Familiarize yourself with the components and interface of your Temtop M2000C Air Quality Meter.



Image: Front view of the Temtop M2000C Air Quality Meter with labels indicating its various parts, including the USB port, display, and control buttons.

Interface Components:

- USB Port:** For charging the device.
- Buzzer Status:** Indicates if the audio alarm is active.
- Measuring Status:** Shows current measurement activity.
- Display:** Vibrant TFT screen showing real-time readings and menu options.
- Menu Button:** Accesses the main menu.

- **Increase/Up Button:** Navigates up in menus or increases values.
- **Back Button:** Returns to the previous screen.
- **Power/OK Button:** Powers the device on/off or confirms selections.
- **Decrease/Down/Switch (Start/Pause) Button:** Navigates down in menus, decreases values, or starts/pauses measurements.
- **Date & Time:** Displays current date and time.
- **Power Level:** Indicates battery charge.

SETUP

1. **Unboxing:** Carefully remove the Temtop M2000C from its packaging. Ensure all components listed in the "What's in the Box" section are present.
2. **Initial Charge:** Before first use, fully charge the device using the provided USB charging cable. Connect the cable to the device's USB port and a compatible USB power adapter (not included) or computer USB port. The power level indicator on the display will show charging status.
3. **Power On:** Press and hold the Power/OK button to turn on the device.
4. **Initial Acclimation:** For optimal accuracy, allow the device to acclimate to its environment for at least 8 hours before taking critical measurements. This allows the sensors to stabilize.

OPERATING INSTRUCTIONS

The Temtop M2000C offers straightforward operation for monitoring various air quality parameters.

Navigating the Menu:

- Press the **Menu** button to access the main menu.
- Use the **Increase/Up** and **Decrease/Down** buttons to scroll through options like PM2.5, CO2, HCHO, View all info, and Set.
- Press the **Power/OK** button to select an option.
- Press the **Back** button to return to the previous screen.

Taking Measurements:

1. From the main menu, select the desired parameter (e.g., PM2.5, CO2) using the navigation buttons and press **OK**.
2. The device will immediately begin displaying real-time readings for the selected parameter.
3. The display will show the current concentration, along with a status indicator (e.g., "Good", "Moderate").
4. For PM2.5 and CO2, a bar graph feature is available to show concentration trends over time. Use the navigation buttons to switch to the graph view if available.

Audio Alarm:

- The device features an audio alarm that activates when air quality levels exceed preset thresholds.
- Refer to the "Air Quality Parameter for Reference" table in the "Understanding Readings" section to understand these thresholds.
- The buzzer status icon on the display indicates if the alarm is active.

Your browser does not support the video tag.

Video: An overview of the Temtop M2000C's functions, demonstrating how to navigate the menu, view particle counts, CO2 levels, and interpret the data using the on-screen charts and reference guide. It also highlights the device's portability and rechargeable battery.

UNDERSTANDING READINGS

The Temtop M2000C measures several key air quality parameters. Understanding these readings is crucial for assessing your environment.

PM2.5 and PM10:

PM2.5 refers to fine inhalable particles, with diameters that are generally 2.5 micrometers and smaller. PM10 refers to inhalable particles, with diameters that are generally 10 micrometers and smaller. These particles can come from various sources like combustion (vehicles, fires), industrial processes, and dust. High levels can impact respiratory and cardiovascular health.

CO2 (Carbon Dioxide):

CO2 is a gas naturally present in the atmosphere. In indoor environments, elevated CO2 levels often indicate inadequate ventilation. While not directly toxic at typical indoor concentrations, high CO2 can lead to drowsiness, headaches, and reduced cognitive function.

Air Quality Parameter for Reference:

The following table provides a general guide for interpreting the air quality readings from your device. These values are based on common air quality standards.

Air Quality Parameter Reference Table

Pollutant	Status	Good	Moderate	Unhealthy for Sensitive Groups	Unhealthy	Very Unhealthy	Hazardous
PM2.5 (µg/m³)	≤12	12.1~35.4	35.5~55.4	55.5~150.4	150.5~250.4	≥250.5	N/A
PM10 (µg/m³)	≤54	55~154	155~254	255~354	355~424	≥425	N/A
CO2 (ppm)	≤700	701~1000	1001~1500	1501~2500	2501~5000	≥5001	N/A
HCHO (mg/m³)	≤0.1	N/A	N/A	N/A	>0.1	N/A	N/A

Note: HCHO (Formaldehyde) detection is not available on the M2000C model. This table is for general reference across Temtop models. For more detailed information on air quality and health impacts, please consult official environmental health resources.

MAINTENANCE

- **Cleaning:** Use a soft, dry cloth to clean the exterior of the device. Do not use abrasive cleaners or solvents.
- **Storage:** When not in use for extended periods, store the device in a cool, dry place, away from direct sunlight and extreme temperatures.
- **Battery Care:** To prolong battery life, avoid fully discharging the battery frequently. Charge the device regularly, even if not in constant use.

- **Sensor Care:** Avoid exposing the sensor inlet to dust, water, or other contaminants. Do not attempt to clean the internal sensors.
- **Calibration:** The device features a calibration function for CO2 readings. Refer to the device's settings menu for instructions on how to perform calibration to ensure accurate measurements.

TROUBLESHOOTING

If you encounter issues with your Temtop M2000C, try the following steps:

- **Device Not Turning On:** Ensure the battery is charged. Connect the device to a power source using the USB cable and try turning it on again.
- **Inaccurate Readings:**
 - Allow the device to acclimate to the environment for at least 8 hours.
 - Perform a CO2 calibration if available in the settings menu.
 - Ensure the sensor inlet is not obstructed.
- **Audio Alarm Constantly On:** Check the current air quality readings against the reference table. If levels are high, take appropriate action (e.g., improve ventilation). You can mute the buzzer through the device settings if needed.
- **Display Issues:** If the display is frozen or unresponsive, try restarting the device by holding the power button. If the issue persists, contact customer support.

For further assistance, please refer to the Warranty and Support section.

SPECIFICATIONS

Attribute	Detail
Product Dimensions	1.4"D x 2.8"W x 8.8"H (1.4 x 2.8 x 8.8 inches)
Item Model Number	M2000C
Batteries	1 Lithium Ion batteries required (included)
Date First Available	July 2, 2020
Manufacturer	Elitech
Brand	Temtop
Style	CO2, PM2.5/10, Particle, T&H
Power Source	Battery Powered
Color	M2000C
Item Weight	14.4 ounces
Alarm	Audible
Operating Humidity	90 percent
Upper Temperature Rating	50 Degrees Celsius
Sensor Type	NDIR (for CO2)

Attribute	Detail
Country of Origin	China

WHAT'S IN THE BOX

- Temtop Air Quality Monitor (M2000C)
- USB Charging Cable
- User Manual (this document)
- Storage Box (for M2000 2nd, may vary for M2000C)



Image: The Temtop M2000C Air Quality Monitor, its USB charging cable, and the user manual, neatly packed within a protective storage box.

WARRANTY AND SUPPORT

Each Temtop M2000C purchase is backed by a **12-month warranty** from the date of purchase. This warranty covers manufacturing defects and ensures reliable operation of your device.

For any questions, technical assistance, or warranty claims, Temtop provides **round-the-clock customer support**. Please visit the official Temtop website or refer to the contact information provided in your physical user manual for support details.

You can also visit the [Temtop Store on Amazon](#) for more product information and support resources.

ADDITIONAL INFORMATION: IMPORTANT CONSIDERATIONS

To help you better understand air quality monitoring and the readings from your Temtop device, here are some important points:

What is PM2.5?

PM2.5, which are tiny particles that we can breathe in. They come from things like cars, factories, fires, homes and buildings. PM2.5 can harm our health and cause problems like heart disease, lung cancer, asthma, stroke, diabetes and COPD.

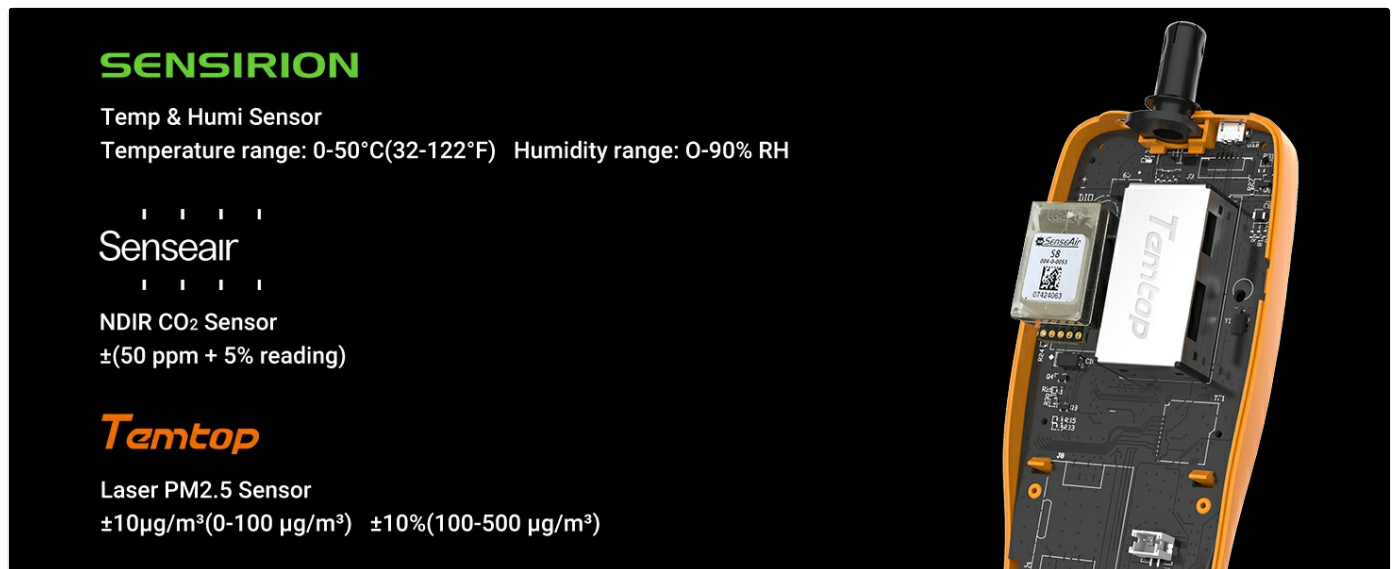


Image: An industrial scene with smoke stacks emitting plumes, illustrating common sources of PM2.5 particles in the air.

Why PM2.5 values vary in different locations of the same room?







PM2.5 in the air is not evenly distributed so the readings of PM2.5 monitors within the same room may also vary.



Image: A comfortable living room setting, demonstrating how PM2.5 levels can differ even within the same indoor space due to uneven distribution.

Why air quality monitor readings differ from official data?

Official data such as PurpleAir or Airnow reflect the average air quality of a region or city, while your air quality monitor reflects the specific air quality of your location, which may differ due to factors such as geography, weather, traffic, etc.

 <p>Adjustable Storage Interval Tailor the storage interval to specific requirements, allowing you to choose between intervals of 1, 5, 10, and 30 minutes, providing flexibility and customization for your monitoring needs.</p>	 <p>Data Export Seamlessly export your collected data to external devices or platforms for further analysis and record-keeping, empowering you to delve deeper into air quality insights.</p>	 <p>Rechargeable Battery Enjoy the convenience and eco-friendliness of a rechargeable battery, providing reliable and sustainable energy for extended monitoring sessions.</p>
 <p>High-resolution Screen Experience enhanced clarity and readability with the high-resolution screen, enabling you to effortlessly monitor and understand air quality trends.</p>	 <p>Time & Date Display Stay informed about the precise time and date of your air quality measurements, providing accurate context for data analysis and comparison.</p>	 <p>Calibration Function Maintain consistent and trustworthy CO₂ readings by regularly calibrating your device, ensuring reliable monitoring and accurate assessment of air quality.</p>

*Only M2000C 2nd and M2000 2nd have adjustable storage interval and data export function.




Image: An office environment, highlighting that personal air quality monitors provide localized readings, which can differ from broader official regional data due to various environmental factors.

How do I fix my PM2.5 problem?

To reduce the harmful effects of PM2.5, you can drive less or take public transport, use air purifiers or humidifiers at home, avoid outdoor activities or exercise when the air is polluted, wear masks or glasses to protect yourself, and eat more vitamin-rich foods to boost your immunity.

Something You Need to Know Before Using It

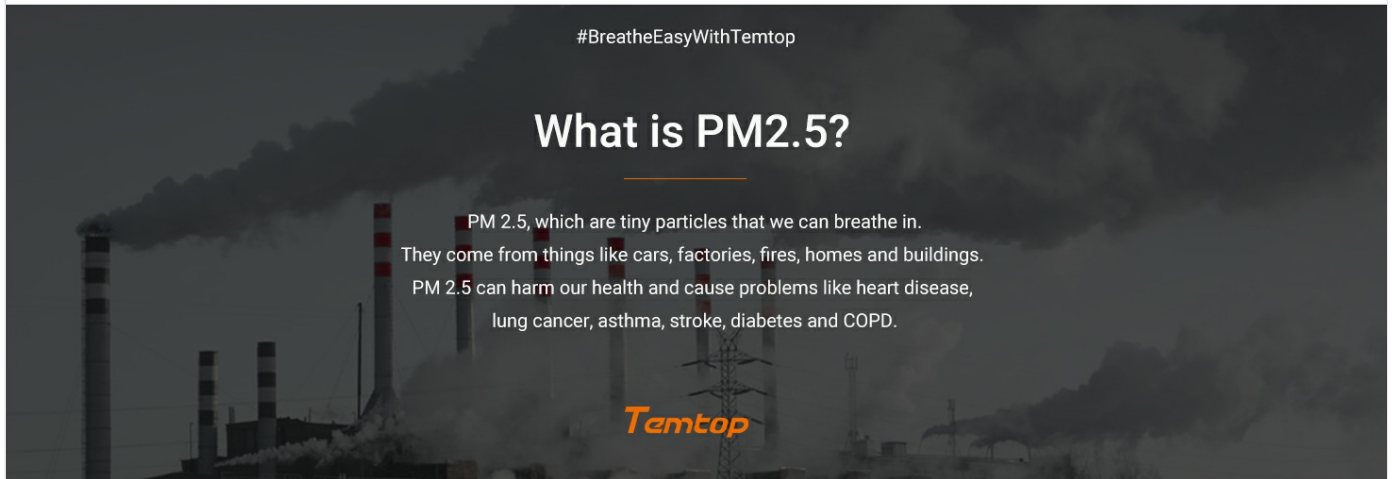


Image: A family relaxing at home, representing a healthy indoor environment and suggesting lifestyle adjustments to reduce PM2.5 exposure.

Tell me something about the history of air sensors.

In the 1900s, expensive air equipment was used in dangerous scenarios such as mining. In 2013-2016, the EPA first determined the accuracy of low-cost air sensors, and some sensors began popularizing in 2016. Now, Temtop has developed PM2.5 sensors since 2013 and is committed to providing professional-grade air testers at the best value.

Something You Need to Know Before Using It

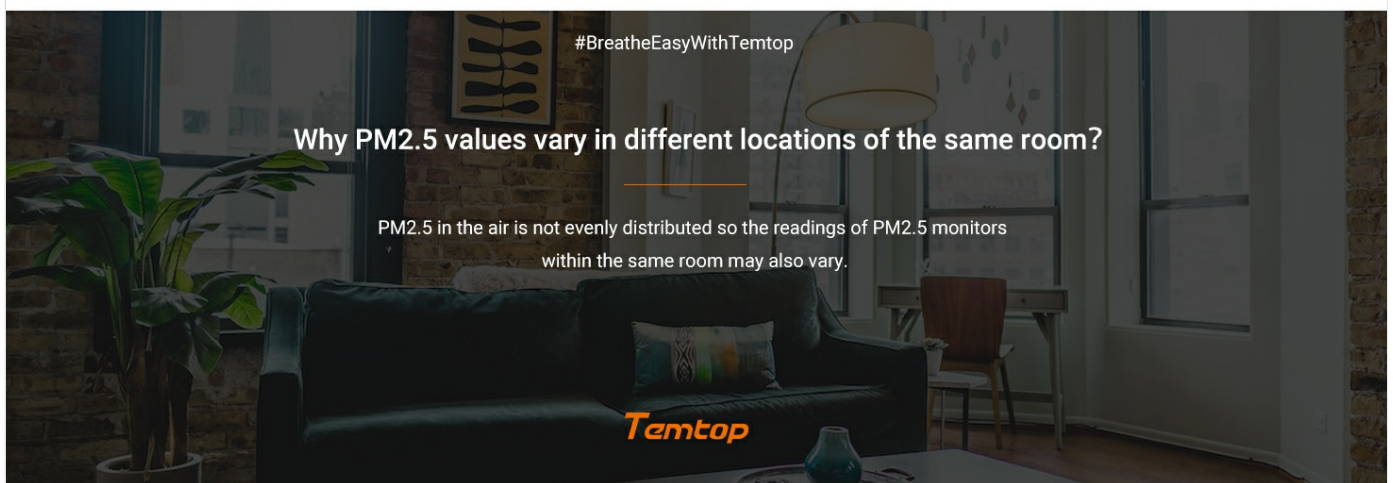


Image: A laboratory setting featuring multiple air quality monitors, illustrating the historical development and increasing accessibility of air sensing technology.

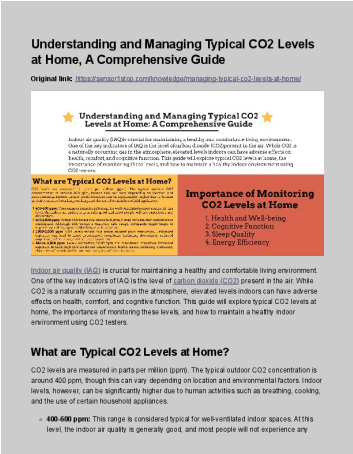
© 2024 Temtop. All rights reserved.
For more information, visit [Temtop Store](#)



[Temtop M2000 Series Air Quality Monitor User Manual](#)

User manual for the Temtop M2000 Series Air Quality Monitor, detailing its features, operation, specifications, and maintenance.

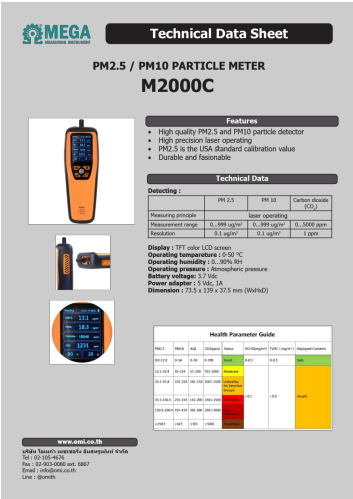
lang:en score:31 filesize: 3.78 M page_count: 16 document date: 2023-06-07



[\[pdf\] Guide](#)

Partager avec Comprendre et gérer les niveaux typiques de CO2 à la maison un guide complet Sensor One Stop Le fournisseur capteurs chaîne d approvisionnement en Chine au meilleur rapport qualité prix Understanding and Managing Typical Levels at Home A Comprehensive Guide sensor1stop 2024 08 ||| Understanding and Managing Typical CO2 Levels at Home, A Comprehensive Guide Original link: https:// ... O2 testers available, each offering unique features: CO2 Tester Aranet4 Home Awair Element Temtop **M2000C** Kaiterra Laser Egg CO2 CO2Meter RAD0301 Key Features Portable, wireless, real-time CO2 moni...

lang:en score:28 filesize: 610.3 K page_count: 9 document date: 2024-08-27



[\[pdf\] Datasheet](#)

2596513237805data TEMTOP M2000C omi co th image |||

Technical Data Sheet PM2.5 / PM10 PARTICLE METER**M2000C** Features High quality PM2.5 and PM10 particle detector High precision laser operating PM2.5 is the USA standard calibration value Durable and fasionable Detecting : Measuring principle Measurement range Resolution Technical Data PM 2.5 ...

lang:en score:26 filesize: 564.01 K page_count: 1 document date: 2021-07-21

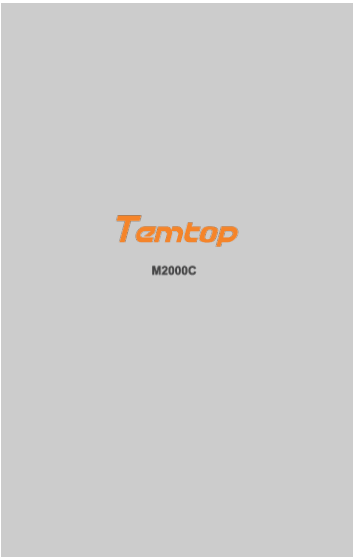


[pdf] User Manual

30610001439 M2000C 2nd 20210305 V1 1 Manuals ca temtop shop User Manual 2nd v 1616061364 cdn shopifycdn net s files 2845 1642 |||

...

lang:en score:19 filesize: 1.26 M page_count: 14 document date: 2021-03-18

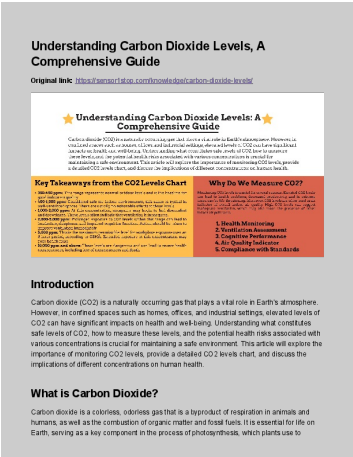


[pdf] User Manual

User Manual Temtop M2000C 2nd Generation Air Quality Monitor PM2.5 PM10 Particles CO2 Data Export Settable Audio Alarm Easy Calibration Computers A1mSQuNuVPL m media amazon images I |||

...

lang:en score:19 filesize: 1.98 M page_count: 11 document date: 2021-05-31

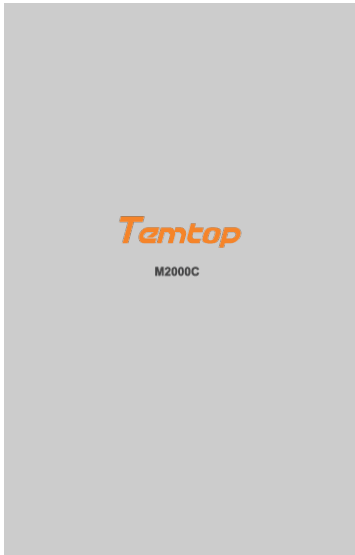


[pdf] Guide

Understanding Carbon Dioxide Levels sensor1stop 2024 08 |||

Understanding Carbon Dioxide Levels, A Comprehensive Guide Original link: https://sensor1stop.com/kn ... h design. Cons: Requires Wi-Fi for full functionality, which may limit use in some areas. 3. Temtop **M2000C** Air Quality Monitor Features: The Temtop **M2000C** is a professional-grade monitor that measur...

lang:en score:18 filesize: 664.93 K page_count: 11 document date: 2024-08-30

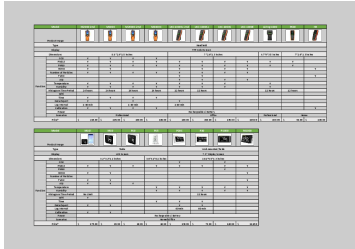


[pdf] User Manual

25050309321 M2000C TEMTOP 20210305 V1 2 Administrator Moniteur de qualité l air Temtop M2000C CO2 détecte le PM2 5 PM10 Elitech Technology Inc Air Quality Monitor User Manual drive google file d 17PWD6 VHOpdCnrMNwa2jfmRzs9kc6la2 view usp sharing u003eTélécharger u003c a u003e u003cbr n td tr u003ctr u003ctd |||

...

lang:en score:17 filesize: 2.01 M page_count: 11 document date: 2021-03-10



[pdf] Dimension Guide

Air Quality Monitor Comparison Chart xlsx cuimi cdn shopifycdn net s files 1 0015 6958 726 No information is available for this page Temtop Comparision d4c15989 0c79 476d 9e42 a82be696bf64 v 1621397050 7264 |||

Model M2000 2nd M2000 **M2000C** 2nd **M2000C** LKC-1000S 2nd LKC-1000S LKC-1000S LKC-1000E Airing-1000 P600 H3 Product Image Type Handheld Display TFT Color Screen Function Dimensions CO2 PM2.5 PM10 HCHO Number of Particles TVOC AQI Temperature Humidity Histogram Time Period WiFi Time Da...

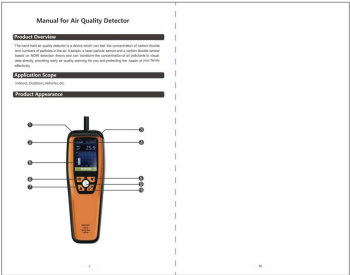
lang:en score:16 filesize: 447.87 K page_count: 1 document date: 2021-05-19



[pdf] Declaration of Conformity Label

2 Windows Download Temtop Air Quality Monitor CO2 HCHO PM2 5 PM10 Detector M2000 Elitech Technology Inc CE FCC v 1621500826 cdn shopify s files 1 2845 1642 |||

ISET S.r.l. Unipersonale Sede Legale e Uffici Via Donatori di sangue, 9 - 46024 Moglia MN Tel. e f ... e necessary to appoint a Notified Body. 5 TYPE OF PRODUCT: Air Quality Detector MODEL S : M2000, **M2000C** 6 LIST OF DIRECTIVES / REGULATIONS /STANDARDS as declared by the manufacturer itself Ele... lang:en score:15 filesize: 2.21 M page_count: 29 document date: 2021-03-20



[pdf]

DS Temtop M2000C Indoor and Outdoor Air Quality Monitor Ver1.0 Buy instrukart 2019.11 |||

...

lang:en score:15 filesize: 747.32 K page_count: 5 document date: 2019-11-20