



[Manuals.plus](#) /

› [PENDEJATO](#) /

› PENDEJATO Ultra-thin Bidet Toilet Attachment Instruction Manual, Model Bidet-0072EU-2

PENDEJATO Bidet-0072EU-2

PENDEJATO Ultra-thin Bidet Toilet Attachment

Model: Bidet-0072EU-2

INTRODUCTION

This manual provides comprehensive instructions for the installation, operation, and maintenance of your PENDEJATO Ultra-thin Bidet Toilet Attachment, Model Bidet-0072EU-2. Please read this manual thoroughly before installation and use to ensure proper function and safety. Keep this manual for future reference.

SAFETY INFORMATION

- Ensure all water connections are secure to prevent leaks.
- Do not use abrasive cleaners or harsh chemicals on the bidet surface or nozzles.
- This bidet attachment is designed for cold water connection only.
- Verify compatibility with your toilet type before installation. Refer to the "Compatibility" section.
- If you encounter any issues during installation or operation, consult a qualified plumber or contact customer support.

PACKAGE CONTENTS

Please check that all components are present before beginning installation:

- PENDEJATO Bidet Attachment (Model Bidet-0072EU-2)
- 75 CM Stainless Steel Braided Hose (3/8 inch)
- Universal EU 3/8 inch T-Adapter
- Installation Hardware (washers, nuts, etc.)
- Instruction Manual



Image: Overview of the PENDEJATO bidet attachment and its components, including the main bidet unit, a braided metal hose, and a T-adapter for water connection.

COMPATIBILITY

The PENDEJATO Bidet Attachment is designed for compatibility with most standard two-piece toilets where the toilet tank is separate from the bowl and almost vertical. It features an ultra-thin 0.5 cm design, which is 60% thinner than traditional bidet attachments, ensuring a better fit under most toilet seats.

Not Compatible With:

- Angled Toilet Seats
- Curved Wall-Mounted Toilets
- Toilets Without Screw Holes for Seat Attachment

Est-ce qu'il convient à mes toilettes ?

Toilettes en deux parties (Universel)

Toilettes en une pièce (Voir tableau d'adaptation)

	Min	Max
A. Centre de la toilette jusqu'au bord de la toilette	N/A	18.23cm
B. Distance entre 2 vis	8.89cm	20.95 cm
C. De la vis au réservoir des toilettes	2.54 cm	N/A
D. De la vis au bord de la toilette	3.17 cm	8.89 cm
E. Centre de la toilette vers le mur	29.21 cm	N/A

Image: Visual guide illustrating compatible two-piece toilets and examples of incompatible toilet types, such as those with angled seats, curved wall-mounted designs, or lacking seat screw holes.

Measurement Guide for Two-Piece Toilets:

To ensure proper fit, measure your toilet according to the following dimensions:

Bidet Compatibility Measurements

Measurement	Min	Max
A: Center of toilet to edge of toilet	N/A	18.23 cm
B: Distance between 2 screws	8.89 cm	20.95 cm
C: From screw to toilet tank	2.54 cm	N/A
D: From screw to edge of toilet	3.17 cm	8.89 cm
E: Center of toilet to wall	29.21 cm	N/A

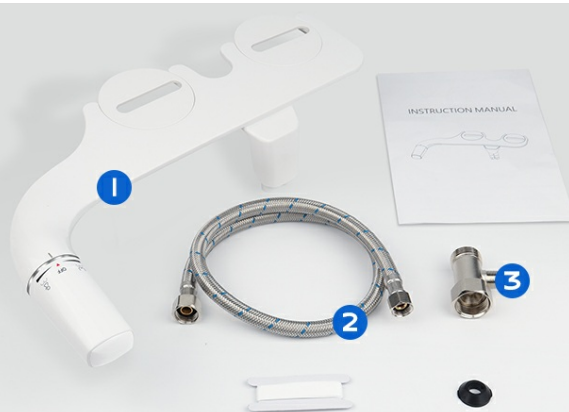
SETUP AND INSTALLATION

The PENDEJATO bidet attachment is designed for quick and easy installation on most standard two-piece toilets. No special tools are required beyond a screwdriver and wrench.

- 1. Remove the Toilet Seat:** Lift the toilet seat and lid. Unscrew the bolts holding the toilet seat to the bowl and remove the seat.
- 2. Install the Bidet Attachment:** Place the bidet attachment on the toilet bowl, aligning its mounting holes with the toilet's bolt holes. Adjust the bidet's position to ensure the nozzles are centered and the unit sits flush.
- 3. Reattach the Toilet Seat:** Place the toilet seat back over the bidet attachment and secure it with the original bolts. Ensure the bidet is firmly held in place.
- 4. Turn Off Water Supply:** Locate the water shut-off valve behind your toilet and turn it clockwise to stop the water flow. Flush the toilet to drain the tank.
- 5. Disconnect Toilet Hose:** Unscrew the existing water supply hose from the toilet tank's fill valve.
- 6. Install T-Adapter:** Connect the supplied T-adapter to the toilet tank's fill valve. Ensure the rubber washer is correctly seated to prevent leaks.
- 7. Connect Hoses:**
 - Connect the original toilet water supply hose to the bottom of the T-adapter.
 - Connect one end of the supplied stainless steel braided hose to the side of the T-adapter.
 - Connect the other end of the braided hose to the water inlet on the bidet attachment.
- 8. Check for Leaks:** Slowly turn the water supply valve counter-clockwise to restore water flow. Check all connections for any leaks. Tighten connections gently if necessary.

Toilettes DIY Installation Rapide

1. Retirer la lunette des toilettes
2. Fixer le bidet sous la lunette des toilettes
3. Raccorder l'adaptateur en T et le tuyau d'eau



- 1 PENDEJATO Toilette Bidet
- 2 Tuyau tressé en métal 80 CM (3/8 x 3/8)
- 3 Adaptateur en T en laiton (3/8 x 3/8 x 3/8)

Image: A four-step visual guide demonstrating the installation process, from removing the toilet seat to connecting the water supply and completing the setup.

OPERATING INSTRUCTIONS

The PENDEJATO bidet features a simple control knob for selecting wash modes and adjusting water pressure.



Bidet Ultra-mince



Ergonomique



Zéro
Espacement



Facile à
installer



Pression D'eau
Réglable



Non
électrique

Image: Close-up of the bidet's control knob, indicating settings for 'OFF', 'Female Mode', and 'Posterior Mode', with arrows illustrating water flow control and spray patterns.

1. Select Wash Mode:

- Rotate the control knob to the **left** for the **Female Mode**. This mode provides a softer spray for feminine hygiene.
- Rotate the control knob to the **right** for the **Posterior Mode**. This mode provides a stronger spray for general posterior cleaning.

2. **Adjust Water Pressure:** Continue rotating the knob in the selected direction (left for Female, right for Posterior) to increase the water pressure. The further you rotate, the higher the pressure. A slight rotation of 15-20 degrees initiates the spray, while a 90-degree rotation achieves maximum pressure.

3. **Turn Off:** Rotate the control knob back to the "OFF" position to stop the water flow.

The bidet features a retractable nozzle that automatically extends during use and retracts behind a protective flap when

turned off, ensuring hygiene and protection until the next use.

MAINTENANCE

Regular cleaning and maintenance will ensure the longevity and hygienic operation of your bidet attachment.

- **Nozzle Self-Cleaning:** The bidet features a self-cleaning function. To activate, briefly turn the knob to a wash mode and then back to OFF. This will rinse the nozzles.
- **External Cleaning:** Wipe the exterior of the bidet attachment with a soft, damp cloth and a mild, non-abrasive cleaner. Do not use harsh chemicals, bleach, or abrasive pads, as these can damage the finish.
- **Nozzle Cleaning (Manual):** If mineral deposits or debris accumulate on the nozzles, gently pull them out (if accessible) and clean with a soft brush and warm water. Ensure they retract properly after cleaning.
- **Winterization (if applicable):** If the bidet is installed in an unheated area subject to freezing temperatures, disconnect the water supply and drain the bidet to prevent damage from freezing water.

TROUBLESHOOTING

Common Issues and Solutions

Problem	Possible Cause	Solution
Water leaks from connections.	Loose connections, missing or improperly seated washers.	Ensure all connections are hand-tightened, then use a wrench for a quarter turn. Check that rubber washers are correctly in place. Do not overtighten.
No water spray or weak spray.	Water supply valve closed, clogged nozzles, low water pressure.	Ensure the toilet's water supply valve is fully open. Clean the nozzles (refer to Maintenance). Check household water pressure.
Nozzles do not retract.	Debris obstructing nozzle mechanism.	Gently clean around the nozzles and the protective flap to remove any obstructions.
Bidet attachment does not fit toilet.	Incompatible toilet type.	Refer to the "Compatibility" section and measurement guide to ensure your toilet meets the requirements.

SPECIFICATIONS

- **Brand:** PENDEJATO
- **Model:** Bidet-0072EU-2 (PENDEJATO-7 series)
- **Dimensions (L x W x H):** 42.4 x 18.7 x 10 cm
- **Weight:** 640 grams
- **Material:** ABS
- **Nozzle Type:** Dual retractable nozzles (Female & Posterior wash)
- **Water Temperature:** Cold water only
- **Power Source:** Non-electric
- **Hose Length:** 75 CM Stainless Steel Braided Hose

- **T-Adapter Size:** Universal EU 3/8 inch

WARRANTY AND SUPPORT

For warranty information or technical support, please refer to the contact details provided with your purchase or visit the official PENDEJATO website. Keep your purchase receipt as proof of purchase for any warranty claims.

Manufacturer: PENDEJATO

ASIN: B0BRPYV5R2