



Manuals.plus /

› WARDFYT /

› WARDFYT Pour Spout Cover Replacement for Ninja Blender Lid 72oz (Models BL660, BL740, BL770, BL771, BL772) - Instruction Manual

WARDFYT BL660, BL740, BL770, BL771, BL772

WARDFYT Pour Spout Cover Replacement for Ninja Blender Lid 72oz - Instruction Manual

For Models: BL660, BL740, BL770, BL771, BL772, BL773, BL780 Series

1. PRODUCT OVERVIEW

This WARDFYT Pour Spout Cover is a replacement component designed for specific Ninja Blender 72oz pitcher lids. It is manufactured from clear polycarbonate, offering high impact strength and heat resistance, similar to the original part. This replacement part helps restore the functionality of your blender lid's pour spout, preventing the need to purchase an entirely new lid or blender.

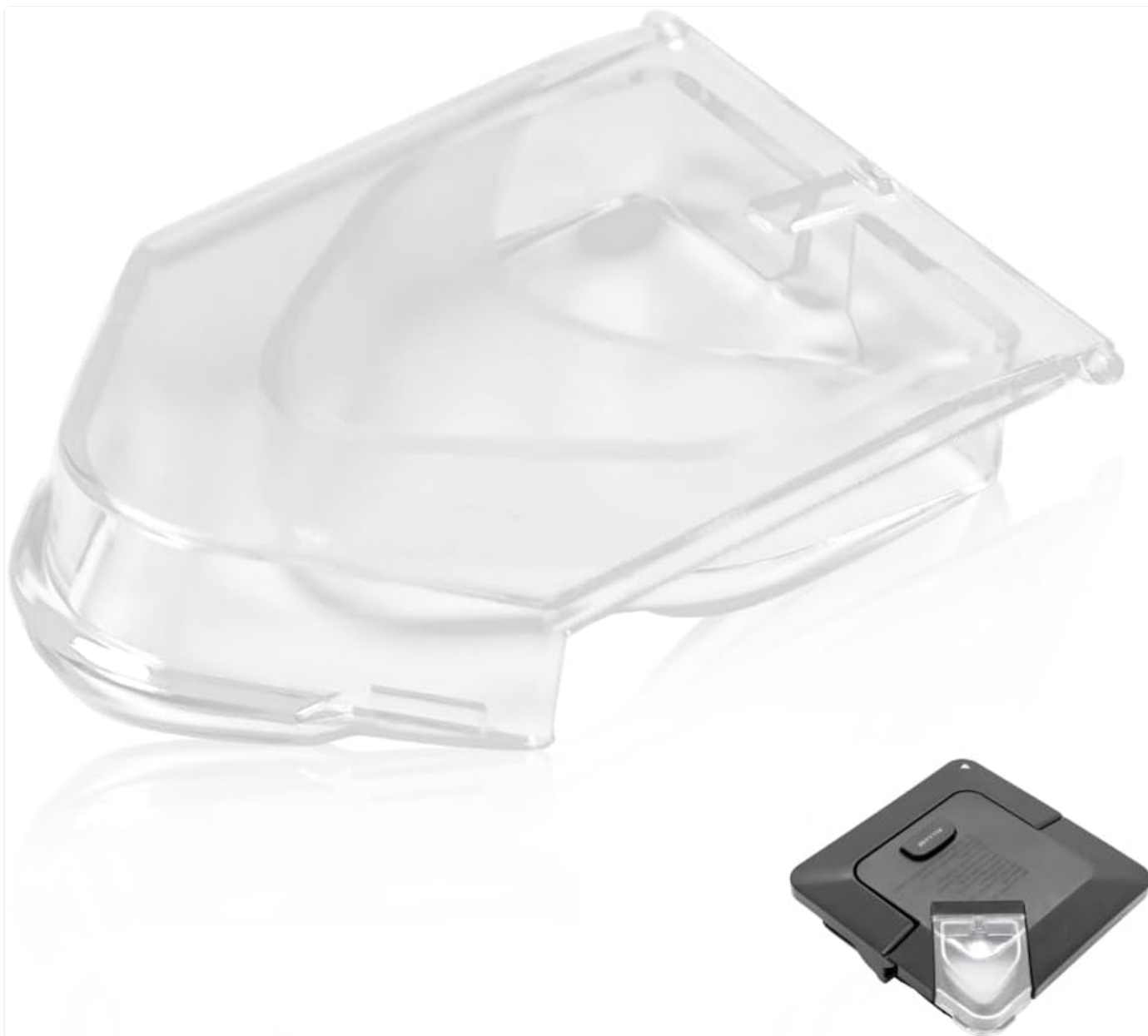


Image 1.1: The WARDFYT Pour Spout Cover Replacement.

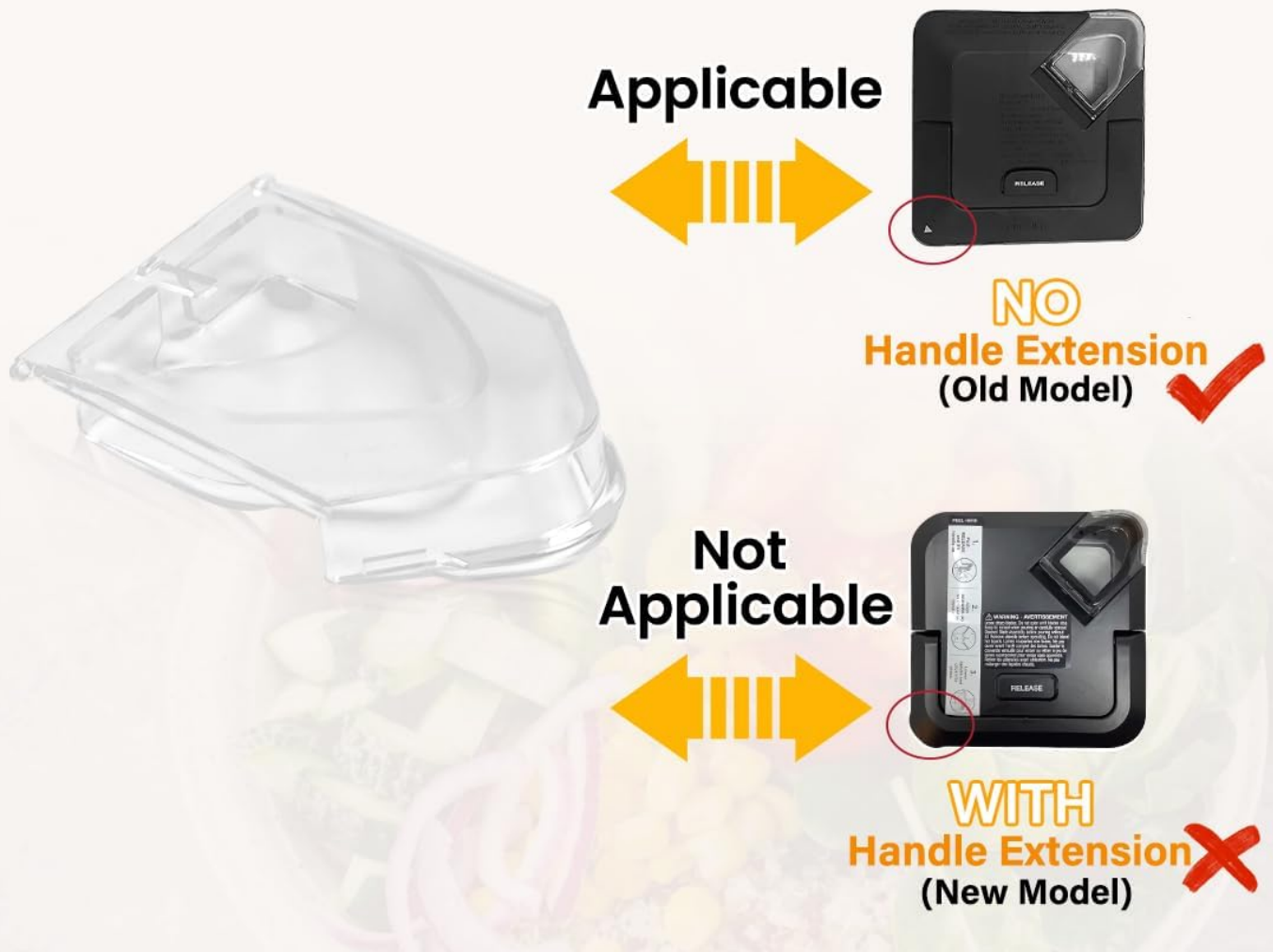
2. COMPATIBILITY

This pour spout cover replacement is specifically designed for **older square locking lids** of Ninja Blender 72oz pitchers. It is crucial to verify your blender lid model before installation to ensure proper fit and function.

2.1 Applicable Blender Lid Types

The replacement part is compatible with Ninja blender lids that **do not have a handle extension**. Lids with a handle extension are not compatible.

Applicable Locking Lid



CAUTION: The locking lid is only for reference, NOT included in the package.

Image 2.1: Visual guide for identifying applicable Ninja blender locking lids.

2.2 Compatible Blender Models

The pour spout cover is compatible with the following Ninja Blender series:

- BL660-BL665 Series
- BL740 Series
- BL770-BL773 Series
- BL780 Series
- And other similar older models.

Compatible Models

For **Old** Locking Lid of Ninja Blender 72oz

BL660–BL665 Series

BL740 Series

BL770–BL773 Series

BL780 Series

More...



✘ (The Entire locking Lid is Only for Reference, Not for Sale)

Image 2.2: List of compatible Ninja blender models.

Note: The entire blender lid is not included with this product and is shown for reference only.

3. INSTALLATION INSTRUCTIONS

Installing the WARDFYT Pour Spout Cover is a straightforward process. Follow these steps carefully to ensure a secure fit.

1. **Prepare the Lid:** Ensure your Ninja blender lid is clean and free from any debris. Remove any broken pieces of the old pour spout cover.
2. **Align the First Pin:** Take the new pour spout cover. Carefully align and insert one of the small pins on the side of the cover into its corresponding hole on the blender lid.
3. **Snap into Place:** With the first pin secured, gently apply pressure and "slide" the other side's pin into its hole. You may need to apply a slight bending motion to the cover to get the second pin to snap securely into place.
4. **Verify Security:** Once both pins are in place, gently test the pour spout cover to ensure it is firmly attached and

moves freely without detaching.



Polycarbonate Material

High impact strength and heat resistance
(same material as the original, dishwasher safe)



Clear/Transparent

Make your original ninja
blender lid like new after being installed



Smooth Pins

Requires a little effort to snap in place



✘ (The Entire locking Lid is Only for Reference, Not for Sale)

Image 3.1: Visual guide for installing the pour spout cover.

If you encounter difficulty during installation or if the flapper breaks, please refer to the "Troubleshooting" section or contact customer support.

4. OPERATING THE POUR SPOUT COVER

Once correctly installed, the WARDFYT Pour Spout Cover functions identically to the original part of your Ninja blender lid. It allows for controlled pouring of blended contents from the pitcher.

- To pour, simply lift the pour spout cover.
- After pouring, ensure the cover is closed securely to prevent spills during storage or further blending.



Image 4.1: Demonstrating the use of the pour spout cover during pouring.

5. MAINTENANCE AND CLEANING

The WARDFYT Pour Spout Cover is designed for easy maintenance and cleaning, ensuring hygiene and longevity.

- **Dishwasher Safe:** The pour spout cover is made from polycarbonate and is safe for cleaning in a dishwasher, freeing your hands from manual washing.
- **Hand Wash:** For manual cleaning, wash the cover with warm, soapy water and a soft sponge or brush. Rinse thoroughly and allow to air dry.

Easy Cleaning



Diswasher

Free your hands



Hand Wash

Easy to rinse

Image 5.1: Cleaning options for the pour spout cover.

6. TROUBLESHOOTING

Problem	Possible Cause	Solution
Pour spout cover does not fit.	Incorrect blender lid model or type.	Review Section 2: Compatibility. Ensure your blender lid is an older square locking lid without a handle extension and matches the listed compatible models.
Pour spout cover leaks.	Improper installation or damaged cover.	Ensure the cover is securely snapped into place with both pins engaged. If the cover appears damaged, contact customer support for a replacement.
Pour spout cover breaks during installation.	Excessive force or manufacturing defect.	Contact WARDFYT customer support for a free replacement.

7. SPECIFICATIONS

Feature	Detail
Material	Polycarbonate
Color	Clear
Product Dimensions	2.76"L x 2.13"W
Item Weight	0.02 Pounds (approx. 0.317 ounces)
Dishwasher Safe	Yes
Microwaveable	Yes
Number of Pieces	1

**ONLY FOR
OLDER LOCKING LID OF
NINJA BLENDER 72 OZ PITCHERS**

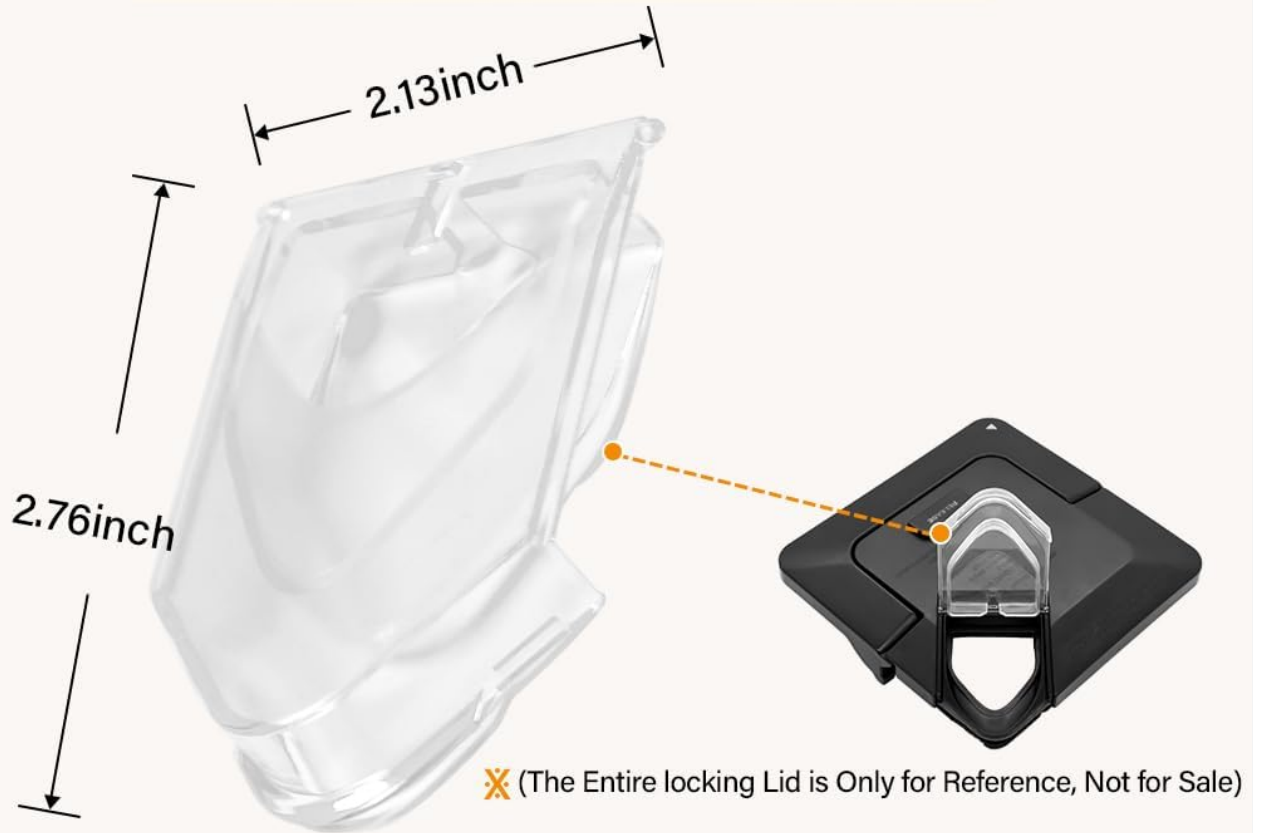


Image 7.1: Dimensions of the WARDFYT Pour Spout Cover.

8. WARRANTY AND SUPPORT

While specific warranty details are not provided, WARDFYT offers support for product issues.

- **Replacement Policy:** If the pour spout cover breaks during installation, you can contact WARDFYT for a free replacement.
- **General Inquiries:** For any other questions, concerns, or support needs, please contact the manufacturer, WARDFYT, directly through their official channels or the retailer where the product was purchased.

