

Manuals+

[Q & A](#) | [Deep Search](#) | [Upload](#)

[manuals.plus](#) /

› [PLUS PLUS](#) /

› [PLUS PLUS Leprechaun Mini Maker Tube: 70-Piece Building Block Set Instruction Manual](#)

PLUS PLUS 810265032971

PLUS PLUS Leprechaun Mini Maker Tube: 70-Piece Building Block Set Instruction Manual

Brand: PLUS PLUS | Model: 810265032971

1. INTRODUCTION

This instruction manual provides guidance for the assembly and care of your PLUS PLUS Leprechaun Mini Maker Tube building block set. This set contains 70 interlocking pieces designed to create a 3D Leprechaun figure and other imaginative constructions. PLUS PLUS pieces are a unique shape that allows for both 2D and 3D designs, fostering creativity and fine motor skills.



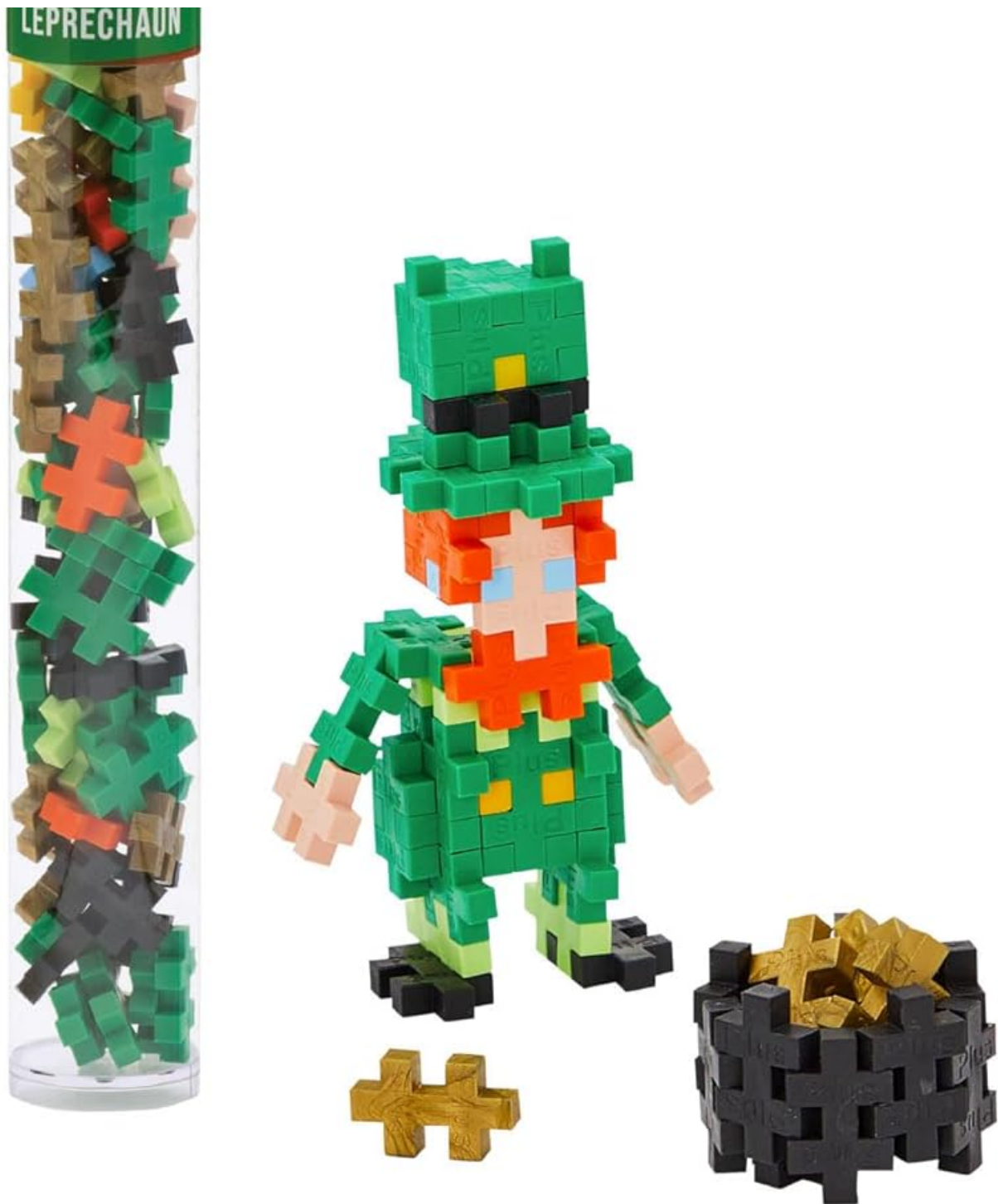


Image 1.1: The PLUS PLUS Leprechaun Mini Maker Tube with the completed Leprechaun model and a small pot of gold.

2. What's Included

Your PLUS PLUS Leprechaun Mini Maker Tube contains the following components:

- 70 PLUS PLUS interlocking pieces in various colors.
- Step-by-step instruction guide for building the Leprechaun figure.



Image 2.1: Visual representation of the contents, including the 70 Plus-Plus pieces in specific colors.

3. SETUP

To begin, carefully remove the cap from the Mini Maker Tube and pour out all the PLUS PLUS pieces. Locate the included instruction guide. Ensure you have a clean, flat surface to work on to prevent losing any small pieces.

4. OPERATING INSTRUCTIONS (BUILDING)

PLUS PLUS pieces are designed to interlock in various ways, allowing for both flat (2D) and three-dimensional (3D) constructions. Follow the included step-by-step instructions to build the Leprechaun figure. For free-form building, experiment with connecting pieces by sliding them together at their ends or sides.

4.1 Basic Connection

Each PLUS PLUS piece has two 'plus' shaped ends. To connect two pieces, align one end of a piece with an open slot on another piece and gently push them together until they fit snugly. Pieces can be connected side-by-side or end-to-end.

4.2 Following the Guide

The included instruction guide provides visual steps to construct the Leprechaun. Pay attention to the color and orientation of each piece as shown in the diagrams.



Grow fine motor and problem-solving skills, spatial reasoning, and more

Image 4.1: Children building with Plus-Plus pieces, illustrating the hands-on nature of the toy.

4.3 Creative Building

Beyond the guided model, PLUS PLUS pieces encourage open-ended play. You can create your own designs, figures, or structures. The compact size of the tube makes it suitable for building on the go.



Image 4.2: The portable nature of the Mini Maker Tube, allowing for creative play in various locations.

4.4 Instructional Video

For a visual demonstration of building with PLUS PLUS Mini Maker Tubes, refer to the video below:

Your browser does not support the video tag.

Video 4.3: A video demonstrating how to build with Plus-Plus 70 Piece Mini Maker Tubes, showcasing instructed play.

4.5 World of Color Video

Explore the diverse possibilities and vibrant colors of PLUS PLUS pieces in this video:

Your browser does not support the video tag.

Video 4.4: A video showcasing the wide array of colors and creative potential of Plus-Plus building blocks.

5. MAINTENANCE

5.1 Cleaning

To clean your PLUS PLUS pieces, wipe them with a damp cloth. Avoid using harsh chemicals or abrasive cleaners, as these may damage the plastic.

5.2 Storage

Store all pieces in the original Mini Maker Tube or a suitable container to prevent loss and keep them organized. Keep the pieces away from direct sunlight and extreme temperatures.

6. TROUBLESHOOTING

6.1 Pieces Not Connecting

Ensure pieces are aligned correctly before pushing them together. A gentle but firm pressure is usually sufficient. If pieces are difficult to connect, check for any debris in the slots.

6.2 Missing Pieces

If you believe pieces are missing from your set, carefully check your play area. For further assistance, please refer to the manufacturer's support information.

7. SPECIFICATIONS

Product Dimensions	1 x 1 x 11 inches
Item Weight	1.76 ounces
Item Model Number	810265032971
Manufacturer Recommended Age	5 years and up
Material	High quality BPA-free and phthalate-free plastic
Origin	Made in Denmark in a zero-plastic-waste factory powered by renewable energy

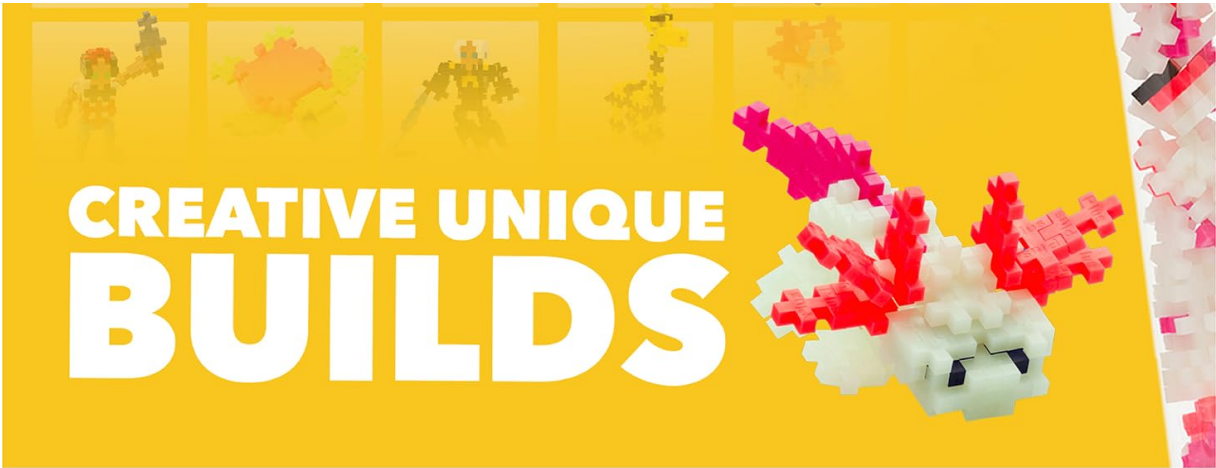


Image 7.1: Information highlighting the product's origin and sustainable manufacturing process.

8. SAFETY INFORMATION







This PLUS PLUS set is designed for children aged 5 years and up. The pieces are made from high-quality, BPA-free, and phthalate-free plastic, ensuring a safe play experience. Due to small parts, adult supervision is recommended for younger children to prevent choking hazards.

9. WARRANTY AND SUPPORT

For information regarding product warranty, returns, or customer support, please refer to the manufacturer's official website or the contact details provided on the product packaging. Specific warranty terms may vary by region and retailer.

© 2023 PLUS PLUS. All rights reserved.

Related Documents - 810265032971

	<p>Plus Plus Candy Cane Building Instructions and Activity</p> <p>Learn how to build a Plus Plus Candy Cane with this easy-to-follow guide. Includes a 'Puzzle by Number' activity and company information.</p>
	<p>Plus-Plus Christmas Tree 4337-09: Building Toy & Guide</p> <p>Build a festive Christmas Tree with Plus-Plus building toys (Model 4337-09). Includes 'Puzzle by Number' guide, safety information, and company details. 100% BPA-PVC Phthalate Free.</p>
	<p>Plus-Plus Siberian Husky Building Toy Assembly Instructions</p> <p>Step-by-step guide to building the Plus-Plus Siberian Husky toy. Learn how to assemble this creative construction toy with clear instructions and tips for builders.</p>
	<p>Plus-Plus Santa Ornament Building Guide (Model 4337-16)</p> <p>Step-by-step instructions and inspiration for building a festive Santa Claus ornament using Plus-Plus construction blocks. Includes product safety information and company details.</p>
	<p>Plus-Plus Winter Landscape Building Set Instructions</p> <p>Step-by-step guide to building a Winter Landscape with the Plus-Plus 4337-14 construction toy set. Includes safety information, company details, and building tips from Plus-Plus.</p>
	<p>Plus Plus Holiday Wreath Building Instructions</p> <p>Learn how to build a festive holiday wreath using Plus Plus building blocks. This guide provides step-by-step visual instructions and material counts for creating the seasonal decoration.</p>