

SteamOne JPFD130B

SteamOne FOLDABLE Garment Steamer JPFD130B User Manual

Model: JPFD130B | Brand: SteamOne

1. INTRODUCTION

The SteamOne FOLDABLE Garment Steamer JPFD130B is a high-performance, portable handheld steamer designed for efficient wrinkle removal and fabric care. This device combines powerful steam output with a compact, foldable design, making it suitable for both home use and travel. It features a rapid heat-up time, dual-size water tanks, and a ceramic steam plate for gentle treatment of various fabrics.

This manual provides essential information on the safe and effective use of your SteamOne FOLDABLE Garment Steamer. Please read it thoroughly before first use and keep it for future reference.



The SteamOne FOLDABLE Garment Steamer is versatile for various garments.

2. SAFETY INFORMATION

- Always ensure the power cord is securely connected and free from damage.
- Do not use the steamer on leather or synthetic leather products. Always follow the care instructions on your garment labels.
- The device is equipped with an automatic safety shut-off function. It will stop operating when the water tank is empty (approximately 15 seconds after sensing no water) or if left inactive for approximately 11 minutes.
- If water leakage occurs from the power cord connection area, immediately unplug the device and discontinue use. Contact customer support for assistance.
- Keep the steamer out of reach of children and pets.
- Use only distilled or demineralized water to prevent mineral buildup and ensure optimal performance.

3. PRODUCT OVERVIEW

The SteamOne FOLDABLE Garment Steamer JFPD130B is designed for convenience and efficiency. Its key features include:

- **Foldable Design:** Compact and easy to store or carry, ideal for travel.
- **Powerful Steam Output:** Delivers approximately 24g/min of continuous steam for effective wrinkle removal.
- **Rapid Heat-up:** Ready to use in approximately 15 seconds.
- **Dual Water Tanks:** Includes two dedicated tanks (80ml and 150ml) for varying steaming needs.
- **Ceramic Steam Plate:** Ensures smooth gliding over fabrics and gentle care for delicate materials.
- **Two Steam Modes:** Switch between Normal and Eco modes with a double-push button.
- **Safety Auto-Shutoff:** Automatically turns off when water is low or after prolonged inactivity.

Included Accessories:

- Heat-resistant mat
- Dedicated water tanks (80ml and 150ml)
- Suction cup hanger hook
- Dedicated pouch
- Dedicated power cord

SteamOne

L'AUTRE FAÇON DE REPASSER



吸盤
ハンガーフック



耐熱マット



専用タンク 150/80ml



専用電源コード



専用ポーチ

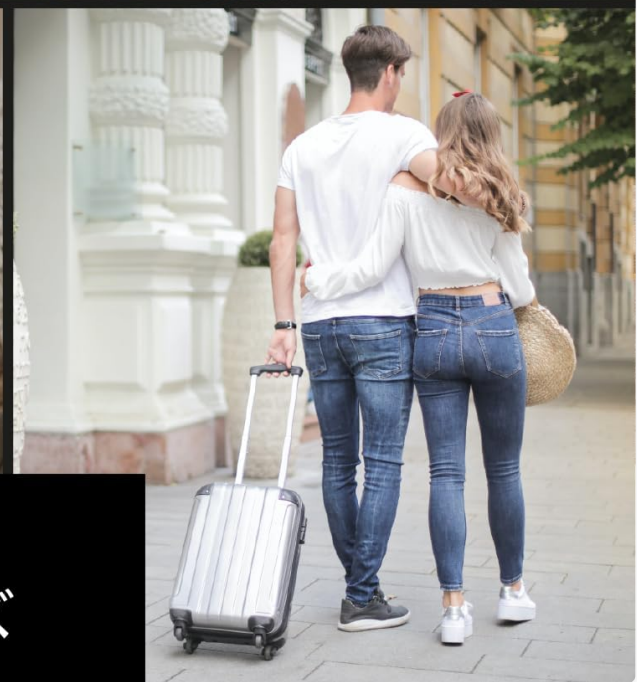
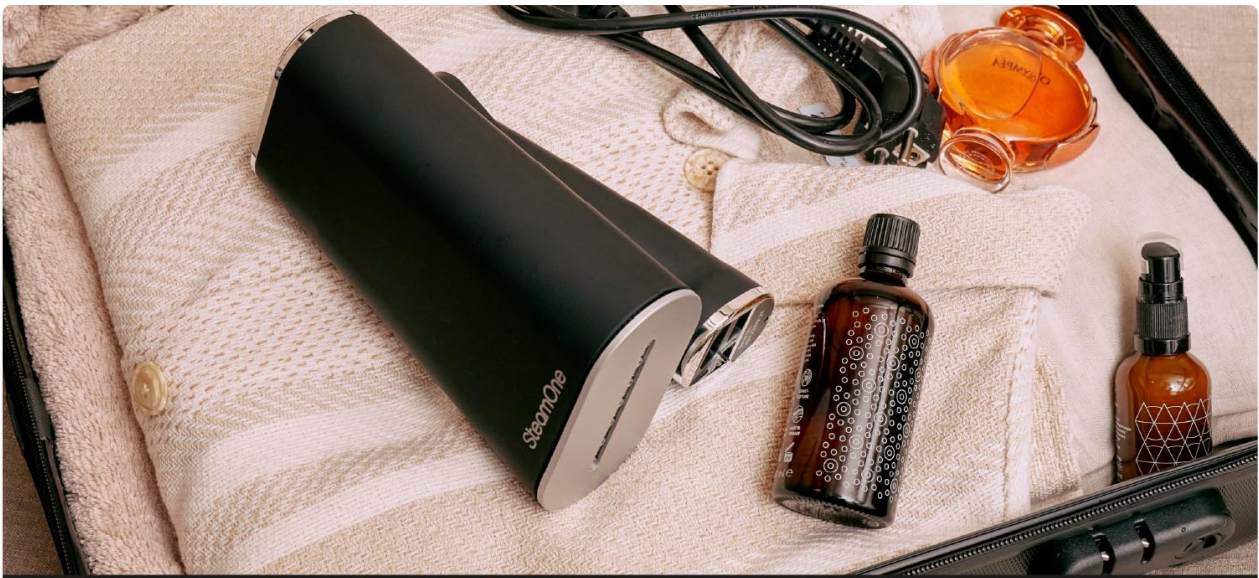
【付属品変更のお知らせ】「取り外し可能ブラシ」は、2024年2月以降の生産分より同梱を中止いたしました。予めご了承くださいませよう、お願い申し上げます。

All accessories included with the JPF130B steamer.



99%以上の除菌効果*2
クッションなどのファブリックも手軽に除菌

The internal mechanism of the steamer for powerful steam output.



**折りたたみ可能
持ち運びに最適なサイズ**

The foldable design makes it highly portable and easy to store.



The ceramic steam plate ensures smooth and safe steaming.

4. SETUP

1. **Attach the Power Cord:** Insert the dedicated power cord firmly into the port at the base of the steamer. Ensure it clicks into place.

2. **Fill the Water Tank:** Choose either the 80ml or 150ml dedicated water tank. Open the tank cap and fill it with distilled or demineralized water. Do not overfill.
3. **Attach the Water Tank:** Securely attach the filled water tank to the steamer by pushing it into the designated slot until it locks.
4. **Unfold the Steamer (if folded):** Gently unfold the steamer head until it locks into the operating position.
5. **Position the Steamer:** Place the steamer on the heat-resistant mat provided, or hang your garment using the suction cup hanger hook on a suitable surface.



Ensure the power cord is securely attached.



Attach the water tank by pushing it into place.



スタイリッシュ インテリアに馴染むデザイン

Folding and unfolding the steamer for use or storage.

5. OPERATING INSTRUCTIONS

1. **Power On:** Plug the steamer into a 100V, 50/60Hz power outlet. The indicator light will illuminate.
2. **Heat-up:** Wait approximately 15 seconds for the steamer to heat up. The indicator light will change or stop blinking when ready.
3. **Steam Emission:** Press and hold the steam button to release steam. The steamer is designed for continuous steam output with a single press.
4. **Switch Steam Modes:** Double-press the steam button to toggle between Normal and Eco steam modes, depending on your fabric and desired steam intensity.
5. **Steaming Garments:** Hold the steamer head close to the fabric, moving it up and down to remove wrinkles. For best results, gently pull the fabric taut with your free hand.
6. **Fabric Compatibility:** The ceramic plate is safe for most fabrics, including cotton, linen, wool, silk, rayon, polyester, and denim. Avoid using on delicate materials like leather or synthetic leather. Always check garment care labels.
7. **Using the Hanger Hook:** Attach the suction cup hanger hook to a smooth, clean surface to hang garments for steaming.

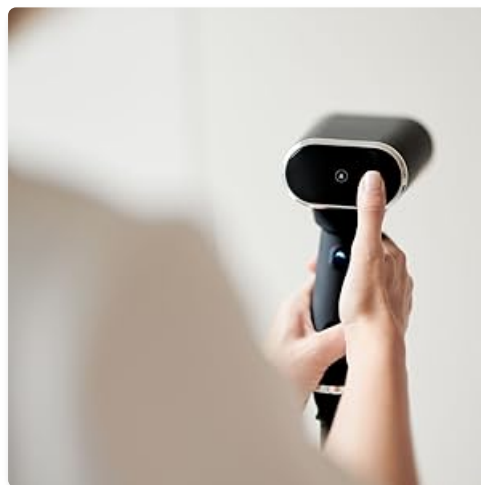
8. **Power Off:** Unplug the steamer from the power outlet after use.



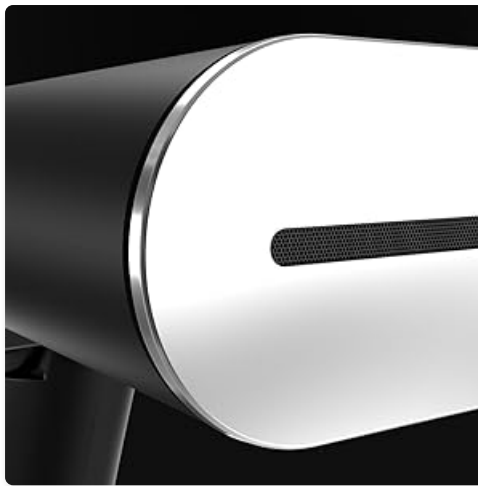
Effectively remove wrinkles from shirts.



Suitable for a wide range of fabrics, including delicate ones.



Easy one-push operation for continuous steam.



Ergonomic design for comfortable handling.

Official product video demonstrating the SteamOne FOLDABLE Garment Steamer's features and use.

6. MAINTENANCE

- **Empty Water Tank:** After each use, always empty any remaining water from the tank to prevent mineral buildup and bacterial growth.
- **Cleaning:** Wipe the exterior of the steamer with a soft, damp cloth. Do not use abrasive cleaners or solvents.
- **Descaling:** If you notice reduced steam output or white residue, descaling may be necessary. Consult the full instruction manual for detailed descaling procedures.
- **Storage:** Ensure the steamer is completely cool and dry before folding and storing it in its dedicated pouch. Store in a cool, dry place.

7. TROUBLESHOOTING

- **No Steam:**
 - Check if the steamer is properly plugged into a working power outlet.
 - Ensure the water tank is filled and correctly attached.
 - Allow sufficient time (approx. 15 seconds) for the steamer to heat up.
- **Water Leakage:**
 - Verify that the water tank is securely attached and its cap is tightly closed.
 - If leakage occurs from the power cord connection, immediately unplug the device and contact customer support. Do not attempt to repair it yourself.
- **Automatic Shut-off:**
 - This is a safety feature. It activates when the water tank is empty or after approximately 11 minutes of inactivity. Refill the tank or restart the device if needed.
- **Reduced Steam Output:**
 - Mineral buildup may be affecting performance. Consider descaling the unit as per the detailed instructions in the full manual.

For issues not covered here, please refer to the comprehensive troubleshooting section in the complete

product manual or contact SteamOne customer support.

8. SPECIFICATIONS

Feature	Specification
Brand	SteamOne
Model Number	JPFD130B
Steam Output	Approx. 24g/min
Heat-up Time	Approx. 15 seconds
Product Weight	Approx. 970g (with empty 80ml tank)
Product Size (in use)	Approx. W110 x H185 x D205 mm
Product Size (folded)	Approx. W110 x H183 x D115 mm
Water Tank Capacity	Approx. 80ml / Approx. 150ml
Steam Head Material	Ceramic Plate
Power Consumption	1400W
Voltage	100V, 50/60Hz
Power Cord Length	Approx. 2m
Country of Origin	China

9. WARRANTY AND SUPPORT

Your SteamOne FOLDABLE Garment Steamer JPFD130B comes with a **1-year warranty** from the date of purchase. A valid receipt or proof of purchase is required for warranty claims. The warranty is applicable for use within Japan only.

For any product inquiries, technical support, or warranty claims, please refer to the contact information provided in the original packaging or the full instruction manual that came with your product. The Japanese domestic sales agent handles support inquiries.