



[Manuals.plus](#) /

> [Vanity Art](#) /

> Vanity Art 59" X 30" Non-Slip Acrylic Freestanding Bathtub Instruction Manual

## Vanity Art VA6815-NSW-BN

# Vanity Art Freestanding Bathtub Instruction Manual

Model: VA6815-NSW-BN

Brand: Vanity Art

## IMPORTANT SAFETY INFORMATION

---

Please read all instructions carefully before installation and use. Failure to follow these instructions could result in injury or property damage.

- Ensure the installation area is structurally sound and can support the weight of the bathtub when filled with water and occupied.
- Always use appropriate personal protective equipment (PPE) during installation, such as gloves and safety glasses.
- Verify all plumbing connections are secure and leak-free before filling the tub.
- Do not use abrasive cleaners or harsh chemicals on the bathtub surface, as this may damage the finish.
- Keep children and pets away from the installation area during setup.
- Avoid dropping heavy or sharp objects into the tub, which could cause chips or cracks.

## PRODUCT OVERVIEW

---

The Vanity Art 59" x 30" Non-Slip Acrylic Freestanding Bathtub (Model VA6815-NSW-BN) offers a contemporary design for a luxurious bathing experience. Constructed from high-quality acrylic and reinforced fiberglass, this tub is designed for durability and comfort.



Image: The Vanity Art 59-inch freestanding bathtub in a modern bathroom setting, showcasing its sleek design.

### Key Features:

- **Premium Quality:** Made from high-quality acrylic materials for durability and strength.
- **Inspirational Design:** Luxurious and comfortable styling with gentle sloping lines that follow the natural curves of the body.
- **Easy Cleaning:** Equipped with stain and scratch-resistant properties for long-lasting use and easy maintenance.
- **Easy Placement:** Freestanding design allows for versatile placement options in the bathroom. MA (Massachusetts) approved.
- **Easy Installation:** Includes all necessary mounting hardware and a user manual for straightforward assembly and floor mounting.

# ELEGANT DESIGN



**DURABLE  
MATERIAL**



**RELAXING &  
COMFORTABLE**



**STAIN  
RESISTANT**



Image: Visual representation highlighting the durable material, relaxing and comfortable design, and stain-resistant properties of the bathtub.

# COMPLETE YOUR BATHROOM RENOVATION WITH THIS BATHTUB



NON-SLIP



ACRYLIC CONSTRUCTION



EASY TO CLEAN



Image: Features of the bathtub including non-slip surface, acrylic construction, and ease of cleaning, set against a modern bathroom backdrop.

## WHAT'S INCLUDED

---

Your Vanity Art Freestanding Bathtub package includes the following components:

- Freestanding Bathtub (Model VA6815-NSW-BN)
- Pop-up Drain Assembly (Brushed Nickel finish for this model)
- Overflow Assembly
- Mounting Hardware
- User Manual (this document)

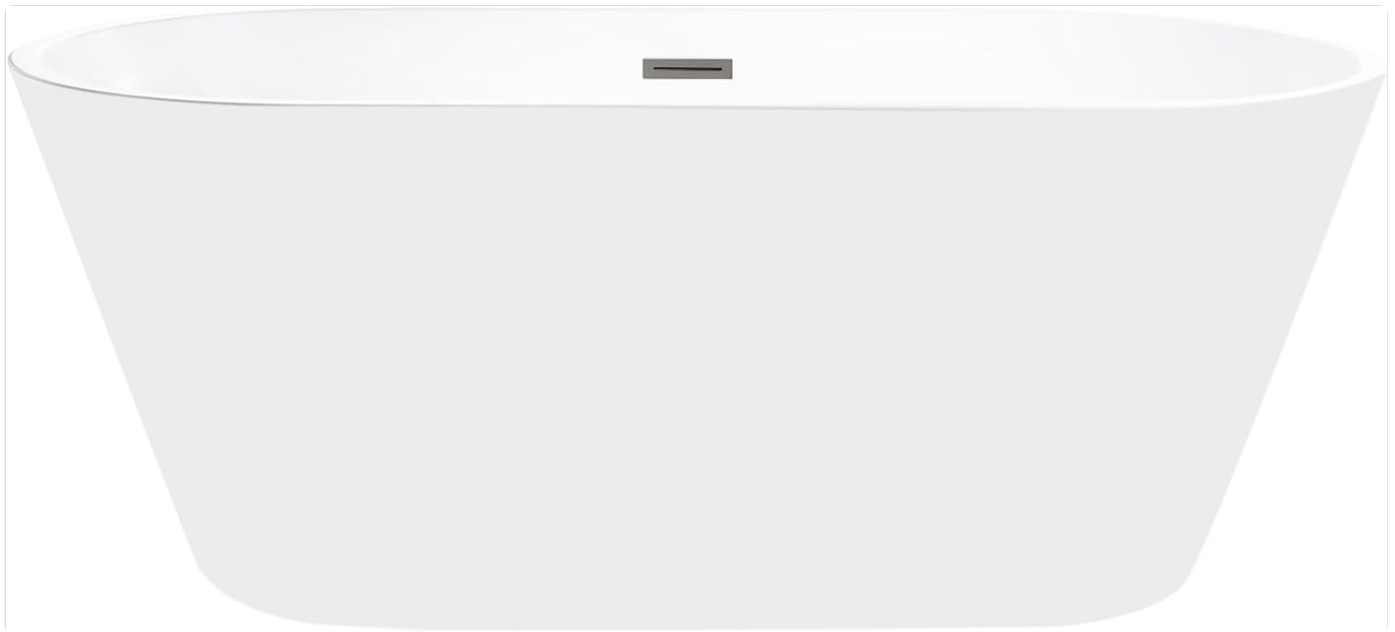


Image: Various drain and overflow finish options available for Vanity Art bathtubs. This model includes Brushed Nickel.

## SETUP

---

Follow these steps for proper installation of your freestanding bathtub. It is recommended to have professional assistance for plumbing connections.

### 1. Unboxing and Inspection

1. Carefully open the packaging using a utility knife, ensuring not to scratch the bathtub surface.
2. Remove the bathtub from the box. It is recommended to have at least two people for this step due to the size and weight.
3. Inspect the bathtub and all included components for any signs of damage or missing parts. Report any issues immediately to customer support.

Your browser does not support the video tag.

Video: Official Vanity Art Bathtub Installation Video. This video demonstrates the unboxing, component identification, and installation process for the bathtub.

### 2. Drain Assembly

1. Locate the pop-up drain and overflow components.
2. Apply a bead of silicone sealant around the top flange of the drain assembly.
3. Insert the drain assembly into the drain hole from the inside of the tub.
4. From underneath the tub, attach the rubber gasket and brass nut to secure the drain. Tighten with a wrench, ensuring a watertight seal.
5. Connect the flexible drain hose to the drain assembly.

### 3. Bathtub Placement and Leveling

1. Carefully position the bathtub in its desired location, ensuring it aligns with the floor drain.
2. Use a spirit level to check if the tub is perfectly level.
3. Adjust the leveling feet located on the bottom of the tub as needed until the tub is stable and level on all sides.



58.6" length X 29.5" width X 22.8" height

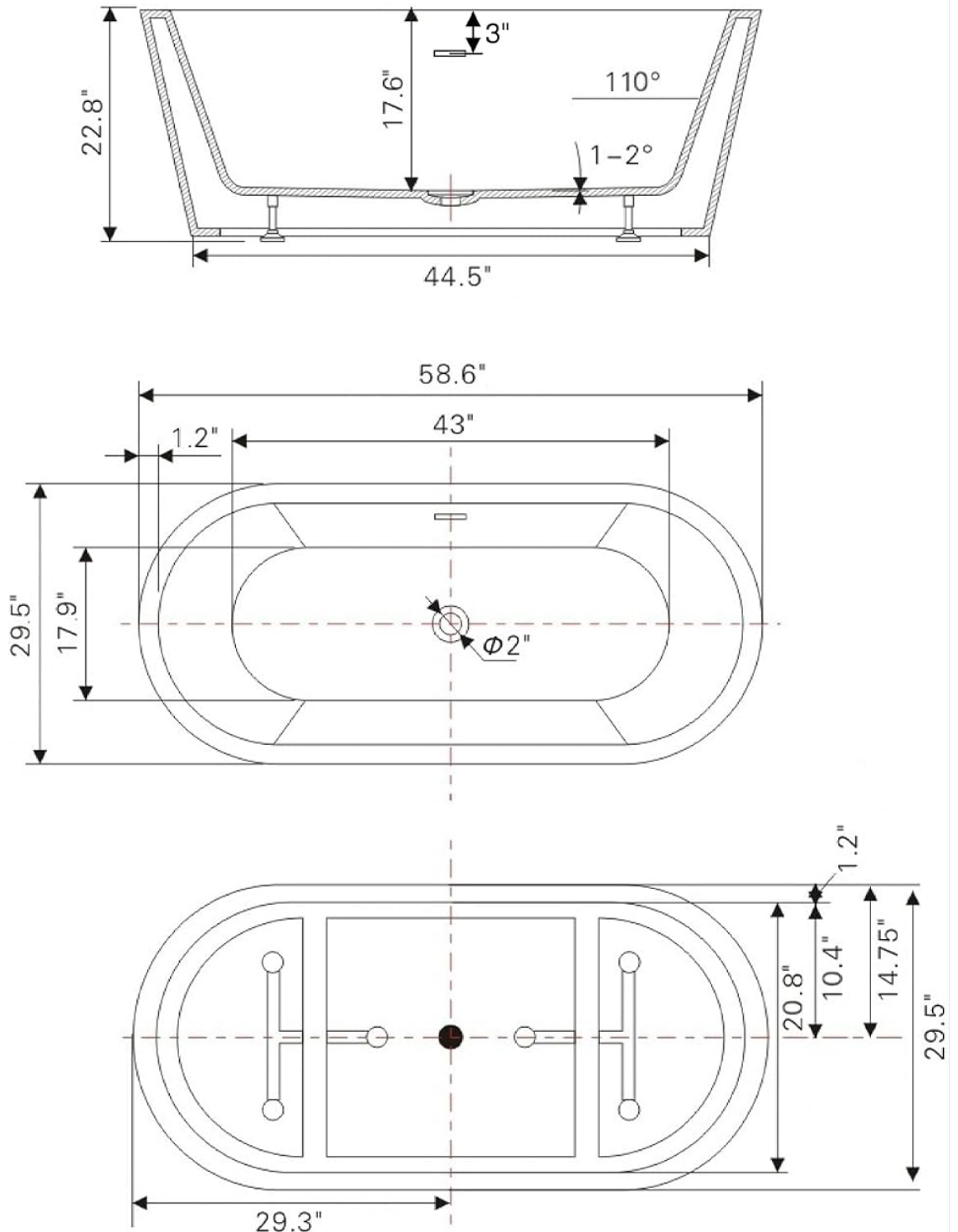


Image: Detailed diagram showing the dimensions of the Vanity Art 59-inch freestanding bathtub, including length, width, and height, which is useful for planning placement.

#### 4. Sealing the Base

1. Once the tub is leveled and in its final position, apply a continuous bead of silicone sealant around the entire base of the tub where it meets the floor.
2. Smooth the sealant for a clean finish and allow it to cure completely according to the sealant manufacturer's

instructions before using the tub.

## OPERATING INSTRUCTIONS

---

Using your Vanity Art freestanding bathtub is straightforward:

- Ensure the pop-up drain is closed before filling the tub.
- Fill the tub with water to your desired level and temperature. Always test the water temperature before entering to prevent scalding.
- After use, open the pop-up drain to empty the tub.
- For optimal drainage, ensure the flexible drain hose is not kinked or obstructed.

## MAINTENANCE

---

Regular cleaning and proper care will ensure the longevity and beauty of your bathtub:

- **Daily Cleaning:** After each use, rinse the tub thoroughly with warm water to remove soap residue and prevent buildup. Wipe down with a soft cloth or sponge.
- **Weekly Cleaning:** For a deeper clean, use a non-abrasive, mild liquid cleaner specifically designed for acrylic surfaces. Apply with a soft cloth or sponge, then rinse thoroughly and dry.
- **Avoid Harsh Cleaners:** Do not use abrasive powders, scouring pads, steel wool, or cleaners containing ammonia, acetone, or harsh acids, as these can damage the acrylic finish.
- **Stain Removal:** For stubborn stains, a paste of baking soda and water can be gently applied and rinsed. Always test in an inconspicuous area first.
- **Prevent Scratches:** Avoid placing sharp or heavy objects directly on the tub surface.

## TROUBLESHOOTING

---

Here are some common issues and their potential solutions:

Problem	Possible Cause	Solution
Slow Drainage	Hair or debris in drain; kinked flexible hose.	Remove and clean the pop-up drain. Check the flexible hose for obstructions or kinks.
Water Leakage at Drain	Improperly sealed or tightened drain assembly.	Ensure the drain assembly is properly seated with gaskets and tightened securely. Reapply silicone sealant if necessary.
Tub is Not Level	Uneven floor or leveling feet not adjusted correctly.	Adjust the leveling feet on the bottom of the tub until it is stable and level.

## SPECIFICATIONS

---

Attribute	Detail
Model Number	VA6815-NSW-BN
Color	White/Brushed Nickel

Attribute	Detail
Material	Acrylic
Product Dimensions (L x W x H)	58.6"L x 29.5"W x 22.8"H
Item Weight	84 Pounds
Installation Type	Freestanding
Capacity	66 Gallons
Shape	Oval
UPC Certified	Yes



Image: Badges indicating the product is UPC Certified and comes with a 1-Year Warranty.

## WARRANTY AND SUPPORT

---

Your Vanity Art Freestanding Bathtub is covered by a **1-Year Warranty** from the date of purchase, covering manufacturing defects.

For customer support, technical assistance, or warranty claims, please contact Vanity Art directly. Refer to the contact information provided on the product packaging or the official Vanity Art website.

You can also visit the [Vanity Art Store on Amazon](#) for more information and support resources.