



Manuals.plus /

› HUGMAPLE /

› HUGMAPLE SG801 Professional 35000RPM Electric Nail Drill User Manual

HUGMAPLE SG801

HUGMAPLE SG801 Professional 35000RPM Electric Nail Drill User Manual

Model: SG801 | Brand: HUGMAPLE

1. IMPORTANT SAFETY INSTRUCTIONS

Please read all instructions carefully before using the HUGMAPLE SG801 Electric Nail Drill. Retain this manual for future reference.

- **Eye Protection:** Always wear appropriate eye protection during operation to prevent injury from flying debris.
- **Hand and Body Safety:** Keep hands, hair, and other body parts away from the rotating bit during operation.
- **Material Compatibility:** Do not use the nail drill on heated or flammable materials.
- **Bit Handling:** Allow the drill bit to cool completely before touching or changing it.
- **Power Source:** Use only the provided AC adapter and ensure it is connected to a compatible power outlet.
- **Water Exposure:** Do not expose the device to water or use it in wet environments.
- **Children:** Keep out of reach of children. This device is not a toy.
- **Maintenance:** Do not attempt to disassemble or repair the device yourself. Contact qualified service personnel for assistance.

2. PRODUCT OVERVIEW

The HUGMAPLE SG801 Electric Nail Drill is a professional-grade, rechargeable, and cordless device designed for various nail care tasks. It features a high-speed handpiece, an intuitive control unit, and multiple accessories for comprehensive nail treatment.

Multifunctional Design



Large LCD Screen



Adjustable Speed



F/R Direction



Battery Power



Foot/Hand Control



Figure 2.1: HUGMAPLE SG801 Electric Nail Drill Control Unit and Handpiece. Features include a large LCD screen, adjustable speed, forward/reverse direction control, battery power indicator, and foot/hand control options.

2.1 Components

- Nail Drill Machine (Control Unit)
- Handpiece
- Connecting Wire
- AC Adapter
- Nail Drill Bits (6 pieces)
- Sanding Bands (6 pieces)
- Foot Pedal

Electric Nail Drill Kit

Package Include

- Nail Drill Machine x 1
- Handpiece x 1
- Connecting Wire x 1
- AC Adaptor x 1
- Nail Drill Bits x 6
- Sanding Bands x 6



Figure 2.2: Package Contents of the HUGMAPLE SG801 Electric Nail Drill Kit.

2.2 Key Features

- **35000 RPM High Speed:** Powerful motor for efficient nail work.
- **HD LCD Display:** Clear display of speed and battery status.
- **Adjustable Speed:** Variable speed control from 0 to 35000 RPM.
- **Forward/Reverse Direction:** Easily switch rotation direction for left or right-handed use.
- **Battery Powered:** Rechargeable for cordless operation.
- **Foot/Hand Control:** Option to operate with a foot pedal or manually.
- **Low Heat, Low Noise, Low Vibration:** Designed for comfortable and quiet operation.



Figure 2.3: Key Features of the HUGMAPLE SG801 Nail Drill.

3. SETUP INSTRUCTIONS

1. **Charge the Device:** Before first use, fully charge the nail drill machine using the provided AC adapter. The battery indicator on the LCD screen will show charging progress. A full charge typically takes 3 hours and provides 8-10 hours of working time.
2. **Connect the Handpiece:** Insert the handpiece connector firmly into the designated port on the control unit.

3. **Insert a Drill Bit:** Refer to Section 5 for detailed instructions on how to safely insert and remove drill bits.
4. **Optional Foot Pedal Connection:** If using the foot pedal, plug its connector into the foot pedal port on the control unit.



Figure 3.1: Setup overview, including bit holders and handpiece holder for organization.

4. OPERATING INSTRUCTIONS

1. **Power On/Off:** Turn the main knob on the control unit to the 'ON' position to power on the device. Turn to 'OFF' to power off.
2. **Adjust Speed:** Rotate the central knob to adjust the rotational speed of the handpiece. The LCD display will show the current RPM.
 - **0-15000 RPM:** Suitable for removing dead skin, cuticle work, grinding, shaping, and polishing natural nails.
 - **15000-25000 RPM:** Medium speed for removing gel polish and dipping powder.
 - **25000-35000 RPM:** High speed for professional nail art work and efficient material removal.
3. **Change Rotation Direction (F/R):** Press the 'R/F' button to switch between forward (F) and reverse (R) rotation. The selected direction will be indicated on the LCD screen.
4. **Hand/Foot Control Mode:** Press the hand/foot icon button to switch between hand control (manual

operation) and foot pedal control. When in foot pedal mode, the handpiece will only operate when the foot pedal is pressed.

Adjustable Speed 0-35000RPM

	0-15000RPM Removing dead skin and cuticle, grinding,shaping,polishing natural nails
	15000RPM-25000RPM Medium speed to remove gel nail polish,dipping powder
	25000-35000RPM High speed to do professional nail art work efficiently



Figure 4.1: Adjustable Speed Settings and Recommended Uses.



Figure 4.2: HD LCD Display showing battery and RPM.



5. CHANGING DRILL BITS

Always ensure the device is powered off and the handpiece has cooled down before changing bits.

1. **Unlock:** Twist the handpiece chuck counter-clockwise to unlock it.
2. **Insert Bit:** Insert the desired drill bit firmly into the chuck.
3. **Lock:** Twist the handpiece chuck clockwise to lock the bit securely in place.
4. **Ready to Use:** The handpiece is now ready for operation.

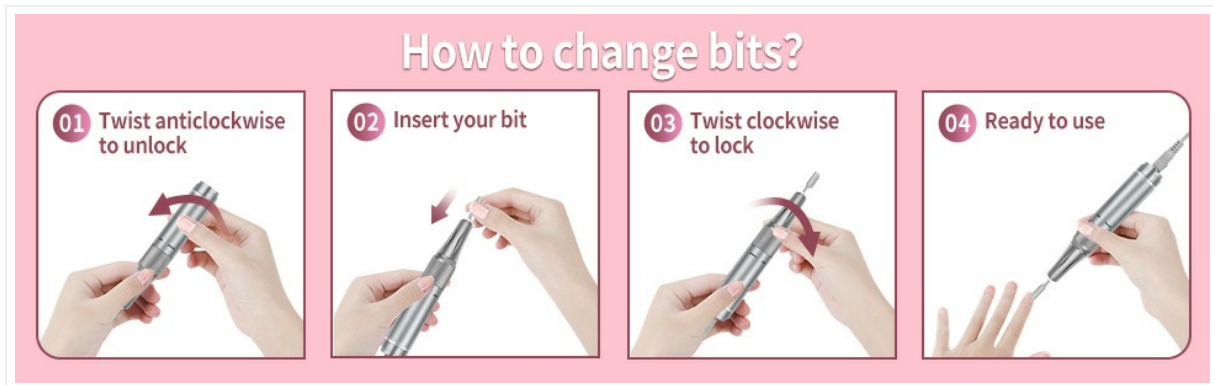


Figure 5.1: Visual guide for changing drill bits.

6. MAINTENANCE

- **Cleaning:** Wipe the control unit and handpiece with a soft, dry cloth after each use. Do not use harsh chemicals or abrasive cleaners.
- **Storage:** Store the device in a cool, dry place away from direct sunlight and moisture. Use the handpiece holder to keep it secure.
- **Bit Care:** Clean drill bits after each use to remove nail dust and debris. Replace worn or damaged bits promptly.
- **Battery Care:** To prolong battery life, avoid fully discharging the battery frequently. Charge the device regularly, even if not in use for extended periods.

7. TROUBLESHOOTING

If you encounter any issues with your HUGMAPLE SG801 Electric Nail Drill, please refer to the following common solutions:

- **Device Not Turning On:** Ensure the device is fully charged or connected to the AC adapter. Check that the power knob is in the 'ON' position.
- **Handpiece Not Rotating:** Verify that the handpiece is securely connected to the control unit. Check if a bit is properly inserted and locked. Ensure the speed is not set to 0 RPM. If using the foot pedal, ensure it is pressed and the device is in foot control mode.
- **Excessive Vibration or Noise:** This may indicate a loose or damaged drill bit. Power off the device, allow the bit to cool, and then check if the bit is securely inserted or replace it if damaged.
- **Overheating:** If the handpiece or control unit feels excessively hot, discontinue use immediately and allow it to cool down. Ensure proper ventilation and avoid prolonged continuous use at maximum speed.

If the problem persists after attempting these solutions, please contact HUGMAPLE customer support for further

assistance.

8. SPECIFICATIONS

Feature	Specification
Brand Name	HUGMAPLE
Model Name	SG801
Item Model Number	SG801-PK
Power Source	Battery Powered
Maximum Rotational Speed	35000 RPM
Material Type	Plastic
Package Dimensions	9.88 x 8.58 x 4.33 inches
Item Weight	1.88 Pounds

9. WARRANTY AND SUPPORT

For warranty information or technical support, please refer to the documentation included with your purchase or contact HUGMAPLE customer service directly. Contact details can typically be found on the official HUGMAPLE website or on the product packaging.