

[Manuals.plus](#) /

> [NHOPEEW](#) /

> NHOPEEW 10-inch Single DIN Android Car Stereo User Manual (Model SHA23\_AHD\_00012\_V009)

## NHOPEEW SHA23\_AHD\_00012\_V009

# NHOPEEW 10-inch Single DIN Android Car Stereo User Manual

Model: SHA23\_AHD\_00012\_V009

## 1. INTRODUCTION

---

This manual provides detailed instructions for the installation, operation, and maintenance of your NHOPEEW 10-inch Single DIN Android Car Stereo. Please read this manual thoroughly before using the product to ensure proper functionality and safety. Keep this manual for future reference.

## 2. PACKAGE CONTENTS

---

Verify that all items listed below are included in your package:

- Single DIN Car Radio (Main Unit)
- AHD Backup Camera
- External Microphone
- Installation Harness
- RCA Cable
- GPS Antenna
- USB Cables (2)
- Mounting Brackets



Figure 2.1: Included components in the NHOPEEW car stereo package.

### 3. SPECIFICATIONS

Feature	Detail
Model	SHA23_AHD_00012_V009
Operating System	Android 13.0
Processor	Quad Core A7 1.5GHz x 4
RAM	2GB DDR
Internal Storage (ROM)	64GB Flash (Note: Product description states 64GB, system info states 32GB. Please verify upon receipt.)
Display Size	10 Inches
Display Type	2.5D Tempered Glass Capacitive Touch Screen
Resolution	1024x600 (Ivds)
Connectivity	Bluetooth, USB, Wi-Fi
Bluetooth Version	Bluetooth 4.0 (MT6625)
Radio	FM RDS Radio (FM76.0MHz-108.0MHz)
Audio Output Mode	Stereo, supports Subwoofer
Video Resolution	1080P
Power Output	4*45W

<b>Voltage</b>	12V
<b>Dimensions</b>	10 x 10 x 10 inches
<b>Weight</b>	4.77 pounds



**Android 11**  **10 inch**

CarPlay Android Auto FM Radio Bluetooth WIFI GPS

**DISPLAY**  
2.5D tempered glass  
10inch HD screen  
1024x600 resolution

**MUSIC**  
Lossless music play  
Good sound quality  
Mp3/ape/flac/wav...

**VIDEO**  
HD 1080P video play  
Clear picture quality  
Mp4/mov/mkv/avi...

**HARDWARE**  
4core powerful CPU  
RAM: 2GB ROM: 32GB  
8227L-DEMO

**NAVIGATE**  
Online map  
start navigation

**BLUETOOTH**  
Bluetooth music  
play Hands free phone  
call import phone book

**INSTALLER**  
Free connection to  
WiFi installation  
map and software store

**REVERSE**  
Vehicle connected to  
reverse gear  
automatic switching

**RADIO**  
High sensitivity radio  
One click search  
Automatic storage

Figure 3.1: Overview of NHOPEEW Car Stereo features and specifications.

## 4. SETUP AND INSTALLATION

Professional installation is recommended. Ensure the vehicle's power is disconnected before beginning installation.

### 4.1. Floating Head Unit Assembly

The NHOPEEW car stereo features a floating display design, allowing for adjustable viewing angles. Follow the steps below to assemble the display to the single DIN chassis:

# Floating Headunit



Figure 4.1: Floating Head Unit Assembly Steps.

1. Align the display panel with the mounting mechanism on the single DIN chassis.
2. Secure the display using the provided screws.
3. Adjust the display angle as desired. The display can rotate up to 20 degrees.
4. Ensure all connections are firm before final mounting.

## 4.2. Wiring Connections

Connect the included wiring harness to your vehicle's electrical system. Refer to your vehicle's wiring diagram for specific connections. The main power harness includes connections for constant power (yellow), accessory power (red), and ground (black).

**Important:** The white plug for the reversing input must be connected to the main device even if the reversing camera is not used, to ensure proper Bluetooth and Wi-Fi signal reception.

### 4.2.1. Reversing Camera Installation

For the AHD backup camera, follow these wiring instructions:

## Reversing Camera Installation

Tip: The reversing input must be plugged in even when the reversing camera is not used.

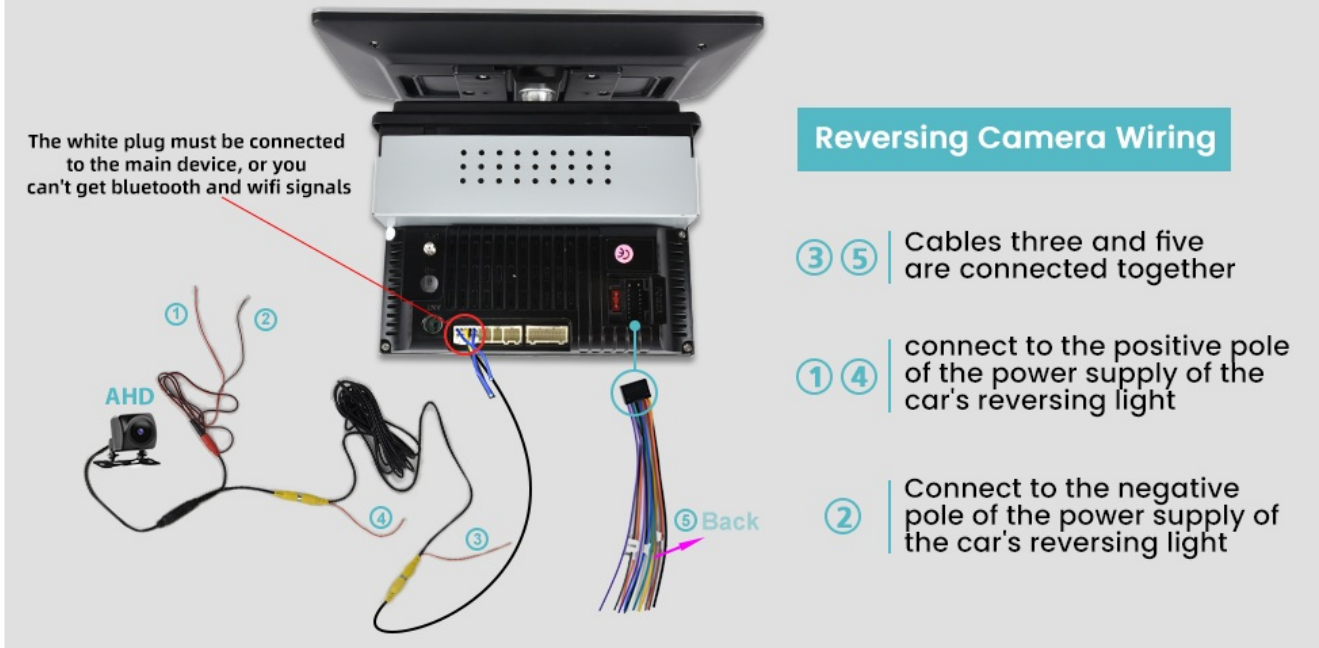


Figure 4.2: Reversing Camera Wiring Diagram.

1. Connect the camera's power cable (red wire) to the positive pole of the car's reversing light.
2. Connect the camera's ground cable (black wire) to the negative pole of the car's reversing light.
3. Connect the video signal cable from the camera to the "Camera Input" on the car stereo.
4. Ensure the white plug for the reversing input on the main harness is connected to the stereo.

### 4.3. Steering Wheel Control Setup

After physical installation, you need to configure the steering wheel controls through the stereo's settings menu.



### Note:

After installation, you need to complete the steering wheel button learning in the "Settings-Steering Learn", and then you can use the steering wheel control function.

Figure 4.3: Steering Wheel Control Learning Interface.

1. Navigate to the "Settings" menu on the car stereo.
2. Select "Steering Learn" or a similar option.
3. Follow the on-screen prompts to assign functions to your vehicle's steering wheel buttons.

## 5. OPERATING INSTRUCTIONS

### 5.1. Basic Operation

- **Power On/Off:** Press and hold the power button (usually a physical button or on-screen icon) to turn the unit on or off. A short press typically mutes or unmutes audio.
- **Volume Control:** Use the physical knob or on-screen controls to adjust the volume.
- **Touchscreen:** The 10-inch 2.5D Tempered Glass capacitive touch screen provides a responsive interface. Navigate by tapping, swiping, and pinching.



**Ultra-clear Picture Quality**

HD 10-inch capacitive touch screen, resolution 1024 \* 600, larger and clearer screen, give you wonderful visual experience

2.5D

10" 10 inch HD 2.5D 2.5D Screen

The advertisement features a large 10-inch capacitive touch screen displaying a woman in a shimmering dress. Below the screen is a control panel with icons for MIC, home, microphone, a volume knob, a window icon, a phone icon, and a RST button. Two callout boxes at the bottom highlight the '10 inch HD' and '2.5D Screen' features. A circular inset shows a close-up of the 2.5D screen's curved edge with red arrows pointing to the curvature.

Figure 5.1: Ultra-clear Picture Quality of the 10-inch Display.

## 5.2. Wireless & Wired Apple CarPlay / Android Auto

Connect your iPhone or Android smartphone to access navigation, make calls, send messages, and play music directly from your phone's interface on the stereo screen.



Figure 5.2: Apple CarPlay and Android Auto Interface.

- **Wireless Connection:** Enable Bluetooth and Wi-Fi on your smartphone and pair it with the car stereo. Follow the on-screen prompts to initiate CarPlay or Android Auto.
- **Wired Connection:** Connect your smartphone to one of the USB ports using a certified USB cable. The system should automatically launch CarPlay or Android Auto.
- **Voice Control:** Utilize voice commands (e.g., "Hey Siri" or "Ok Google") for hands-free operation.

## 5.3. GPS Navigation & Wi-Fi

The stereo features built-in GPS and Wi-Fi for navigation and internet connectivity.

# GPS Navigation & Wi-Fi

Android 11 operating system, 2GB RAM & 32GB ROM. Easy to connect WiFi and hotspot, support both online and offline navigation, you can download online GPS apps like Waze, Sygic, and other apps, or to get offline map source to use satellite navigation.



Figure 5.3: GPS Navigation and Wi-Fi Interface.

- **GPS Navigation:** The unit supports both online and offline navigation. Pre-installed navigation apps or downloaded apps can be used. Ensure the GPS antenna is properly installed for optimal signal reception.
- **Wi-Fi Connection:** Connect to a Wi-Fi network or your phone's hotspot to access online features, download apps, and update software.

## 5.4. Hi-Fi Audio

Experience high-fidelity audio with the built-in Hi-Fi Audio system, designed to deliver a concert-like sound experience. The unit also supports subwoofer output for enhanced bass.

# Hi-Fi Audio

Build-in Hi-Fi Audio make your car become a moveable great live sound cinema and you can enjoy this sound in the car, support subwoofer.



Figure 5.4: Hi-Fi Audio Experience.

- **Audio Settings:** Access the audio settings menu to adjust equalizer, balance, fader, and subwoofer levels to customize your sound.
- **Media Playback:** Play music from various sources including USB, Bluetooth, and streaming apps.

## 5.5. Other Functions

- **Bluetooth Hands-Free Calling:** Pair your phone via Bluetooth to make and receive calls safely.
- **Dual USB Ports:** Use the USB ports for media playback, charging devices, or connecting to wired CarPlay/Android Auto.
- **Split Screen:** Utilize the split-screen feature to run two applications simultaneously (e.g., navigation and music player).
- **FM RDS Radio:** Tune into your favorite FM radio stations with RDS (Radio Data System) support for station information.
- **Video and Audio Output:** Connect external displays or audio amplifiers using the RCA output cables.

## 6. MAINTENANCE

- **Screen Cleaning:** Use a soft, lint-free cloth to gently wipe the touchscreen. Avoid abrasive cleaners or solvents.
- **Software Updates:** Periodically check for software updates via Wi-Fi to ensure optimal performance and access to new features.
- **General Care:** Avoid exposing the unit to extreme temperatures, direct sunlight for prolonged periods, or excessive moisture.

## 7. TROUBLESHOOTING

---

Problem	Possible Cause	Solution
Unit does not power on.	Incorrect wiring, blown fuse, insufficient power.	Check power connections (yellow, red, black wires). Verify vehicle fuse. Ensure adequate power supply.
No sound.	Volume muted, incorrect audio settings, speaker wiring issues.	Check volume level and mute status. Verify audio output settings. Inspect speaker wiring.
CarPlay/Android Auto not connecting.	Incorrect phone settings, faulty USB cable, Wi-Fi/Bluetooth issues.	Ensure phone's Wi-Fi/Bluetooth is on. Try a different USB cable. Restart both phone and stereo. Check phone's CarPlay/Android Auto settings.
GPS signal weak or inaccurate.	GPS antenna improperly installed or obstructed.	Ensure GPS antenna has a clear view of the sky and is securely connected.
Backup camera not displaying.	Camera wiring issue, white plug not connected.	Verify camera power and video signal connections. Ensure the white reversing input plug is connected to the main unit.

## 8. WARRANTY AND SUPPORT

---

NHOPEEW is committed to providing excellent customer service and product support.

# We Provide



- ◆ 7\*24 hours of after-sales service.
- ◆ 30-day Money-Back.
- ◆ 2-years after sales support.
- ◆ If the harness you receive does not fit, please contact us immediately and we will replace it with a suitable harness for free.



Figure 8.1: NHOPEEW After-Sales Service Commitment.

- **Warranty:** This product comes with a 2-year after-sales support period.
- **Money-Back Guarantee:** Enjoy a 30-day money-back guarantee from the date of purchase.
- **Technical Support:** We provide 7\*24 hours of after-sales service. For any issues, questions, or if the provided harness does not fit your vehicle, please contact us immediately. We will assist you with troubleshooting or arrange for a suitable replacement harness if necessary.
- **Contact Information:** Refer to your purchase documentation or the official NHOPEEW website for specific contact details.