

Cecotec 02610

Cecotec TV 0 Series 24" HD Television User Manual

Model: **02610** | Brand: **Cecotec**

INTRODUCTION

This user manual provides comprehensive instructions for the setup, operation, maintenance, and troubleshooting of your Cecotec TV 0 Series 24" HD Television. Designed for optimal image and video resolution, this television features a Dolby sound system, high-speed flash memory, and versatile HDMI/USB connectivity. Please read this manual thoroughly before using your television to ensure proper functionality and safety.



Figure 1: Cecotec TV 0 Series 24" HD Television, showcasing its sleek design and display.

1. SETUP

1.1 Unboxing and Initial Placement

Carefully remove the television and all accessories from the packaging. Place the television on a stable, flat surface or mount it securely to a wall using a compatible VESA mount (not included). Ensure adequate ventilation around the television.

1.2 Connecting the Stand (Optional)

If using the included stand, attach it to the television according to the diagrams provided. Ensure all screws are tightened securely to prevent the television from tipping.



Figure 2: Television dimensions and typical port locations, useful for planning setup and connections.

1.3 Connecting External Devices

Your Cecotec TV 0 Series features HDMI and USB connectivity for various external devices.

- **HDMI:** Connect set-top boxes, gaming consoles, Blu-ray players, or other HDMI-enabled devices to the HDMI ports.
- **USB:** Connect USB storage devices (e.g., flash drives) to the USB port for media playback.
- **Antenna/Cable:** Connect your antenna or cable TV source to the appropriate input.



Figure 3: Illustration of HDMI connectivity, highlighting its role as a High-Definition Multimedia Interface.

1.4 Power Connection

Once all desired devices are connected, plug the power cord into the television's power input, and then into a wall outlet. The television is now ready for initial power-on.

2. OPERATING INSTRUCTIONS

2.1 First-Time Setup Wizard

Upon first power-on, the television will guide you through an initial setup wizard. This typically includes language selection, country/region, channel scanning, and network setup (if applicable for Android OS features).

2.2 Remote Control Functions

The included remote control allows you to access all television functions. Insert 2 AAA batteries (not included) into the remote control before use.

- **Power Button:** Turns the TV on or off.
- **Input/Source:** Selects the input source (HDMI 1, HDMI 2, USB, TV).
- **Volume +/-:** Adjusts the volume level.
- **Channel +/-:** Changes TV channels.
- **Navigation Buttons (Up/Down/Left/Right/OK):** Navigates menus and confirms selections.
- **Menu:** Accesses the main settings menu.
- **Exit/Back:** Returns to the previous screen or exits the current menu.

2.3 Picture and Sound Settings

Access the TV's menu to adjust picture and sound settings to your preference. The television features HD resolution for optimal image clarity and a Dolby system for enhanced audio experience.



Figure 4: Visual representation of 1080P Full HD resolution, indicating superior image quality.

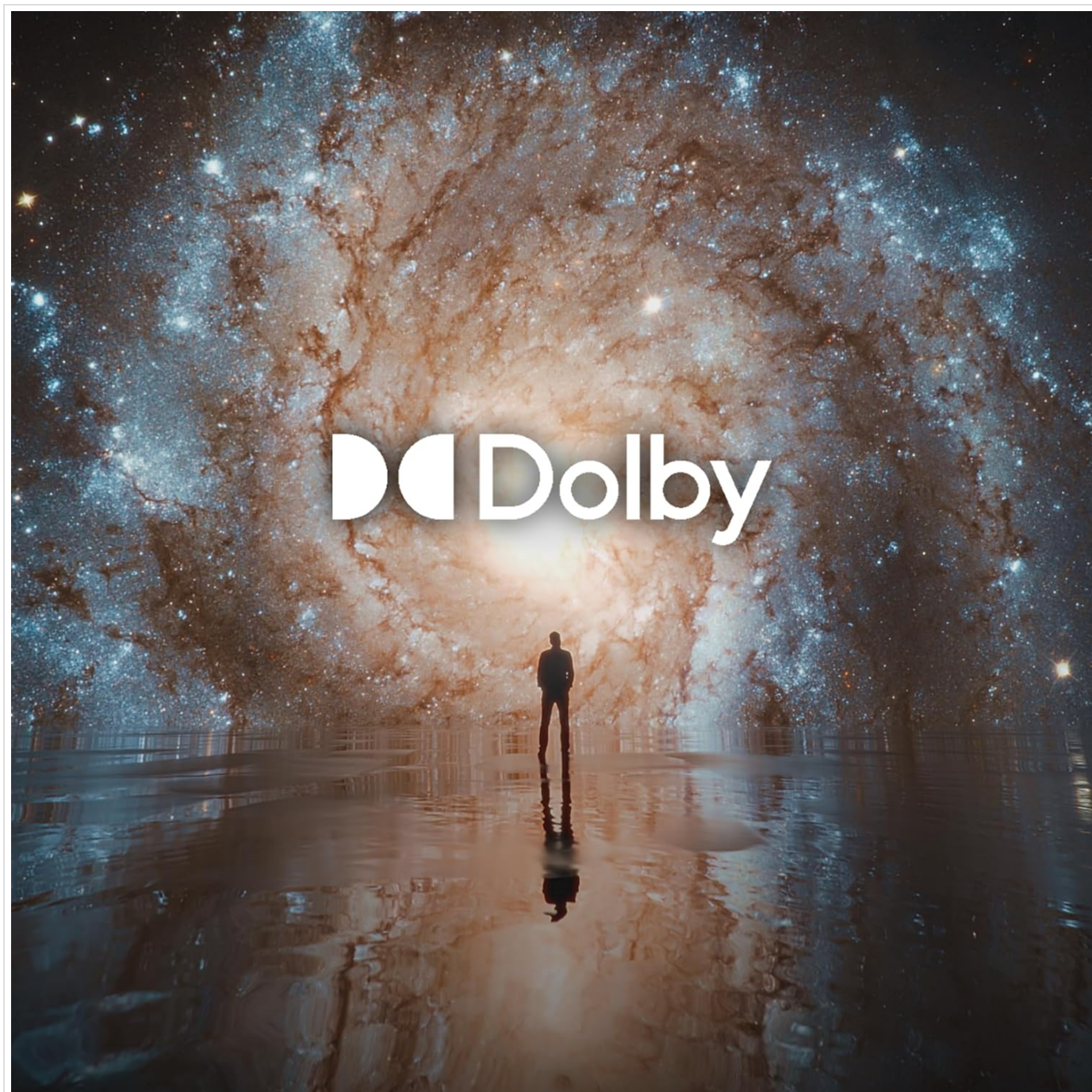


Figure 5: The Dolby logo, signifying advanced audio technology for an immersive sound experience.

2.4 Media Playback via USB

Insert a USB flash drive into the television's USB port. The TV's media player will typically detect the device and allow you to browse and play supported video, audio, and image files stored on the drive. The integrated flash memory technology ensures high-speed data access.



Figure 6: Diagram illustrating flash memory technology, indicating fast data storage and retrieval.

3. MAINTENANCE

3.1 Cleaning the Television

Before cleaning, unplug the television from the power outlet. Use a soft, dry cloth to wipe the screen and cabinet. For stubborn marks, lightly dampen the cloth with water or a mild, non-abrasive screen cleaner. Never spray liquid directly onto the screen or cabinet.

3.2 Storage

If storing the television for an extended period, disconnect all cables and store it in a cool, dry place, preferably in its original packaging to protect it from dust and physical damage.

4. TROUBLESHOOTING

Refer to the table below for common issues and their solutions. If the problem persists, please contact customer support.

Problem	Possible Cause	Solution
No power	Power cord disconnected; no power from outlet.	Ensure power cord is securely plugged in. Check wall outlet with another device.
No picture, but sound is present	Incorrect input source selected; loose HDMI cable.	Press the "Input" or "Source" button on the remote to select the correct input. Check HDMI cable connections.
No sound, but picture is present	Volume muted or too low; incorrect audio output settings.	Increase volume. Check TV audio settings and external device audio settings.
Remote control not working	Batteries are dead or incorrectly inserted; obstruction between remote and TV.	Replace batteries. Ensure clear line of sight to the TV's IR receiver.
Poor picture quality	Weak signal; incorrect picture settings.	Check antenna/cable connection. Adjust picture settings in the TV menu.

5. SPECIFICATIONS

Feature	Detail
Brand	Cecotec
Model Number	02610
Screen Size	24 Inches (61 cm)
Display Technology	LED
Resolution	1080p (Optimal Image and Video Resolution)
Refresh Rate	60 Hz
Operating System	Android
Connectivity	HDMI, USB (1 Total USB Port)
Audio System	Dolby
Special Features	Flat Screen, Flash Memory
Aspect Ratio	16:9
Color	Black
Product Dimensions (D x W x H)	10.3 cm x 60.2 cm x 37.5 cm
Included Components	Remote Control
Power Source	100-240V
Energy Efficiency Class	E

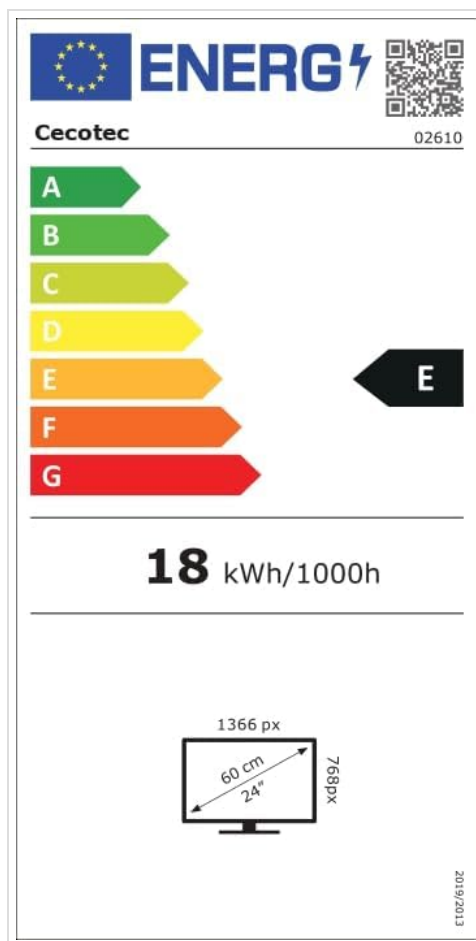


Figure 7: Energy Efficiency Label for the Cecotec TV, indicating Class E rating.

For more detailed energy information, scan the QR code on the label or visit: [EPREL Product Information](#)

6. WARRANTY AND SUPPORT

Cecotec products are manufactured to high-quality standards. For information regarding warranty coverage, please refer to the warranty card included with your product or visit the official Cecotec website. Please note that specific information regarding spare parts availability and guaranteed software updates is not available at this time.

For technical support, troubleshooting assistance beyond this manual, or service inquiries, please contact Cecotec customer service through their official channels. Keep your purchase receipt as proof of purchase for any warranty claims.

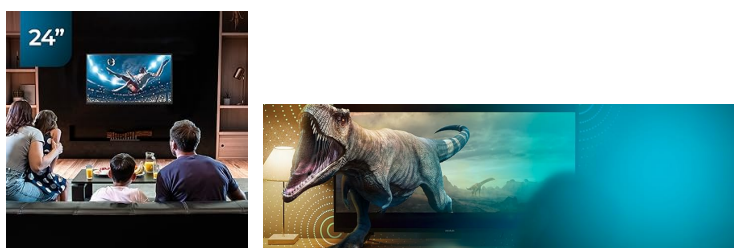
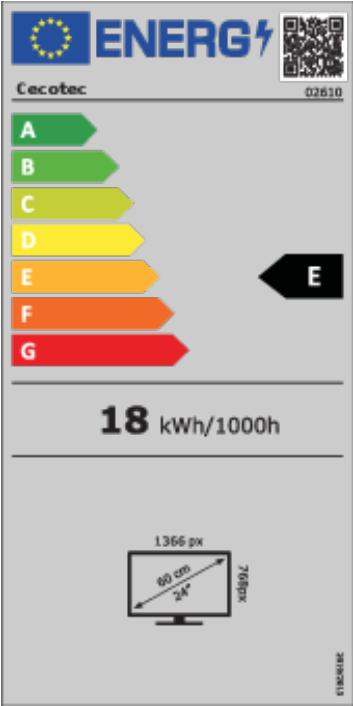


Figure 8: Cecotec's commitment to technology for everyone and dedicated customer care.



[pdf]

02610 TV Series 0024 EL YV 01230414 PlytixCecotec A B ENERG C D E F G 18 kWh 1000h 1366 px
60 cm 24 768px 2019 2013files plytix api v1 1 file public files pim assets 3b 55 d9 62
62d9553be8b24d002a3f8cc2 texts 23 6e cc 65 65cc6e23899564c8f759be28 |||

Cecotec ...

lang:es score:12 filesize: 187.55 K page_count: 1 document date: 2023-04-14