

[Manuals.plus](#) /

› [Ertuly](#) /

› Ertuly R15 Bone Conduction Open Ear Earbuds User Manual

Ertuly R15

Ertuly R15 Bone Conduction Open Ear Earbuds User Manual

Model: R15

1. INTRODUCTION

Thank you for choosing the Ertuly R15 Bone Conduction Open Ear Earbuds. These earbuds are designed to provide a comfortable listening experience while maintaining awareness of your surroundings. Featuring Bluetooth 5.3 connectivity, a lightweight clip-on design, and a charging case with an LED display, the R15 earbuds are suitable for various activities including sports, running, and daily use. This manual provides detailed instructions for setup, operation, maintenance, and troubleshooting to ensure optimal performance and longevity of your device.

2. PACKAGE CONTENTS

Please verify that all items are present in your package:

- 1 x Ertuly R15 Open Ear Earbuds (Left and Right)
- 1 x Charging Case
- 1 x Type-C Charging Cable
- 1 x User Manual (this document)

3. PRODUCT OVERVIEW

The Ertuly R15 earbuds feature a unique clip-on design that rests gently on your ear, allowing for open-ear listening. The charging case provides portable power and includes an LED display to indicate battery levels.



Image: Ertuly R15 Bone Conduction Open Ear Earbuds shown within their charging case. The case features a digital LED display indicating battery percentage for the case and individual earbuds.

Key Features:

- **Open Ear Design:** Allows you to hear your surroundings for increased safety.
- **Bluetooth 5.3:** Provides stable and efficient wireless connectivity.
- **Lightweight & Comfortable:** Designed for extended wear without discomfort.
- **IPX6 Waterproof:** Resistant to sweat and splashes, suitable for workouts.
- **Hi-Fi Stereo Sound:** Delivers clear audio quality.
- **Binaural HD Calls:** Enhanced call clarity.
- **LED Power Display:** Shows battery status of the case and earbuds.

4. SETUP

4.1 Initial Charging

Before first use, fully charge the earbuds and the charging case.

1. Place both earbuds into the charging case.
2. Connect the provided Type-C charging cable to the charging port on the case and a USB power source (e.g., wall adapter, computer USB port).
3. The LED display on the charging case will show the current battery percentage. The earbuds will also show charging indicators (L and R).
4. A full charge typically takes approximately 1 hour. Once fully charged, disconnect the cable.

4.2 Pairing with Your Device

The Ertuly R15 earbuds support automatic connection and pairing.

1. Ensure the earbuds are charged.
2. Open the charging case. The earbuds will automatically enter pairing mode.
3. On your smartphone or Bluetooth-enabled device (Android, iPhone, Windows), go to the Bluetooth settings.
4. Search for available devices and select "R15" from the list.
5. Once connected, you will hear a confirmation tone, and the earbuds will be ready for use.
6. For subsequent uses, the earbuds will automatically connect to the last paired device when removed from the case and Bluetooth is enabled on your device.

5. WEARING INSTRUCTIONS

The R15 earbuds feature an ergonomic clip-on design for a secure and comfortable fit without entering the ear canal.

1. Identify the Left (L) and Right (R) earbuds.
2. Gently clip the earbud onto your earlobe, positioning the speaker component near your ear canal but not inside it.
3. Adjust the earbud for a snug and comfortable fit. The flexible silicone ear clips are designed to conform to your ear's contours.

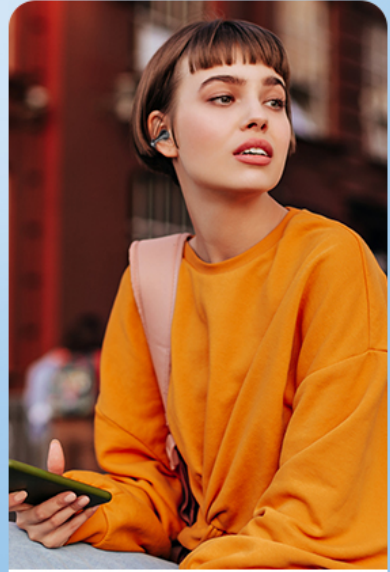
FIT YOUR STYLE ANYWHERE, ANYTIME



SPORT



SHARE



TWIN

Image: A visual guide demonstrating the correct method for wearing the Ertuly R15 open-ear earbuds, showing how they clip onto the ear.

This open-ear design allows you to wear glasses or masks without interference and reduces pressure on the ears.

6. OPERATING THE EARBUDS

The Ertuly R15 earbuds are controlled via physical buttons on each earbud.

CLIP EAR HEADPHONES ALSO FOR KIDS

Not only for adults with small ears
but also great for kids!



Image: A diagram illustrating the button controls for the Ertuly R15 earbuds, showing actions for single click, double click, and triple click for music playback, calls, and voice assistant.

6.1 Music Playback

- **Play/Pause:** Single click either the Left (L) or Right (R) earbud button.
- **Next Track:** Double click the Right (R) earbud button.
- **Previous Track:** Double click the Left (L) earbud button.

6.2 Phone Calls

- **Answer/End Call:** Single click either the Left (L) or Right (R) earbud button.
- **Reject Call:** Press and hold either earbud button for 2 seconds.

6.3 Voice Assistant

- **Activate Voice Assistant:** Triple click either the Left (L) or Right (R) earbud button.

7. MAINTENANCE

Proper care ensures the longevity and performance of your Ertuly R15 earbuds.

- **Cleaning:** Use a soft, dry, lint-free cloth to clean the earbuds and charging case. Do not use harsh chemicals or abrasive materials.
- **Storage:** When not in use, store the earbuds in their charging case to protect them from dust and damage. Store in a cool, dry place.
- **Water Resistance:** The earbuds are IPX6 waterproof, meaning they are resistant to strong jets of water. However, they are not designed for submersion in water. Avoid exposing them to excessive moisture or liquids.
- **Charging:** Only use the provided Type-C cable or a certified equivalent for charging.

8. TROUBLESHOOTING

If you encounter issues with your Ertuly R15 earbuds, please refer to the following solutions:

Problem	Possible Cause	Solution
Earbuds do not turn on.	Low battery.	Place earbuds in the charging case and charge fully.
Cannot pair with device.	Bluetooth is off; earbuds not in pairing mode; device too far.	Ensure Bluetooth is enabled on your device. Open the charging case to activate pairing mode. Keep earbuds within 10 meters of your device. Try forgetting the device in Bluetooth settings and re-pairing.
No sound or low volume.	Device volume too low; earbuds not properly worn; connection issue.	Increase volume on your connected device. Adjust earbuds for proper placement. Reconnect the earbuds to your device.

Problem	Possible Cause	Solution
Earbuds disconnect randomly.	Low battery; interference; device too far.	Ensure earbuds are fully charged. Move closer to your device. Avoid environments with strong Wi-Fi or other Bluetooth signals.
One earbud has no sound.	Individual earbud connection issue; low battery on one earbud.	Place both earbuds back into the charging case, close the lid, then open it again to re-establish connection. Ensure both earbuds are charged.

9. SPECIFICATIONS

Feature	Detail
Model	R15
Brand	Ertuly
Connectivity Technology	Wireless (Bluetooth)
Bluetooth Version	5.3
Bluetooth Range	Up to 10 meters (33 feet)
Audio Driver Type	Bone Conduction Driver
Ear Placement	Open Ear (Clip-on Design)
Battery Life (Earbuds)	Approximately 4 hours per charge
Charging Time	Approximately 1 hour
Water Resistance Level	IPX6 (Sweat and splash resistant)
Control Type	Physical Button Control
Compatible Devices	Cellphones (Android, iPhone), Windows devices
Material	Plastic
Item Weight	0.423 ounces (per earbud, approx.)
Product Dimensions	4.4 x 1.6 x 6.3 inches (packaging/case approx.)

10. SAFETY INFORMATION

- Hearing Protection:** To protect your hearing, avoid listening at excessively high volumes for prolonged periods. The open-ear design helps maintain situational awareness, which is beneficial for safety.

- **Driving Safety:** Do not use earbuds while driving or cycling if it distracts you or is prohibited by local laws.
- **Choking Hazard:** Keep earbuds and small parts away from children and pets to prevent accidental ingestion.
- **Temperature:** Do not expose the product to extreme temperatures (hot or cold) or direct sunlight.
- **Disassembly:** Do not attempt to disassemble or modify the earbuds or charging case, as this may void the warranty and cause damage.

11. WARRANTY AND SUPPORT

Ertuly is committed to providing high-quality products and excellent customer service. For any questions or concerns regarding your Ertuly R15 Bone Conduction Open Ear Earbuds, please contact our customer support team.

Our customer service team aims to respond to inquiries within 24 hours. Please refer to the contact information provided with your purchase or visit the official Ertuly website for support details.