

## Colop e-Mark Go

# Colop e-Mark Go Portable Digital Stamp Printer User Manual

Model: e-Mark Go (164238)

## 1. INTRODUCTION

Welcome to the user manual for your new Colop e-Mark Go Portable Digital Stamp Printer. This innovative device offers a versatile solution for multi-color printing on a wide range of absorbing surfaces. Designed for ease of use and portability, the e-Mark Go allows you to personalize items with custom designs, text, and images directly from your smartphone.

Key features include:

- **Multi-Color Printing on Almost Any Surface:** Easily print vibrant, multi-color designs on a wide range of absorbing surfaces such as paper, cardboard, ribbon, and more.
- **LED Light Guide for Precision:** Built-in LED light guide ensures accurate placement and alignment for consistent, high-quality prints every time.
- **Free Intuitive App:** Comes with a free, easy-to-use app that lets you create and customize your own stamps, logos, text, and images effortlessly.
- **Ultra-Compact Design:** The e-Mark Go is lightweight and sleek, making it perfect for on-the-go use, easy portability, and storage.
- **Proudly Developed and Made in Austria:** Engineered and manufactured in Austria, ensuring high-quality craftsmanship, innovation, and reliability you can trust.

## 2. PRODUCT OVERVIEW

The Colop e-Mark Go set includes the portable printer and essential accessories to get you started.



Figure 2.1: Colop e-Mark Go printer set, showing the printer, its packaging, ruler, ribbon guide, and cotton ribbon.

#### What's in the Box:

- Colop e-Mark Go Portable Digital Stamp Printer
- Inkjet Cartridges (included)
- Ruler (as shown in product images)
- Ribbon Guide (as shown in product images)



Figure 2.2: The compact Colop e-Mark Go printer fits comfortably in the palm of a hand, highlighting its portability.

### 3. SETUP

---

Before using your e-Mark Go, ensure it is properly set up and charged.

#### 3.1 Charging the Device

The e-Mark Go is equipped with a Lithium Ion battery. Connect the device to a power source using the provided USB Type C cable. The battery indicator lights on the device will show charging status.

#### 3.2 App Installation and Connection

The Colop e-Mark Go operates via a free, intuitive mobile application. Search for the 'e-Mark Go' app on your smartphone's app store (compatible with Android and other smartphones).

1. Download and install the 'e-Mark Go' app.
2. Ensure your e-Mark Go printer is powered on.
3. Enable Wi-Fi on your smartphone. The e-Mark Go connects wirelessly via Wi-Fi.
4. Open the app and follow the on-screen instructions to connect your device.

### 4. OPERATING THE E-MARK GO

---

The e-Mark Go allows for creative and precise printing on various materials.

#### 4.1 Creating and Customizing Imprints

Use the 'e-Mark Go' app to design your imprints. The app provides tools to create custom stamps, logos, text, and images. You can adjust colors, fonts, and layouts to suit your needs.

## 4.2 Printing Process

Once your design is ready in the app, transfer it to the e-Mark Go printer. The built-in LED light guide assists in accurate placement for consistent results.



Figure 4.1: Demonstrating the printing motion of the e-Mark Go on paper, guided by hand.

The e-Mark Go is designed for printing on absorbing surfaces such as:

- Banner paper
- Card stock
- Envelopes
- Fabric
- And more!



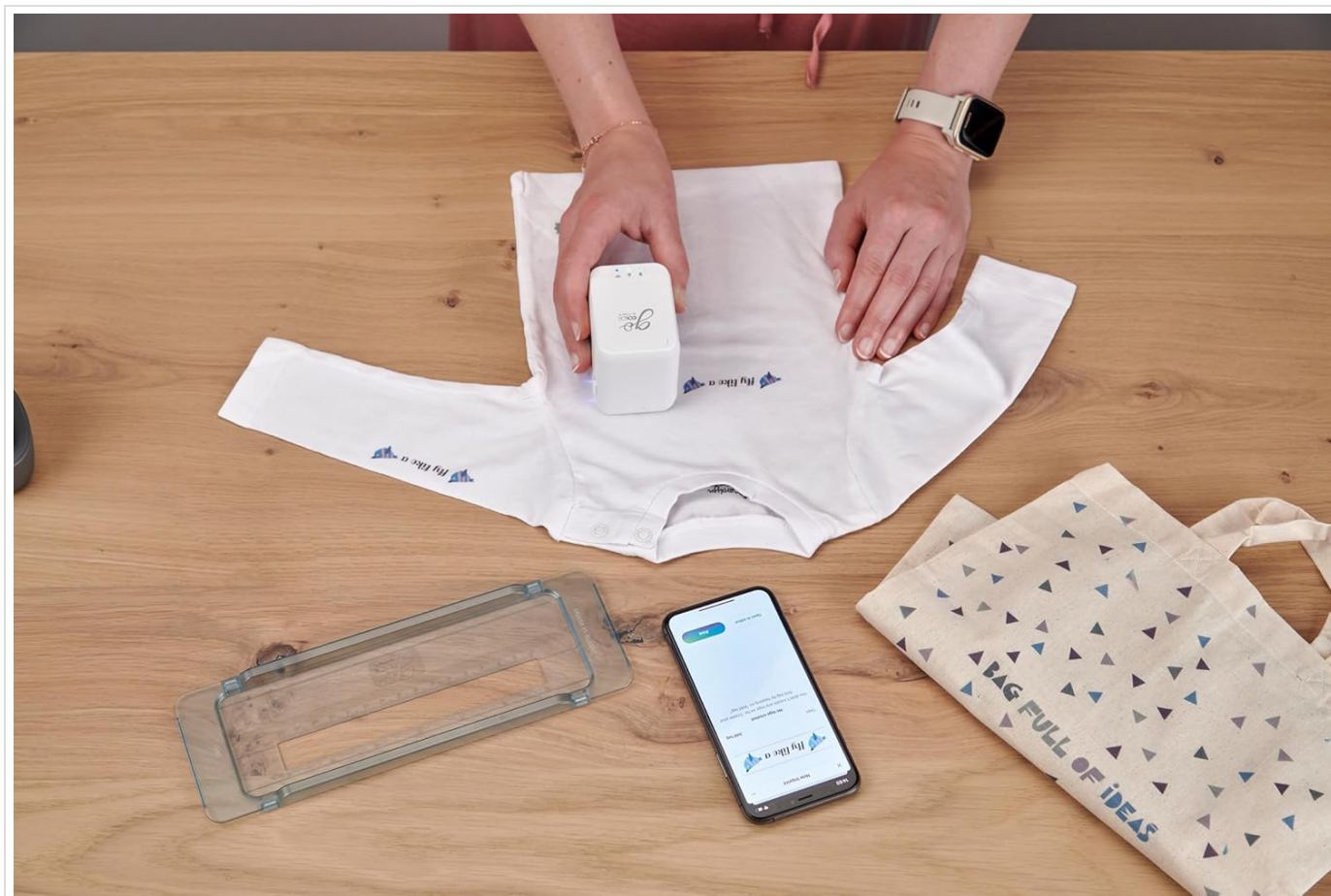


Figure 4.2: Printing a design onto fabric, showcasing the versatility of the e-Mark Go.



Figure 4.3: Using the e-Mark Go with a guide to print on wooden tags, demonstrating precision.





Figure 4.4: Applying a design to a canvas shoe using the e-Mark Go and its guide.



Figure 4.5: The e-Mark Go being used for creative projects, suitable for various users.

### 4.3 Official Product Video: Printing on Different Surfaces

Video 4.1: This video demonstrates the Colop e-Mark Go's capability to print on various surfaces, including paper, fabric, and wood, showcasing its versatility and ease of use.

## 5. MAINTENANCE

Proper maintenance ensures the longevity and optimal performance of your e-Mark Go printer.

### 5.1 General Care

- Keep the device clean and free from dust and debris. Use a soft, dry cloth for cleaning the exterior.
- Avoid exposing the printer to extreme temperatures or direct sunlight.
- Store the printer in a safe place when not in use to prevent damage.

### 5.2 Ink Cartridge Replacement

The e-Mark Go uses inkjet cartridges. When print quality diminishes or the app indicates low ink, it's time to replace the cartridge. Refer to the app or the manufacturer's website for specific instructions on how to safely replace the ink cartridge.

## 6. TROUBLESHOOTING

If you encounter issues with your e-Mark Go, try the following basic troubleshooting steps:

- **Device Not Connecting:** Ensure the printer is charged and powered on. Check your smartphone's Wi-Fi settings and confirm it's connected to the e-Mark Go's network (if applicable, or ensure Bluetooth is on if it connects via Bluetooth, though Wi-Fi is specified). Restart both the printer and the app.
- **Poor Print Quality:** Check the ink cartridge level in the app. If low, replace the cartridge. Ensure the print surface is suitable (absorbing material). Clean the print head if necessary, following instructions in the app or manufacturer's guide.
- **App Issues:** Ensure your app is updated to the latest version. Try restarting the app or your smartphone.

For more detailed troubleshooting or persistent issues, please refer to the official Colop support resources.

## 7. SPECIFICATIONS

Feature	Detail
Brand	Colop
Model Name	e-Mark Go
Item Model Number	164238
Product Dimensions	2.89"D x 2.15"W x 2.74"H
Item Weight	6.3 ounces (178 Grams)
Connectivity Technology	Wi-Fi
Printing Technology	Inkjet
Printer Output	Color

Feature	Detail
Ink Color	Cyan, magenta, yellow
Maximum Color Print Resolution	600 Dots Per Inch
Compatible Devices	Smartphones (Android Controller Type)
Control Method	App
Power Source	1 Lithium Ion battery required (included)
Hardware Interface	USB Type C
Print Media	Banner paper, Card stock, Envelopes, Fabric

## 8. WARRANTY AND SUPPORT

For information regarding the product warranty, please refer to the documentation included with your Colop e-Mark Go or visit the official Colop website. Support contact details and frequently asked questions can also be found on the manufacturer's website.

The Colop e-Mark Go is proudly developed and made in Austria, reflecting high-quality craftsmanship and reliability.