

iKF iKF-King

iKF King Wireless Active Noise Cancelling Headphones User Manual

Model: iKF-King

INTRODUCTION

Thank you for choosing the iKF King Wireless Active Noise Cancelling Headphones. These headphones are designed to provide a superior audio experience with advanced noise cancellation, powerful bass, and comfortable wear. This manual will guide you through the setup, operation, and maintenance of your new headphones to ensure optimal performance and longevity.

WHAT'S IN THE BOX

Please check the package contents to ensure all items are present:

- iKF King Wireless Active Noise Cancelling Headphones
- Charging Cable (USB-C)
- AUX-in Audio Cable (3.5mm)
- User Manual

Official Packaging



Image: Official Packaging and Product Dimensions. This image illustrates the items included in the box and provides detailed size specifications for the headphones and earcups.

PRODUCT OVERVIEW

The iKF King headphones feature a sleek design with intuitive controls. Familiarize yourself with the various components:



Image: Front view of the iKF King Wireless Active Noise Cancelling Headphones in black. This image highlights the overall design and form factor of the product.

Key Features:

- **Active Noise Cancelling (ANC):** Hybrid technology for up to 38dB noise reduction.

- **Powerful Bass:** 40mm drivers for high-res audio and rich bass.
- **Comfortable Design:** Protein leather and memory foam earcups for pressure-free wear.
- **Game Mode:** Ultra-low latency (0.038 seconds) for gaming.
- **Foldable Storage:** Compact design for easy portability.
- **Multi-Device Pairing:** Connects to two Bluetooth devices simultaneously.
- **Wireless/Wired Connection:** Bluetooth 5.3 and 3.5mm AUX support.
- **Extended Playtime:** Up to 100 hours (ANC OFF) on a single charge.

SPECIFICATIONS

Feature	Detail
Model Name	iKF-King
Noise Control	Active Noise Cancellation (up to 38dB)
Connectivity Technology	Wireless (Bluetooth 5.3), Wired (3.5 mm Jack)
Audio Driver Size	40 Millimeters
Frequency Response	20 Hz - 20 kHz
Impedance	32 Ohm
Battery Life	Up to 100 Hours (ANC OFF), 75 Hours (ANC ON)
Charging Time	Approximately 2 Hours
Bluetooth Range	10 Meters
Audio Latency (Game Mode)	38 Milliseconds
Material	Plastic, Protein Leather, Memory Foam
Item Weight	600 Grams (1.32 pounds)
Product Dimensions	8.31 x 7.36 x 3.58 inches

PRODUCT SIZE



Image: Product Size Diagram. This diagram provides precise measurements for the headphones, including width and height.

SETUP

1. Charging Your Headphones

Before first use, fully charge your iKF King headphones. Connect the provided USB-C charging cable to the charging port on the headphones and the other end to a USB power source (e.g., computer, wall adapter). The LED indicator will show charging status and turn off when fully charged.

A full charge provides up to 100 hours of playback with ANC off, or 75 hours with ANC on.

UP TO 100 HOURS

Meeting daily usage needs for several days After fully charged, 500mAh large capacity battery with USB-C port.

75_h
ANC OFF

100_h
ANC ON

500_{mAh}
Battery Capacity



2. Bluetooth Pairing

1. Ensure the headphones are charged and powered off.
2. Press and hold the Power button until the LED indicator flashes blue and red, indicating pairing mode.
3. On your device (smartphone, tablet, computer), enable Bluetooth and search for "iKF King" in the list of available devices.
4. Select "iKF King" to connect. Once connected, the LED indicator will turn solid blue or flash slowly.

3. Wired Connection (AUX)

The iKF King headphones can be used in wired mode, even if the battery is depleted. Connect one end of the provided 3.5mm AUX audio cable to the audio jack on the headphones and the other end to your audio source's 3.5mm port.

WIRELESS/ WIRED CONNECTION

Compatible with Android /Apple mobile phones, including computers, TVs, tablets and other electronic devices that can turn on Bluetooth, one headset can connect multiple devices. A 3.5mm audio cable is included for wired connection, keeping the music on even when the battery runs out.



Image: Wireless/Wired Connection. This image demonstrates how to connect the headphones using the included 3.5mm audio cable.

1. Power On/Off

- **Power On:** Press and hold the Power button for 2-3 seconds until the LED indicator lights up.
- **Power Off:** Press and hold the Power button for 3-4 seconds until the LED indicator turns off.

2. Active Noise Cancellation (ANC)

The iKF King headphones feature hybrid active noise cancellation to reduce ambient noise. Press the dedicated ANC button to toggle ANC on or off. The ANC function works in both wired and Bluetooth modes.

Note: ANC is most effective against low-frequency constant noises (e.g., airplane engines, traffic) and less effective against human voices or sudden, sharp sounds.

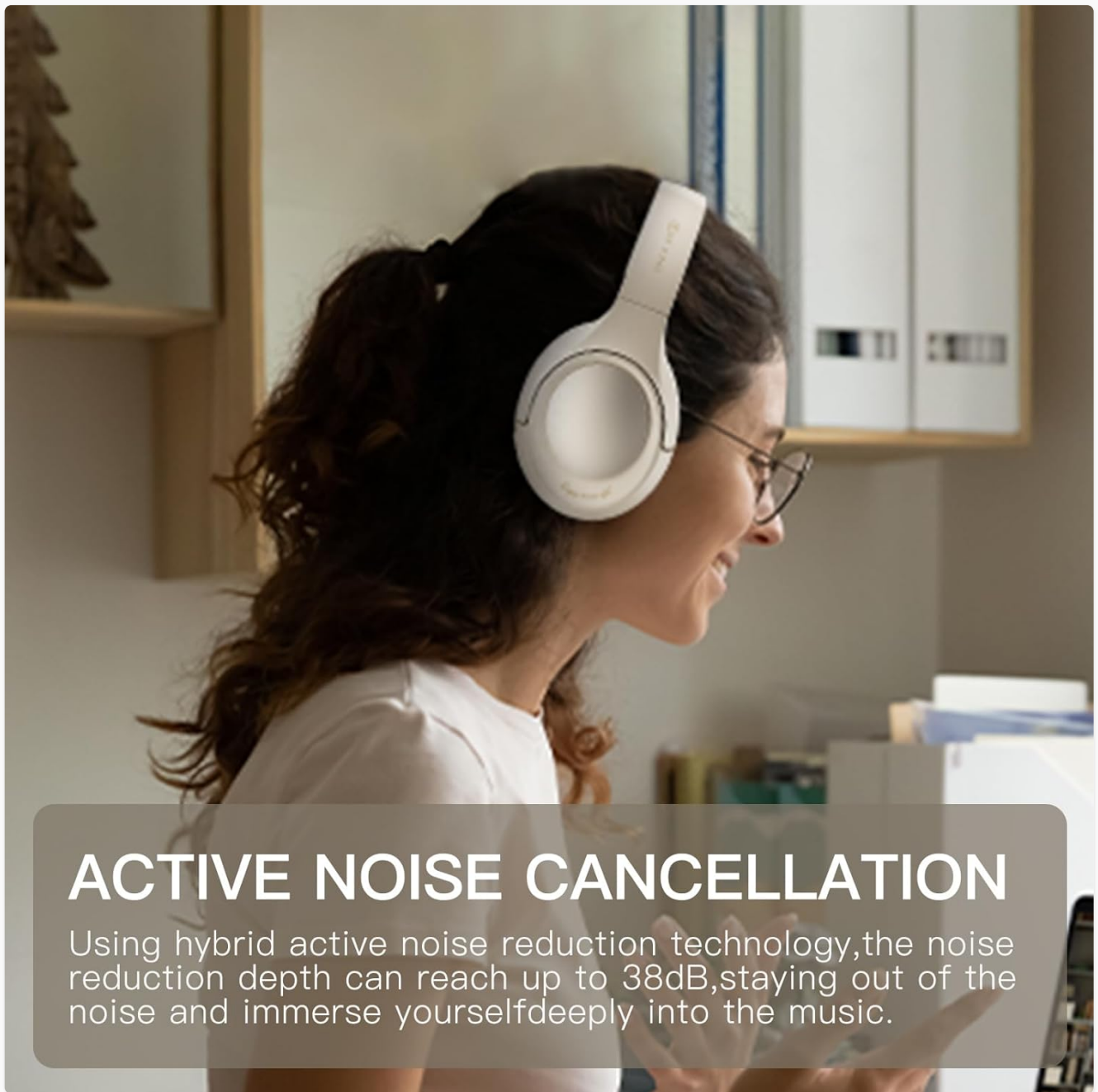


Image: Active Noise Cancellation in use. This image shows a user experiencing the noise-cancelling feature in a typical setting.

TURN UP THE ANC. TURN DOWN THE NOISE.



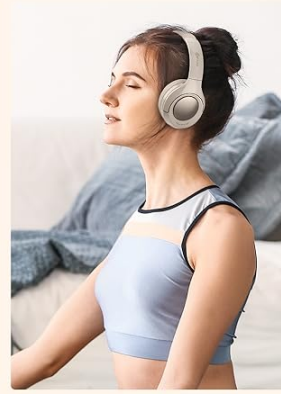
 Watch the Movie



 Doing Housework



 Learning



 Cardio

Image: ANC Use Cases. This image illustrates various activities where Active Noise Cancellation can enhance the user experience, such as watching movies, studying, or exercising.

3. Audio Playback and Calls

Use the control buttons on the earcup for media and call management:

- **Play/Pause:** Press the Multi-function button once.
- **Volume Up:** Press the Volume + button.
- **Volume Down:** Press the Volume - button.
- **Next Track:** Press and hold the Volume + button.
- **Previous Track:** Press and hold the Volume - button.
- **Answer/End Call:** Press the Multi-function button once.
- **Reject Call:** Press and hold the Multi-function button for 2 seconds.
- **Activate Voice Assistant:** Double-press the Multi-function button.

4. Game Mode (Ultra-Low Latency)

For an optimized gaming experience, activate Game Mode. This mode reduces audio latency to as low as 0.038 seconds, ensuring synchronized audio and visuals during gameplay. Refer to your headphones' specific button layout or companion app for Game Mode activation.

5. Multi-Device Connection

The iKF King headphones support simultaneous connection to two Bluetooth devices. This allows for seamless switching between, for example, your smartphone and a laptop without needing to re-pair.

PAIRING 2 DEVICES

Support connecting with two Bluetooth devices simultaneously. Easily switch between work and entertainment.



Image: Pairing 2 Devices. This image visually represents the ability to connect the headphones to multiple devices simultaneously.

MULTI-POINT CONNECTION

Get stable multi-points connections for convenient switch between your tablet, laptop, pc and smartphones.



Image: Multi-Point Connection. This image further emphasizes the stable multi-point connection feature for various devices.

COMFORT AND DESIGN

The iKF King headphones are designed for extended wear with maximum comfort.

- **Protein Leather + Memory Foam:** The earcups are crafted from soft protein leather and feature zero pressure-sensitive memory foam, ensuring a comfortable fit without pressure or stuffiness.
- **Adjustable Fit:** The telescopic arm and rotating head cover allow for fine-tuning to accommodate different head shapes and usage habits, enhancing overall comfort.

Protein leather + memory foam wear '0' pressure



Soft and comfortable
to care for your ears

Image: Protein Leather + Memory Foam Comfort. This image showcases the comfortable earcup material and the range of available colors.

PRESSURE-FREE COMFORT ALL

Comfortable all day, perfect fit, designed for long-term wear. The soft over ear cushions feature advanced venting, flexible fit for any head shape.



Image: Pressure-Free Comfort. This image highlights the soft, breathable materials designed for long-term wear.

FOLDABLE STORAGE

The iKF King headphones feature a foldable design, making them highly portable and easy to store when not in use or during travel.

FOLDABLE STORAGE

The headphone adopts a foldable design, which greatly increases the flexibility of storage and makes storage and carrying more convenient.



Image: Foldable Storage. This image demonstrates the folding mechanism for convenient storage and portability.

MAINTENANCE

To ensure the longevity and optimal performance of your iKF King headphones, follow these maintenance guidelines:

- **Cleaning:** Use a soft, dry, lint-free cloth to clean the surfaces of the headphones. Do not use abrasive cleaners, alcohol, or chemical solvents.
- **Earcup Care:** The protein leather earcups are durable but can be gently wiped with a slightly damp cloth if necessary. Ensure they are completely dry before use.
- **Storage:** When not in use, store the headphones in a cool, dry place, away from direct sunlight and extreme temperatures. Utilize the foldable design for compact storage.
- **Battery Care:** Avoid fully discharging the battery frequently. For long-term storage, charge the headphones to about 50% to preserve battery health.
- **Water Resistance:** The headphones are water-resistant, but not waterproof. Avoid submerging them in water or exposing them to heavy rain.

TROUBLESHOOTING

If you encounter any issues with your iKF King headphones, refer to the following common problems and solutions:

Problem	Solution
Headphones won't power on.	Ensure the headphones are fully charged. Connect to a power source and try again after a few minutes.
Cannot pair with Bluetooth device.	<ul style="list-style-type: none">◦ Ensure headphones are in pairing mode (flashing blue/red LED).◦ Turn off and on Bluetooth on your device.◦ Move headphones closer to your device.◦ Clear previous Bluetooth connections on your device.
No sound or low volume.	<ul style="list-style-type: none">◦ Adjust volume on both headphones and connected device.◦ Ensure headphones are properly connected (Bluetooth or AUX).◦ If using AUX, ensure the cable is fully inserted.
ANC is not effective.	<ul style="list-style-type: none">◦ Ensure ANC is toggled on.◦ ANC is designed for low-frequency noise; it may not eliminate all sounds.◦ Ensure earcups form a good seal around your ears.
Sound cuts out or disconnects frequently.	<ul style="list-style-type: none">◦ Ensure you are within the 10-meter Bluetooth range.◦ Avoid obstacles between headphones and device.◦ Reduce interference from other wireless devices.

WARRANTY AND SUPPORT

iKF King headphones come with a standard manufacturer's warranty. For specific warranty terms and conditions, please refer to the warranty card included with your product or visit the official iKF website. If you require technical support or have questions not covered in this manual, please contact iKF customer service through their official channels.

For additional support and product information, you may visit the [iKF Official Store on Amazon](#).

