

## KIMILAR TTYZJ1209

# KIMILAR 2024 Anti-Theft Video Doorbell Mount Instruction Manual

## INTRODUCTION

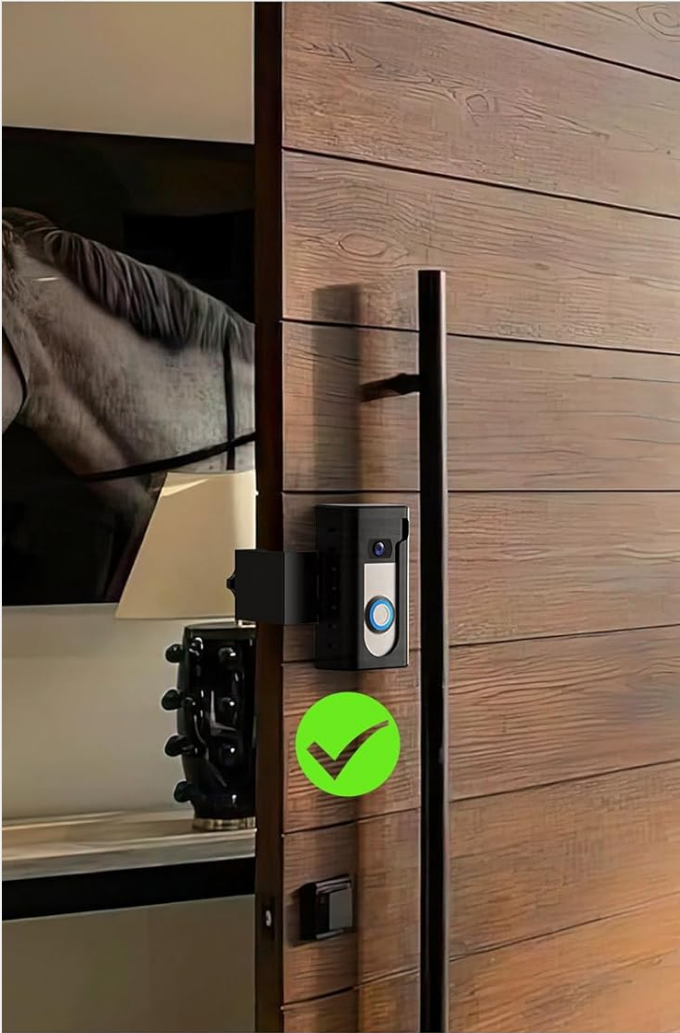
This manual provides comprehensive instructions for the installation and use of your KIMILAR 2024 Anti-Theft Video Doorbell Mount. This product is designed to securely hold your video doorbell on inward-opening doors without requiring drilling, offering enhanced security and convenience for various settings including homes, rentals, and offices.

## PACKAGE CONTENTS

- 1 x Anti-Theft Video Doorbell Mount Shell
- 1 x Adjustable Mounting Bracket
- 1 x Handle Screw
- 1 x Alloy Gasket
- 1 x Screwdriver
- 4 x Screws
- 1 x Pad (for doorbell cushioning)
- 1 x Installation Guide

# Not for Security Door

## Unsuitable for Doors with Uneven Edges



Inward Door Open Left/Right



Unsuitable for Doors with Uneven Edges

Image: All components included in the KIMILAR Anti-Theft Video Doorbell Mount package.

### COMPATIBILITY

#### Compatible Doorbells:

The mount is compatible with most video doorbells, including Video Doorbell /2 /3 /3 Plus /4 /(2020 Release)/ Battery Doorbell Plus. It is **not compatible** with Video Doorbell Pro/Pro 2 and Blink 2025 version.

The maximum size of the doorbell that can be placed inside the mount is 2.55 inches Wide x 5.11 inches High x 1.14 inches Depth.

# Compatible With Most Video Doorbells

## Maximum size of Video Doorbell:

2.55inch Wide X 5.11inch

Tall X 1.14inch Thick



## Applicable Model

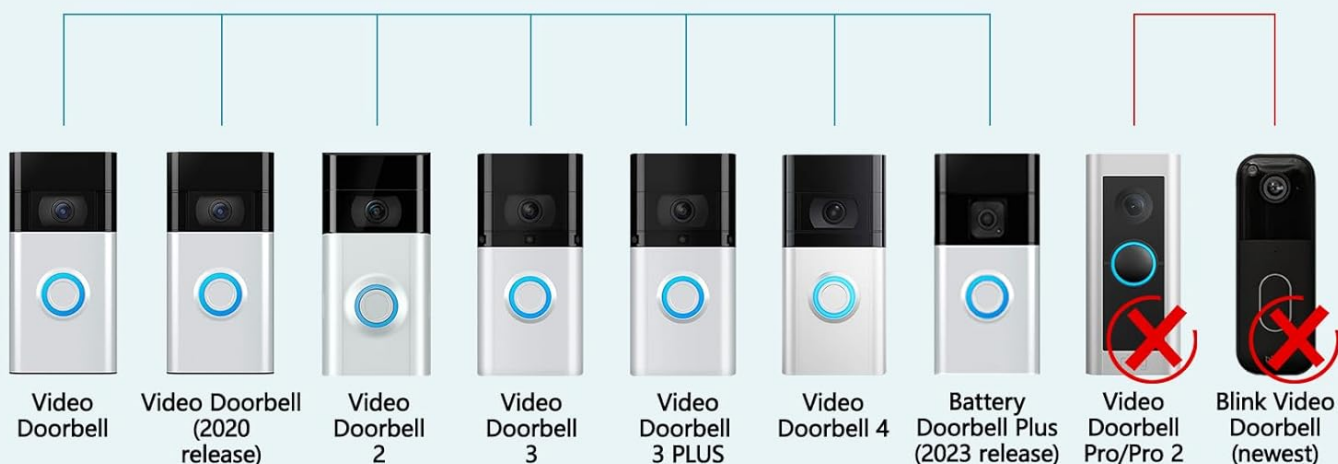


Image: Visual guide to compatible video doorbell models and size limitations.

## Compatible Doors:

- Suitable for most inward-opening doors.
- Door thickness must be between 0.59 inches and 2.36 inches.
- Door gap width must be more than 0.06 inches.
- The edge of the door must be flat.
- **Not suitable for security doors or doors with uneven edges.**

# What Kinds of Door Can Be Used

Applicable door thickness: 0.59inch-2.36inch

Door gap width > 0.06inch

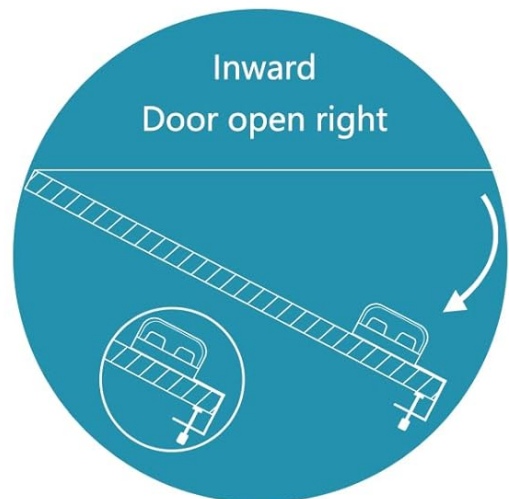
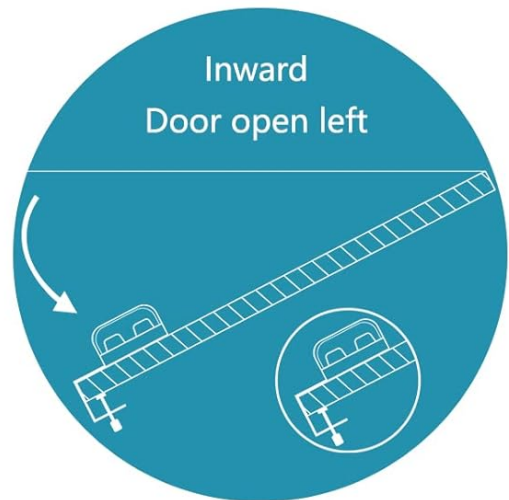
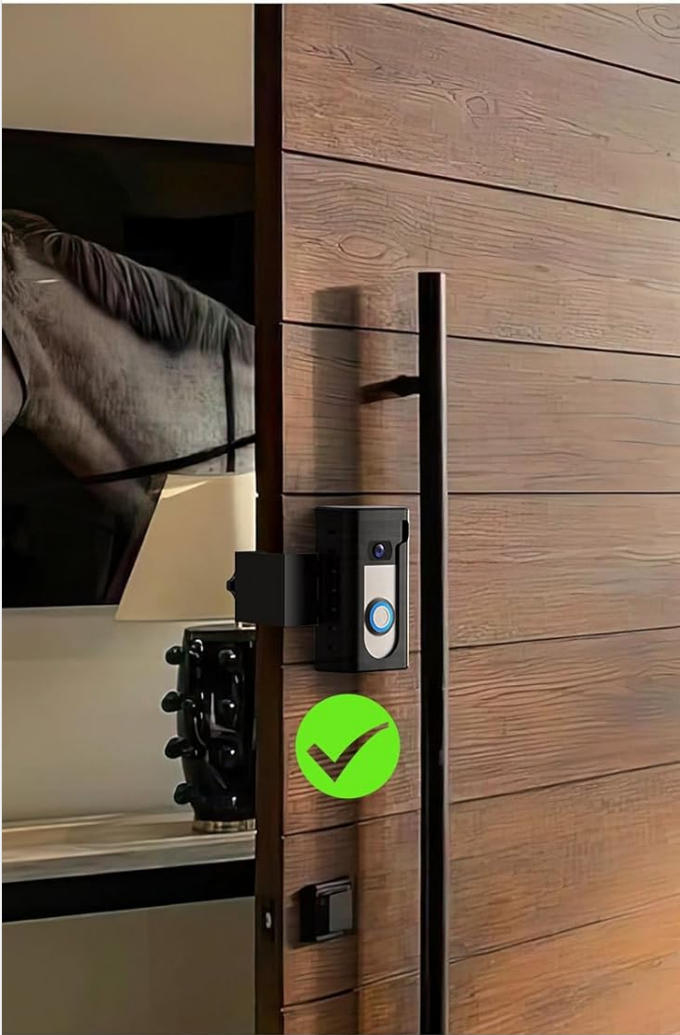


Image: Illustrations detailing door thickness and gap width for proper installation.



# Not for Security Door

## Unsuitable for Doors with Uneven Edges



Inward Door Open Left/Right



Unsuitable for Doors with Uneven Edges

Image: Examples of doors that are compatible and incompatible with the mount.

## SETUP AND INSTALLATION

Follow these steps to install your KIMILAR Anti-Theft Video Doorbell Mount. No drilling is required.

### Installation Video Guide:

Your browser does not support the video tag.

Video: Official installation guide for the KIMILAR Anti-Theft Video Doorbell Mount, demonstrating each step.

1. **Prepare the Mount Shell:** If your doorbell is loose inside the shell, cut the provided pad into small pieces and glue them onto the back cover of the mount to ensure a snug fit.

## Not for Security Door

### Unsuitable for Doors with Uneven Edges



Inward Door Open Left/Right



Unsuitable for Doors with Uneven Edges

Image: Visual steps for preparing the mount and inserting the doorbell.

2. **Insert the Video Doorbell:** Place your video doorbell into the mount shell. Ensure it fits securely.
3. **Secure the Back Cover:** Align the two ends of the connector on the back cover and snap-lock them together. Use the provided screws and screwdriver to fix the security screw at the bottom of the shell. Ensure the doorbell is securely fastened.
4. **Attach the Mounting Bracket:** Insert the metal bracket into the back of the doorbell shell.
5. **Mount on the Door:** Position the assembled mount on the edge of your inward-opening door.
6. **Adjust and Secure:** Install the M5\*50 thumb screw and alloy gasket. Adjust the handle screw to secure the doorbell mount firmly to the door. Do not overtighten the screws, as this may prevent the door from closing normally.

# Can be Adjusted Left and Right

The distance to door edge can be adjusted

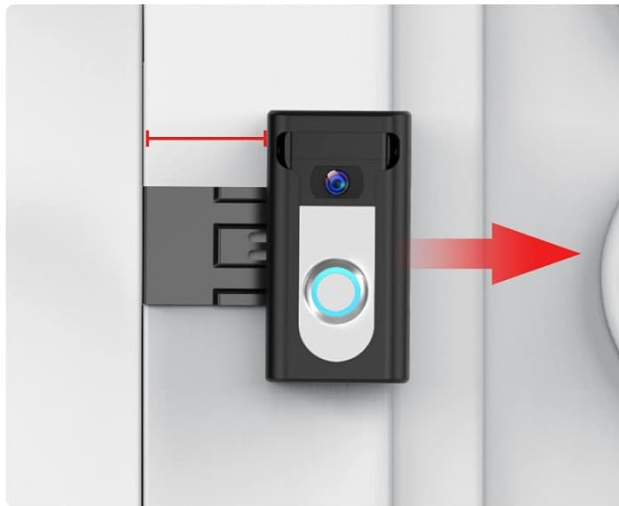


Image: Illustration of the adjustable feature for optimal positioning on the door.

## FEATURES AND BENEFITS

- **Anti-Theft Design:** The updated 2024 design provides full protection for your doorbell, making it difficult to remove without authorization.
- **No Motion Sensor Blockage:** Features a T-shaped opening design that ensures the doorbell's motion sensor remains unobstructed.
- **No-Drill Installation:** Ideal for renters or those who prefer not to drill holes, preserving the integrity of your door.
- **Adjustable Fit:** The mount can be adjusted to fit various door thicknesses and positions, ensuring optimal camera view.

# Not Block Doorbell Motion Sensor



T-shaped Opening Design  
Not block doorbell motion sensor



All Around Protection



NO Drilling Needed



Anti-Theft

Image: Key features of the mount, including anti-theft and unobstructed sensor design.

## MAINTENANCE

To ensure the longevity and optimal performance of your doorbell mount, regular maintenance is recommended:

- **Cleaning:** Wipe the mount periodically with a soft, damp cloth to remove dust and grime. Avoid abrasive cleaners.
- **Check Tightness:** Periodically check the handle screw to ensure it remains securely tightened. Adjust if necessary to maintain stability.
- **Inspect for Wear:** Examine the mount for any signs of wear or damage. If any components are compromised, contact customer support for assistance.

## TROUBLESHOOTING

Problem	Possible Cause	Solution
---------	----------------	----------



Problem	Possible Cause	Solution
Door does not close properly after installation.	The handle screw is overtightened, or the door gap is too small.	Loosen the handle screw slightly. Ensure your door gap is greater than 0.06 inches before installation.
Doorbell is loose inside the mount.	Insufficient padding for the doorbell.	Use the provided pads (cut into smaller pieces if needed) to create a snug fit for your doorbell inside the shell.
Mount feels unstable on the door.	Handle screw is not tightened enough, or door edges are uneven.	Tighten the handle screw until the mount is firm. This mount is not suitable for doors with uneven edges.
Motion sensor is blocked.	Doorbell is not correctly positioned within the T-shaped opening.	Ensure the doorbell's sensor area aligns with the T-shaped opening of the mount.

## SPECIFICATIONS

- **Model Name:** KIMILAR
- **Item Model Number:** TTYZJ1209
- **Color:** Black
- **Mounting Type:** Door Mount (No-Drill)
- **Compatible Door Thickness:** 0.59 - 2.36 inches
- **Minimum Door Gap Width:** > 0.06 inches
- **Max Doorbell Dimensions:** 2.55" (W) x 5.11" (H) x 1.14" (D)
- **Material:** Not specified (typically durable plastic/metal)
- **Item Weight:** 10.8 ounces (0.31 Kilograms)
- **Package Dimensions:** 13.86 x 5.43 x 3.23 inches

## WARRANTY AND SUPPORT

For any problems or inquiries regarding your KIMILAR Anti-Theft Video Doorbell Mount, please contact us via the "Contact Seller" entrance on Amazon. We are committed to providing customer satisfaction.

**Manufacturer:** KIMILAR

**Date First Available:** December 12, 2022



© 2024 KIMILAR. All rights reserved.