

## ANGENIL 1 inch Argan Oil Flat Iron Pink

# ANGENIL Ceramic Flat Iron Hair Straightener User Manual

Model: 1 inch Argan Oil Flat Iron Pink

## 1. INTRODUCTION

Thank you for choosing the ANGENIL Ceramic Flat Iron Hair Straightener. This 2-in-1 professional hair iron is designed to provide both straightening and curling capabilities, delivering shinier and smoother hair with advanced ceramic tourmaline plates. Please read this manual thoroughly before use to ensure safe and optimal performance.

## 2. IMPORTANT SAFETY INFORMATION

**WARNING: To reduce the risk of burns, electrocution, fire, or injury to persons:**

- Do not use while bathing or in a shower.
- Do not place or store appliance where it can fall or be pulled into a tub or sink.
- Do not place in or drop into water or other liquid.
- Do not reach for an appliance that has fallen into water. Unplug immediately.
- Always unplug this appliance immediately after using.
- Unplug this appliance before cleaning.
- Do not use with a voltage converter.
- Keep away from children.
- Do not use if the cord is damaged.
- Allow the appliance to cool completely before storing.

## 3. PRODUCT OVERVIEW

The ANGENIL Ceramic Flat Iron features advanced technology for efficient and safe hair styling.





Image 3.1: The ANGENIL Ceramic Flat Iron, showing the pink straightener, its packaging box, two hair clips, a heat-resistant glove, and a small cleaning cloth.

## Key Components:

- **Ceramic Tourmaline Floating Plates:** Enriched with argan oil for smooth gliding and frizz-free finish.
- **LCD Display:** Shows current temperature clearly.
- **Temperature Control Buttons (+/-):** Adjust heat settings.
- **Power Button:** On/Off control.
- **Safety Lock Design:** For secure storage.
- **360° Swivel Cord:** Prevents tangling during use.

# Multiple Temp Settings

Provides precise temperature control for all hair types

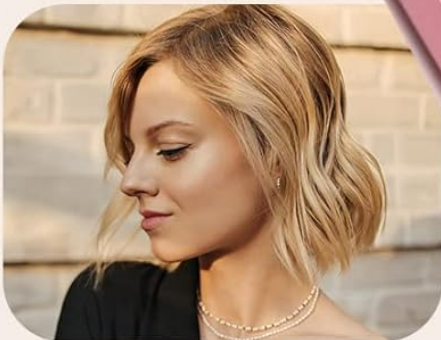


Image 3.2: A detailed diagram highlighting the 3D Floating Design, Tourmaline Ceramic plates, LCD Display, Safety Lock Design, Power Buttons, and 360° Swivel Cord of the ANGENIL flat iron.

## 4. SETUP

---

1. **Unpack:** Carefully remove the flat iron and all accessories from the packaging. Ensure all components listed in Section 3 are present.
2. **Inspect:** Check the appliance and power cord for any signs of damage. Do not use if damaged.
3. **Plug In:** Insert the power plug into a suitable electrical outlet. The appliance supports dual voltage (110V-240V) for worldwide use.

## 5. OPERATING INSTRUCTIONS

---

### 5.1 Powering On and Temperature Setting

1. Press and hold the Power Button to turn on the flat iron. The LCD display will illuminate.
2. Use the Temperature Control Buttons (+/-) to select your desired heat setting. The temperature range is 310°F to 450°F.
3. Allow the flat iron to heat up. It reaches operating temperature in approximately 10-15 seconds.



# Tourmaline Ceramic Flat Iron

For shiny, silky, naturally straight hair

Image 5.1: A close-up of the ANGENIL flat iron's LCD display showing the temperature setting, indicating its readiness for use.

## 5.2 Hair Straightening

1. Ensure hair is clean, dry, and tangle-free. For best results, apply a heat protectant spray.
2. Divide hair into small, manageable sections.
3. Take one section of hair and place it between the heating plates, close to the roots.

4. Gently close the plates and glide the flat iron slowly down the hair section from root to tip. Do not hold the iron in one place for too long to avoid damage.
5. Repeat for all sections until desired straightness is achieved.

### **5.3 Hair Curling**

The rounded design of the ANGENIL flat iron allows for easy curling.

1. Ensure hair is clean, dry, and tangle-free.
2. Take a section of hair and clamp it between the plates at the desired height where the curl should begin.
3. Rotate the flat iron 180 degrees away from your face, then slowly pull it down through the hair section, maintaining the rotation.
4. Release the hair and allow the curl to cool and set.
5. Repeat for all sections. For softer waves, gently brush through the curls once cooled.



Image 5.2: A woman holding the ANGENIL flat iron, demonstrating its ergonomic design and ease of use for styling hair.

#### **5.4 Auto-Off Feature**

For safety, the ANGENIL flat iron will automatically shut off after 60 minutes of continuous use. To resume use, simply turn the appliance off and then on again.

## **6. MAINTENANCE**

## 6.1 Cleaning

1. Always unplug the flat iron from the power outlet and allow it to cool completely before cleaning.
2. Wipe the exterior surfaces and heating plates with a soft, damp cloth. For stubborn residue, use a small amount of mild soap.
3. Do not use abrasive cleaners or harsh chemicals, as these can damage the ceramic coating.
4. Ensure the appliance is completely dry before storing or next use.

## 6.2 Storage

When not in use, store the flat iron in a cool, dry place. Use the safety lock design to keep the plates closed for compact storage. Do not wrap the power cord tightly around the appliance, as this can damage the cord.

## 7. TROUBLESHOOTING

Problem	Possible Cause	Solution
Appliance does not turn on.	Not plugged in; power outlet issue; appliance malfunction.	Ensure plug is fully inserted. Test outlet with another device. If still not working, contact customer support.
Does not heat up.	Power issue; internal fault.	Check power connection. If appliance turns on but doesn't heat, contact customer support.
Hair gets pulled or snagged.	Hair not properly detangled; plates not closing correctly; hair section too large.	Ensure hair is fully detangled. Use smaller sections. Check for debris on plates.
Auto-off activates too soon.	Normal operation (60-minute auto-off).	This is a safety feature. Turn the appliance off and then on again to reset.

## 8. SPECIFICATIONS

Feature	Detail
Model	1 inch Argan Oil Flat Iron Pink
Plate Material	Ceramic Tourmaline (Argan Oil Infused)
Plate Size	1 inch
Temperature Range	310°F - 450°F (154°C - 232°C)
Heating Time	Approx. 10-15 seconds
Display	LCD Digital Display
Voltage	Dual Voltage (110V-240V)
Auto Shut-off	60 minutes

Feature	Detail
Cord Type	360° Swivel Cord



Image 8.1: Diagram illustrating the dimensions of the ANGENIL flat iron, including its length (10.5 inches / 26 cm) and plate width (1 inch).

## 9. WARRANTY AND SUPPORT

---

For warranty information and customer support, please refer to the warranty card included with your product or visit the official ANGENIL website. If you encounter any issues not covered in this manual, please contact ANGENIL customer service for assistance.

**ANGENIL Customer Service:** Please refer to the contact information provided on the product packaging or the official brand website.