

APEXEL AP-TM6-JP

APEXEL 100mm Macro Lens for Smartphones

Instruction Manual

1. INTRODUCTION

The APEXEL 100mm Macro Lens is a specialized accessory designed for smartphone photography, enabling users to capture intricate details of small objects with enhanced magnification. This lens transforms your smartphone into a powerful tool for close-up photography, ideal for subjects such as flowers, insects, and textures.

The lens is constructed with a durable aluminum alloy shell and high-quality 5-piece coated glass lenses, featuring 3-5 layers of coating on each lens to improve light transmission and reduce reflection. This design ensures high-definition vision without vignetting, distortion, or dark areas, improving color reproduction. A key feature of this macro lens is its optimal working distance of 4-7 cm from the subject. This specific range is crucial for achieving clear focus and detailed magnification. The kit also includes a CPL (Circular Polarizer) filter, which can be directly attached to the lens via a 37mm screw thread. This filter helps to reduce unwanted reflections and enhance color saturation, resulting in sharper images.

2. PACKAGE CONTENTS

Please verify that all items are present in your package:

- APEXEL 100mm Macro Lens
- Universal Phone Clip
- CPL Filter (pre-attached to lens)
- Lens Cleaning Cloth
- User Manual
- Protective Carrying Case

AWESOME BOKEH EFFECT

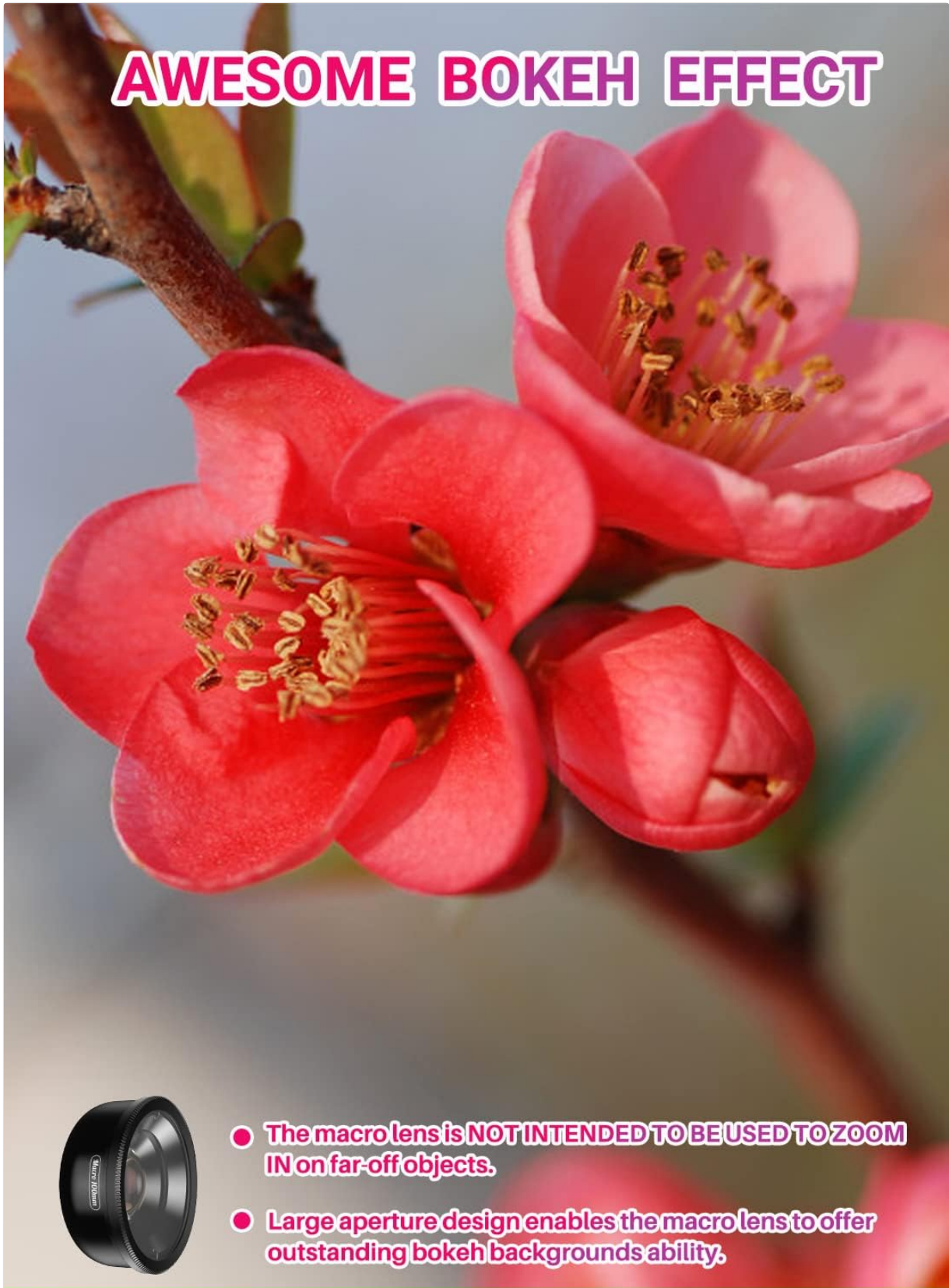


Image: Contents of the APEXEL 100mm Macro Lens kit.

3. SETUP INSTRUCTIONS

1. **Attach the Universal Phone Clip:** Gently expand the universal phone clip and secure it onto your smartphone. Ensure the clip's opening aligns with your phone's primary camera lens. The clip is designed to accommodate phone widths between 66mm and 95mm.
2. **Mount the Macro Lens:** Screw the APEXEL 100mm Macro Lens onto the 17mm threaded port on the phone clip. Ensure it is securely fastened but do not overtighten.

3. **Align the Lens:** Carefully slide the clip horizontally until the macro lens is perfectly centered over your smartphone's camera lens. Verify alignment by opening your phone's camera app and checking for any vignetting (dark corners) or obstructions.
4. **Optional CPL Filter:** The CPL filter comes pre-attached to the macro lens. If you wish to remove or reattach it, simply unscrew or screw it onto the 37mm thread of the macro lens.
5. **Tripod and Accessory Mounts:** The phone clip features a 1/4-inch screw hole at the bottom for mounting onto a tripod or monopod. It also includes a cold shoe mount for attaching external accessories like LED lights or microphones.

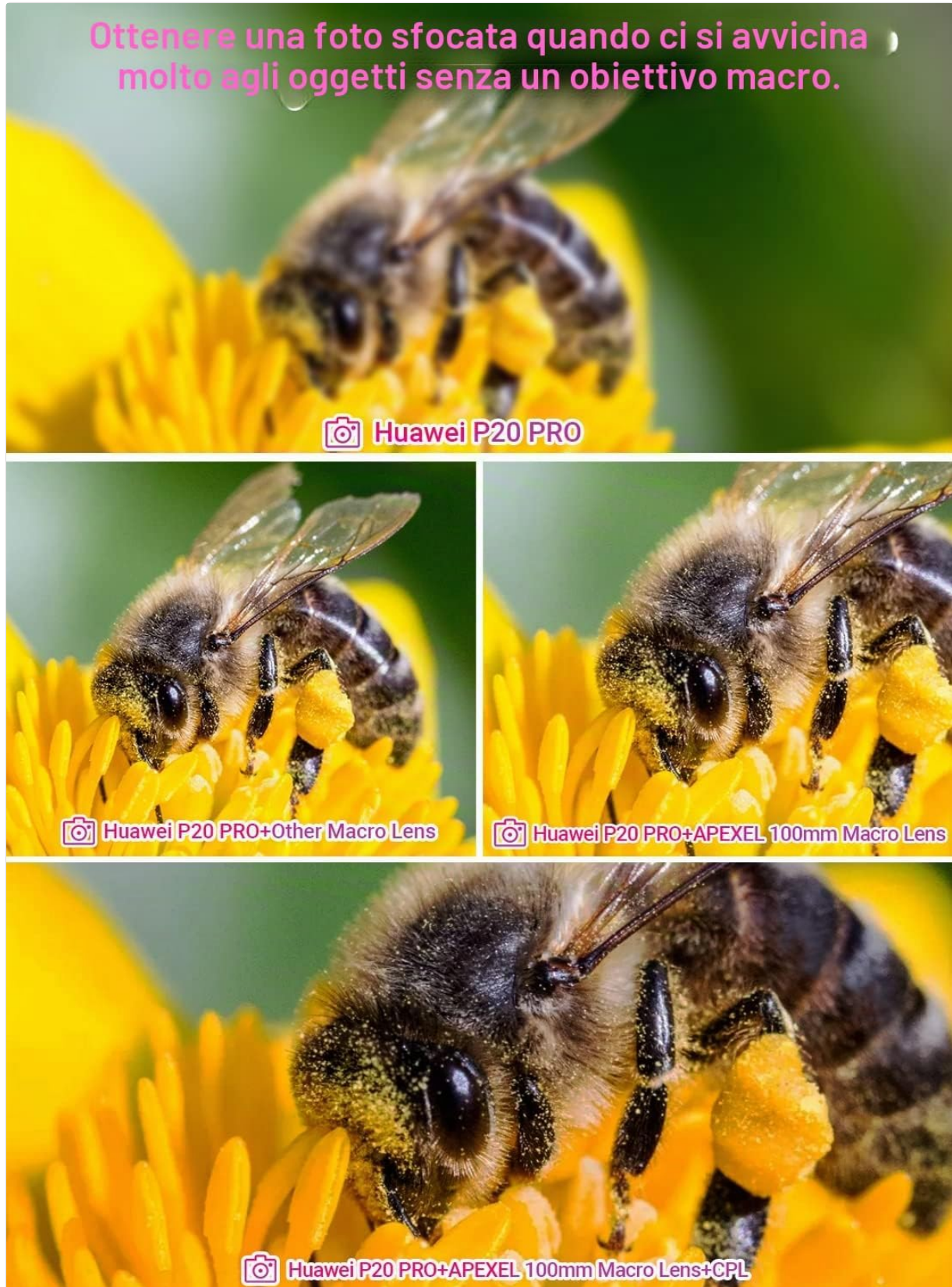


Image: Multi-function phone clip with dimensions and features.



Image: Close-up of the phone clip's mounting options.

4. OPERATING INSTRUCTIONS

1. **Optimal Working Distance:** The APEXEL 100mm Macro Lens has a fixed focus. To achieve sharp images, position your smartphone camera between 4 cm and 7 cm from your subject. Adjust your distance to the subject until it appears in clear focus on your phone screen.
2. **Using the CPL Filter:** The CPL filter is designed to reduce glare from reflective surfaces (like water, glass, or polished metals) and enhance color saturation. Rotate the outer ring of the CPL filter while observing your phone screen to achieve the desired effect.
3. **Composition:** Due to the shallow depth of field inherent in macro photography, careful composition is essential. Experiment with different angles and lighting to highlight your subject.
4. **Stability:** For the sharpest results, especially in lower light conditions, consider using a tripod with the 1/4-inch mount on the phone clip.
5. **Note on Zoom:** This macro lens is designed for close-up magnification and is not intended for zooming in on distant objects. Digital zoom on your smartphone should be avoided as it can degrade image quality.

**Scopri la straordinaria
bellezza degli oggetti minuscoli.**

Il nostro obiettivo macro APEXEL



Il telefono utilizzato per le riprese è iPhone X



Image: Demonstrating the 4-7cm working distance for macro photography.

SOLO lente macro 10X

Ingrandimento ottico nitido, senza distorsioni

Ma le foto risulteranno sovraesposte in luminosità

Scattata con iPhone 12 + lente macro 10X



Con lente macro 10X + filtro CPL

Ingrandimento ottico nitido, senza distorsioni

Elimina la luce riflessa, aumenta la nitidezza dell'immagine e la saturazione del colore.

Scattata con iPhone 12 + lente macro 10X + filtro CPL



EFFETTO ECCEZIONALE

Viene fornito con un filtro CPL, eccellente per ridurre i riflessi da superfici non metalliche e migliorare la saturazione del colore. Come gioielli, vetro o acqua.

Ottieni fotografie più nitide.



Image: Effect of the CPL filter on reflections and clarity.

5. MAINTENANCE

- **Cleaning the Lens:** Use the provided microfiber cleaning cloth to gently wipe the lens surfaces. For stubborn smudges, a small amount of lens cleaning solution can be applied to the cloth (not directly to the lens). Avoid using abrasive materials or harsh chemicals.
- **Storage:** When not in use, store the macro lens and clip in the protective carrying case to prevent dust accumulation and scratches.

- **Handling:** Avoid touching the lens glass directly with your fingers to prevent smudges and oils.

6. TROUBLESHOOTING

- **Images are blurry or out of focus:**
 - Ensure the lens is properly aligned with your smartphone's camera.
 - Adjust the distance between the lens and your subject. The optimal working distance is 4-7 cm. Moving too close or too far will result in blurry images.
 - Ensure your phone's camera is set to its native magnification (no digital zoom).
- **Dark corners (vignetting) appear in photos:**
 - Re-align the macro lens precisely over your smartphone's camera lens.
 - Ensure the phone clip is securely attached and not obstructing the lens.
- **Reflections or glare in photos:**
 - Rotate the CPL filter to minimize reflections.
 - Adjust your lighting or shooting angle to reduce direct light sources causing glare.

7. SPECIFICATIONS

Brand	APEXEL
Model Name	AP-TM6-JP
Lens Type	Macro
Focal Length	100 millimeters
Focus Type	Fixed Focus
Lens Coating	HD Coating
Zoom Ratio	1:1
Image Stabilization	Optical
Maximum Aperture	1.5 f
Minimum Aperture	1.5 f
Number of Diaphragm Blades	9
Photo Filter Size	37 Millimeters
Lens Mount	M42
Compatible Mounts	iPhone, Samsung Galaxy, OnePlus, Huawei (via universal clip)

8. WARRANTY AND SUPPORT

APEXEL provides professional after-sales service and offers a 1-year return service for this product. If you

encounter any issues or have questions, please contact us at any time via Amazon Mail. We are committed to providing a response within 24 hours.

© 2024 APEXEL. All rights reserved.