

## Logitech 910-006863

# Logitech M170 Wireless Mouse User Manual

Model: M170 (910-006863) | Brand: Logitech

## INTRODUCTION

The Logitech M170 Wireless Mouse offers a reliable and hassle-free connection for various computing environments. Designed for comfort and mobility, this ambidextrous mouse provides smooth and accurate cursor control. It boasts a long battery life and broad compatibility across multiple operating systems.



*Figure 1: Logitech M170 Wireless Mouse, Blue Grey.*

Follow these steps to set up your Logitech M170 Wireless Mouse:

1. **Install Battery:** The mouse requires one AA battery, which is included. Open the battery compartment located on the underside of the mouse. Insert the AA battery, ensuring correct polarity.



*Figure 2: Underside of the mouse with battery compartment.*

2. **Locate USB Mini Receiver:** The USB mini receiver is typically stored inside the battery compartment of the mouse for convenience during transport. Carefully remove it.
3. **Connect to Computer:** Plug the USB mini receiver into an available USB port on your computer (PC or Mac). The mouse is designed for plug-and-play connection, typically connecting within 3 seconds.

# PLUG AND PLAY WIRELESS



*Figure 3: Plug-and-play wireless connection.*

4. **Power On:** Locate the On/Off switch on the underside of the mouse and slide it to the "On" position.

# STRONG AND RELIABLE WIRELESS



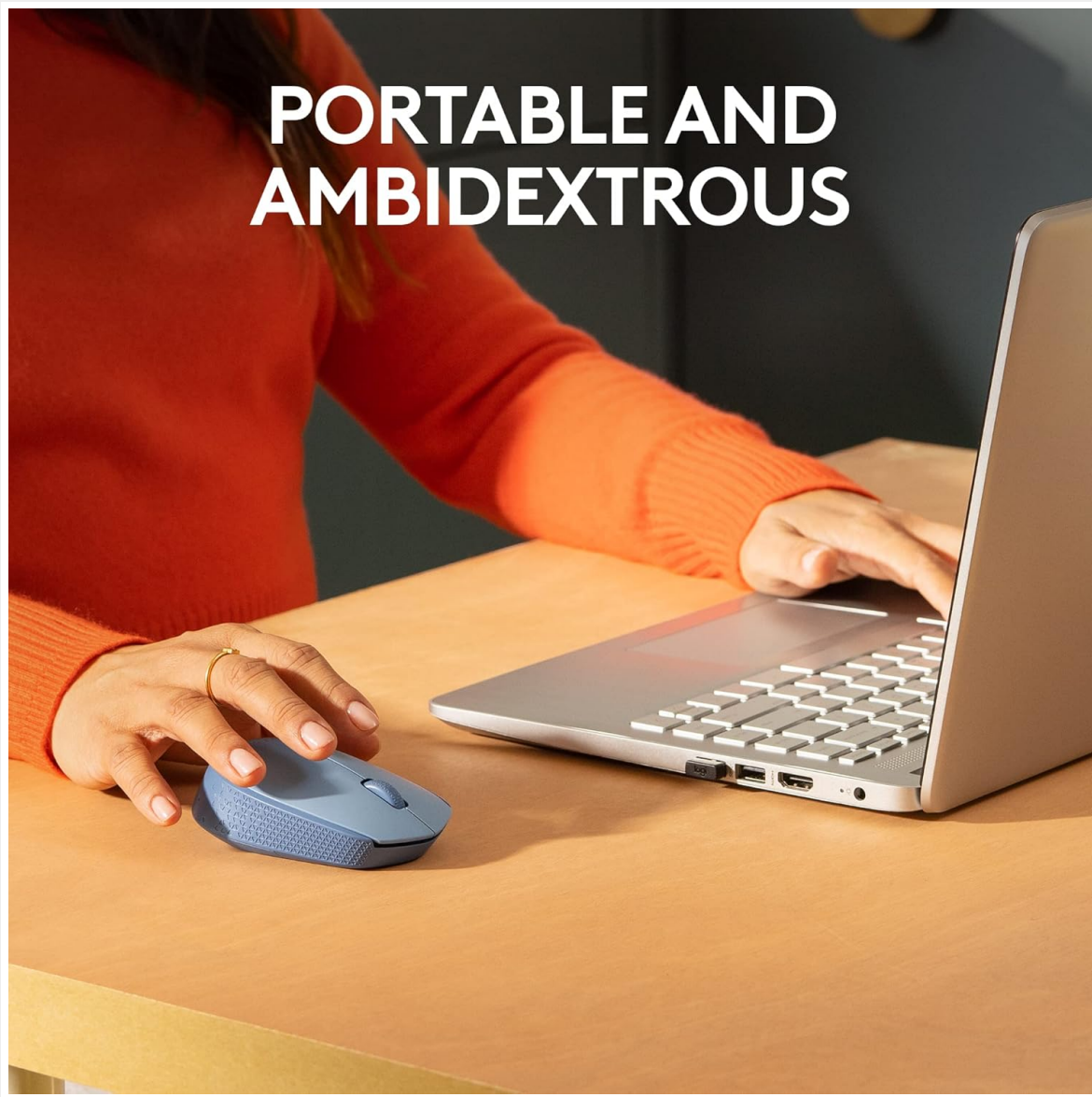
*Figure 4: Strong and reliable wireless connection.*

## OPERATING INSTRUCTIONS

---

The Logitech M170 mouse is designed for intuitive use and broad compatibility.

- **Comfortable Design:** The mouse features a comfortable, mobile, and ambidextrous design, suitable for both left and right-handed users. Its compact size makes it easy to carry.

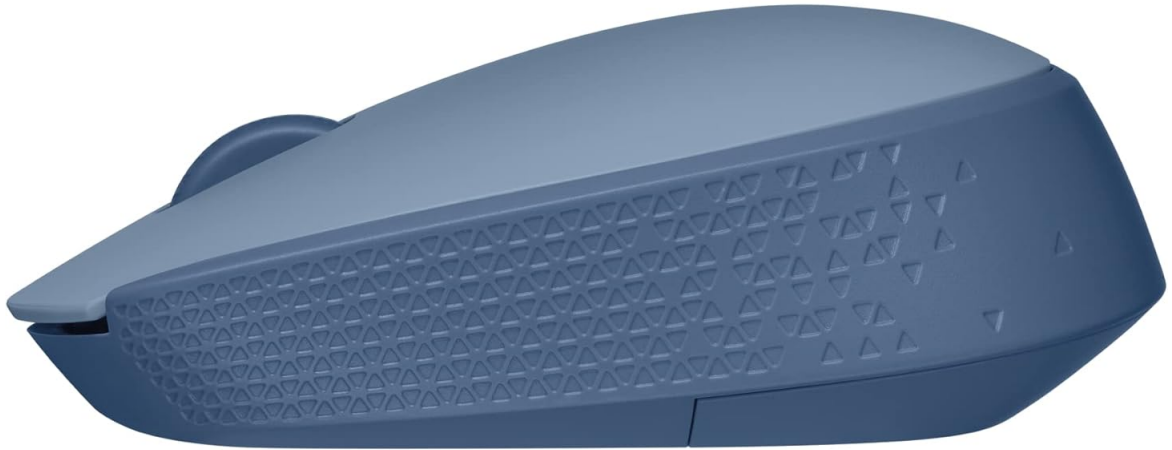


*Figure 5: Portable and ambidextrous design.*

- **Smooth Navigation:** Benefit from controlled line-by-line scrolling and optical tracking for smooth and accurate cursor control on almost any surface.
- **Wireless Range:** The reliable 2.4 GHz wireless connection allows the mouse to work up to 33 feet (10 meters) away from your computer.
- **Multi-Platform Compatibility:** The M170 mouse is compatible with a wide range of operating systems, including Windows, macOS, Linux, Chrome OS, iPadOS, and Android.



# MULTI-PLATFORM COMPATIBILITY



*Figure 6: Multi-platform compatibility.*

## MAINTENANCE

- **Battery Replacement:** The mouse features a 12-month battery life and an auto-sleep function to conserve power. When the mouse performance degrades, replace the AA battery.

# LONG-LASTING QUALITY



*Figure 7: Long-lasting quality.*

- **Cleaning:** To clean your mouse, gently wipe the surface with a soft, damp cloth. Avoid using harsh chemicals or abrasive materials. Ensure no liquid enters the internal components.

## TROUBLESHOOTING

If you encounter issues with your Logitech M170 mouse, try the following solutions:

- **No Cursor Movement:**
  - Ensure the mouse is powered on using the On/Off switch on the underside.
  - Check the battery. If the battery is low or depleted, replace it with a fresh AA battery.
  - Verify the USB mini receiver is securely plugged into a working USB port on your computer. Try a different USB port if available.
  - Move the mouse closer to the USB receiver to ensure it is within the 10-meter wireless range.
- **Intermittent Connection:**
  - Reduce interference by moving other wireless devices away from the mouse and receiver.
  - Ensure there are no large metal objects between the mouse and the receiver.
  - Try re-pairing the mouse with the receiver if your system supports it (refer to Logitech support for



specific instructions if needed).

- **Buttons or Scroll Wheel Not Responding:**
  - Clean any debris around the buttons or scroll wheel.
  - Restart your computer.

**SPECIFICATIONS**

| Feature                  | Detail   |
|--------------------------|--|
| Brand                    | Logitech   |
| Model                    | M170 (910-006863)                                    |
| Connectivity Technology  | Wireless (2.4 GHz with USB Mini Receiver)            |
| Movement Detection       | Optical Tracking                                     |
| Number of Buttons        | 2 (Left/Right Click) + Scroll Wheel                  |
| Ergonomic Fit            | Symmetrical / Ambidextrous                           |
| Wireless Range           | Up to 33 ft / 10 m                                   |
| Battery Type             | 1 x AA Battery (included)                            |
| Battery Life             | Up to 12 months (may vary based on usage)            |
| Operating Systems        | Windows, macOS, Linux, Chrome OS, iPadOS, Android    |
| Dimensions (LxWxH)       | 3.8 x 2.4 x 1.4 inches (97.7 x 61.5 x 35.2 mm)       |
| Weight (with battery)    | 2.49 ounces (79.5 g)                                 |
| Recycled Plastic Content | Minimum 38% for Rose and Blue Grey (varies by color) |
| Carbon Footprint         | 4.05 kg CO2e   |

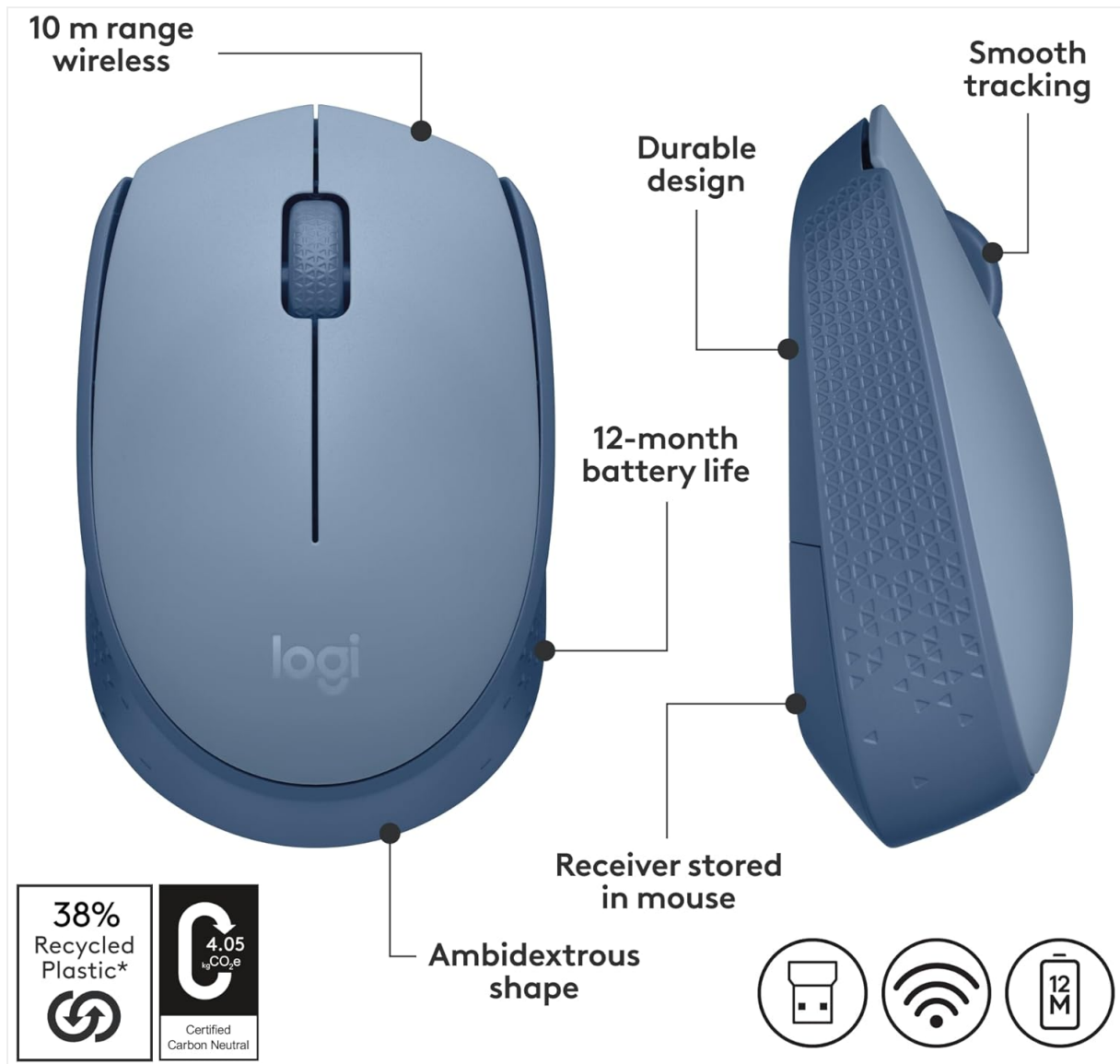


Figure 8: Key features and specifications.

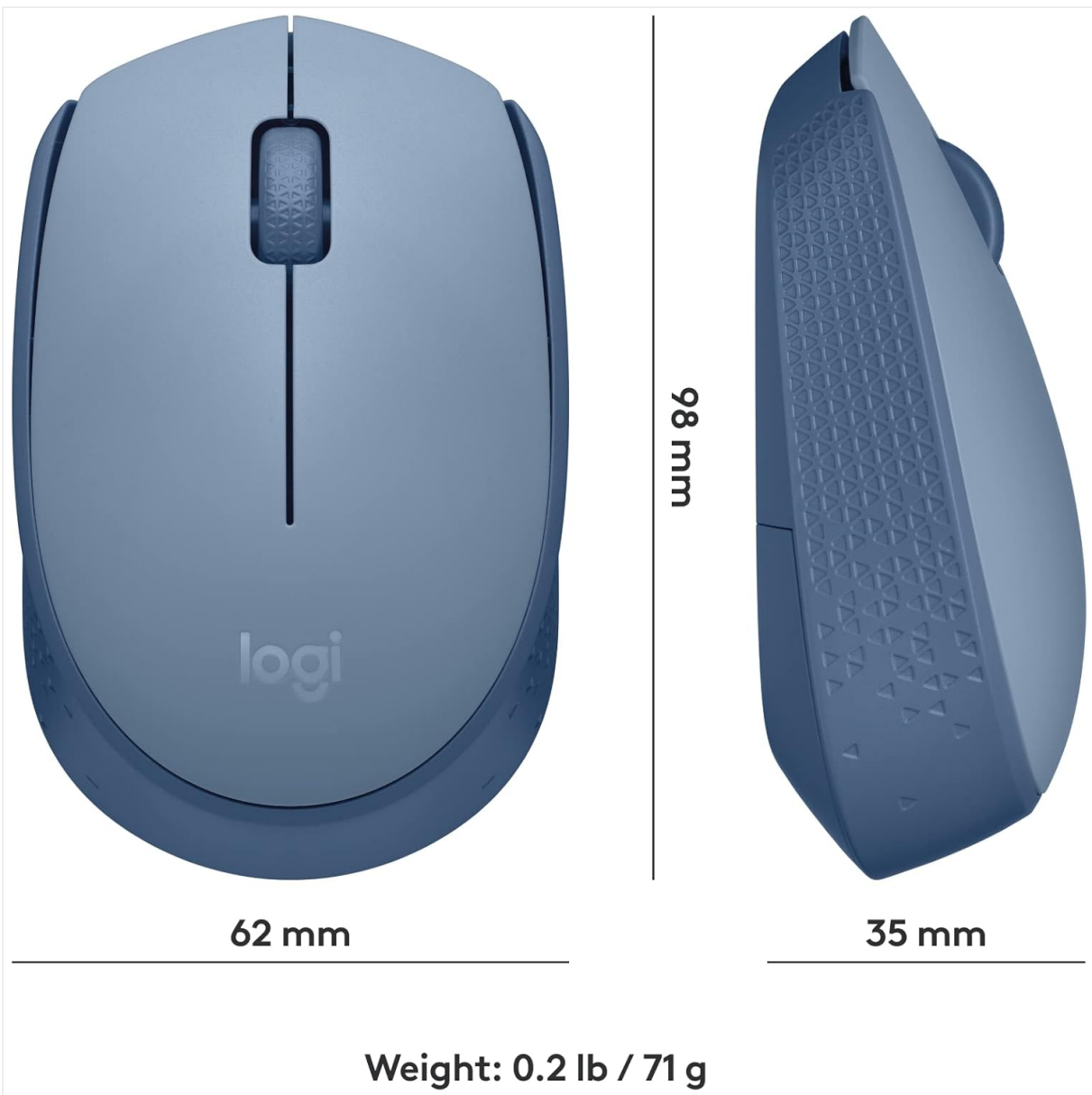



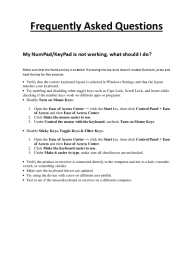

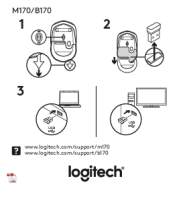


Figure 9: Product dimensions and weight.

## WARRANTY AND SUPPORT

For detailed warranty information and technical support, please refer to the official Logitech website or the user manual provided with your product. A digital version of the user manual is available at: [Logitech M170 User Manual \(PDF\)](#).

You can also visit the official Logitech store for more information and support resources [Logitech Store](#).

|   |  |
|---|--|
|     | <p><a href="#">Logitech M170/M171 Wireless Mouse: Setup Guide and Features</a></p> <p>Get started with your Logitech M170/M171 wireless mouse. This guide provides step-by-step setup instructions, details product features, and offers troubleshooting tips for reliable wireless connectivity.</p>              |
|    | <p><a href="#">Logitech M170/M171/B170 Wireless Mouse Setup Guide</a></p> <p>A setup guide for the Logitech M170, M171, and B170 wireless mice, detailing features, setup instructions, and troubleshooting.</p>   |
|    | <p><a href="#">Logitech Marathon Mouse M705: Getting Started Guide &amp; Features</a></p> <p>Comprehensive guide to setting up and using the Logitech Marathon Mouse M705, including features, troubleshooting, and Unifying receiver setup.</p>   |
|    | <p><a href="#">Logitech MK295/K295 Wireless Keyboard and Mouse Combo User Guide</a></p> <p>User guide for the Logitech MK295/K295 wireless keyboard and mouse combo, covering troubleshooting, battery information, operating distance, indicator lights, storing the USB receiver, and cleaning instructions.</p> |
|  | <p><a href="#">Logitech M170/M171 Wireless Mouse Setup Guide</a></p> <p>A comprehensive setup guide for the Logitech M170 and M171 wireless mice, covering installation, features, and troubleshooting.</p>  |
|  | <p><a href="#">Logitech M170/B170 Wireless Mouse Quick Start Guide</a></p> <p>Setup instructions for the Logitech M170 and B170 wireless mice, including power, receiver storage, and connection to computers.</p>   |