

## Wallpad L6

# Wallpad L6 Gold Brushed Aluminum Wall Module User Manual

Model: L6 - Dual USB Charging Module

## 1. INTRODUCTION

This manual provides detailed instructions for the installation, operation, and maintenance of the Wallpad L6 Gold Brushed Aluminum Wall Module, specifically the dual USB charging variant. Please read this manual thoroughly before installation and use to ensure safe and efficient operation.

## 2. SAFETY INSTRUCTIONS

- Installation must be performed by a qualified electrician in accordance with local electrical codes and regulations.
- Always disconnect power at the circuit breaker before installing or servicing the module.
- Do not install in wet or damp locations.
- Ensure all wiring connections are secure and properly insulated.
- Do not exceed the specified electrical ratings of the module.
- Keep out of reach of children.

## 3. PACKAGE CONTENTS

Verify that all components are present before beginning installation:

- Wallpad L6 Gold Brushed Aluminum Wall Module (Dual USB Charging)
- Mounting Screws
- User Manual (this document)

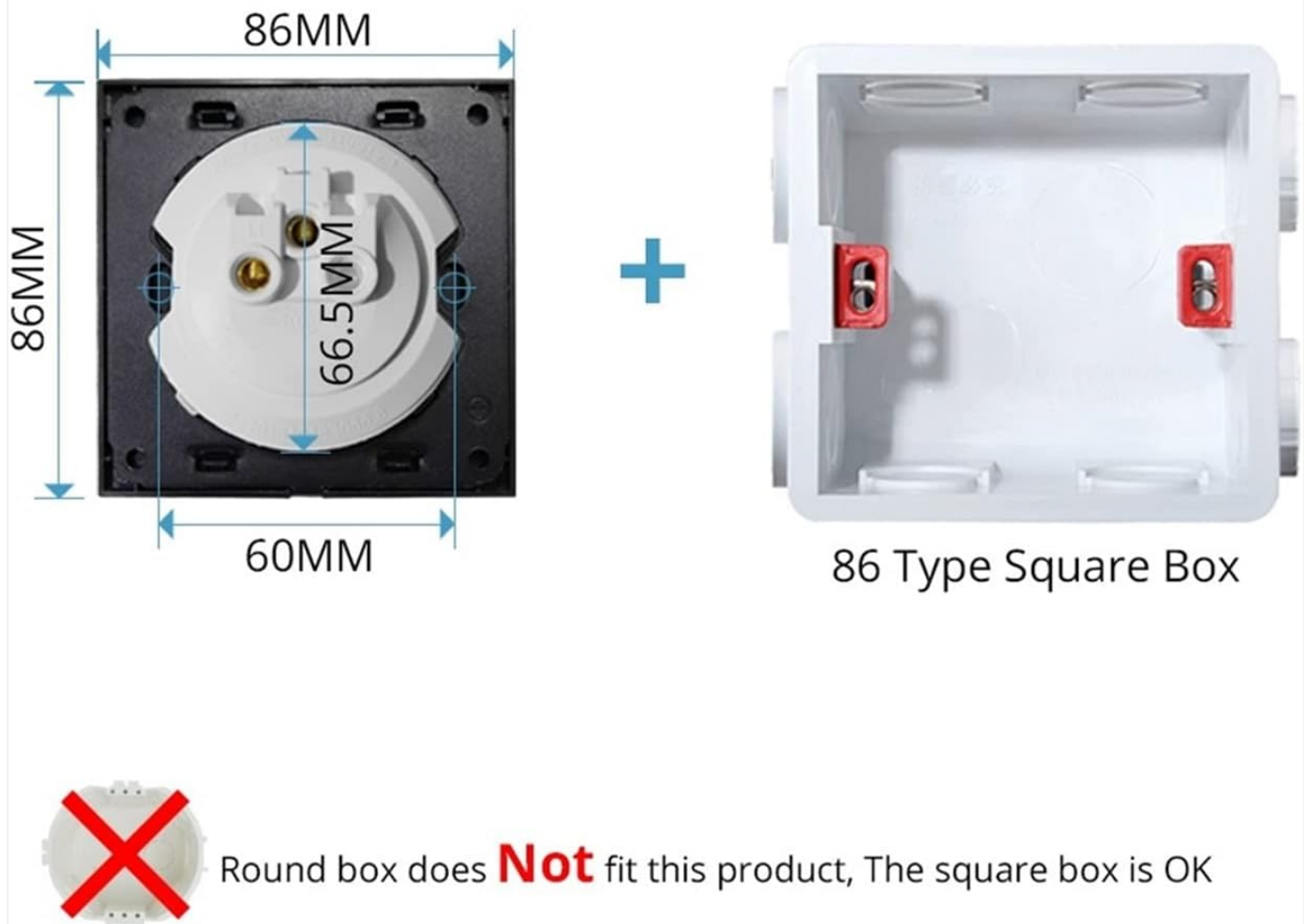
*Note: Other modules (e.g., EU French Socket, Wall Switch) are sold separately and may have different installation requirements.*

## 4. SETUP AND INSTALLATION

This section outlines the general steps for installing the Wallpad L6 module. Professional installation is recommended.

1. **Prepare the Installation Area:** Ensure the power supply to the installation area is turned off at the main circuit breaker.
2. **Verify Compatibility:** The Wallpad L6 module is designed for an 86 Type Square Box. Round boxes are not compatible.
3. **Connect Wiring:** Connect the live, neutral, and ground wires to the corresponding terminals on the back of the module. Refer to the wiring diagram provided with the product packaging for specific connections.
4. **Mount the Module:** Carefully place the module into the 86 Type Square Box. Secure it using the provided mounting screws. Ensure the module is flush with the wall surface.
5. **Attach Faceplate:** Secure the brushed aluminum faceplate onto the module.
6. **Restore Power:** Once installation is complete and all connections are secure, restore power at the circuit breaker.

## Back Size & Mounting



**Figure 4.1:** Back view of the Wallpad L6 module showing dimensions (86mm x 86mm, 60mm depth, 66.5mm screw distance) and an 86 Type Square Box. This module requires an 86 Type Square Box for proper installation; round boxes are not compatible.

## 5. OPERATING INSTRUCTIONS (DUAL USB CHARGING MODULE)

The Wallpad L6 Dual USB Charging Module provides convenient power for charging compatible devices.



**Figure 5.1:** Front view of the Wallpad L6 dual USB charging module. It features two USB-A ports and a red LED indicator light at the top.

1. **Connect Device:** Plug your USB charging cable into one of the two USB-A ports on the module.
2. **Charging Indication:** The red indicator light (if present and active) will illuminate to show that the module is powered and ready to charge.
3. **Charging:** Connect the other end of your USB cable to your compatible electronic device (e.g., smartphone, tablet). The device should begin charging automatically.
4. **Disconnect:** Once charging is complete, safely disconnect your device and then the USB cable from the module.

*Note: The Wallpad L6 series also offers other modules like EU French Sockets and Wall Switches, which operate according to their specific functions. The images below illustrate examples of these other modules within the L6 series.*



**Figure 5.2:** An example of a Wallpad L6 EU French Socket module, showcasing its design within a living space.

# Satin Aluminum Panel

*High Quality, Luxury Surface*

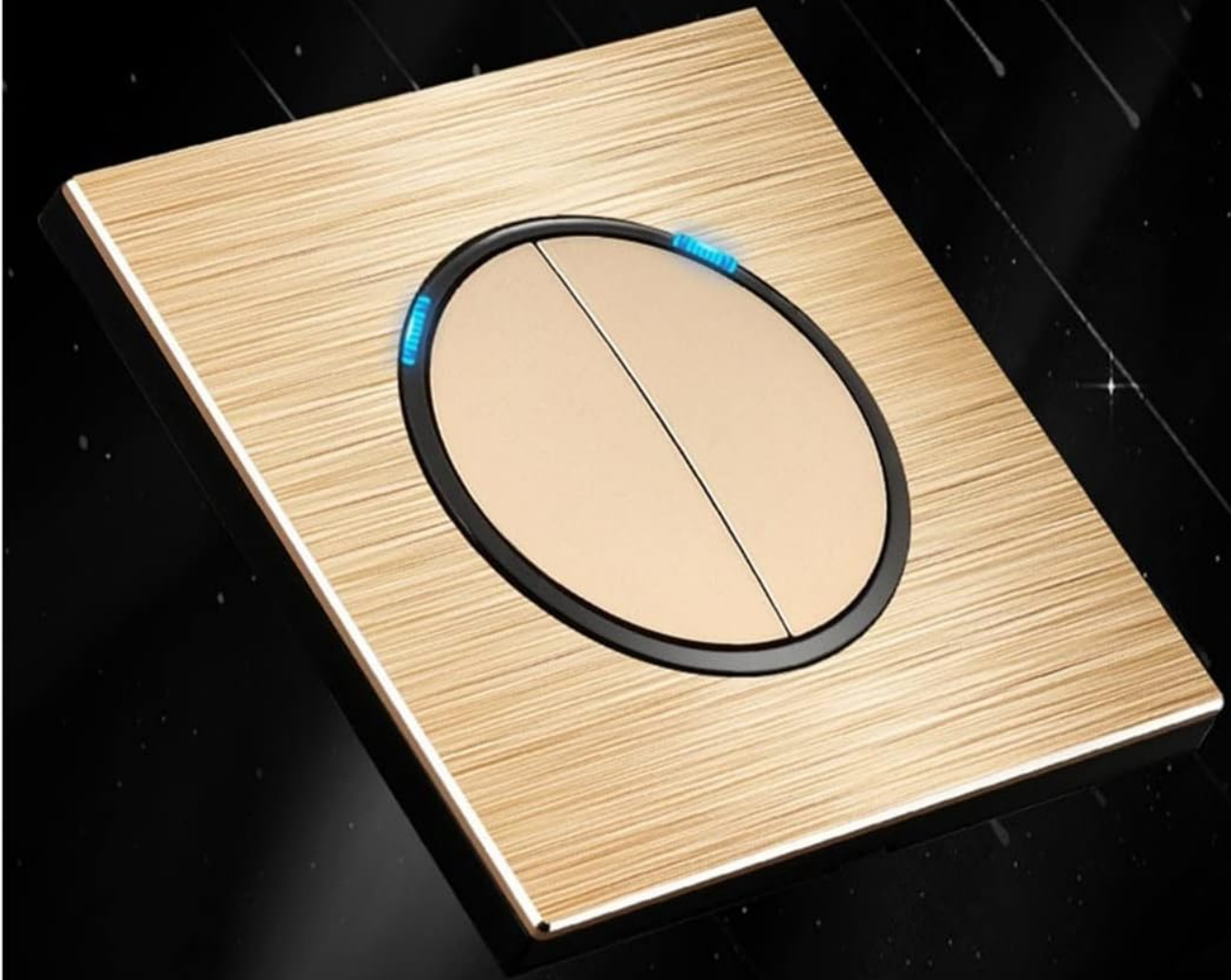


Figure 5.3: An example of a Wallpad L6 wall switch module, featuring a satin aluminum panel and illuminated touch buttons.

## 6. MAINTENANCE

- **Cleaning:** Disconnect power before cleaning. Use a soft, dry cloth to wipe the surface of the module. Do not use abrasive cleaners, solvents, or excessive moisture.
- **Inspection:** Periodically inspect the module for any signs of damage, loose connections, or discoloration. If any



issues are found, disconnect power and consult a qualified electrician.

## 7. TROUBLESHOOTING

Problem	Possible Cause	Solution
Module not charging devices.	No power to the module. Faulty USB cable or device. Overload protection activated.	Check circuit breaker and ensure power is on. Try a different USB cable or device. Disconnect devices, wait a few minutes, then reconnect.
Module is loose in the wall.	Improper mounting.	Disconnect power, tighten mounting screws. Ensure an 86 Type Square Box is used.
Red indicator light is off.	No power to the module.	Check circuit breaker and wiring connections. Consult a qualified electrician if necessary.

## 8. SPECIFICATIONS

- **Model:** Wallpad L6 (Dual USB Charging)
- **Material:** Gold Brushed Aluminum Panel
- **Compatibility:** 86 Type Square Box
- **Dimensions:** Approximately 86mm x 86mm (Front Panel)
- **USB Output:** *Please refer to product packaging for exact USB output specifications.*
- **Date First Available:** 4 April 2024

## 9. WARRANTY AND SUPPORT

For warranty information and technical support, please refer to the documentation included with your purchase or contact your retailer. Keep your proof of purchase for warranty claims.

For further assistance, you may visit the official Wallpad website or contact their customer service department.

