

Manuals+

[Q & A](#) | [Deep Search](#) | [Upload](#)

manuals.plus /

› [BOMGIE](#) /

› [BOMGIE UTL-336PE 1/3 HP Automatic Submersible Utility Pump Instruction Manual](#)

BOMGIE UTL-336PE

BOMGIE UTL-336PE 1/3 HP Automatic Submersible Utility Pump Instruction Manual

Model: UTL-336PE

1. INTRODUCTION

The BOMGIE UTL-336PE is a 1/3 HP automatic submersible utility pump designed for efficient water removal. This pump is suitable for draining water from various areas such as pool covers, basements, swimming pools, hot tubs, ponds, window wells, and rain barrels. Its automatic on/off switch and durable construction make it a reliable tool for managing unwanted water.

2. SAFETY INFORMATION

- Always ensure the pump is unplugged when the water level reaches approximately 1/8 inch.
- Always use the integrated handle to lift the pump. Never use the power cord to lift or carry the pump.
- Do not allow the power plug to fall into water, and do not stand in water while the pump is plugged into an electrical outlet.
- Do not run the pump dry. Operating the pump without water will cause damage to internal seals and may void the product's warranty.
- Protect the electrical cord from sharp objects, hot surfaces, oil, and chemicals. Avoid kinking the cord.
- This unit is designed for portable applications and is not intended for permanent installation as a sump pump.
- The pump should always rest on a level, solid base during operation.
- Keep the pump inlet screen clear of debris to prevent blockages.
- Do not pump directly on sand or dirt, as this can damage the pump.
- A minimum water level of 1 inch is required to prime the pump for proper operation.

3. PRODUCT OVERVIEW

The BOMGIE UTL-336PE pump is constructed from durable thermoplastic material, ensuring longevity and corrosion resistance. It features a convenient handle for easy portability and a powerful 360° bottom suction design capable of

handling solids up to 1/8 inch.



Figure 1: BOMGIE UTL-336PE Automatic Water Pump. This image shows the overall design of the black submersible pump with its blue handle and power cord.

Key Features:

- **Automatic On/Off Switch:** The pump automatically activates when water is detected at 1-1/2 inches and turns off after the water level drops below 1/4 inch for an additional 60 seconds.
- **Powerful Suction:** 360° bottom suction design efficiently removes water and can handle solids up to 1/8 inch, preventing damage to the pump.
- **Multiple Discharge Options:** Equipped with a 1-inch NPT discharge and includes a 3/4-inch garden hose adapter for versatile connections.
- **Durable Construction:** Made with corrosion-resistant thermoplastic material and features a durable 304 stainless steel shaft.
- **Thermal Overload Protection:** Built-in automatic thermal overload protector ensures safe and reliable

operation.

AUTO-OPERATION WITH AUTOMATIC ON/OFF SWITCH

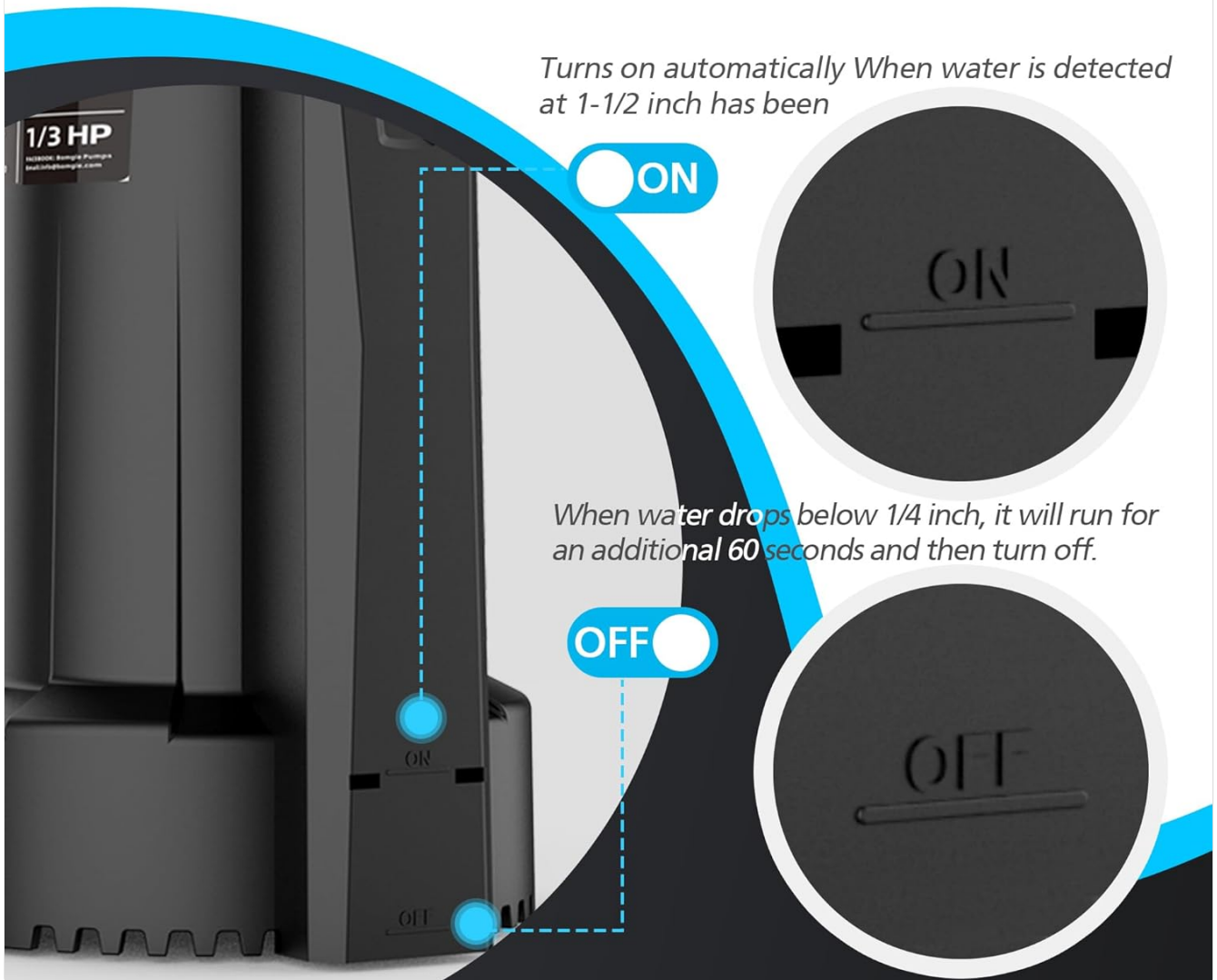
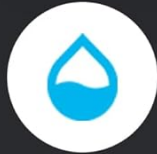


Figure 2: Automatic On/Off Switch. This image highlights the automatic on (1-1/2 inch) and off (1/4 inch) water level detection points on the pump.

POWERFUL 360° BOTTOM SUCTION



MAX.HEAD: 33.5FT



Max.Flow: 2250GPH

Figure 3: Powerful 360° Bottom Suction. This image illustrates the pump's bottom suction capability, showing water being drawn in from all sides.

MULTIPLE DISCHARGE HOOKUP OPTIONS



Figure 4: Multiple Discharge Hookup Options. This image demonstrates how to attach the 3/4-inch garden hose adapter to the 1-inch NPT discharge port.

4. SETUP AND INSTALLATION

- Attach Hose Adapter:** If using a standard garden hose, securely attach the provided 3/4-inch garden hose adapter to the pump's 1-inch NPT discharge outlet. Ensure a tight connection to prevent leaks.
- Connect Garden Hose:** Connect a standard 5/8-inch or larger diameter garden hose to the adapter. Make certain you unwind the garden hose completely and ensure there are no kinks, bends, or sharp coils, as these can restrict water flow and prevent proper priming.
- Position the Pump:** Place the pump on a level, solid base in the area where water needs to be removed. Ensure the pump inlet screen is clear of sand, dirt, or debris.
- Power Connection:** Plug the pump into a 115 Volt GFCI (Ground Fault Circuit Interrupter) power outlet.

Important: The water level must be at least 1 inch for the pump to prime and operate correctly.

5. OPERATING INSTRUCTIONS

The BOMGIE UTL-336PE pump features an automatic on/off switch for convenient, hands-free operation.

- **Automatic Activation:** The pump will automatically turn on when water is detected at a level of approximately 1-1/2 inches.
- **Automatic Shut-off:** Once the pump has removed water to approximately 1/4 inch, it will continue to run for an additional 60 seconds to ensure maximum drainage, then automatically turn off.
- **Manual Operation:** If you need to operate the pump manually, ensure it is submerged in at least 1 inch of water before plugging it in. Unplug the pump to turn it off.

Video 1: BOMGIE 1/3 Automatic Submersible Water Pump. This video demonstrates the automatic operation of the pump, showing it turning on when water is detected and turning off after draining to a low level.

6. MAINTENANCE

- **Clean Screen:** Regularly inspect and clean the pump's inlet screen to ensure it remains free of debris, sand, or dirt. A blocked screen can reduce efficiency and potentially damage the pump.
- **Storage:** After each use, remove the pump and hose from the location. Remove any remaining water from the pump using a squeegee, mop, sponge, towel, or wet/dry vacuum. Store the pump in a clean, dry place.

7. TROUBLESHOOTING

Problem	Possible Cause	Corrective Action
Pump does not start or run	Blown fuse	Replace fuse
	Tripped breaker	Reset breaker
	Plug disconnected	Secure plug
	Thermal overload	Unplug the pump for 30 minutes, then plug in
	Corroded plug	Clean plug prongs
	Motor failed	Contact support
Pump cannot pump water out	Screen blocked	Clean screen
	Hose kinked, bent sharply, or coiled	Straighten hose
	Airlock	Clean airlock release feature
	Hose diameter too small	Use larger diameter hose

Problem	Possible Cause	Corrective Action
	Hose length too long	Use shorter hose
	Impeller loose on shaft	Reassemble impeller
	Impeller broken	Contact support

8. SPECIFICATIONS

Property	Specification
Brand	BOMGIE
Model	UTL-336PE
Voltage	115 Volts (AC)
Horsepower	0.33 HP
Amps	4A
Maximum Flow Rate	2250 Gallons Per Hour (37.5 GPM)
Maximum Lifting Height	33.5 Feet
Discharge Size	1-1/4 inch (with 3/4" Garden Hose Adapter)
Power Cord Length	10 ft
Material	Copper, Thermoplastic
Product Dimensions	7.6"L x 7"W x 12"H
Item Weight	8.6 Pounds

9. WARRANTY AND SUPPORT

The BOMGIE UTL-336PE Automatic Submersible Utility Pump comes with an 18-month warranty from the manufacturer.

For any concerns or issues with your product, please do not hesitate to contact the BOMGIE Service Team. They are available to help within 24 hours.