

[Manuals.plus](#) /

> [RLDVAY](#) /

> RLDVAY 5 Inch Low Profile King Box Spring Instruction Manual

RLDVAY SBK-5

RLDVAY 5 Inch Low Profile King Box Spring Instruction Manual

Model: SBK-5

PRODUCT OVERVIEW

The RLDVAY 5 inch Low Profile King Box Spring is designed to provide a sturdy and stable foundation for your mattress. Its low-profile design is ideal for taller mattresses or for those who prefer a lower bed height. Constructed with a heavy-duty metal frame and covered with a high-quality fabric, this box spring ensures durability, noise-free support, and easy maintenance.



Image: The RLDVAY 5 inch Low Profile King Box Spring, showcasing its white fabric cover and low profile.

Key Features:

- **Practical & Durable:** Sturdy steel internal frame provides stable support and is squeak-resistant for excellent

sleep quality.

- **Quick & Easy Assembly:** Integrated structure design allows for simple and fast assembly. All necessary tools and instructions are included.
- **Easy to Clean:** Features a high-quality fabric cover that is removable for spot cleaning.
- **Low Profile Design:** At 5 inches in height, it is perfect for use with thicker mattresses or for achieving a lower bed height.
- **Durably Engineered:** The steel framework supports a maximum weight capacity of 700 lbs.

High Quality Fabric Cover & Sturdy Interior Frame

- 🧼 Easy To Clean
- 🏠 Stable Structure

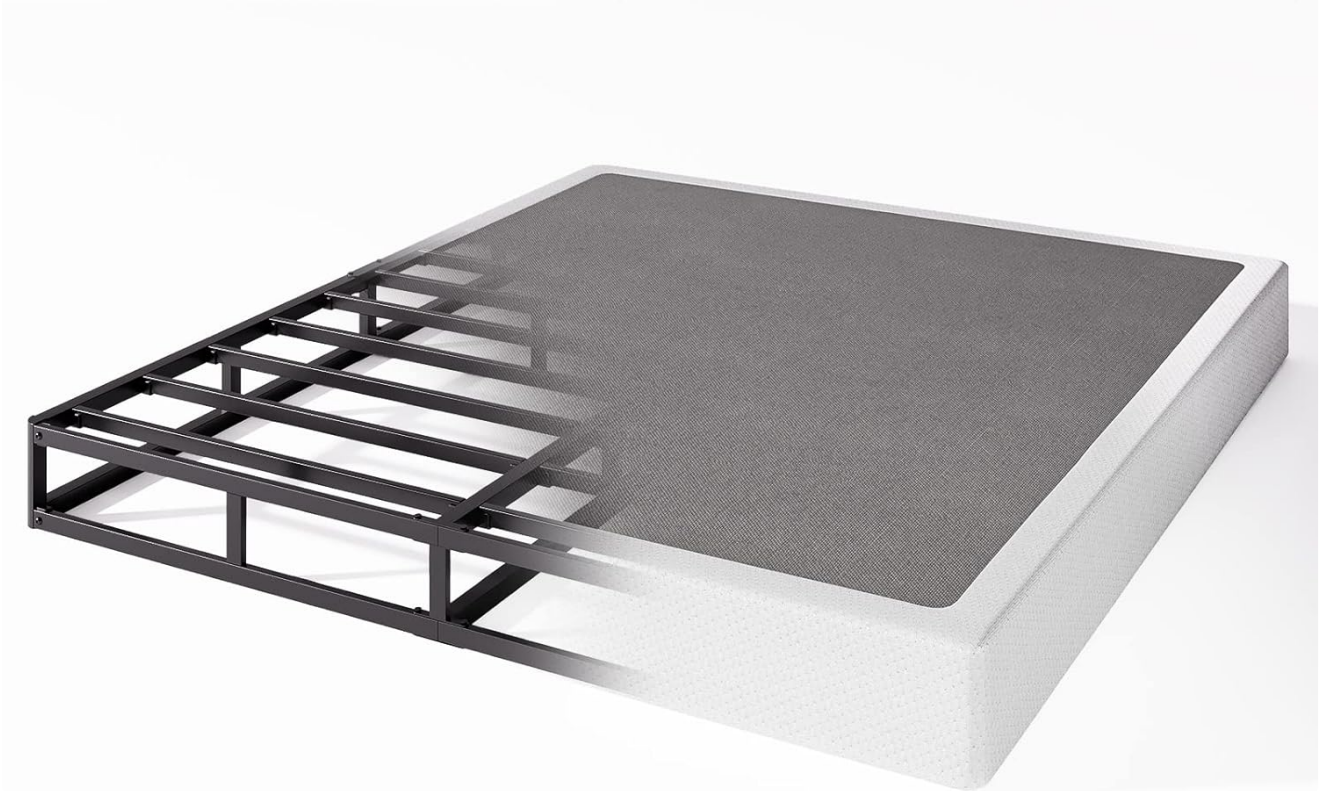


Image: A cutaway view of the box spring, illustrating the high-quality fabric cover and the sturdy metal interior frame.

SAFETY INFORMATION

Please read and understand all safety information before assembly and use. Failure to follow these instructions may result in injury or damage to the product.

- Exercise caution around potential sharp edges during assembly.
- If the fabric cover is damaged, handle with care to avoid contact with internal components.
- Ensure all bolts and connections are securely tightened before placing a mattress on the box spring.
- Do not exceed the maximum weight capacity of 700 lbs.
- Keep small parts and packaging materials away from children and pets during assembly.

SETUP AND ASSEMBLY INSTRUCTIONS

The RLDVAY box spring features an integrated structure design for quick and easy assembly. All necessary parts and tools are included in the package.

Package Contents:

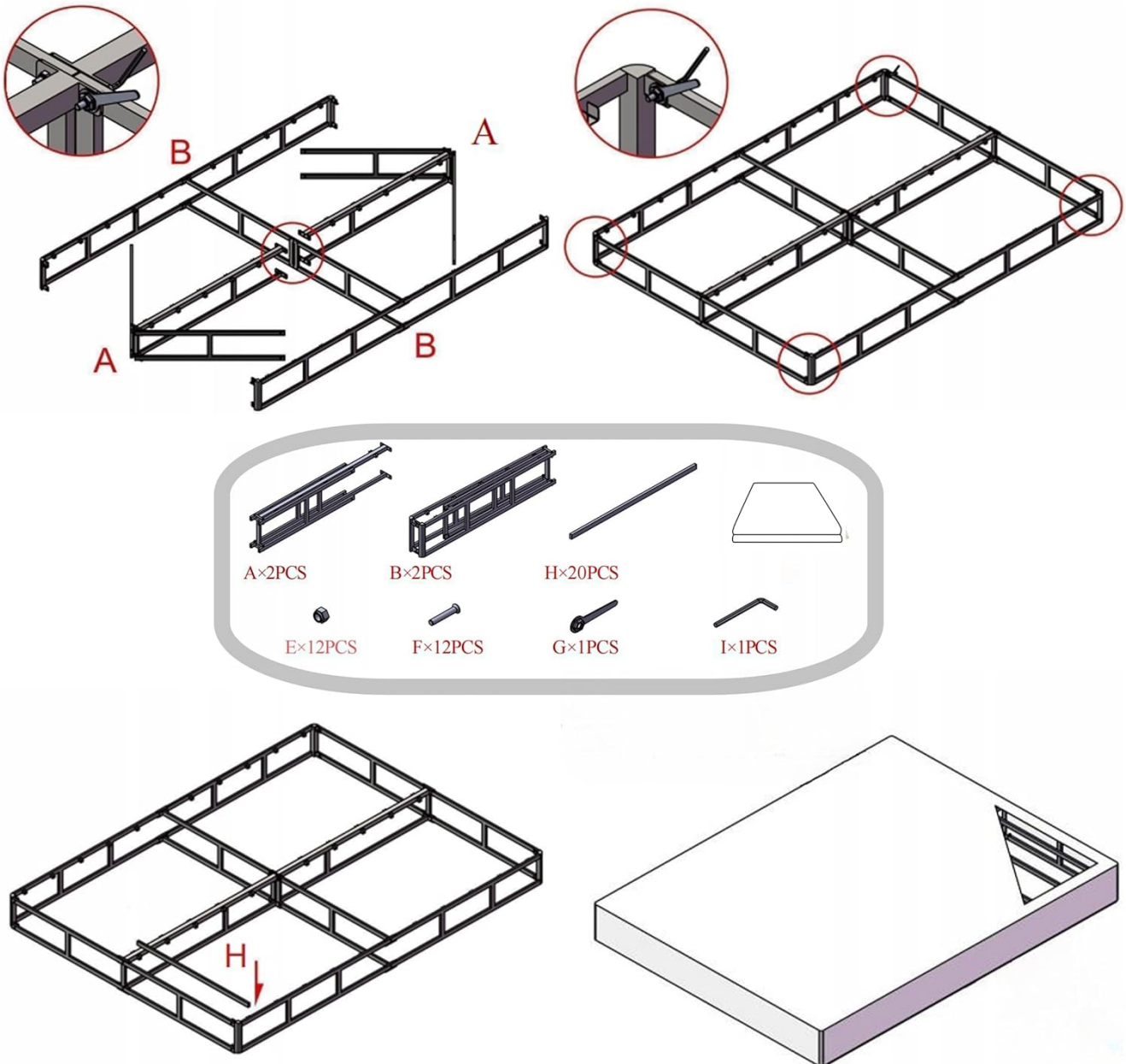


Image: Diagram showing all components included for assembly, including frame sections, slats, bolts, and tools.

- Step 1: Unpack Components.** Carefully remove all parts from the packaging. Verify that all components listed in the instruction manual are present.
- Step 2: Assemble the Main Frame.** Connect the main frame sections (A and B) as indicated in the diagram. Ensure the connecting points align correctly.



Image: Close-up of frame sections being connected, showing the interlocking mechanism.

- Step 3: Secure Frame Corners.** Once the main frame is assembled, secure the corners using the provided bolts (E) and the hex key (I). Tighten all bolts firmly.



Image: Detail of a secured corner joint on the metal frame.

- Step 4: Install Support Slats.** Place the metal support slats (H) into their designated slots across the frame. Ensure they are evenly spaced and securely seated.



Image: Close-up of a metal slat being inserted into the frame's support channel.

- Step 5: Attach Fabric Cover.** Once the metal frame is fully assembled and all connections are secure, carefully place the fabric cover over the frame. Ensure it fits snugly and is properly aligned. The cover is designed for easy attachment and removal.
- Step 6: Final Check.** Before use, double-check all connections to ensure they are tight and the box spring is stable.

PRACTICAL & DURABLE

Rounded corners design. This box spring is made of reinforced steel sturdy and stable structure.



EASY TO ASSEMBLE

Integrated structure design for quick and easy assembly

Image: Visual representation highlighting the rounded corners for durability and the integrated structure for easy assembly.

OPERATING INSTRUCTIONS (USAGE)

The RLDVAY 5 inch Low Profile King Box Spring is designed to be a direct foundation for your mattress. No special operation is required beyond proper placement.

- **Placement:** Position the assembled box spring on your bed frame or directly on the floor if using it as a standalone foundation. Ensure it is level and stable.
- **Mattress Compatibility:** This King size box spring is compatible with King size mattresses (approximately 80"L x 76"W).
- **Mattress Placement:** Carefully place your mattress directly on top of the box spring. Ensure the mattress is centered and fully supported by the box spring.
- **Weight Distribution:** The box spring is engineered to evenly distribute the weight of your mattress and occupants, providing consistent support.



Image: The RLDVAY King Box Spring installed on a bed frame in a bedroom, ready for a mattress.

MAINTENANCE AND CARE

Proper care will extend the life of your RLDVAY box spring and maintain its performance.

- **Cleaning the Fabric Cover:** The high-quality fabric cover is designed for easy spot cleaning. Use a mild detergent and a damp cloth to clean any spills or stains. Avoid saturating the fabric.
- **Removing the Cover:** The fabric cover can be removed for more thorough cleaning if necessary. Follow the reverse steps of assembly to detach it.
- **Frame Inspection:** Periodically inspect the metal frame and all connections for any signs of loosening. Retighten any loose bolts to maintain stability and prevent squeaks.
- **Avoid Harsh Chemicals:** Do not use abrasive cleaners or harsh chemicals on the fabric or metal frame, as this may damage the finish or material.

TROUBLESHOOTING

If you encounter any issues with your RLDVAY box spring, refer to the following common problems and solutions:

Problem	Possible Cause	Solution
Squeaking Noise	Loose bolts or connections in the frame.	Inspect all bolts and re-tighten them firmly using the provided hex key. Ensure all frame sections are properly seated.
Instability / Wobbling	Uneven assembly or loose connections.	Verify that the box spring is placed on a flat, level surface. Check all frame connections and ensure they are fully tightened. Re-assemble if necessary, following instructions carefully.
Fabric Cover Does Not Fit Properly	Improper alignment during installation.	Remove the fabric cover and re-align it, ensuring all corners and edges are properly seated before zipping or securing.

SPECIFICATIONS

Detailed specifications for the RLDVAY 5 inch Low Profile King Box Spring (Model: SBK-5).

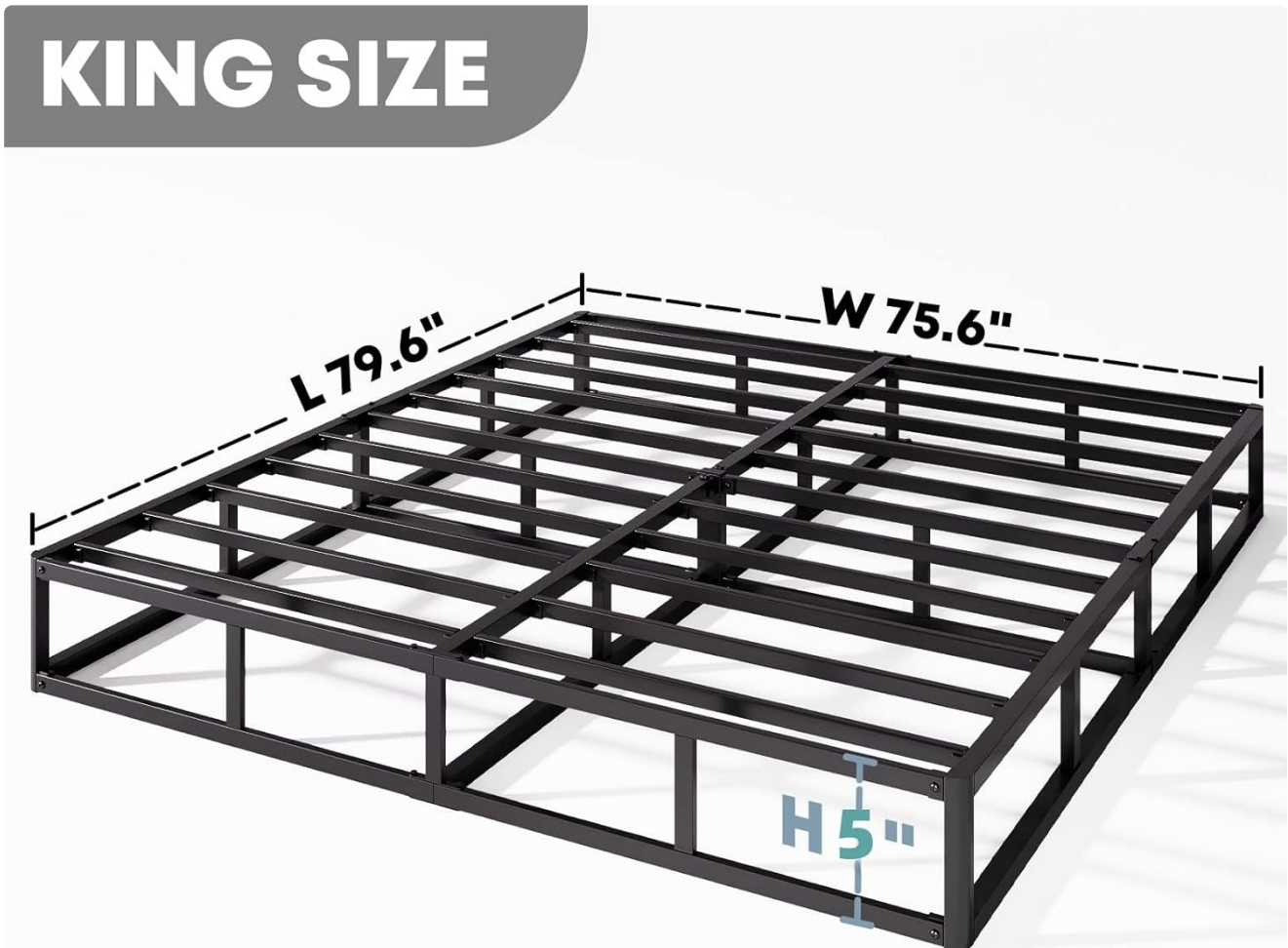


Image: Diagram illustrating the precise dimensions of the King size box spring.

Attribute	Detail
Model Number	SBK-5
Size	King
Product Dimensions (L x W x H)	79.6"L x 75.6"W x 5"H
Item Weight	39.9 pounds
Color	White
Material	Heavy Duty Metal (Powder Coated), Fabric Cover
Maximum Weight Capacity	700 lbs
Assembly Required	Yes
Special Feature	Squeak Resistant

WARRANTY AND SUPPORT

RLDVAY is committed to providing high-quality products. For any questions, concerns, or support needs regarding your 5 inch Low Profile King Box Spring, please contact our customer service.

- **Warranty Information:** Specific warranty details may vary. Please refer to the documentation included with your purchase or contact RLDVAY customer support for precise warranty terms.
- **Protection Plans:** Extended protection plans may be available for purchase. For details, please visit the product page on Amazon or contact your retailer. Examples include:
 - 2-Year Protection Plan
 - 3-Year Protection Plan
- **Customer Support:** For assistance with assembly, troubleshooting, or parts replacement, please reach out to RLDVAY customer service. You can typically find contact information on the product packaging or through the RLDVAY store page on Amazon.
- **Returns:** This product typically has a 30-day return policy. Please check the retailer's return policy for specific terms and conditions.