

[Manuals.plus](#) /

> [TEQIN](#) /

> TEQIN Digital Night Vision Monocular User Manual - Model B0BPHQLVN7

## TEQIN B0BPHQLVN7

# TEQIN Digital Night Vision Monocular User Manual

Model: B0BPHQLVN7

## INTRODUCTION

---

The TEQIN Digital Night Vision Monocular is designed for clear observation in various lighting conditions, including complete darkness. This device captures high-definition photos and videos, offering a versatile tool for outdoor activities such as hunting, camping, and wildlife observation. It features digital zoom, an infrared illuminator, and a compact design for portability.



Image: Two TEQIN Digital Night Vision Monoculars, one shown with a helmet mount adapter.



Image: A TEQIN Digital Night Vision Monocular mounted on a helmet, demonstrating a potential use configuration.

## PRODUCT COMPONENTS

---

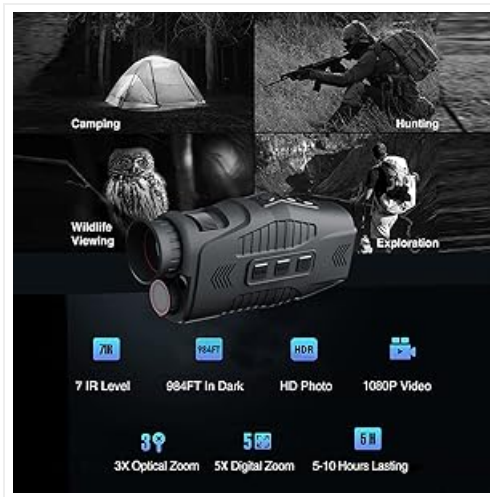


Image: Diagram illustrating key components of the monocular, including the Hand Strap, Battery Cover, Objective Lens, Microphone (MIC), and IR LED.

- **Objective Lens:** Gathers light from the scene.
- **IR LED:** Infrared illuminator for night vision.
- **MIC:** Microphone for audio recording with videos.
- **Battery Cover:** Access point for battery installation.
- **Hand Strap:** For secure handling.

## SETUP

---

### 1. Battery Installation

1. Locate the battery cover on the device.
2. Open the battery cover.
3. Insert the required batteries (refer to product packaging for battery type). Ensure correct polarity.
4. Close the battery cover securely.

### 2. Memory Card Installation (TF-card not included)

1. Locate the TF-card slot on the device.
2. Gently insert a compatible TF-card into the slot until it clicks into place.
3. To remove, press the card gently to release it.

### 3. Initial Power On

1. Press and hold the **ON/OFF** button until the screen illuminates.
2. The device will boot up and display the live view.

## OPERATING INSTRUCTIONS

---



Image: Diagram illustrating the control buttons and ports on the TEQIN Night Vision Monocular, including Focus Adjustor, Photo/Video Button, IR Up/Zoom In, IR Down/Zoom Out, Menu, Mode, ON/OFF Button, TF Card Slot, Type-C Charging Port, and Tripod Adapter.

## Button Functions:

- **ON/OFF Button:** Powers the device on or off.
- **MODE Button:** Switches between photo, video, and playback modes.
- **MENU Button:** Accesses the device settings.
- **Photo/Video Button:** Takes a photo or starts/stops video recording.
- **IR Up/Zoom In Button:** Increases infrared intensity or zooms in digitally.
- **IR Down/Zoom Out Button:** Decreases infrared intensity or zooms out digitally.
- **Focus Adjustor:** Rotates to achieve a clear image.

## 1. Adjusting Focus

Rotate the **Focus Adjustor** located near the eyepiece until the image on the screen appears sharp and clear. This adjustment is crucial for optimal viewing at different distances.

## 2. Day and Night Vision Modes

The monocular operates in both day and night conditions. In daylight, it captures full-color images and videos. In low light or complete darkness, the device automatically switches to night vision mode, utilizing its infrared illuminator.

# BOTH DAY & NIGHT USE CAPTURE CLEAR VIDEO & PHOTOS

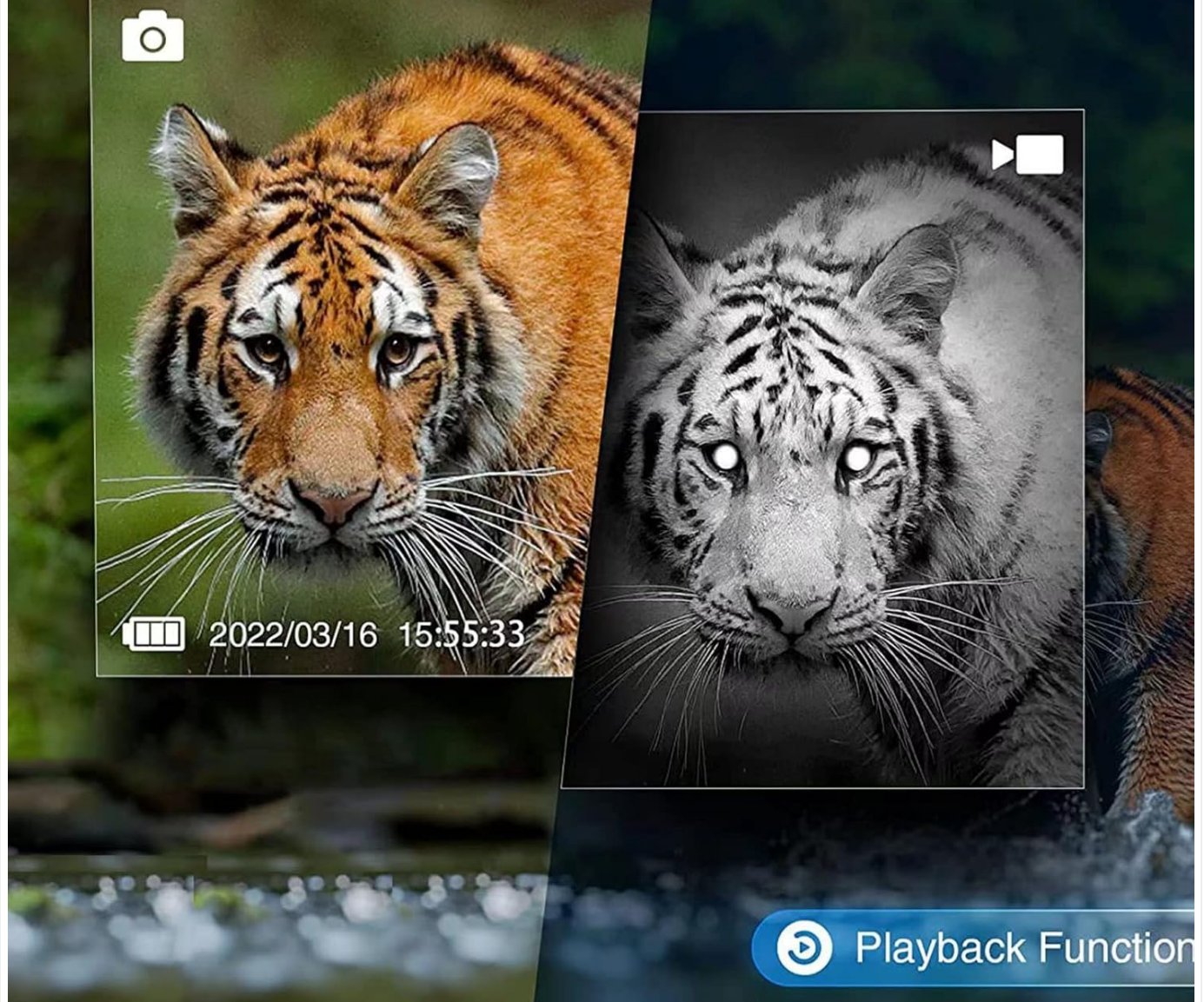


Image: Comparison showing a tiger in daylight (color) and in night vision mode (monochrome with illuminated eyes).

### 3. Adjusting Infrared (IR) Illumination

In night vision mode, the built-in 850nm IR illuminator provides visibility in darkness. There are 7 adjustable IR levels. Use the **IR Up** and **IR Down** buttons to increase or decrease the IR intensity to achieve the best visibility for your environment.

# Clear Night Vision in 100% Darkness



Image: Depicts a deer in a dark forest, viewed through the monocular, with examples of different IR levels (1, 3, 5, 7) showing increasing clarity.

## 4. Digital Zoom

The device features 5X digital zoom. Use the **IR Up/Zoom In** and **IR Down/Zoom Out** buttons to adjust the magnification. This allows for closer observation of distant targets.

# PROFESSIONAL OPTICAL MAGNIFICATION SYSTEM



Image: Shows a monocular on a tripod in a forest setting, with an inset demonstrating 4X digital zoom on a bear.

## 5. Capturing Photos and Videos

- **Photo Mode:** Press the **MODE** button until the photo icon appears on the screen. Press the **Photo/Video Button** once to take a picture.
- **Video Mode:** Press the **MODE** button until the video icon appears on the screen. Press the **Photo/Video Button** once to start recording, and press it again to stop.

## 6. Playback Function

To review captured photos and videos, press the **MODE** button to enter playback mode. Use the navigation buttons (often the IR Up/Down buttons double as navigation in menu/playback) to browse through your media. Press the **Photo/Video Button** to play a video or view a photo in full screen.

## 7. Connecting to a Computer

Connect the monocular to a computer using a Type-C USB cable (not included). The device should appear as a removable storage device, allowing you to transfer photos and videos from the TF-card.

## MAINTENANCE

- **Cleaning Lenses:** Use a soft, lint-free cloth specifically designed for optical lenses. Do not use abrasive materials or harsh chemicals.
- **Storage:** Store the monocular in a cool, dry place away from direct sunlight and extreme temperatures. Remove batteries if storing for extended periods.
- **Water Resistance:** While designed for outdoor use, avoid submerging the device in water. Protect it from heavy rain.

## TROUBLESHOOTING

Problem	Possible Cause	Solution
Device does not power on.	Low or dead batteries; incorrect battery installation.	Replace batteries; ensure correct polarity.
Image is blurry.	Focus not adjusted; dirty objective lens.	Rotate the Focus Adjustor; clean the objective lens.
Poor night vision performance.	IR illuminator off or set too low.	Increase IR intensity using the IR Up button.
Cannot save photos/videos.	No TF-card inserted; TF-card full or corrupted.	Insert a TF-card; delete old files or replace card.

## SPECIFICATIONS

Feature	Detail
Brand	TEQIN
Model	B0BPHQLVN7
Color	Black
Night Vision	Yes, 850nm IR illuminator, 7 adjustable levels
Viewing Distance (Full Dark)	Up to 300 meters (984 feet)
Digital Zoom	5X
Objective Lens Diameter	24 Millimeters
Image Resolution	1080P (1920 x 1080p)
Video Resolution	1080P FHD 30FPS
Display Screen	1.5-inch TFT
Storage	TF-card (not included)
Power Source	(Refer to product packaging for battery type)
Item Weight	190 Grams (6.7 ounces)
Material	Metal

Feature	Detail
Dimensions	Approx. 16cm (6.3in) x 7.5cm (2.9in) x 5.5cm (2.1in)



Image: Diagram showing the approximate dimensions of the TEQIN Digital Night Vision Monocular.

## WARRANTY AND SUPPORT

For warranty information or technical support, please refer to the documentation included with your purchase or contact TEQIN customer service directly. Contact details are typically available on the manufacturer's official website or product packaging.

