

[manuals.plus](#) /

› [Daytech](#) /

› [Daytech Wireless Door Chime Entry Alert System User Manual](#)

Daytech DS17

Daytech Wireless Door Chime Entry Alert System User Manual

Model: DS17

INTRODUCTION

The Daytech Wireless Door Chime Entry Alert System provides a reliable solution for monitoring entry and exit points in various environments, including homes, businesses, and offices. This system is designed to alert you when a door or window is opened, enhancing security and awareness. It features a long operating range, multiple chime options, and adjustable volume levels to suit your specific needs.



Image: The Daytech Wireless Door Chime system, showing the main receiver unit and three contact sensors.

PACKAGE CONTENTS

- 1 x Wireless Door Chime Receiver
- 3 x Wireless Door/Window Sensors
- Mounting Hardware (double-sided adhesive tape, screws)
- User Manual (this document)

SETUP AND INSTALLATION

Follow these steps to set up your Daytech Wireless Door Chime system:

Step 1: Powering the Receiver

Plug the wireless receiver into any standard electrical outlet. The receiver will power on and be ready for pairing.

Your browser does not support the video tag.

Video: Demonstrates plugging the receiver into a power outlet. The receiver lights up and emits a sound, indicating it's

powered on.

Step 2: Installing the Door/Window Sensors

Attach both parts of the door sensor to the desired door or window frame using the provided double-sided adhesive tape or screws. Ensure the two parts are aligned and are less than 0.6 inches (1.5 cm) apart when the door/window is closed. The sensor has an "ON/OFF" switch; ensure it is set to "ON" for operation.

Door and Window Alarms for Home

Protect your family's personal and property safety



Image: A person demonstrating the installation of the door sensor using adhesive tape on a door frame. The two parts of the sensor are shown being placed close together.

How to pair and select music?

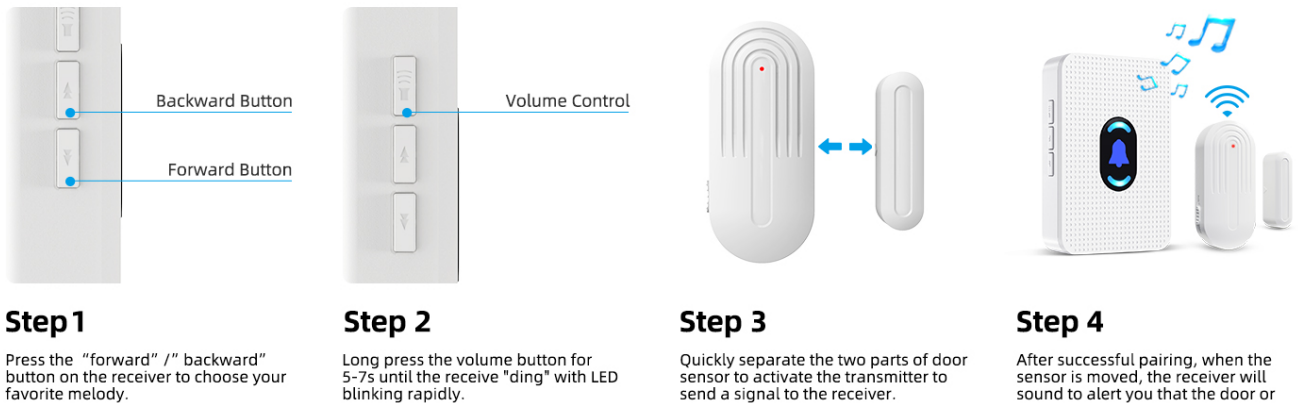


Image: A visual guide illustrating suitable locations for sensor installation, including doors, windows, cabinets, and drawers.

OPERATING INSTRUCTIONS

Pairing Sensors and Selecting Chimes

The sensors and receiver are typically pre-paired from the factory. If re-pairing is needed or to add new sensors:

1. Press the "forward" or "backward" button on the receiver to choose your desired melody.
2. Long press the volume button for 5-7 seconds until the receiver emits a "ding" sound and the LED blinks rapidly.
3. Quickly separate the two parts of the door sensor to activate the transmitter and send a signal to the receiver.
4. After successful pairing, when the sensor is moved (door/window opens), the receiver will sound to alert you.

Mounting door sensor--- Using the adhesive tape



Battery Replacement--- Using the screwdriver

Battery type: CR2450



Image: Step-by-step visual guide for pairing sensors and selecting chime melodies on the receiver unit.

Adjusting Volume and Chime Selection

The receiver offers 20 different ringtones and 5 adjustable volume levels, ranging from 0 dB (mute) to 110 dB. Use the volume buttons on the side of the receiver to cycle through the volume levels. Use the forward/backward buttons to select different chimes.

Loud Alert Sound

5 Adjustable Volume Levels



Plug to Use



20 Ringtones



0-110dB Alarm



LED Indicator



0dB



30dB



60dB



90dB



110dB

Image: Visual representation of the receiver's volume levels (0dB to 110dB) and the availability of 20 different ringtones.

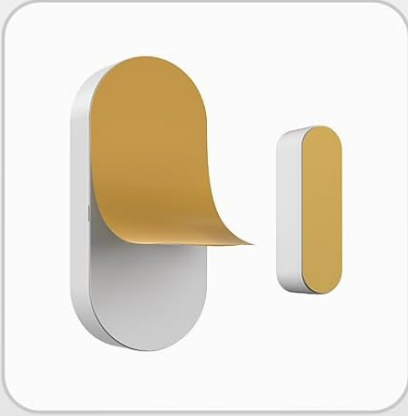
MAINTENANCE

Battery Replacement (Sensor)

The door sensors are powered by a CR2450 lithium battery. When the sensor's performance degrades or it stops transmitting signals, it may be time to replace the battery. Use a small screwdriver to open the sensor casing, replace the CR2450 battery, and then reassemble.

Easy to install and use

Mounting door sensor--- Using the adhesive tape



Battery Replacement--- Using the screwdriver




 Battery type: CR2450

Image: A step-by-step guide showing how to open the sensor with a screwdriver, access the internal circuit board, and replace the CR2450 battery.

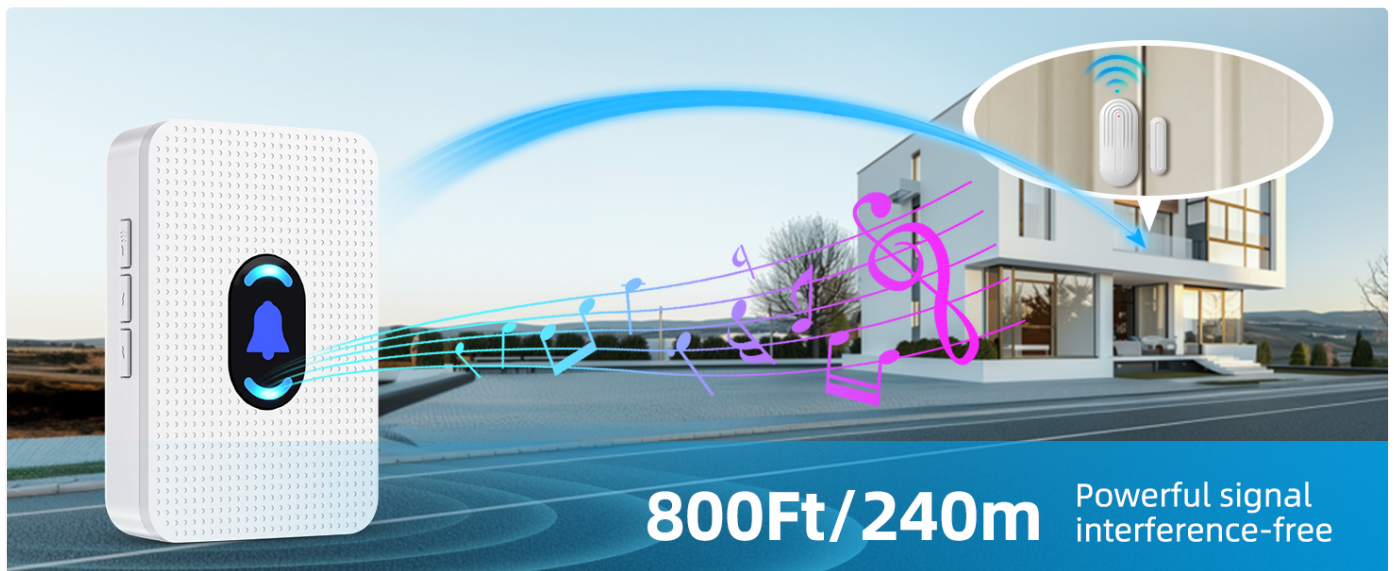


Image: A diagram highlighting the extended battery life of the sensor, indicating up to 100,000 uses or 3-5 years of life, reducing the need for frequent replacements.

Environmental Considerations

The sensors are designed to withstand various weather conditions with an IP44 waterproof rating, ensuring performance in rain, snow, or shine. They operate effectively in temperatures ranging from -4°F (-20°C) to 140°F (60°C).

Strong Signal Transmission



Image: A visual representation of the sensor's IP44 waterproof rating and its operational temperature range, indicating its durability in different weather conditions.

TROUBLESHOOTING

Problem	Possible Cause	Solution
---------	----------------	----------

Problem	Possible Cause	Solution
Receiver does not chime when sensor is triggered.	<ul style="list-style-type: none">◦ Receiver not powered on.◦ Sensor battery low or dead.◦ Sensor and receiver not paired.◦ Sensor parts too far apart.◦ Sensor ON/OFF switch is OFF.	<ul style="list-style-type: none">◦ Ensure receiver is plugged into a live outlet.◦ Replace sensor battery (CR2450).◦ Re-pair sensor and receiver following "Pairing Sensors" steps.◦ Ensure sensor parts are less than 0.6 inches (1.5 cm) apart when closed.◦ Set sensor ON/OFF switch to ON.
Chime sound is too low or too loud.	Volume setting is incorrect.	Adjust volume using the volume buttons on the receiver.
False alarms or inconsistent triggering.	<ul style="list-style-type: none">◦ Sensor parts not securely mounted.◦ Interference from other wireless devices.	<ul style="list-style-type: none">◦ Re-secure sensor parts, ensuring they do not shift.◦ Try relocating the receiver or sensor away from other electronics.

SPECIFICATIONS

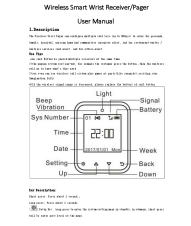




- **Model Number:** DS17
- **Operating Range:** Up to 800 feet (240 meters) in open area
- **Chime Tones:** 20 selectable melodies
- **Volume Levels:** 5 adjustable levels (0-110 dB)
- **Sensor Battery Type:** 1 x CR2450 3V (included)
- **Receiver Power:** AC 240V (plug-in)
- **Material:** ABS
- **Waterproof Rating (Sensor):** IP44
- **Operating Temperature:** -4°F to 140°F (-20°C to 60°C)
- **Item Weight:** 8.4 ounces
- **Package Dimensions:** 4.37 x 3.7 x 3.58 inches

WARRANTY AND SUPPORT

Daytech products are designed for reliability and performance. For any questions, technical assistance, or support inquiries, please refer to the official user manual PDF available online or contact Daytech customer service. The official user manual can be found at: [Daytech User Manual \(PDF\)](#).



Related Documents - DS17

	<p>Daytech Wireless Chime/Pager User Manual - INST-EN-CC01-T-20230214</p> <p>Comprehensive user manual for the Daytech Wireless Chime/Pager (INST-EN-CC01-T-20230214), covering features, specifications, installation, operation, troubleshooting, and maintenance.</p>
	<p>Wireless Smart Wrist Pager User Manual and Guide</p> <p>This user manual provides detailed instructions and specifications for the Wireless Smart Wrist Receiver/Pager, covering setup, operation, troubleshooting, and technical details for the SW06 model.</p>
	<p>Daytech LC01 Wireless Pager/Chime System User Manual</p> <p>Comprehensive user manual for the Daytech LC01 Wireless Pager and Chime system, covering features, product diagrams, installation guides, operation instructions, troubleshooting, specifications, and ringtone list.</p>
	<p>Multifunctional Pager Operation Instruction and User Guide</p> <p>Comprehensive user manual for the Multifunctional Pager, detailing its appearance, power-on procedures, pairing with the SOS button, mobile app connectivity (Tuya Smart/Smart Life), app operations including alarm settings and device management, installation guidance, specifications, troubleshooting Q&A, and after-sales service information.</p>
	<p>WT07-US Two Way Radio Operating Instructions</p> <p>Operating instructions for the WT07-US two way radio, covering basic operation, key functions, voice annunciation, low battery warnings, and advanced features like VOX and Scrambler/Compandor.</p>
	<p>Wireless Outdoor Siren User Manual - Daytech Electronics</p> <p>User manual for the Daytech Wireless Outdoor Siren with 120dB sound and flash. Includes setup instructions, pairing guide, and technical specifications.</p>