

## LIGE ST9-B-HSJ

# LIGE Military Smart Watch User Manual

Model: ST9-B-HSJ | Brand: LIGE

### INTRODUCTION

Thank you for choosing the LIGE Military Smart Watch. This device is designed to be a robust and versatile companion for your daily life and outdoor activities, offering advanced features like Bluetooth calling, comprehensive health monitoring, and a wide array of sports modes. This manual will guide you through the setup, operation, and maintenance of your new smartwatch.

### WHAT'S IN THE BOX

- LIGE Military Smart Watch (Model: ST9-B-HSJ)
- Charging Cable
- User Manual
- Additional Watch Strap (if included with specific model variant)

### SETUP GUIDE

#### 1. Charging the Watch

Before first use, fully charge your smartwatch. Connect the magnetic charging cable to the charging points on the back of the watch and plug the USB end into a power adapter (not included) or a computer USB port. A full charge typically takes approximately 2 hours.



Image: The LIGE Military Smart Watch, showcasing its rugged design and the magnetic charging cable connection.

## 2. App Installation and Pairing

To unlock the full potential of your smartwatch, download the companion application on your smartphone. Search for the official LIGE app in your device's app store (iOS or Android). Once installed:

1. Enable Bluetooth on your smartphone.
2. Open the LIGE app and follow the on-screen instructions to create an account or log in.
3. Select "Add Device" or similar option within the app.
4. The app will search for your smartwatch. Select "ST9-B-HSJ" from the list of available devices.
5. Confirm the pairing request on both your phone and the watch.

# Messages Notifications & Bluetooth call

Receive, Dial Calls from the Bluetooth Smart Watch



Image: A LIGE Smart Watch on a wrist, displaying an incoming call, next to a smartphone showing the same call, illustrating the Bluetooth calling feature.

### 3. Customizing Watch Faces

Your LIGE Smart Watch offers a variety of pre-installed watch faces, and over 100 more are available through the companion app. You can also create personalized watch faces using your own photos.

- **On the Watch:** Swipe left or right on the home screen to browse and select different watch faces.
- **Via App:** Navigate to the "Dial Market" or "Watch Face" section in the app to explore and download new designs, or upload your own images for a custom look.

# Customise Dial & Multifunctions

Get that unique feeling every time you check the time by personalising your watch dial.



Message reminder



Heart rate



Blood oxygen



Steps



Music controller



Sleep monitoring



Stopwatch



Luminance Regulation



Calorie



Alarm clock



Weather forecast



Blood pressure

Image: A display of multiple customizable watch faces for the LIGE Smart Watch, including digital, analog, and data-rich options, demonstrating personalization.

# Multi-functional Smartwatch

Make your life more convenient



Weather



Find phone



Music control



Calories



Alarm clock



Step count



Image: A smartphone screen displaying the option to customize the watch face with a personal photo, showing a corgi, alongside the watch itself with the customized face.

## OPERATING THE WATCH

---

### Basic Navigation

The LIGE Smart Watch features a 1.83-inch HD touch screen and physical buttons for intuitive control.

- **Touch Screen:** Swipe up, down, left, or right to navigate through menus and notifications. Tap to select items.
- **Side Buttons:** The "POWER" button typically serves as a home/back button and can be used to wake/sleep the screen. The "SPORT" button provides quick access to sports modes.

# Rugged Fitness Smart watch



1.83 Inches



240\*286 HD Resolution



TFT Full Touch Screen



IP68 Waterproof



Image: A close-up view of the LIGE Smart Watch, highlighting its 1.83-inch HD screen and the "POWER" and "SPORT" buttons on the side.

## Bluetooth Calling and Notifications

With its built-in speaker and Bluetooth connectivity, the watch allows you to manage calls and receive notifications directly on your wrist.

- **Making/Receiving Calls:** Once paired, you can dial numbers, answer, or reject calls directly from the watch.
- **Message Notifications:** The watch vibrates and displays notifications for incoming calls, SMS texts, and various app alerts (e.g., Facebook, Twitter, WhatsApp, LinkedIn, Messenger, Instagram).

# Message & Phone Call Reminder

Notifications for incoming calls, text message, calendar reminders and more

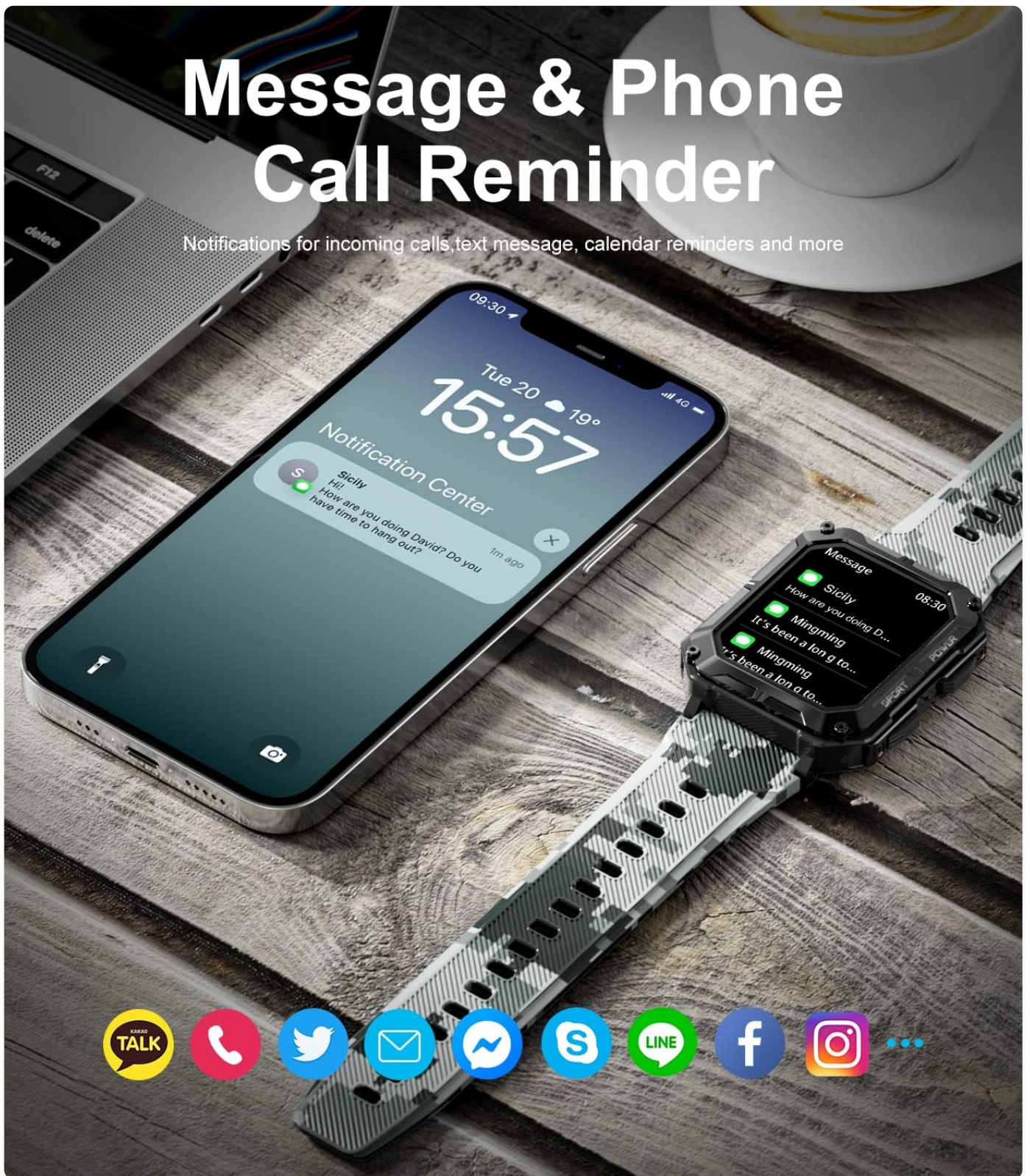


Image: A LIGE Smart Watch on a wooden surface next to a smartphone, both displaying message notifications from various social media and messaging applications.

# 100+ Watchface for your choice

Make watchface with your own photoes Get the look to fit on your style



Image: A man wearing the LIGE Smart Watch, smiling while talking on the phone, with an overlay showing an incoming call notification on the watch face.

## Health Monitoring

The watch provides comprehensive health tracking features to help you monitor your well-being.

- **Heart Rate:** Continuously monitors your heart rate throughout the day.
- **Blood Oxygen (SpO2):** Measures your blood oxygen saturation levels.
- **Sleep Monitor:** Tracks your sleep patterns, including deep sleep, light sleep, and awake time.
- **Stress Monitoring:** Provides insights into your stress levels.
- **Blood Pressure:** Offers blood pressure readings.

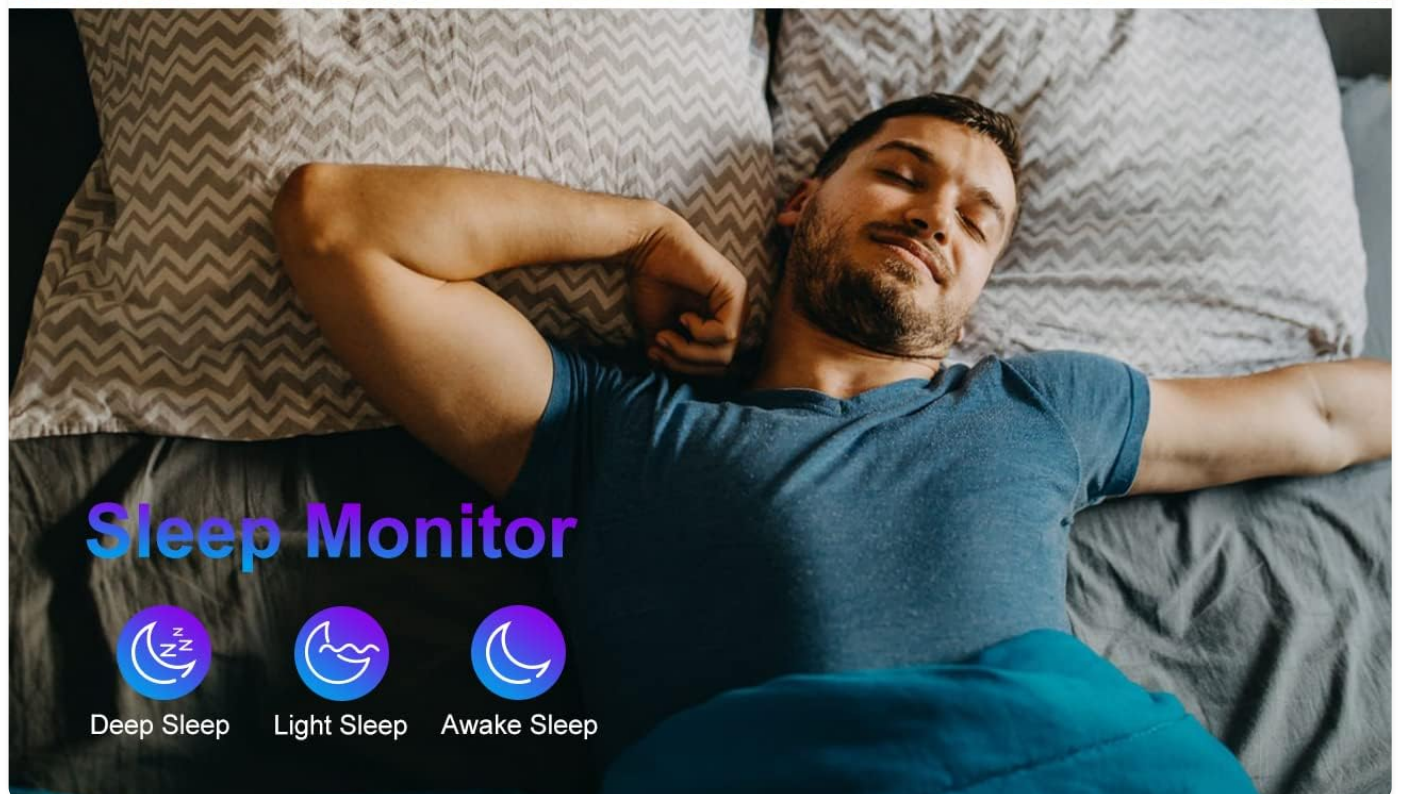


Image: Two scenes: a man cycling outdoors, representing health monitoring, and a man sleeping in bed, representing the sleep monitoring feature of the watch.

# Health Sport Watch

This smart watches for men comprehensively displays 24 hours heart rate, blood pressure, sleep and other data for health.

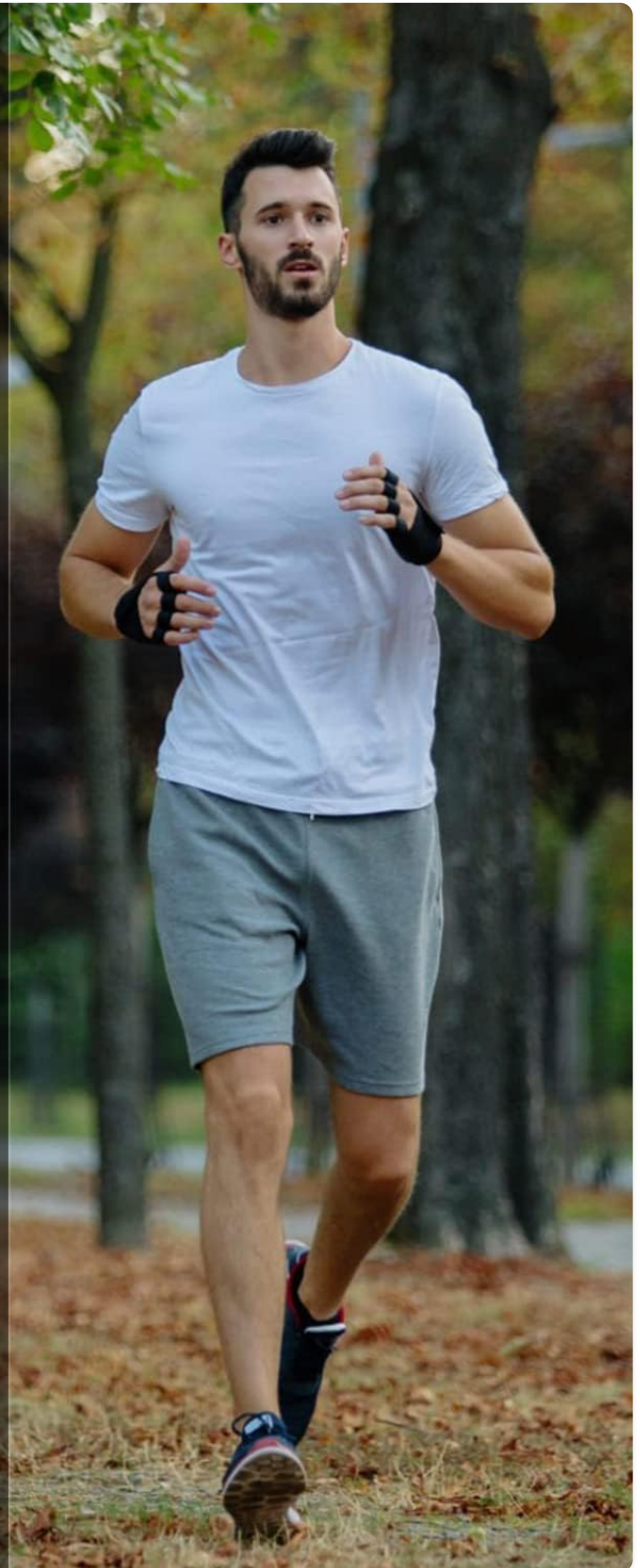


Image: A man running outdoors, with an overlay of the LIGE Smart Watch displaying various health metrics such as SpO2, blood pressure (BP), heart rate, and stress levels.

## Sports Modes and Activity Tracking

The watch supports 123 sports modes, tracking your exercise data efficiently.

- **Activity Tracking:** Records steps, distance, and calories burned.
- **Sports Modes:** Select from a wide range of activities like running, walking, cycling, swimming, basketball, football, and more to get specific workout data.

# 120+ Sports Modes

Make heart rate, Pedometer, calorie consumptions, exercise duration and other data through the fitness watch.



Walking



Running



Cycling



Skipping Rope



Badminton

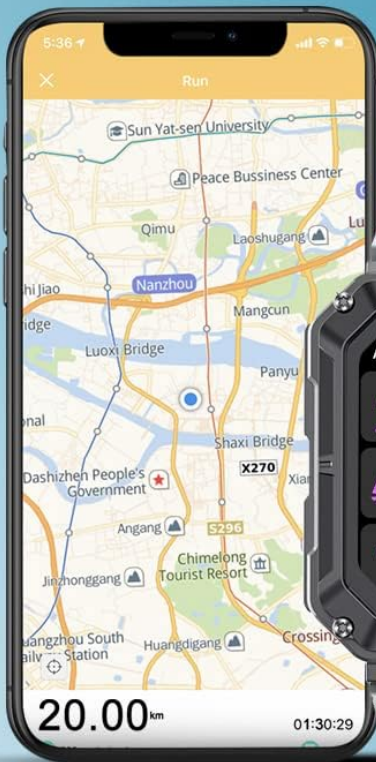


Basketball



Football

...



Distance



Steps



Calories

Image: A snowboarder in action, with an overlay showing the LIGE Smart Watch displaying various sports modes and activity tracking data like distance, steps, and calories.



Image: A man cycling on a mountain bike, accompanied by icons representing multi-functional smartwatch features such as weather, find phone, music control, calories, alarm clock, and step count.

## Other Functions

- **Music Control:** Control music playback on your smartphone directly from the watch.
- **Remote Photography:** Use the watch as a remote shutter for your phone's camera.
- **Weather Forecast:** Get real-time weather updates.
- **Alarm Clocks, Stopwatch, Timer:** Essential utility functions.
- **Sedentary & Drinking Water Reminders:** Prompts to encourage healthy habits.
- **Find Phone:** Helps locate your paired smartphone.

## MAINTENANCE

### Water Resistance (IP68)

The LIGE Smart Watch is IP68 waterproof, meaning it is resistant to dust and can withstand immersion in water up to 1.5 meters for 30 minutes. It is suitable for daily use, hand washing, and light rain. However, it is not recommended for hot showers, saunas, or deep diving, as steam and high water pressure can compromise the seal.

Your browser does not support the video tag.

Video: Demonstration of the LIGE Military Smart Watch's durability, including water resistance, scratch prevention, and anti-smashing capabilities. This video highlights the watch's robust design for various environments.

### Scratch Prevention and Durability

Constructed with special composite materials and a metal shell, the watch is designed to withstand various environmental challenges, including temperature fluctuations, low pressure, dust, and fluid contamination. While highly durable, avoid direct impact with sharp objects to maintain screen integrity.

### Cleaning

To clean your watch, wipe it with a soft, damp cloth. Avoid using harsh chemicals or abrasive materials that could damage the finish or sensors.

### Battery Life

The LIGE Smart Watch is equipped with a 380mAh battery, offering extended usage times:

- Up to 5 days of typical daily use.
- Up to 10 days with high-intensity use.
- Up to 40 days in standby mode.



Image: The LIGE Smart Watch with visual indicators for its large capacity battery, showing 2 hours for full charge, 10 days for high intensity use, 15 days for daily use, and 40 days for standby.

### TRROUBLESHOOTING

Problem	Possible Solution
Watch not turning on	Ensure the watch is fully charged. Connect to the charger and wait a few minutes before attempting to power on.
Cannot pair with phone	<ul style="list-style-type: none"><li>◦ Ensure Bluetooth is enabled on your phone and the watch.</li><li>◦ Make sure the watch is within range of your phone.</li><li>◦ Restart both the watch and your phone.</li><li>◦ Clear Bluetooth cache on your phone (if applicable).</li><li>◦ Ensure the correct app is installed and updated.</li></ul>

Problem	Possible Solution
Notifications not appearing	<ul style="list-style-type: none"><li>◦ Check app notification permissions on your phone.</li><li>◦ Ensure the watch is connected via Bluetooth.</li><li>◦ Verify notification settings within the LIGE app.</li><li>◦ Disable "Do Not Disturb" mode on both devices.</li></ul>
Inaccurate health data	<ul style="list-style-type: none"><li>◦ Ensure the watch is worn snugly on your wrist, not too loose or too tight.</li><li>◦ Clean the sensors on the back of the watch.</li><li>◦ Avoid excessive movement during measurements.</li><li>◦ Note that these measurements are for reference and not medical grade.</li></ul>
Short battery life	<ul style="list-style-type: none"><li>◦ Reduce screen brightness.</li><li>◦ Limit continuous heart rate monitoring or turn off features not in use.</li><li>◦ Disable "Always-On Display" if enabled.</li><li>◦ Ensure no background apps are excessively draining power.</li></ul>





SPECIFICATIONS

Feature	Detail
Model	ST9-B-HSJ
Screen Size	1.83 Inches
Resolution	240 x 286 HD
Memory Storage Capacity	256 MB
Operating System	Android, iOS compatible
Battery Capacity	380 mAh Lithium Polymer
Water Resistance	IP68
Connectivity	Bluetooth
Human Interface Input	Touchscreen
Product Dimensions	17.78 x 5.08 x 7.62 cm; 160 g

WARRANTY AND SUPPORT

LIGE products are manufactured to the highest quality standards. For warranty information or technical support, please refer to the contact details provided with your purchase or visit the official LIGE website. Keep your purchase receipt as proof of purchase.

## Related Documents - ST9-B-HSJ

	<p><a href="#"><u>LIGE GPS Smartwatch: GloryFitPro App Installation and User Guide</u></a></p> <p>A comprehensive guide for LIGE GPS Smartwatches, detailing the download, installation, and usage of the GloryFitPro app. Learn how to register, log in, bind your device, and configure watch settings, along with important GPS notes and FCC compliance information.</p>
	<p><a href="#"><u>LIGE BT Call Smartwatch User Manual - Setup and Operation</u></a></p> <p>Comprehensive user manual for the LIGE BT Call Smartwatch, covering app download, Bluetooth pairing, device operation, and features. Learn how to set up and use your LIGE smartwatch.</p>
	<p><a href="#"><u>LIGE Kids Calling Smartwatch User Manual: Features, Setup, and Operation</u></a></p> <p>Comprehensive user guide for the LIGE 2024 Kids Calling Smartwatch. Learn how to set up, connect, and use features like calling, games, and activity tracking on your child's smartwatch. Compatible with iOS and Android.</p>
	<p><a href="#"><u>LIGE 696 Smartwatch User Manual: Features, Health Monitoring, and Bluetooth Calls</u></a></p> <p>Comprehensive user manual for the LIGE 696 Sport Smart Watch for Men. Learn about its 1.96-inch screen, blood oxygen monitoring, Bluetooth calls, 100+ sport modes, and IP68 waterproofing.</p>
	<p><a href="#"><u>LIGE Men's Smart Watch 189 (I9) - User Manual &amp; Features</u></a></p> <p>Comprehensive user guide for the LIGE Men's Luxury Smart Watch 189 (I9). Covers features like full circle touch screen, Bluetooth calls, waterproof design, fitness tracking, and compatibility with Android/iOS.</p>
	<p><a href="#"><u>ST1 Smartwatch: Features, Setup, and User Guide</u></a></p> <p>Comprehensive guide to the ST1 smartwatch, covering setup, pairing, features like heart rate monitoring, step tracking, training, sleep, notifications, and Bluetooth call functionality. Includes troubleshooting and app download instructions.</p>